



# DEDHAM Parish Magazine



December 2024  
January 2025



# Dedham Parish Magazine

First Published in 1876

December 2024/January 2025

## DEDHAM PARISH CHURCH

Rural Missioners     Phillip Young  
 Tel: 323 919  
 John Saxon  
 Tel: 01255 781859

Assistant Minister     Merv McKinney  
 Tel: 322 136

## PARISHES OFFICE

Parishes Administrator     Deb Turner  
 Tel: 322 136

Monday 9.00am-1pm.

Email: [stmaryda@gmail.com](mailto:stmaryda@gmail.com)

Children and Young People's Worker  
 Claire Arculus  
 Tel: 322 136

Email: [stmarydacypw@gmail.com](mailto:stmarydacypw@gmail.com)

Assembly Rooms, High Street, Dedham.  
CO7 6HJ.

## CHURCH WARDENS

Peter Wilson     Tel: 323 179  
 Email: [peter.wilson2@btinternet.com](mailto:peter.wilson2@btinternet.com)  
 Sharon Sarson     Tel: 07876 114418  
 Email: [sharonsarson@hotmail.co.uk](mailto:sharonsarson@hotmail.co.uk)

## MUSIC

Director of Music     Antony Watson  
 Tel: 322 425

**ASSEMBLY ROOMS** Tel: 323 921

## CHURCH FLOWERS

Coordinator     Helen Sims  
 Tel: 321 286

Wedding Flowers     Wendy Sarton  
 Tel: 323 027

## DEDHAM PARISH MAGAZINE

Editor:     John Goldsbrough  
 Email: [dedhameditor@gmail.com](mailto:dedhameditor@gmail.com)  
 Advertising     Sara Marshall  
 Email: [dedham.advertising@gmail.com](mailto:dedham.advertising@gmail.com)

**The deadline for the February 2025 magazine entries is the 10<sup>th</sup> January 2025.**

## MAGAZINE CONTENT

2.     Contacts/contents.
  - 3-4.     Services & Church events.
  5.     Rural Missioner.
  6.     Church News & Events.
  7.     CYP Worker.
  - 8-9.     Stained Glass Windows Appeal.
  - 10-11.     The Nativity in Stained Glass.
  - 12-13.     Features.
  - 14-15.     Dedham Parish Council.
  - 16-17.     Stress-free Christmas.
  - 18-19..     Gardening Notes.
  - 20-21.     Dedham Primary School.
  - 22-24.     News and Events.
  25.     Events Calendar.
  26.     Kingsleigh.
  - 27-48.     Advertising.
- Cover Photo - Recycled Christmas tree  
2023. John Goldsbrough

### Can we help?

Sometimes things in life can just get too much to cope with on your own... **Psalm 34:18: *The Lord is close to the broken-hearted and saves those who are crushed in spirit.*** If you would like some support or know of any one who would, please contact: Ruth Higginson **Tel: 322 598.**

***If you would like a lift to church contact Sharon Sarson Tel: 07876 114418***

If you have been bereaved or know of anyone who has, please contact Vee Druitt **Tel: 322 000** or Ruth Higginson **Tel: 322 598**

***If you need any further support, please contact the Parishes Office Tel: 322 136 and your call will be returned.***

*Throughout the magazine local telephone numbers omit the 01206 area code unless otherwise stated.*

**Sunday, 1<sup>st</sup> December**

8.00am Holy Communion (BCP) Ardleigh  
 9.30am Café Church Ardleigh  
 9.30am Rise N Shine Dedham\*  
 5.00pm Evensong Dedham\*

**Sunday, 8<sup>th</sup> December**

09.30am Morning Praise Ardleigh  
 11.00am Holy Communion Dedham\*

**Sunday, 15<sup>th</sup> December**

9.30am Holy Communion Ardleigh  
 9.30am Matins Dedham\*  
 4.00pm Carol Service Ardleigh  
 6.00pm Carol Service Dedham\*

**Sunday, 22<sup>nd</sup> December**

9.30am Morning Praise Ardleigh  
 9.30am Holy Communion Dedham\*

**Christmas Eve**

4.00pm Crib Service Dedham\*  
 11.00pm Midnight Communion Dedham\*

**Christmas Day**

8.00am Holy Communion (BCP) Ardleigh  
 10.00am All-Age Communion Dedham\*

**Sunday 29<sup>th</sup> December**

11.00 am Come Together Great Bromley

\* = Services which are live streamed.

**Morning Prayer - Every Tuesday**

10.30am at Dedham Church.



Member Editor 2024  
 Association for Church Editors

**Sunday, 5<sup>th</sup> January**

8.00am Holy Communion (BCP) Ardleigh  
 9.30am Café Church Ardleigh  
 9.30am Rise N Shine Dedham\*  
 5.00pm Evensong Dedham\*

**Sunday, 12<sup>th</sup> January**

09.30am Morning Praise Ardleigh  
 11.00am Holy Communion Dedham\*

**Sunday, 19<sup>th</sup> January**

9.30am Holy Communion Ardleigh  
 9.30am Morning Praise Dedham\*  
 5.00pm ReVive@5 Dedham\*

**Sunday 26<sup>th</sup> January**

9.30am Morning Praise Ardleigh  
 9.30am Holy Communion Dedham\*

**FROM THE REGISTERS.**

**Funeral:**

**October 27<sup>th</sup> : Mary Gooch,**  
 Interment of Ashes



**Our services are on YouTube.**  
**Search Dedham and Ardleigh**  
**Parishes.**



**Follow us on Facebook,**  
**search - Dedham and**  
**Ardleigh Parishes.**

**Dedham and Ardleigh**  
**parishes website -**  
**QR code**



*Opinions expressed in contributed articles are those of the contributor and do not necessarily represent the position or opinions of the PCC or the Editorial team.*

**Ardleigh Friendship Group: every 2nd and 4th Tuesday of the month:** 10am to 12 noon - Ardleigh Church.

**Ardleigh Craft Group: every 1st and 3rd Tuesday of the month:** Meeting at Ardleigh Church from 10am to 12 noon. During the winter months, this group is held in members' homes. Please contact Ardleigh Churchwarden for more information.

**Little Steps Pre-School Group: every 2nd and 4th Friday of the month:** 9.30am-11.30am in Ardleigh Church. Christmas party will be on 6th December.

### December

**Monday Lunch Club – Monday 2nd December 12.30pm,** Essex Tea Rooms. Phone 322192 to reserve a place indicating it is for the Lunch Club.

**Men's Breakfast - Saturday 7th December 9am** - venue tba. For bacon butties, tea, coffee and chat.

**Walk and Talk - Thursday 12th December** - Dedham Arts and Craft Centre for a walk. 10am for a walk, or at 11am, same venue, for just a chat.

### January

**Monday Lunch Club – Monday 6th January 12.30pm,** Essex Tea Rooms. Phone 322192 to reserve a place indicating it is for the Lunch Club.

**Men's Breakfast - Saturday 4th January 9am** - venue tba. For bacon butties, tea, coffee and chat.

**Walk and Talk - Thursday 9th January** - Dedham Arts and Craft Centre for a walk. 10am for a walk, or at 11am, same venue, for just a chat.

## BIBLE QUOTE COMMENTARY

### *Jesus said: I am the light of the world*

Have you heard about what is being dubbed the 'Christmas creep'? The thinking behind this is that the build up to Christmas is starting earlier and earlier. Have you noticed? Shops stocking Christmas items in August. Charity Christmas appeals in October and supermarket Christmas television adverts early in November.

When did you see your first Christmas lights? Christmas may creep earlier and earlier but it is a reminder and points to the heart of what we celebrate, the birth of Jesus as Saviour of the world.

I must say seeing trees and houses decorated with coloured or flashing lights is a delight and joy, brightening up dark winter nights and for me a wonderful visual aid of what Jesus claimed when he said: ***'I am the light of the world. Whoever follows me will never walk in darkness, but will have the light of life.'*** (John 8. 12)

Light dispels darkness and brings hope and this is such an encouragement to me. The lights at Christmas herald His coming and I know after Christmas they will be switched off and put away but the light of Christ still shines and that fills me with hope.

*Meru McKinney*

What can I give him ?  
Poor as I am,  
If I were a shepherd,  
I would bring a lamb.  
If I were a wise man  
I would do my part.  
What can I give him -  
Give my heart.

*Christina Rossetti*

Dear Friends

Before you get completely overwhelmed by Christmas, with all its necessary preparations prior to enjoying any celebrations, take time to pause, reflect and anticipate what is to come. In the church, the four weeks leading up to Christmas is a time to do just this and is called Advent.

It is a time of anticipation and waiting. For the young (and perhaps not so young!) chocolate filled advent calendars help us mark off each day through December.

In church it is traditional to light a wreath of four candles, one for each Sunday in the four weeks of Advent with a fifth and central candle to light on Christmas Day itself.



In anticipating the Christmas festivities, it may be that you hope for a particular gift. Children are always anticipating what will be in their sacks and stockings on Christmas morning.

Others may be looking forward to meeting up with family and friends at a party gathering or around a meal table. Yet, because of all the celebration, others may be fearing rather than anticipating, wondering what it is all going to cost, or perhaps dreading feeling even more lonely in spite of the busyness of the season for so many.

From a world point of view, there seems to be little positive news to anticipate a better New Year.

Two major conflicts still rage as with many other forgotten trouble spots around the world. There have been dreadful climate warming driven extreme weather events just recently too. So, what is there to look forward to apart from some winter celebrations to offer a brief respite.

An Advent Scripture is from Psalm 24, verse 7:

***Lift up your heads; O gates, be lifted up O doors; and the King of Glory shall come in.***

Whereas many Psalms lament the woeful state of society with all its injustices and enmity, this Psalm proclaims a grand entrance as in a royal procession, the like we saw at the King's Coronation. It was a procession to take the Ark of the Covenant (a symbol of God's presence) into Jerusalem.

Advent is an opportunity to anticipate and prepare for another grand entrance – the birth of a Saviour, the infant King Jesus born as Immanuel, God with us!

This is worth celebrating as it leads us first to Easter and our salvation. And then it leads us on into the future and the Christian hope of all things being made new in the return of Jesus and a new heaven and a new earth. (Revelation 21)

Whatever your plans for Christmas, we welcome you to come and celebrate with us at one of our Christmas services. Why not come to one of our Advent services before Christmas to take time to pause, reflect and prepare for the coming of our Saviour.

Happy Advent, Merry Christmas and a Peaceful New Year!

*Best Wishes*  
*Rev'd John Saxon*



## Christmas Services

### at Dedham and Ardleigh Churches

#### Sunday, 15<sup>th</sup> December

4.00pm	Carol Service	Ardleigh Church
6.00pm	Carol Service	Dedham Church

#### Christmas Eve

4.00pm	Crib Service	Dedham Church
11.00pm	Midnight Communion	Dedham Church

#### Christmas Day

8.00am	Holy Communion (BCP)	Ardleigh Church
10.00am	All-Age Communion	Dedham Church



Supporting Church music in the Tendring area



#### December 8<sup>th</sup>

The Deanery choir will be singing at St George's Church, Great Bromley CO7 7TS at the 11.00am communion service.

#### December 14<sup>th</sup>

The Deanery choir will be singing at St Georges Church, Great Bromley CO7 7TS at 7.00pm, the concert 'Living Christmas '24'.

*Graham Bell*

## CHILDREN AND YOUNG PEOPLE'S WORKER

### It's a Waiting Game.....

As we embark on this season of Advent, which marks the beginning of the church year, we remember this time as a time of waiting in anticipation for the arrival of Jesus, the long-awaited Messiah. It is a time for reflection in darkness, for renewal of hope and for a movement towards a beginning.

To represent Advent in Church, a green wreath is displayed at the front of the church during December symbolising the eternity of God's church. There are 3 purple candles, 1 pink and 1 white candle on the wreath with the white candle in the middle.

Each candle is lit on each Sunday of Advent representing a different theme and the candles (3 purple and 1 pink) represent hope, peace, joy and love. The third candle is the pink candle representing joy.

The white candle in the middle is lit either during Midnight mass on Christmas Eve or on Christmas Day and this is Christ's candle. Why not spend some time in reflection this December and letting your young people know what Advent is all about....

During December, Dedham Church has a number of services and activities for anybody and everybody to come to, but have marked out those that may suit children and families:-

**Sunday, 1<sup>st</sup> December 9.30am** - Rise and Shine Service 'Advent'

**Sunday, 8<sup>th</sup> December 11am** - Junior Church

**Sunday, 15<sup>th</sup> December 9.30am** - Junior Church

**Sunday, 15<sup>th</sup> December 3pm** - Youth TENPIN bowling

**Sunday, 15<sup>th</sup> December 6-7pm** - Dedham Christmas Carol Service

**Sunday, 22<sup>nd</sup> December 9.30am** - Junior Church

**Tuesday, Christmas Eve 4-5pm** -

Crib Service

**Wednesday, Christmas Day 10am** - All Age Christmas Service (Communion)

**Sunday, 5<sup>th</sup> January 9.30am** - Rise and Shine

Hope to see you at some of these events. I will leave you with some links to activities you may wish to do with your young people over Christmas.

Wishing you and your families a restful, joyous and blessed Christmas.

### Faith in Kids Advent Resources

<https://www.faithinkids.org/wp-content/uploads/2024/07/1.Overview-The-Christmas-Story-Brick-by-Brick.pdf>



### Jesse Tree Resources to do at home

[https://drive.google.com/file/d/16K4YO9jiFMz6JGVITbmapqC2Ez\\_tNOqO/view](https://drive.google.com/file/d/16K4YO9jiFMz6JGVITbmapqC2Ez_tNOqO/view)



### What is Advent? short video

<https://www.youtube.com/watch?v=RfN7ucvUx4s>



*Claire Arculus*

Children and Young People's Worker  
Dedham Parish  
stmarydacypw@gmail.com



## DEDHAM PARISH CHURCH

*Presenting  
Christ in  
Constable  
Country*

Will you help us to continue to maintain and preserve a very important part of the heritage of Dedham?

Dedham Church, built in the 15<sup>th</sup> century, stands in the centre of the village and attracts many thousands of visitors every year, and serves to remind us of the skills of past craftsmen and all those who have come here over the years to worship God. History is etched in the fabric of this special place and the faith of Christians past and present have sustained it.

We are very fortunate to have many fine examples of stained-glass windows in the Church of St. Mary the Virgin, Dedham. There are some remains of late 15<sup>th</sup> or early 16<sup>th</sup> century glass depicting Angels and Apostles in the tracery at the West end of the church, but most of the finest windows date from the mid-nineteenth century onwards.

The seven large windows in the chancel and behind the altar are fine examples of medieval revival from the early Edwardian period. They come from the prestigious workshop of Charles Kempe and his successor Walter Tower. They show depictions of various bible stories, saints and prophets in great detail and are beautifully executed.

We are very grateful that they have been refurbished not many years ago and it is important that the other windows which compliment those in the Chancel

are now restored and preserved as well.

Amongst the windows in the body of the church, many other famous makers are also represented here in St. Mary's; Clayton and Bell with their superb rendering of "the Raising of Lazarus" and "Christ in Majesty" with Angels bearing the words of the Beatitudes and also examples by firms such as William Warrington of London ("Scenes from the Passion") William Wailes of Newcastle, ("The Marys at the Empty Tomb") and James Powell and Sons of Whitefriars Glass, ("The Ascension" and "The Good Shepherd"). There is an important Arts and Crafts style window showing Faith, Hope and Charity which was designed by Wilfred von Glehn and signed with his initials, as well as many other fine windows.

It is very important that these exceptional windows are maintained and preserved, not only because they form an essential part of the character, ambience and architectural beauty of Dedham Church, but also for their artistic importance and merit and also their considerable historical significance. They are a record of much local history, with many of the windows commemorating with inscriptions notable local clergy and residents of Dedham. One of the oldest "memorials" is of Edmund Sherman, marked by his initials on an early "quarry" (pane of glass) probably from the early 17<sup>th</sup> century in a window in the North aisle. The lower half of this window and others were designed in the 1960s by Raymond Erith, himself a resident of Dedham and a leading classical architect of his time.

The most recent Quinquennial report identified that a large number of the windows were in a bad state of repair and work needs to be undertaken to repair and restore the glazing, and to address the masonry surrounding some of the windows. With the church



Architect we have consulted with different contractors who are able to undertake such work and have applied for a faculty to begin the work. This is a substantial project which will take approximately 18 months to complete and will cost £165,000. The PCC have given their approval to proceed with the works and we are asking the church congregation, local people and charitable organisations for financial support.

Donations can be made to:  
Dedham Parochial Church Council (sort code 20-22-67/account 00297879) marking your donations WINDOWS

Our thanks to all who will consider this appeal, and we hope and pray that we can continue the work done by previous generations in preserving this beautiful building for those who follow us, whether to worship or simply to visit and enjoy the beauty and majesty of the church building.

*Peter Wilson and Sharon Sarson  
Churchwardens*

### ST MARY'S CHRISTMAS TREE



St. Mary's Dedham are very grateful to the Hunnaball Family Funeral Group, who have once again kindly offered to sponsor our Christmas tree in the church.

Their generosity is much appreciated and the decorated tree will bring joy to visitors and all those who attend the many services held during the Advent period.

### Someone Does Care

I found God in the morning,  
we just sat and talked.  
I called on God at noontime,  
a heart filled with despair.  
I knew he was there.  
I had made him happy,  
I had lived his way.  
I kept him near me,  
everywhere I walked.  
I felt his quiet presence,  
We met again at sunset,  
the waning of the day.  
Then when at bedtime  
I knelt silently in prayer,  
again his gentle presence I felt:  
Someone does care.

Unknown author but Dorothy Perry has known and loved it all her long life, and would like to share it with us all.

## A LIVING CHRISTMAS '24

Music & arrangements by  
contemporary composers

with

### THE DEANERY CHOIR

and Peter Clayton (Accompanist)

**Saturday 14th December**  
7pm start

*Forbes L'estrang - Sametz - DeFord  
Noon - Quartel - Wright - Forrest  
Lauridsen - Simmons - Chilcott*

**St George's Church  
Hall Road  
Great Bromley  
CO7 7TS**

Retiring collection for Church  
restoration fund



The centre three panels of the East window

The stable is represented by wooden slats and woven hazel screens with a thatched canopy. Above Mary there are five Angels. Two of these Angels hold a banner on which is inscribed “Gloria in excelsis Deo, in terra pax” (Glory to God in the highest, peace on earth).

We have not spoken previously of the amazing designs which surround the main panels of the windows of the Church, but they are certainly worth looking at. Here amongst the architectural stonework, depicted above and below the main scene, we can see if we look carefully, no less than 25 Angels of different sizes, dressed in white, some with partly gilded wings and all with golden halos.

In the panel on the right hand side we see Jesus’ father, Joseph, holding a lantern to illuminate the scene. In front of Joseph are two shepherds both kneeling and one with his hands clasped in prayer. One carries a shepherd’s crook and the other a set of bagpipes. There is some controversy as to where bagpipes originated but they were certainly around in Egypt as long as 400 years BC. It is not unreasonable, therefore, to imagine that they were used in Israel at this time.

In the left hand panel there are three more shepherds, the two in the background are removing their hats in respect. The shepherd in front has a shepherd’s crook and a horn hung at his waist. This “instrument”, known as a “shofar” in Hebrew, was the nearest thing to a trumpet at the time. Made of ram’s horn and with an integral mouthpiece, it had no mechanical means of altering the pitch. The trumpet is often referred to in the Bible and it is this type of horn that is being referred to, not the modern day valved instrument.

As we head towards Christmas it is appropriate to look at the largest window in St Mary’s Church, Dedham. The East window, behind the altar, depicts the Nativity. This is one of the windows from C. E. Kempe’s studio and is in the typical renaissance revival style he used.

In the central of five panels we see the Virgin Mary with elaborate gold halo and clad in luxurious satins and embroidered silk. She is holding the Baby Jesus also with gold halo and partly swaddled in a beautiful wrap.

# The Nativity

There are no donkeys or cows and the stable is spotlessly clean as are the shepherds. Our image of this scene is moulded by the school Nativity play, all kinds of animals have been introduced and the Magi also appear on the scene.

However, although the shepherds came on the night Jesus was born the “three wise men” did not visit Jesus until later though exactly when is a matter of some debate. Traditionally 13 days after the birth, now the Feast of Epiphany (6th January), but possibly as long as two years later.



The far left panel of the East window, St. Alban

Higher still in the window angels carry a banner proclaiming “Gloria tibi D’ne (for Domine) qui natus est de virgine”: Glory be to you O Lord who art born of a virgin. A very concise description of the scene depicted in this window.

Higher still in the window angels carry a banner proclaiming “Gloria tibi D’ne (for Domine) qui natus est de virgine”: Glory be to you O Lord who art born of a virgin. A very concise description of the scene depicted in this window.

The two outer panels depict Saints. In the one on the left a banner proclaims “S’tus Albanus proto martyr”: St Alban the first martyr. We have already seen that St Stephen was the first Christian martyr, but this title of St Alban refers to the fact that he was the first British Christian martyr. He has a sword in his right hand signifying that he was beheaded, when a persecution of Christians took place around 3rd century AD.

In the far right panel we see S’tus Augustinus: Saint Augustine of Canterbury (453 – 604 AD). In 597 AD he was sent to England, which was then still a mainly pagan country, by Pope Gregory 1st as the leader of a group of missionaries. King Aethelberht of Kent welcomed them and accommodated them in Canterbury. Augustine converted thousands who were baptised on Christmas day and subsequently the King was also converted. Augustine was made the first Archbishop of Canterbury and is depicted here with a bishop’s mitre as well as a halo. He is signing a blessing with his right hand, and in his left hand he carries a long staff in the form of a cross, from which hangs a pennant embroidered with the crucifixion.



The far right panel of East window, St. Augustine

I wish you all a Joyous Christmas and a Happy and Healthy New Year.

*Adrian Beckingsale*

## BRIDGING WATERS: DEDHAM BRINGS CLEAN WATER TO GUATEMALA

It started with a good cup of coffee. Essex boy Julian Crisp and his wife Kristen of Feeding Faith Missions sat down with Pastor Mynor Morales of San Esteban, a small rural village in Guatemala, to discuss bringing clean, purified water to his area.

Clean drinking water in Guatemala isn't a normal standard. A large percentage of the country is impoverished so many homes don't have running water. Also, the municipal water is not filtered or purified and contains many contaminants, therefore drinking water must be purchased.

As many cannot afford food, much less water, families will drink river water which contributes to a large amount of water borne illnesses, especially in children.

Julian and Kristen didn't originally plan to work with water. They arrived in the country at the start of the pandemic which initially led them to bring food to families in need. As the borders were closed and there were strict curfews, many couldn't work and there were no benefits available. While giving out food they realized that even if you are feeding someone, clean water is the foundation.

You can't make food, prepare a drink, or wash the body with contaminated water. Once things began to open up, they began getting "signs and messages" that they should be working with water for their mission.

They work in the hottest part of Guatemala called the Dry Corridor. It experiences drought four out of every five years. Since the Crisps arrived in 2020, they have experienced one rainy season. The remaining years have been dry which affects every facet of life; crops, livestock, and humans.

Those without running water have no means to wash, cook, or clean. This year Feeding Faith opened their second and third water purification plants in two different rural villages. The most recent was completed with generous donations from St. Mary's Church in Dedham. This plant will provide clean, purified drinking water to a community of 1500 who may otherwise not have access to drinkable water.



Water purification plant in San Esteban -  
Opened October 2024

During installation of the plant the ministry team provides hygiene education classes to the children in local schools. They are taught how germs are transferred and the basics of how to eliminate them. As easy as it sounds, "Wash your hands!" The class goes on to explain how clear water doesn't necessarily mean clean water.

Safe water comes from a sealed bottle at the local store, or water delivered from the plant.

Many thanks to the people of Dedham who graciously helped with this life saving project. To learn more about how to give clean water to a family in need go to [www.feedingfaith.org/water](http://www.feedingfaith.org/water)



### **'I THINK THAT I SHALL NEVER SEE A POEM LOVELY AS A TREE ...'**

My mother Barbara grew up in New England (Boston, Massachusetts) during the Great Depression. As a quiet, only child whose father had died when she was just two years old, she would spend hours reading. These lines are from a short, simple poem; one of the many she was required to learn by heart at school. My mum would recite lines to me some 80 years later, even when much of her functioning memory had been eroded by vascular dementia.

She was in a comfortable room at the care home nearby, her picture window overlooking tall oak trees and open fields beyond. In warmer weather, we'd go into the garden with her wheelchair and enjoy the silent, powerful protection of the mighty oaks. It seemed to relax and reassure her. Sometimes she seemed to respond to their presence and would begin, with a twinkle: 'I think that I shall never see ...' Moments of satisfaction in retrieving words that still spoke to her spirit.

We found an illustrated version of the poem; the verses typeset to follow the curves of the tree trunk and to settle under its branches. We framed it and placed it on her bedside table. When she died in 2018 and we were asked to remove her effects from her room, it came home with us. We would read it and remember her. Sometimes I ached, wishing I could hear her recite it again.

Just six months after my mum Barbara died, in December 2018, my mother-in-law Gill suffered a severe haemorrhagic stroke. The paramedics saved her life and the stroke unit at the hospital provided exceptional care. When it was time for Gill to be discharged, we were thankful that there was a place for her to come and live in

the same care home which had looked after my mum. Yet the adjustments Gill had to make were huge. She'd left her home in Bournemouth with a suitcase to come and spend Christmas with her family, and now she was stranded, dependent, confined and somewhat bewildered. As one carer put it, 'She's come from her own home and familiar surroundings and now she can't even make herself a cup of tea.'

It's now been almost 6 years since we have had the joy of Gill being 'just down the road'. Her warmth, ready smile and generosity of spirit make it a pleasure to be with her. I like to sit with her as I used to with my own mum. Gill looks out on a grove of trees interrupted only by the small car park below. Soon after her arrival, she began to reflect on the way the trees showed off their rich colours; revealed the vivid sunsets. Increasingly, she would remark on – and wonder at – the beauty of the scene.

I knew it was time for the framed tree picture to belong to Gill. It now sits on her bedside table. She has read and re-read it, even learning some of it by heart. Several times this autumn she gazed in wonder at the autumn bronzes and golds and poured out her gratitude: 'Look! Hasn't God been wonderful to us to make such beautiful trees? Aren't they a joy?' Then came the moment that startled me. Speaking slowly and distinctly, she quoted, 'Poems are made by fools like me. But only God can make a tree.'

*Cathy Groslin*

*Note: 'Trees' was written by the American poet Alfred Joyce Kilmer (1886-1918). Kilmer enlisted in the US Army in 1917 and was killed by a sniper's bullet on a battlefield in France. He was 31. The French government honoured his valour with the posthumous award of the Croix de Guerre. He left a widow and 5 children.*



## DEDHAM PARISH COUNCIL NOVEMBER 2024 MEETING NOTES

### Points from the Public Forum

A resident raised continued concerns about Petalo Lodge, particularly regarding dog attacks and dangers of local flooding.

Lamb corner; hedges have still not been cut back, letters have previously been sent by the Parish council and it was suggested that it is a Highways issue

### Death of Andy Bell

Council noted with sadness the death of Andy Bell who had been a leading figure in the Sports Club for many years.

### Youth Club

The Council were informed that the youth club has now started up.

### Wheelie Bins

City Councillor Rowe reported on the plans to introduce wheelie bins for residents in Colchester which will include Dedham. Concern was raised about this particularly for those houses who have no front gardens. Residents were asked to contact him if they have any concerns. The safety of buggies, pedestrians and dogs etc was also raised.

It was felt by several residents that Dedham should be treated as a special place because of its AONB status. The Parish Council agreed to write to the City Council on this matter, seeking exemption.

### Possible development by Munnings Museum for a dog field

Ten people have contacted the council regarding this item with their concerns on this possible development. To date there had been no paperwork received by the clerk regarding this from Munnings Museum.

To date no planning application has been received by Colchester City Council and therefore the council cannot record any comment on this.

The representative from Munnings Museum was unavailable for this meeting however a resident who was acting as a spokesperson for the many residents who have concerns regarding this, read out a summary of the concerns and issues.

There is strong opposition to this within the village and the spokesperson outlined the concerns of the residents and gave details of the concerns that she had received.

### Christmas Fair and Market

Agreement for grant of £2000.

### Church and Churchyard

Agreement for DPC Application for village amenities for £1700.

### Parish Magazine

Agreement for DPC grant of £1500.

### Dedham Angling Club

A report was given on plans for an Angling club.

### Planning Applications

The Council had no comments on applications currently out for consultation.

## Traffic & Parking

Continued concerns were raised about speeding particularly by tractors. The Council noted the various accidents that had taken place recently in the village.

Concern was expressed that unless someone was killed or seriously injured records are not usually kept of accidents. It was suggested we all make better use of the Traffic Web records.

Highways reported we can now have more gateways into the village. Birchwood Road and Ardleigh Road are now being considered.

Speedbot is a web initiative the Council is now investigating to use, which could track speed of traffic on Dedham and Ardleigh roads. It only works on A and B, roads and only gives raw data, but does not show individual or registration details. This data can be given to the police to show the amount of traffic speeding in these areas. The data would be brought to meetings every few months to report to the public.

## River Impact

The report from Suffolk Wildlife Trust had been received and the recommendations are now being considered.

It was agreed to approve a budget for professional advice to take some of the proposals forward.

Date of next meeting: Monday 2nd December 2024 at 6.30 p.m.

*Councillor Douglas Bourn  
on behalf of the Parish Council.*

<https://www.dedhamparishcouncil.co.uk/>



## GREENER DEDHAM

Help Us Go Greener, Dedham! Share Your Sustainability Tips.

We'd love to hear from you about the simple, eco-friendly things you're doing to help the planet—whether they're creative, quirky, or just practical. Your tips could inspire others in our community to make a difference.

Here are a few prompts to get you started:

1. Have you got a secret to great compost?
2. Have you got an ingenious way to use glass jars?
3. Got any clever ways to catch rainwater?
4. How do you save energy in a creative way?
5. Do you have any tips to reduce food waste?

We'd really love to hear your tips! Add them to our community board by scanning the QR code, or going to

<https://padlet.com/batesemmarose/greenerdedham>



[www.dedhamparishcouncil.co.uk/sustainablededham/](http://www.dedhamparishcouncil.co.uk/sustainablededham/)



## HELPING TO CREATE A STRESS-FREE CHRISTMAS.

Christmas can be a stressful time for those in charge of the celebratory meal, so here are my tips along with two recipes which can be made in advance of the celebration.

### TIPS

Don't be afraid to ask for help.

Organise the fridge.

Plan Christmas dinner in advance.

Prep your oven.

Stick to tried and tested recipes.

Take a few short cuts.

Don't stress about every Christmas dinner tradition

Avoid pre-Christmas cocktails!

### RECIPES

#### Maple syrup Christmas ham (10 persons)

Why is this an easy Christmas recipe? Preparing a ham may sound complicated, but it's much easier than you think! Others will think it's complicated too, which means you'll score some serious points when you serve this up. It does take a little time, but can be made 2 days in advance, so the work can be spread out and you'll have more time on the day.

#### Ingredients:

- 5 kg of ham, on the bone
- 1 cinnamon stick
- 1 tsp of peppercorns
- 1 tsp of coriander seeds
- 2 bay leaves
- 25 cloves
- For the glaze:
  - 200 ml Maple syrup
  - 2 tbsp wholegrain mustard
  - 2 tbsp Worcestershire sauce
  - 2 tbsp soy sauce



#### What to do:

1. Place the ham in a large pan and add cold water so that the ham is almost completely submerged. Add the herbs and bay leaf. Bring the water to the boil. When the water boils, turn down the heat. Leave to simmer for about 1 hour and 50 minutes. When the water evaporates, add boiling water again. If foam appears on the water, scoop it off.
2. Carefully pour off the cooking liquid. You can save it and use it as a base for soup if you like. You set the oven to 190 degrees (170 for a hot-air oven or setting 5 for a gas oven). Let the ham cool for a while while the oven heats up. Place the ham in a large roasting pan. Cut away the rind so that an even layer of fat remains everywhere. Make notches in the fat, you do this by cutting in a criss-cross pattern.



Spread the cloves over the ham and insert them into the meat. You can finish the ham now, as described in the next step, or you can store it in the fridge for up to two days.

3. Mix the ingredients for the sauce in a bowl. Pour half over the ham and bake in the oven for 15 minutes. Now remove the ham from the oven again and pour the rest of the sauce over the ham. The ham goes into the oven again for 35 minutes. In between, take the meat out three or four more times to pour the cooking juices and sauce over the ham again so that it absorbs well into the meat. Also, turn the meat in between so that it cooks evenly. When the ham is ready, leave it to stand for at least 15 minutes before slicing. You can eat the ham immediately, but what can also come in handy during the busy holiday season, it can also stand in the fridge for two days and then be served cold. That is just as tasty!

### Easy Tiramisu

This can be prepared the day before. Add the cocoa powder and chocolate shavings on Christmas Day a couple of hours before the meal.

#### Ingredients:

- 4 cups of espresso, or a cafetiere for four cups of strong coffee
- 2 tsp caster sugar
- 50 ml amaretto, or any other liqueur you like
- 1 Panettone, this is an Italian Christmas bread. If this is not available then add trifle sponge fingers
- 1 vanilla pod, halved with the seeds scraped out
- 150 grams icing sugar
- 200 ml whipped cream, beaten until small mounds form when you remove the whisk or mixer from the bowl
- Cocoa powder
- Dark chocolate, grated for garnish

#### What to do:

1. Mix the espresso, caster sugar and amaretto in a large bowl. Cut the panettone into 1-centimetre-wide slices and add them to the coffee mixture. Leave it to infuse well.
2. Mix the vanilla seeds, mascarpone and icing sugar in another bowl. Add the whipped cream and mix by gently stirring.
3. Place half of the panettone in a large bowl. Top this with half the mascarpone mixture. Then follow with the last layer of panettone and the final mascarpone layer.
4. Finish with a layer of cocoa powder and place in the fridge for about two hours to stiffen. Before serving, add another layer of chocolate shavings. Enjoy your meal!

Wishing you all a happy, stress-free Christmas meal, with my best wishes -

*Ruth Higginson*

## CHRISTMAS (AND NEW YEAR) PREP

Happy (almost) Christmas everyone, I bet you think it's time to get the heating (or a fire) on and cosy up indoors, rather than spend time in the garden or on the allotment. Well, I'm afraid there are still jobs to do and now is the time to get ahead before spring. It's amazing how you think you have plenty of time, but suddenly everything's sprouting, and the weeds are taking over.



Winter in the border

My garden is maturing now, and perennials are spreading out; plants that fit nicely in a square metre a few years ago, are now looking overcrowded. The winter months, when many plants are dormant, is a good time to assess the garden's structure and layout. A border might need expanding (I don't think I can get rid of any more lawn though), perennials and shrubs might benefit from

moving to give them more space, or I'll adjust for better combinations of colour and form.

With the branches bare of leaves throughout the dormant season, it's possible to prune and renovate deciduous trees, hedges and shrubs. This includes roses of course, though I usually wait until February to do those, but you can also cut back hawthorn, holly, lilac and shrubby honeysuckle. Cuts made now on Japanese maple trees (*Acer palmatum*) and silver birch (*Betula*) will bleed less sap.

While trimming hedges to shape them is better left to late summer or early autumn, dormancy is a good time for more drastic, hard pruning to reduce overall size. You're aiming to take older, less productive stems back to ground level. Evergreens are better left until spring, while *Prunus* species (ornamental cherries) and other stone fruit should be pruned in summer to avoid silver leaf disease.

If you're growing fruit in the garden or – like me – on the allotment, there's plenty you can do to maximise your crop next year.

Large clumps of rhubarb can be lifted and divided now. Sometimes the centre gets unproductive as the plant spreads outwards, so lifting lets you split it, cut out the middle and replant, enriching the soil first with well-rotted manure.



Photo by Rob Wicks on Unsplash

You can start forcing a clump this month by putting it under a bucket, bin or a proper forcer – anything that cuts out light and gives it a little insulation and warmth. You should be able to harvest the lovely, sweet and tender pink stems about seven or eight weeks later. It's better not to use one of your recently divided plants as they'll be feeling a bit stressed. Only force the clump every other year, but if you've just split your plants, next year you'll have another ready to go. Handy!

Although they can last longer, it's been a decade since I first planted my raspberry canes on the allotment and, given a couple of challenging growing years, I think they are beginning to lose productivity. So, I've treated myself to some more canes. I'll dig out the old canes (which are pretty shallow rooted so won't take long) before digging in some well-rotted manure and planting the canes about 45cm apart, firming them in well. Then I'll mulch with some good garden compost.

If you like a gooseberry (and – if you remember the A-Team – who doesn't like a gooseberry, fool), keep them productive by pruning now. Cut back stems crowding the centre and establish a good framework, then prune back sideshoots to three buds. Blackcurrants will benefit from removing about a quarter of the oldest stems as younger shoots will bear most of next year's fruit.

Get just a few of these jobs done and – though it won't seem like it at first – consider the



improvements to your plants a gift to yourself.

## Postscript

Following a fantastic evening with Brenda Eyers (thank you, Brenda) demonstrating five festive flower arrangements, our speaker evenings take a break in December and January.

We return on Wednesday 5 February when Ben Pope takes us 'Treading gently through the borders'. This is a Zoom meeting, and we welcome guests at no charge – just get in touch at [dedhamgardening@gmail.com](mailto:dedhamgardening@gmail.com) and we'll send you the details nearer the time.



Ben Pope

Ben supports Perennial, the Garden Charity and has studied horticulture for the last 21 years. He regularly writes for Gardens Illustrated and teaches at the Chelsea Physic Garden.

*Elliott Frisby*

[dedhamgardening.wordpress.com](https://dedhamgardening.wordpress.com) - QR code



History is one of the favourite subjects of many of our children and the topics which we have in school this term certainly encourage curiosity and excitement about the past.

In **Class R**, children have learnt about Remembrance and Bonfire Night and through the continuous provision in their indoor and outdoor classrooms children have had the opportunities to explore their learning in lots of different ways.

In **Class I**, children have learnt about Mary Seacole and Florence Nightingale. Class I led an assembly all about Mary Seacole during Black History Month and they also had a visit from Mrs Jones who talked about modern hospitals and how they're different from the past.



Class 1 - Learning about modern hospitals

In **Class 2**, children have learnt about the Great Fire of London and they enjoyed a day immersing themselves in



Class 2 - Great fire of London day

life in 1666. They learned about different skills needed for work which was common at the time, they re-enacted how the fire was stopped and they also looked at personal belongings by excavating what was left of the charred city.

In **Class 3**, children have learnt about the ancient Egyptians. One of the favourite lessons of the topic was certainly re-enacting the process of mummification! Alongside this, in art, children designed and created ancient Egyptian burial masks.



Class 3 - Mummification

In **Class 4**, children have learnt about Roman Britain and they took the opportunity to visit Colchester Castle.



Class 4 - Visit to Colchester Castle.

In lessons, they have explored the changes that took place in Britain after the Roman invasion and learned about how the Romans were able to build such an empire.

In **Class 5**, children have learnt about ancient Greece and focused on the 'golden age' of Athens and the legacy which impacts our lives today. As well as learning about the Gods, theatre, the Olympics, and life in Sparta, there was also an 'ostracism' in class when children made ostracons and voted to decide which Athenian should be exiled for ten years.



Class 5 - with their Ostracons

In **Class 6**, children have learnt about the Victorian era, focusing on developments in technology and medicine, and comparing town and country life. The class especially enjoyed a Victorian-themed day when the school hall was transformed into an authentic Victorian classroom in the week leading up to Queen Victoria's Diamond Jubilee. They were led through lessons in the '3 Rs' and employed their detective skills to solve mysteries involving genuine artefacts.



Class 6 -Victorian day

## DEDHAM COMMUNITY CHRISTMAS PARTY.



We are looking forward to giving the Dedham Community their annual party! The date is set for 11<sup>th</sup> January 2025 at the Assembly Rooms as normal.

Last year Ninety people accepted the invitation, and we are looking for more people this year! Please note we do cater for Wheelchairs users. Guests can look forward to a three-course meal, followed by great singing from our Dedham born entertainer, Graham Long.

All you need to be is a minimum age of 60 years and your partner can be younger, and you need to be a Dedham resident. So, if you are not already on our invite list or you know someone that would like to be on the list, please email your details to [miles@mlpanels.com](mailto:miles@mlpanels.com) to be included.

Please include the following in your email. Full name/s, address including post code, landline and mobile telephone number/s.

The Dedham Community Christmas Party is all about supporting and strengthening the community spirit in Dedham and as well as helping the lonely.

*Miles Wilson*

## ARDLEIGH SURGERY

### Farewell to Dr. Lenart

We would like to express our sincere gratitude to Dr. Lenart for his many years of dedicated service to Ardleigh Surgery. He retired on November 30th, 2024, after working at the surgery since 2003 and becoming a partner in 2016.

Dr. Lenart was known for his kindness, thoughtfulness, and patient-centred approach. We wish him a happy and healthy retirement, filled with joy and adventure.

### Welcome to Dr. O'Carroll

We are pleased to welcome Dr. Michelle O'Carroll to our team. Dr. O'Carroll is an experienced GP with a special interest in diabetes and women's health. We are confident that she will provide excellent care for our patients and be a valuable asset to our team.

### Important Notice: Transition to Anima Online Platform

Starting in February 2024, we will be transitioning to the Anima online digital platform for accessing GP services and initial consultations. Please register with the NHS app to prepare for this change. Further information on registering with Anima will be provided as soon as it becomes available.

### Winter Vaccinations

- **Flu:** If you are eligible and haven't had your flu vaccination yet, please book an appointment at one of our flu clinics or ask your clinician during your next appointment.

- **RSV:** The Respiratory Syncytial Virus causes bronchiolitis in infants and chest infections in older adults. The vaccine is now available for eligible individuals, those aged 75-79 and pregnant women over 28 weeks.

- **Pneumonia:** The pneumonia vaccine is available for those over 65 and some under 65 with specific conditions. Please book an appointment to receive any of these vaccinations.

### Winter Demands on GP Services

As winter approaches, demand for GP services typically increases. Please be patient and considerate when contacting the surgery. We continue to provide approximately 3948 clinician appointments per month for our 7500 registered patients. To ensure timely access for all patients, please consider using the pharmacist first service for minor ailments.

### Join Our Patient Participation Group

We encourage you to join our Patient Participation Group to have a say in how our surgery is run. The group aims to improve services and facilities for patients. This group provides a platform for patients to talk directly to the GPs and practice manager and you will be the first to know of any changes to how our practice is run.

If you are interested in joining please contact the surgery.

Wishing You a Happy Holiday Season

We wish you all a very happy Christmas and a healthy and prosperous New Year.

*Ardleigh Surgery Doctors*



# Christmas Wreath Workshop

with Renown Florist  
Gaye Drummond

Tuesday 3<sup>rd</sup> December  
In the Magical Winter Garden  
The Crown  
Stoke by Nayland  
CO6 4SE

Welcome Fizz at 6pm  
Sponsored by  
Peter Graham Wines

Hot light Supper  
Mince Pie & Coffee

Tickets £55 from 07795 909471  
or Little Merchant Dedham.

Please bring a large bucket of  
evergreen foliage





*Heaters on, but please dress cosily with warm footwear!*

# DEDHAM



## YOUTH CLUB

Every Friday 19:30 - 21:15

COOKING GAMES

SPORTS MUSIC AND MORE!

Ages 11-16

£2 Entry Fee

Interested in joining?  
Contact us:  
dedhamyouthclub@gmail.com

The Duchy Barn,  
Royal Square,  
CO7 6AH

Supported by  
EAST ANGLIA  
YOUTH SERVICE

Follow us on  
Facebook:  
Dedham Youth Club

## GUIDE DOGS.



Happy Christmas everyone,  
love and cuddles from Serge xx

## Stour Valley Arts & Music

### Illustrated Talk on Kathleen Ferrier, her life and legacy - Paul Campion

Sunday 19<sup>th</sup> January 2025.

At the Constable Hall, East Bergholt CO7 6TP at 4pm

Tickets £12 or buy a season ticket for £54. Tickets can be purchased from the Booking Secretary using the booking form or online from TicketSource. Unless the lecture is sold out in advance tickets will be available on the door.

Paul is a former Master of the Worshipful Company of Musicians. He has a lifelong interest in music, especially opera. He is the author of "Ferrier - a Career".

Contact Doreen Weatherall.  
Tel: 01206 298426 or email  
[svamtickets@btinternet.com](mailto:svamtickets@btinternet.com)



**The Magic Flute by Mozart from Glyndebourne 2019**

Wednesday, December 11th, 2024  
Assembly Rooms 7:30 PM - 10:00 PM

We are delighted to be able to present for Christmas Glyndebourne's 2019 adaptation of Mozart's Magic Flute. The production is an amazing spectacle and reimagining of the story with stunning puppetry and dance and, of course, wonderful singing. Definitely not one to be missed and bound to be popular so make sure you book early for this special one off show.

Tamino, a prince lost in a foreign land, is being pursued by an enormous monster. He is rescued by three mysterious ladies, who kill the monster and give Tamino a Magic Flute together with a picture of Pamina, daughter of the Queen of the Night, with whom he falls instantly in love.



**The Critic - Directed by Anan Tucker 2024 (15)**

Wednesday, January 15th, 2025  
Assembly Rooms 7:30 PM - 10:00 PM

Academy Award Nominee Sir Ian McKellen (The Lord of the Rings, The Good Liar) stars as a powerful London theater critic who lures a struggling actress into a blackmail scheme with deadly consequences.

A suspenseful thriller co-starring Gemma Arterton (Quantum of Solace), Mark Strong (Tinker Tailor Soldier Spy) and Lesley Manville (Mrs. Harris Goes to Paris).

Tickets £5 will be available online on our website or in person at St Helena Hospice shop in Dedham High Street or on the door or our Box Office on 0333 666 4 466



## DECEMBER 2024

- Sunday 1<sup>st</sup> - 9.30 am, Dedham Church - Rise and Shine.
- Sunday 1<sup>st</sup> - 5.00 pm, Dedham Church - Evensong.
- Monday 2<sup>nd</sup> - 12.30pm, Monday Lunch Club, Essex Rose Tea Room.
- Monday 2<sup>nd</sup> - 6.30pm, Dedham Parish Council Meeting, Duchy Barn.
- Sunday 8<sup>th</sup> - 11am, Dedham Church - Holy Communion.
- Wednesday 11<sup>th</sup> - 7.30pm, The Assembly Rooms - Dedham Films, **THE MAGIC FLUTE.**
- Sunday 15<sup>th</sup> - 9.30am, Dedham Church - Matins.
- Sunday 15<sup>th</sup> - 6.00pm, Dedham Church - Carol Service.
- Sunday 22<sup>nd</sup> at 9:30am, Dedham Church - Holy Communion.
- Christmas Eve - 11.00pm, Dedham Church - Midnight Communion.
- Christmas Day - 10.00am, Dedham Church All-Age Communion.

## JANUARY 2025

- Sunday 5<sup>th</sup> - 9.30 am, Dedham Church - Rise and Shine.
- Sunday 5<sup>th</sup> - 5.00 pm, Dedham Church - Evensong.
- Monday 6<sup>th</sup> - 6.30pm, Dedham Parish Council Meeting, Duchy Barn.

- Saturday 11<sup>th</sup> - The Assembly Rooms, 12pm Community Party.
- Sunday 12<sup>th</sup> - 11am, Dedham Church - Holy Communion.
- Wednesday 15<sup>th</sup> - 7.30pm, The Assembly Rooms - Dedham Films, **THE CRITIC - Directed by Anan Tucker (2024)**
- Sunday 19<sup>th</sup> - 9.30am, Dedham Church - Morning Praise
- Sunday 26<sup>th</sup> at 9:30am, Dedham Church - Holy Communion.

---

## WEEKLY EVENTS

### Monday

- Meet up Mondays - The Sun Inn, 11am to 12pm.
- [Social Table Tennis - Dedham Sports Club, 10:30am to 12:30pm.](#)
- Watercolour Painting Group, Duchy Barn, 10am to 12pm.
- [Mobile Post Office - Royal Square 13:30 to 15:30.](#)

### Tuesday

- Coffee morning - The Duchy Barn, 10:30 to 12pm.
- [Mobile Post Office - Royal Square 09:00 to 11:00.](#)
- Dedham Baby and Toddler Group Dedham Sports Club, 10am to 12pm (Term time only)
- [Dedham Carpet Bowls Club - Dedham Sports Club, 7pm to 9pm.](#)

### Wednesday

- Bridge in Dedham - Assembly Rooms, 1.30-5.00pm.

### Thursday

- Coffee morning - The Duchy Barn, 10:30 to 12pm.

### Friday

- Dedham Youth Club - The Duchy Barn, 7.30pm to 9.15pm.



**Kingsleigh**  
Property Consultants

**High Street, Dedham, CO7 6DE**  
**01206 940123**



### Brook Street, Dedham, CO7 6AD

Commanding an outstanding position in the heart of the historic village of Dedham, this detached family home offers spacious accommodation, set on a plot of approximately one third of an acre (STS).

The property also benefits from a detached garage, off-road parking and glorious gardens - with views to the rear.

Offered with no onward chain.

Council Tax: Band F

Freehold

EPC Rating: E

Guide Price £1,150,000

## Award-winning local, independent agent

- Fully immersive 360° tours
- Bespoke particulars
- Floorplans
- Social media adverts
- Professional photos
- Premium Rightmove listings
- Experienced, award-winning team
- Associate office in Park Lane, London



**SALES & LETTINGS**



[sales@kingsleighresidential.co.uk](mailto:sales@kingsleighresidential.co.uk)  
[lettings@kingsleighresidential.co.uk](mailto:lettings@kingsleighresidential.co.uk)  
[www.kingsleighresidential.co.uk](http://www.kingsleighresidential.co.uk)

# BAILAND

CONSTRUCTION LIMITED

**EXQUISITE ATTENTION TO DETAIL**

TOAD HALL  
THE HEATH, DEDHAM  
ESSEX, CO7 6BT  
01206 323230

**WWW.BAILANDCONSTRUCTIONLIMITED.CO.UK**  
**ENQUIRIES@BAILANDLTD.CO.UK**

## Bland Landscapes Ltd

[www.blandlandscapes.co.uk](http://www.blandlandscapes.co.uk)

### Tree Work Specialists

Felling  
Pruning  
Reducing  
Re-shaping  
Stump Grinding

### Deliveries

Compost small &  
large loads  
Seasoned Logs  
Green Waste  
Shredding

### Landscaping

Fencing  
Driveways & Patios  
Turving  
Planting  
Grass Cutting



**Tel: 01206 230882 Email: [blandlandscapes@outlook.com](mailto:blandlandscapes@outlook.com)**

Ivydene, Frating Road, Colchester, Essex, CO7 7SY



**RIBA Chartered Architect**

**Mark Fage**

Tel: 07976 655387 LONDON ESSEX SUFFOLK [www.markfage.com](http://www.markfage.com)



clinic1  
facial aesthetics

by Julia Foster

MSc, RM, SCPHN, Aesthetic Nurse



**20% OFF**  
Quote code  
**Dedham**

T&Cs apply

- Anti-wrinkle injections
- Dermal Fillers
- Body Contouring
- Aqualyx fat dissolving
- Teeth grinding - Facial Slimming
- Nefertiti Neck lift - Necklace lines
- Tear Trough correction
- Nonsurgical rhinoplasty
- Facial contouring packages
- Gift vouchers available

07973 345053 

[www.clinic1.co.uk](http://www.clinic1.co.uk) 

[cliniconeessex](https://www.instagram.com/cliniconeessex) 

[juliacfoster@yahoo.co.uk](mailto:juliacfoster@yahoo.co.uk) 

Clinic One, Clarkes farm, Harts Lane, Ardleigh, CO7 7QH 

Dedham Parish Magazine thanks the Advertisers for their support

# Right at Home Colchester & District

Quality Care & Support, from hourly visits to Live-In care.



## Our services include:

- Companionship
- Transportation and errands
- Meal preparation
- Light housekeeping
- Help with washing
- Personal care
- Medication support
- Post-operative support
- Live-In care
- Specialist Dementia care
- Hospital to home

and much more...

**01206 932792**

## Contact us today on:

-  01206 932792
-  [colchester@rightathomeuk.com](mailto:colchester@rightathomeuk.com)
-  [www.rightathomeuk.co.uk/colchester](http://www.rightathomeuk.co.uk/colchester)
-  [www.facebook.com/rightathomecolchesteranddistrict/](https://www.facebook.com/rightathomecolchesteranddistrict/)



Dedham Parish Magazine thanks the Advertisers for their support

WWW.SKYLARKSOCIAL.CO.UK



INFO@SKYLARKSOCIAL.CO.UK



# SKYLARK.

**SKYLARK.**

**FARM SHOP. TERRACE.  
VINEYARD TOURS.  
EVENTS & PRIVATE HIRE.**

**SERVING LOCAL BEER, WINE, SPIRITS & SOFT DRINKS.  
TEA, COFFEE, CAKE & A WIDE RANGE OF SUSTAINABLE PRODUCE.**

PRETTYFIELDS VINEYARD, DEAD LANE, ARDLEIGH, CO7 7PF



**WWW.SKYLARKSOCIAL.CO.UK**



**@SKYLARKSOCIAL**



**/SKYLARKSOCIALLTD**



**INFO@SKYLARKSOCIAL.CO.UK**



**01206 231 593**

**VISIT OUR WEBSITE FOR EVENTS  
SCHEDULE AND BOOKINGS**



PRETTYFIELDS VINEYARD, DEAD LANE,  
ARDLEIGH, ESSEX, CO7 7PQ

KEEP UP TO DATE ON OUR SOCIAL MEDIA



**SKYLARKSOCIAL**

# Richardson & Rothwell

Unit 1, Dedham Vale Business Centre  
Manningtree Road  
Dedham  
Colchester  
CO7 6BL

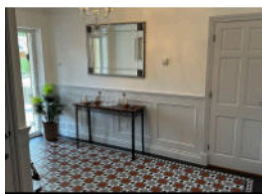
Tel: 01206 323 732

Email: [enquiries@richardsonandrothwell.co.uk](mailto:enquiries@richardsonandrothwell.co.uk)

## MAKE US YOUR FIRST CALL FOR ALL OF YOUR PLUMBING AND HEATING REQUIREMENTS

We are your local reliable plumbing company. We undertake all plumbing works from heating servicing, heating system installs, bathroom suites, air source & ground source pumps as well many other plumbing requirements. Please contact us and we will be happy to offer a free quotation and any information that you may require.

Telephone 01206 323 732 or email [enquiries@richardsonandrothwell.co.uk](mailto:enquiries@richardsonandrothwell.co.uk)



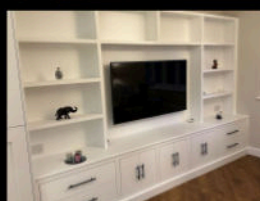
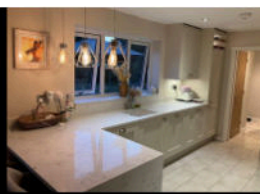
## Copford Woodcraft

Small local company with 40 years experience under our belt. We design and install Bespoke/ Custom kitchens, Built-in wardrobes, Media units, Wall panelling and much more.

Email: [david-copfordwoodcraft@outlook.com](mailto:david-copfordwoodcraft@outlook.com)

Telephone: 07950026032

Find us on:



FREE DESIGN AND PERSONAL CONSULTATION WITH NO OBLIGATION



Call for a free quotation

Office: 01255 886422

Mobile: 07939 554197

Website: [www.spenceelec.co.uk](http://www.spenceelec.co.uk)

24 Hour Emergency Call Out

## All Electrical Work Undertaken Domestic & Commercial

ECA / NAPIT Approved Electrical Contractor

Fully Insured. New Installation.

Rewires and Upgrades. Solar PV & Battery storage

Additional Sockets and Lighting. EV Chargers

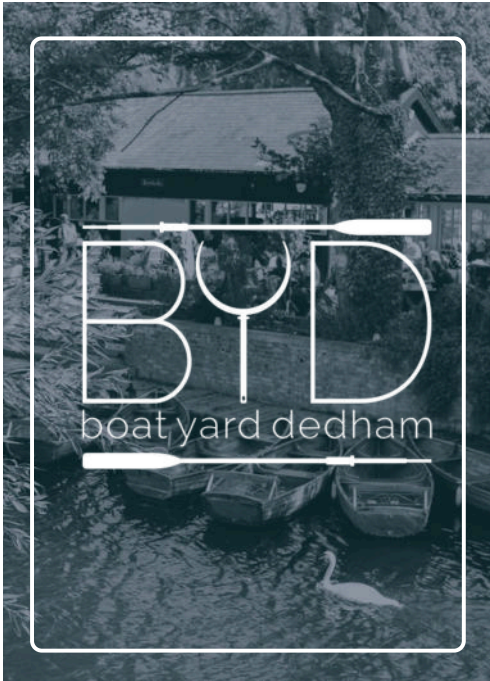
Garden / Garage Power and Lighting.

Full Electrical Testing and Inspection Service.

Domestic Electrical Fault Finding and Repair.

**Prompt Reliable Service**

Dedham Parish Magazine thanks the Advertisers for their support



*Upcoming  
Boatyard Events*

Sunday Roasts Every Week



Vouchers & Christmas Hampers



Quiz Nights Return In 2025



Valentine's Day Supper Club

[www.theboatyarddedham.co.uk](http://www.theboatyarddedham.co.uk)

01206 323153

📱@boatyarddedham



Antique & Vintage Jewellery • Rare Coins  
Mid Century Glass • Rare Die-Cast Models  
Antique Silverware • Sculptures  
*Artisan Crafts • Lighting*  
**Cabinets available to rent**



**VOLUNTEERS NEEDED**



Dedham Old Boys Football Club is on the hunt to bolster its backroom team. We're looking for likeminded individuals to get involved and join this historic club. A number of roles are available including:

**ADMIN | BAR MANAGEMENT | CATERING  
FIRST AID | MATCH DAY PREP | SOCIAL MEDIA**



Interested? Know someone that is?  
Email: [dobfc@outlook.com](mailto:dobfc@outlook.com)  
Tel: Jan Hammond 07769 342178

**FAÇER BESPOKE**

Richardson  
Rothwell

Dedham Parish Magazine thanks the Advertisers for their support



# DISCOVER THE POWER OF STEAM...

Upcoming Open Mornings:  
**Friday 4th October**  
**Saturday 5th October**

Visit [colchesterhighschool.co.uk](http://colchesterhighschool.co.uk) or call 01206 589 998 to book your place.



**COLCHESTER**  
 PREP AND HIGH SCHOOL

A co-ed independent school for ages 2-16

\*Top fee paying schools with no sixth form  
**9th** in The Times Parent Power Guide 24\*



## Your local solution for fully fitted blinds and plantation shutters.

With over 20 years of experience in the trade.

A wide range of shutter styles available to suit your needs, expertly installed to the highest standard.



**Tendring**  
 Blinds & Shutters

★★★★★ rated excellent on [Google](#) [Checkatrade](#)

MULTIPLE OPTIONS FOR  
 Bi-Fold Doors

Call us today for your  
**FREE QUOTATION**

- Rollers
- Verticals
- Romans
- Perfect Fit
- Venetians
- Intu
- Day & Night
- Pleated
- Skylight
- Motorisation
- VS2 Slide
- Plantation Shutters

**01255 474241**  
[www.tendringblinds.co.uk](http://www.tendringblinds.co.uk)



Dedham Parish Magazine thanks the Advertisers for their support



Osteopathy and Western Medical Acupuncture Clinic in the heart of Dedham providing treatment for:

- Back pain & sciatica
- Arthritis pain & stiffness
- Neck & shoulder pain
- Trapped nerves
- Tennis/Golfer's elbow
- Tendinopathy
- All joint strains
- Muscle/ligament strains



*Dedicated to getting you better.*



**DEDHAM  
OSTEOPATHY**

**Luke Jackman Bsc Hons Ost  
Registered Osteopath**

Tel: 01206 323 239 / 07974 144593  
[www.dedhamosteopathy.co.uk](http://www.dedhamosteopathy.co.uk)

One hour initial appointment • Free on-site parking • Open weekdays and evenings

**Joined up  
Legal  
Services**

and your  
business



for you

your  
family

**FJG**

FISHER  
JONES  
GREENWOOD  
SOLICITORS

**01206 835300**

Visit our  
website [fjg.co.uk](http://fjg.co.uk)  
or email [info@fjg.co.uk](mailto:info@fjg.co.uk)



**HORIZON  
LANDSCAPES  
EAST ANGLIA LTD**

**Design, Construction, Restoration, Maintenance**

Email: [info@horizonlandscapesea.co.uk](mailto:info@horizonlandscapesea.co.uk) Tel: 01206 322646

[www.horizonlandscapesea.co.uk](http://www.horizonlandscapesea.co.uk)





**BOND**  
**PLUMBING & HEATING SERVICES**

Oil - Gas - LPG

-  Domestic plumbing & heating services
-  Boiler installations, servicing & repair
-  Unvented hot water cylinders
-  Landlord gas safety certificates

Based in Langham  
 Tel 07590372433  
 Email [nick@bondphs.com](mailto:nick@bondphs.com)  
 Web [www.bondphs.com](http://www.bondphs.com)

Your local  
**tree specialist**



SPECIALIST TREE SURGERY • ARBORICULTURAL CONSULTANCY

**07841 623027**  
**[www.jftreespecialist.com](http://www.jftreespecialist.com)**

 FULLY INSURED AND COUNCIL APPROVED  
 FREE ESTIMATES AND EXPERT ADVICE

01206 231720 • [INFO@JFTREESPECIALIST.COM](mailto:INFO@JFTREESPECIALIST.COM)

**What we do**

- ✓ Tree Surveys
- ✓ Planting and Aftercare
- ✓ Fruit Tree Pruning
- ✓ Felling and Dismantling
- ✓ Tree Monitoring
- ✓ Hedge Cutting
- ✓ Stump Removal
- ✓ Fencing
- ✓ Landscaping
- ✓ Logs and wood chip supplied
- ✓ Mobile sawmill service
- ✓ Mowing contracts
- ✓ Crown Reduction, Lifting, Thinning and Cleaning



**Rehab at Home**

Our team of Chartered Physiotherapists and Rehabilitation Assistants will be with you every step of the way, by creating and regularly assisting with your personalised exercise plans to help you become stronger, fitter, more mobile and independent in the comfort of your own home.




**ann mason**  
 CARE



**Ann Mason Care**  
 Holton Business Park, Holton St. Mary, Colchester, CO7 6NN.  
 Telephone: **01206 233372** Visit: [www.annmasoncare.co.uk](http://www.annmasoncare.co.uk)

Dedham Parish Magazine thanks the Advertisers for their support

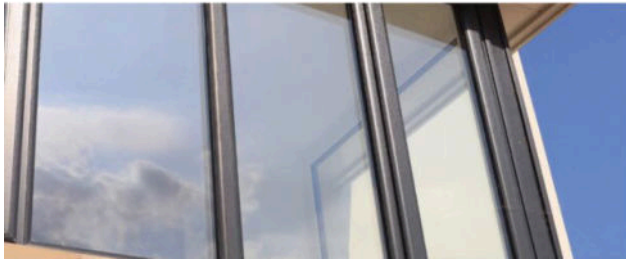


**SMS  
uPVC**

**Are you THINKING ABOUT making  
HOME IMPROVEMENTS this year?  
Why not contact us to see how we can help you!**

**01206 845923**

**We are more than windows & doors**  
smsupvc.co.uk | info@smsupvc.co.uk



**DEDHAM PARISH CHURCH**  
**Guided Church and Tower Tours.**

**AVAILABLE ALL YEAR**  
"FANTASTIC VIEWS", "I LOVED RINGING  
THE BELLS"

**BOOK A GUIDED CHURCH TOUR,  
TOWER TOUR OR BOTH WITH OUR  
EXPERIENCED TOUR GUIDES.**

Please email in advance to [stmaryda@gmail.com](mailto:stmaryda@gmail.com)  
or call the Parishes Office on 01206 322136.

The cost is £5 per person. Family ticket available  
from £10 for up to 5 people. For Tower Tours,  
children between the ages of 8 and 16 must be  
accompanied by an adult. Unfortunately we  
cannot accept any children under the age of 8.

A new Tower Tour video has just been produced  
in memory of Roy Laverick who was a Tower  
Tour guide. You can find it on YouTube, just enter  
this link - [https://youtu.be/tf\\_aG4zREiM](https://youtu.be/tf_aG4zREiM).

**FOOD HYGIENE RATING**  
1 2 3 4 5

**Dedham**

**Thursday 4-8.30pm**

**Near Primary School**  
**CO7 6BZ**

**White Gold Fish & Chips**  
**BURGERS**  
**CHICKEN**

*Local & the Best*

Dedham Parish Magazine thanks the Advertisers for their support



**Tel: 01206 322674**  
**Mob: 07732 039726**

Email: [nicola.pedicare@gmail.com](mailto:nicola.pedicare@gmail.com)  
Web: [www.pedicarefootclinic.co.uk](http://www.pedicarefootclinic.co.uk)

**Tel: 01206 322674**  
**Mob: 07477 006689**

Email: [aspire.dedham@gmail.com](mailto:aspire.dedham@gmail.com)  
Speak to Sam

Dedicated to the care of your feet

Sports Massage, Reflexology & More

3A Dedham Vale Business Centre, Manningtree Road, Dedham CO7 6BL

## JP WILSON PLUMBING AND HEATING

Gas Engineer  
Bathroom Installation  
Boiler Installation  
Faults & Servicing  
Landlord Safety Certificates  
Unvented Systems  
Fully Insured

TEL: 01206 322141  
MOBILE: 07445 270703  
EMAIL: [jon@jpwplumbing.co.uk](mailto:jon@jpwplumbing.co.uk)  
[www.jpwilsonplumbingandheating.co.uk](http://www.jpwilsonplumbingandheating.co.uk)

East Lane  
Dedham  
Essex CO7 6BE



[HeatingOilToday.co.uk](http://HeatingOilToday.co.uk)

Tel : 01473 396260

Home Heating Oil

Same Day Delivery

Baby Tankers

Minimum 200 Litres

7 Days a Week

7am - 7pm

## PHILIP STRANGWARD – ACCOUNTANT

(Dedham based)

Full service at competitive rates, including:

- \* Limited companies
- \* Bookkeeping
- \* Corporation tax
- \* Self assessment
- \* Vat returns
- \* R&D tax claims
- \* Making tax digital
- \* IR35 compliance
- \* COVID-19 support
- \* Company formations
- \* Business plans
- \* Payroll

Call Philip Strangward on  
**01206 643000 or 07880 550000**  
[pstrangward@gmail.com](mailto:pstrangward@gmail.com)  
 for free initial consultation  
[www.philipstrangward.co.uk](http://www.philipstrangward.co.uk)



## HUNTERS BROOK

The Kitchen & Bedroom Specialists

All aspects of building work eg: extensions, removal of walls etc, plastering, tiling, electrical & plumbing undertaken as we project manage your kitchen from start to finish.

07901-557046 (Terry)

[sales@huntersbrook.co.uk](mailto:sales@huntersbrook.co.uk)

"Designers & fitters covering Herts & Essex"



## HALL FOR HIRE

 Dedham Sports Pavilion is available for hire. Ideal for private parties, community groups and small business events. Can accommodate up to 60 people. Modern kitchen and bar on request. Beautiful location overlooking playing fields, small car park, outside veranda, ramped access. Preferential rates for community groups. Please call me to discuss your requirements. Nicola Baker 07860 173214

## P.J. SAMPSON BUILDERS

**COMPLETE BUILDING SERVICE**  
30 Years' Experience

*Tel: 01206 230619*  
66 Tile Barn Lane Lawford

**Brick work Specialist**  
**Painting & Decorating**  
**Plastering and Carpentry**  
**Plumbing & Electrics**  
**Roofing**

**All Property Maintenance**

**ELEANOR'S**  
PAINTING & DECORATING SERVICES



INTERIOR AND EXTERIOR

CONTACT US TODAY FOR A  
**FREE NO OBLIGATION QUOTE**

All Female Team | City and Guilds Qualified

Please call: **07414 768 950**

eleanorspaintinganddecorating@gmail.com



**CHARLOTTE BRISCOE**

INTERIORS

Curtains and Blinds Specialists

Curtains, Romans & Pelmetts

Blinds & Shutters

Poles & Tracks

Upholstery & Headboards

Fabrics, wallpaper & paint

Cushions & Lampshades

Design and fitting included

01255 880775

07872347291

[www.charlottebriscoeinteriors.co.uk](http://www.charlottebriscoeinteriors.co.uk)



**nantmor**  
BLINDS & SHUTTERS

Local manufacturers and suppliers of  
quality Blinds, Shutters and Awnings  
for over 40 years.

Roller • Vertical • Venetian  
Cellular • Shutters • Roman  
Allusion • Awnings • Day & Night  
Perfect Fit • Wood Venetians

Call today to arrange a free no obligation consultation or visit our fantastic  
showroom for inspiration at 1-2 Brindley Road, Clacton On Sea. C015 4XL



01255 475044 / 01206 791766



[info@nantmorblinds.com](mailto:info@nantmorblinds.com)



[www.nantmorblinds.com](http://www.nantmorblinds.com)



Find us on Facebook



Home Care Visits



ann mason  
CARE



Passive Care Monitoring



Video Care Visits

Ann Mason Care Holton Business Park, Holton St. Mary, Colchester, CO7 6NN.  
Telephone: 01206 233372 Visit: [www.annmasoncare.co.uk](http://www.annmasoncare.co.uk)



ACT, REDUCE, SAVE.

Knowing what was to come, would you have done everything in your power to prevent COVID-19?

**OF COURSE YOU WOULD HAVE!**

The volume of CO2 produced each day from the entire population is putting the planet in danger. To avoid a climate pandemic, that will have *critical consequences* on our future, we need to **ACT** now.

To **REDUCE** our carbon footprint, let's start with improving our homes. **HIGAIN Termo Clima** is an established UK company that has been installing renewable technology solutions since 1988.

We can offer a result-based planning consultancy service ranging from application to design to structure; and will thereby reduce the CO2 produced by your home, improve your energy efficiency and **SAVE** you money - as well as the planet.

WE ARE APPROVED INSTALLERS OF:



SOLAR PANELS



HOME BATTERIES

SOLAR THERMAL



HEAT PUMPS

SWITCH TO GREEN ENERGY



ENQUIRE NOW! Tel: 074 15118 497 / Mob: 01206 322037 E: [sales@higaintc.com](mailto:sales@higaintc.com)



Please mention **Dedham Parish Magazine** when you contact any of these Advertisers





# Friendly, Professional Chauffeur



- ✓ Chauffeur driven Mercedes Benz E Class
- ✓ Serving Essex and Suffolk
- ✓ Fully licenced, trained and insured
- ✓ Courteous, professional and friendly
- ✓ Based in Ardleigh, Colchester

Call us today for a **free quote**

## 07889 924 307

[valleyexecutivetravel.co.uk](http://valleyexecutivetravel.co.uk)

[info@valleyexecutivetravel.co.uk](mailto:info@valleyexecutivetravel.co.uk)

2yrs +

## LANGHAM PRE-SCHOOL

VILLAGE LOCATION JUST 5 MINUTE DRIVE FROM:  
ARDLEIGH, HIGHWOODS, MYLAND,  
BOXTED, DEDHAM & GREAT HORKESLEY

**Up to 30 free funded hours available**  
**We accept 2 year funding**

For more info call:  
**07930 963638**

**Come and explore...**  
Langham Community Centre  
School Road  
Langham  
CO4 5PA





Charity Commission no. 1135120  
[www.langhampreschool.co.uk](http://www.langhampreschool.co.uk)

## S. J. Smith

### Plumbing and Heating Engineers

**From an extra radiator  
T to a full heating system**

- \* Boiler changes
- \* Bathroom suites
- \* *Aqualisa, NewTeam*  
& other showers
- \* Electric showers
- \* All heating and  
plumbing repairs

FREE ESTIMATES  
CORGI REGISTERED

22 Bullock Wood Close

## COLCHESTER

## 843 493

## Daniel Williams

### ELECTRICIAN





- Rewires & Additional Points
- Fuse Board Replacement
- New Builds, Kitchens & Bathrooms
- Electrical Testing / Fault Finding

07818 487419

— Mobile —

01255 861791

— Office —

daniel.williams35@btinternet.com



- Roof Repairs
- Fascia, Soffits & Guttering
- Re-Roofs
- Slate & Tile
- Flat Roofs



## Leisure Hire



### Marquee and Equipment Hire

- Marquees erected on most surfaces •
- Awnings • Walkways •
- Extensions to Buildings • Linings •
- Lighting • Furniture •
- Flooring & Staging • Heating •

Summer or Winter  
Weddings Anniversaries Corporate

*Brochure upon request*

**(01206) 242 196**

leisurehire@gmail.com

Mobile

## fresh fish shop



**Dedham High street**

**THURSDAY 2pm - 2.30pm**

Straight from Lowestoft fish market!  
A wide selection of fresh fish, smoked  
fish and seasonal shell fish.

**Every Thursday**  
**2pm- 2.30pm**

by the Dedham memorial

**Deliveries also available in the  
Dedham area on Thursdays.**

Mob: 07967755771 Tel: 01206 303104

## Manningtree Body Repair Centre

**Riverside Avenue West  
Lawford  
Manningtree  
Essex  
CO11 1UN**

**Tel / Fax: (01206) 393 191**

All Vehicle Body Repairs & Refinishing  
work undertaken including:

- Insurance Work, MOT welding,  
Panel Beating and Spraying
- Assistance given to "Non-Fault"  
Third Party Insured
- Collections and Delivery

**Foot Health by Lorraine**  
 Registered Foot Health Practitioner  
 Offering convenient appointments in your own home  
 Trained to assess & treat recognised foot problems

foothhealthbylorraine.co.uk

Qualified and Insured Foot Health Practitioner  
 Mobile Service

- Toenail cutting/trimming
- Corns
- Callus reduction
- Verruca
- Thickened Nail reduction
- Athletes Foot
- Fungal Nail Infection
- Ingrowing Toe Nails
- Diabetic Foot Care



To book your appointment:  
 M: 07531 692372

E: lorraine.foothhealth@gmail.com

Find us on



Open to All regardless of catchment area

From age 2 years...

# Great News

Now offering earlier drop off & later pick-up times.

[www.ardleighpreschool.co.uk](http://www.ardleighpreschool.co.uk)

Tel: 07517 430114

Ardleigh Village Hall, Station Road, Ardleigh, Essex, CO7 7RS



## Dave's Private Hire

Professional and friendly service

Based in Dedham

For all your travel needs:

- Visits to local shops
- Days out
- Airports
- Cruise terminals

Licensed to carry up to 4 passengers

To make a booking please call  
**07834 570479**

davesprivatehire44@gmail.com

## JD Electric

- NAPIT APPROVED
- FULL RE WIRES
- CONDITION REPORTS
- FAULT FINDING
- EMERGENCY CALL OUTS
- FREE QUOTATION

FOR ALL ELECTRICAL WORK PLEASE CONTACT  
**07852319456**  
**D.ELECTRICS@YAHOO.COM**

“  
 Very professional throughout and incredibly punctual which was very much appreciated!  
 Nothing was too much! Thank you very much - would highly recommend.  
 ”

Please mention Dedham Parish Magazine when you contact any of these Advertisers

High Street, Dedham  
Essex CO7 6DF

01206 323351

thesuninndedham.com

   SunInnDedham



THE SUN INN

DEDHAM

## DEDHAM VALE TREE SURGERY

- NPTC qualified, fully insured
- Hedge maintenance and reduction
- Stump grinding
- Chestnut cleft fencing installed
- All tree work undertaken
- Crown reduction and shaping
- Pruning and pollarding
- Felling, sectional dismantling

SPECIALISING IN BIG TREES IN DELICATE SITUATIONS

www.dedhamvaletreesurgery.co.uk **07756811098**



Richard Kimberley Services  
Lawn Mower Service and Repair Centre

Rotary pedestrian, ride-on mowers, rotavators.

Shear sharpening service. Welding expert.

Proven workmanship. Engineering workshop established  
over 30 years.

Competitive, fast service, collection and delivery by arrangement.

Telephone: 01206 230964

Email: rks@richardkimberleyservices.co.uk

88 Hungerdown Lane, Lawford, Manningtree, CO11 2LY

*Hello Lovely Scents*  
*With Suzanne*

If you're looking to make your home smell amazing, look no further! I'm an independent Scentsy Consultant who sells beautiful wax and warmers that are safe. No flames!

Tel: 07517531117



**A.Slocombe**  
**General Builder**

Hard Landscaping,  
Roofing and Property Maintenance

Brickwork, Blockpaving Drives, Carpentry  
No job too small, for free friendly advice  
and estimates phone

**01206 322 884 / 07786 871 364**

**Andrew Ablett**  
**Servicing & Repairs**

Foxash Workshop,  
Foxash, Lawford, CO11 2LR

**TEL: 07917 223274**

Servicing, Repairs, Diagnostics  
Cars - Vans - Motorcycles

**ARDLEIGH**  
**CHIMNEY SWEEP SERVICES**



- Traditional and Power Sweeping
- CCTV Inspections
- Safety Certificate Issued
- Fully Insured

**ANDREW SMITH**

**01206 231718 · 07845 249820**

31 HARWICH ROAD, LAWFORD, MANNINGTREE, ESSEX CO11 2LS

**HOLIDAY COTTAGE**

Long Road East  
**DEDHAM**

Weeks, Weekends & Between Houses.

Tel. 01206 323 345 / 0797 9757 470

[www.holidaycottagededham.co.uk](http://www.holidaycottagededham.co.uk)

E Mail [owlbarn@live.com](mailto:owlbarn@live.com)

**LITTLEBUILD BRICKWORK**

N.V.Q / City & Guild Qualified

All aspects undertaken:  
New Builds, Extensions, Garden Walls  
Repair, Block Paving, Slab Work

**Call for a free quote today**

**Tel: 07881 095818**

**Email: [liddleiain@gmail.com](mailto:liddleiain@gmail.com)**

**Nigel Bruce**

Industrial & Domestic

**ELECTRICIAN**

'The Swift', Upper Street,  
Stratford St Mary, Colchester  
CO7 6JW

**Tel: (01206) 322 751**

**Mob: 07711 225653**

**LAWN CUTTING SERVICE**

Reasonable prices & reliable service

Small/medium sized lawns.

Call Joe - 07986466403

Email - [Joemattthewpreston@icloud.com](mailto:Joemattthewpreston@icloud.com)



## Dedham Tennis Club

- Wide range of membership options
- Friendly club sessions
- Coaching for all ages and abilities
- Junior holiday camps and squads
- Teams in local leagues



**COME AND JOIN US**



@Dedhamlrc



Dedham LTC



Welcoming tennis served to all



## Essex & Suffolk **PEST SOLUTIONS**

*Your local pest control experts for home & business*

- Free advice, fast response
- Highly accredited (NPTA)
- Fully qualified & insured
- Discreet — unmarked vehicles

**Tel: 01473 328092 (Holbrook)**

Email: [info@eandspestsolutions.co.uk](mailto:info@eandspestsolutions.co.uk)



**Make your home perfect**

Bespoke, handmade soft furnishings & upholstery

Contact Annabel  
07539 722496 @sewnimble

## Wendy's Curtains

Professionally made to measure curtains, roman blinds and soft furnishings, with a wide range of fabric samples.



01206 395996



07966 718 414



[info@wendyscurtains.com](mailto:info@wendyscurtains.com)



[www.wendyscurtains.com](http://www.wendyscurtains.com)



For all your lock requirements, please call your local Locksmith, based in Brantham

**07887 686839**

Email: [trevor@towneslocksmiths.co.uk](mailto:trevor@towneslocksmiths.co.uk)

# RE-WRITE YOUR STORY & DEFINE YOUR NEW SELF

Bespoke Practices to Enhance Body Mind & Soul Health

## WHY YOGA?

Unlike other forms of exercise, yoga encompasses all aspects of well-being. It cultivates flexibility, adaptability & resilience both on & off the mat encouraging you to thrive amidst life's constant flux.

### SESSION HIGHLIGHTS

- Asana ~ Movement for strength, mobility, flexibility & to enhance posture & physical presence.
- Pranayama ~ Breathwork to regulate, calm or energise.
- Shastra ~ Insights from ancient wisdom
- Meditation ~ Techniques for mental clarity
- Embodied Rest ~ Deep relaxation practices
- Massage ~ Therapeutic Touch

### WHO ARE THESE SESSIONS FOR?

- Sessions are for anyone looking to transform their life for the better & improve their overall well-being.
- Beginners to Seasoned Practitioners.
- One to one, duo, small groups or opt to join a class

16 Years+ Experience

Over 10,000 Hours Teaching

2000+ Hours Study

Forever Student Compassionate Guide

[www.shekhar.yoga](http://www.shekhar.yoga)

[faye@shekhar.yoga](mailto:faye@shekhar.yoga)

07811112096

@shekhar.yoga

Weekly classes at Dedham Assembly Rooms & The Annexe St Mary's Wivenhoe

Email or Call for a free consultation or use code AUM at checkout for 50% off your first drop in class



**Hewes has been keeping  
Businesses and Families Safe  
and Secure since 1961**

We protect both Commercial and Domestic properties and are a National Security Inspectorate (NSI) Gold installer and can install new systems or upgrade existing equipment.

- CCTV Supply & Installation
- Intruder & Fire Alarms
- Access Control & Gate Automation
- 24 hour Monitoring & Police Response

## Concerned about SECURITY?

Would you like a FREE  
Security Review?



**01206 807218**

**HewesGroup.com**



340 The Crescent, Colchester Business Park, Colchester CO4 9AD

Dedham Parish Magazine thanks the Advertisers for their support



**TALBOOTH**  
HOUSE & SPA

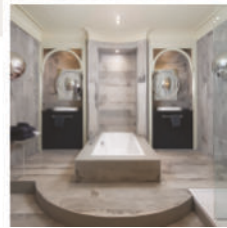
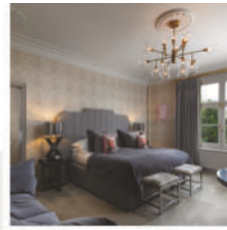
**EXPERIENCE EXCLUSIVE USE**

*Planning a party, special birthday, wedding or event?*

Enjoy the full use of Talbooth House & Spa, including an overnight stay with breakfast.

**FIND OUT MORE**

[www.milsomhotels.com/talbooth-house-spa](http://www.milsomhotels.com/talbooth-house-spa)



**fiducia**  
www.fiduciawealth.co.uk  
01206 321 045

Chartered  
Financial  
Planners



**Award-winning specialists in:**

Financial Planning | Investment Advice | Pensions & ISAs | Tax Planning  
Retirement & Later Life Planning | Gifting of Wealth | Inheritance Tax Planning

Authorised and regulated by the Financial Conduct Authority, registered number 408210

**THE Munnings**  
ART MUSEUM  
1899-1933

**3 April - 20 October 2024**  
*Munnings: Making a Picture*

**Museum & Shop** open 1.30-4.30pm,  
Weds-Sun & Bank Hol Mondays

**Cafe** open 10am-4.30pm,  
Weds-Sun & Bank Hol Mondays

See [www.munningsmuseum.org.uk](http://www.munningsmuseum.org.uk)  
for events listings

Castle Hill, Dedham, 01206 322127  
reg charity no 1161304

*Year Pass only £20 for unlimited visits and free guided tours*

Dedham Parish Magazine thanks the Advertisers for their support