

Dedham

Parish Magazine



Comfort

and Joy

December 2020
& January 2021

DEDHAM PARISH MAGAZINE

FIRST PUBLISHED IN 1876

The deadline for entries is the 10th of the month

DEDHAM PARISH CHURCH

dedham-and-ardleigh-parishes.org.uk

Antony Wilson Vicar

☎ 323 919

Merv McKinney Assistant Minister

☎ 323 919

PARISH OFFICE

Claire Arculus Parish Administrator

☎ 322 136

Charlotte Parker A/Parish Administrator
& Safeguarding

Assembly Rooms ✉ stmaryda@gmail.com

High Street, Tuesday 9-11am

Dedham CO7 6HJ Thursday 11-1pm

CHURCH WARDENS

Vee Druitt ☎ 322 000

Peter Wilson ☎ 323 179

MUSIC

Antony Watson Director of Music

☎ 322 425

DEDHAM PARISH MAGAZINE

Editor: Charlotte Parker

✉ dedhameditor@gmail.com

Advertising: Sara Marshall

✉ dedham.advertising@gmail.com

If you would like a lift to church
contact Ann Shaw ☎ 322 192
or Ruth Higginson ☎ 322 598

Dedham and Ardleigh



HELPLINE

during the Coronavirus pandemic
01206 322025

Please leave a message with your name, phone number
and what you would like help with and someone will get back
to you the same day. For example you may like help to get shopping,
or a prescription, or just to have a friendly chat with someone!

MAGAZINE CONTENT

2. Content
- 3-4 Services & events
5. Christmas events
6. Sing silent night
7. Viewpoint
8. Walk & Talk / Fair Trade
9. Light up Dedham
10. Entry form
11. Christmas Colouring

Features:

12. From the Register
- 12-13 No way over the bridge
- 14-19 3 Bridges

Organisations & Features

20. Dedham Parish Council
- 21.. Dedham Primary School
- 22-23 Local clubs
23. Dedham Parish Quiz
24. Friends of Dedham Church
25. Korban
26. Kingsleigh Residential
- 27-48 ADVERTISING

Can we help?

Sometimes things in life can just get too
much to cope with on your own...

Psalm 34:18: The Lord is close to the
broken-hearted and saves those who are
crushed in spirit. If you would like some
support or know of any one who would,
please contact: Ann Shaw ☎ 322 192

or Christine Mingay ☎ 230 723

If you have been bereaved or know of
anyone who has, please contact

Vee Druit ☎ 322 000

or Ruth Higginson ☎ 322 598

First Steps:

Want to get back involved with church
but don't know where to start?

Contact Liz and John Reed ☎ 323 770



Follow us on facebook Dedham and Ardleigh parishes

Book ahead: seats for
 Carol services, Christmas Eve and Christmas Day services
 need to be booked in advance via our website

Sunday, 6th December

9.30am	Rise N'Shine	Dedham *
11am	Morning Prayer	Ardleigh
5pm	Compline	Dedham *

Sunday, 13th December

8am	Holy Communion	Ardleigh
11am	Holy Communion	Dedham *



Friday, 18th December

6pm	Carol Service	Dedham
-----	---------------	--------

Saturday, 19th December

6pm	Carol Service	Dedham
6pm	Carol Service	Ardleigh

Sunday, 20th December

8am	Holy Communion	Ardleigh
11am	Carol Service	Dedham *
11am	Carol Service	Ardleigh
3pm	Sunday@3	via zoom
6pm	Drive in Carols	Ardleigh Car Boot site book your free tickets via www.popcornmovies.co.uk

Christmas Eve

3pm	Crib Service	Dedham
3pm	Crib Service	Ardleigh
11pm	Midnight Mass	Dedham *
11pm	Midnight Mass	Ardleigh

Christmas Day

8am	Holy Communion	Ardleigh
10am	Family Communion	Dedham *

Sunday, 27th December

11am	Benefice Service	Dedham
------	------------------	--------

**Service will be live streamed via our website*

 **YouTube** <https://www.youtube.com/channel/UC78SZfH5QRXMPy7DgfwYslg>

Morning and Evening Prayer online Monday to Friday at 9am and 5pm
Weekly Midweek Services 10.30am Morning Prayer, Dedham every Tuesday

Saturday Morning Prayer

9am, Saturday, 12th December (Ardleigh or Zoom)

Come and join us for prayer for our benefice and the wider community on the second Saturday of the month, Saturday, 9th January at Ardleigh Church.

Men's Breakfast

9am Saturday, 5th & 19th December (Vicarage or Zoom)

Every other week on Saturday, bring your own buttie!

Saturday, 16th & 30th January, 9am at The Vicarage.

Ardleigh Friendship Group every second & fourth Tuesday 10am

Please bring your own drink and food. (Ardleigh Church).

We look forward to seeing you!

Walk & Talk

Starting from Dedham Church 10am Thursday, 10th December

Starting from Dedham Church 10am Thursday, 14th January

for fellowship

JANUARY 2021

Sunday 3rd January

9.30am Rise N'Shine Dedham *

11am Morning Prayer Ardleigh

5pm Compline Dedham *

Sunday 10th January

8am Holy Communion Ardleigh

11am Holy Communion Dedham *

Sunday, 17th January

9.30am Matins Dedham *

11am Parish Eucharist Ardleigh

3pm Sunday at 3 online via zoom

Sunday, 24th January

8am Holy Communion Ardleigh

9.30am Morning Praise Dedham *

5pm ReVive@5 Dedham *

Sunday, 31st January

11am Benefice Service Dedham *

**Service will be live streamed via our website*



Come and join the **Journey to Christmas**
with our Nativity trail
from Sunday 13th December at Dedham Churchyard

 The Journey to Christmas

Come & meet the nativity characters



Drive in Carols
Sunday 20th December at 6pm
Ardleigh car boot site
Book your free tickets on line www.popcornmovies.co.uk



explore

life

faith

meaning

Alpha

The Alpha Course

Alpha near you starts on **Thursday 14th January 2021** in Dedham
Lunch time session start at 12.30pm & evening session starting at 7pm
*If you are interested in joining Alpha please contact the Parishes Office
01206 322136 or stmaryda@gmail.com*



We can't all be together, but we can all sing together

Sing Silent Night
at 8pm on 20th December

Join us at Drive in Carols or come out on your doorstep and
light a candle **more details www.singsilentnight.org**



We're delighted that as we come out of the national lockdown we are able to offer you a variety of Christmas services this month. We hope that these will bring you some *Comfort and Joy* as we can gather in a different way at the end of a very difficult year.

So many freedoms that we take for granted have been taken from us this year as our nation has struggled to cope with the pandemic. In some ways this has sharpened our appreciation of those very people and things that we have been separated from.

This month is known in the church calendar as Advent (from the Latin word *adventus* which means coming) is an annual time when Christians traditionally prepare for the feasting of Christmas celebrating the birth of Jesus, by deciding to set themselves aside from the normal things that they rely upon. So Advent can be a time to live more simply so that we appreciate the feasting of Christmas with even more gratitude.

This Advent we are exploring how our faith brings to us the unshakeable foundations of *Hope, Love, Peace and Joy*. Do join us as we explore them together Sunday by Sunday, you can watch our livestream services via our website, or join us in person.

Later this month you will be able to join in with a variety of services, *but this year you will need to book in for these services via our website*, as numbers are limited at each. We're offering our traditional Carols by Candlelight over the weekend of 18-20th December; a Drive in Carols at Ardleigh on 20th and Crib Services in the churchyards on Christmas Eve.

God Rest Ye Merry Gentlemen is going to feature as one of our carols this year – it's one of the oldest carols dating from the 16th Century. In it's chorus we find the words *Comfort and Joy* both of which we pray that you will know in some measure this Christmas-time.

**Take care,
Reverend Antony**

Why don't you come & join the next

Walk & Talk

meeting which is
10th December

on **Thursday**

This group is for anyone who finds themselves on their own through bereavement and is looking for friendship.

We meet outside Dedham church & depart at 10:00 am, we aim for a good walk for about an hour or just over.

On our return we had coffee outside from the mobile van but are hoping to go to the Arts Centre when COVID restrictions allow.

Please wear good walking boots etc.

FAIRTRADE

Do you ever wish you could make a difference to injustice in the world (even a little one)? Well you can, by supporting, purchasing and using Fairtrade products whenever you can. There are now many on the general market...



...and both our Churches in the Benefice are now fully accredited as being "Fairtrade" and continue to actively promote this (in 'normal' times) both by using fairly traded products from our hospitality units and the sale of food products, goodies and gifts every month, and on various other occasions.

To find out more about availability or just general information, please call 07595618779 or 07760124399.

DEDHAM & ARDLEIGH CHURCHES

*Invite you
to light up your homes for Christmas*

Due to Covid 19 there will be no Christmas Market or Christmas Tree Festival
HOWEVER... We can create our own Festival

By lighting up our houses OR putting our Christmas trees in the window
OR putting our Christmas trees outside OR lighting up our gardens
OR doing all of the above!!!

Take part in our competition for:-

THE BEST DECORATED HOUSE & THE BEST DECORATED TREE

A Christmas Hamper to be won for each category

If you wish to take part please fill in the enclosed entry form along with a donation to help towards costs

Voting for the best categories is up to you all

Walk round the village with your families between 12-19th December & make your choices

Your voting slips can be put in the red safe next to the entrance of Dedham Church or the box in Ardleigh Church

Maps of the houses Taking part & voting slips can be purchased for £1 from Dedham or Ardleigh Churches from 11th-19th December

Proceeds to Dedham & Ardleigh Churches



REMEMBER
*If your spirits are low,
set them aglow
with the light of life
at Christmas*

Dedham and Ardleigh Parishes

ENTRY FORM FOR LIGHTING UP CHRISTMAS

NAME.....

ADDRESS (please include postcode)

.....

EMAIL.....

TEL No.....

Signed.....

By signing this letter you are confirming that you are consenting to the PCC of St Mary's Church, Dedham / PCC of St Mary's Church, Ardleigh (please circle the church you have handed your form into) holding and processing your personal data for the following purpose: *Lighting Up Christmas Competition 2020*. If you tick the box below we can add you to our mailing list. You can unsubscribe at any time by contacting the Parishes Office on stmaryda@gmail.com / 01206 322136.

Please circle which category you are entering

Best decorated HOUSE

Best decorated TREE

The competition will run from 12-19 December

All entry forms and donations to be put into the box provided inside Dedham or Ardleigh Church

Please note last entries to be received by **Monday 7th December**

Maps and voting forms will be available in **both** Churches
(not in Kingsleigh Estate Agents as previously advertised)



Christmas Colouring Competition

Download the outline of a candle from the Parish Website, <https://www.dedham-and-ardleigh-parishes.org.uk> and go to Children and Family Resources. Look under Sunday At 3 Resources, or create your own outline of a candle on a sheet of A4 paper. Decorate the candle how ever you would like, crayons, paint, stick things on or write a prayer/poem. Once you are finished, send a picture of your candle to the Parish Email Address, office@dedham-and-ardleigh-parishes.org.uk Remember to add your name, age and school.
Many prizes. Good luck.

St Mary's Church - Ardleigh

Crafts
Bible
Stories
Snacks

Sunday at 3

All
welcome

each month on 3rd sunday

www.dedham-and-ardleigh-parishes.org.uk

A Christingle "Scavenger Hunt"
Sunday at 3 is on line...

join us for all our usual fun but via zoom.

Our next live meeting is on **Sunday 20th December at 3pm.**

Do join us from your homes for a Christingle story with a difference.

For log in details, please see the Church Chimes.



From the register:

Burials:

Martin 'Jeremy' Rogerson,
4th Nov 2020

Interment of Ashes:

Brian Ernest Shambrook,
11th Nov 2020

Funeral service only:

Tania Anna Lyle,
18th Nov 2020

Baptism: Arthur Moore

25th October 2020

No Way over the bridge...

The bridge at Dedham carrying the B1029 over the River Stour is currently undergoing some major maintenance works. The bridge was constructed in 1974 and incorporates the abutments of the narrower bridge that it replaced. The bridge deck consists of six main steel and concrete beams supporting a reinforced concrete deck slab. Each of the main beams is supported on steel bearings that are fixed to the abutments. In addition to transferring the loads from the bridge deck into the supporting abutments, the bearings accommodate rotations and horizontal loads and movements from the bridge deck. Bridge bearings are replaceable elements that have a service-life that is generally shorter than that of the bridge as a whole.

The bearings at the south-end of the bridge have reached the end of their service-life and need to be replaced. The works that are currently underway are for the replacement of the bearings at the south-end of the bridge, together with maintenance works to the bearings at the north-end. Opportunity is also being taken to undertake other maintenance works to the bridge whilst we have ready access, such as parapet painting and concrete repairs.

To enable the bearings to be replaced the bridge deck needs to be jacked-up off the abutments to take the weight off the bearings. This involves positioning significant jacking frames between bearings and installation of hydraulic jacks that can be used to lift the deck. Once the deck has been raised, the tops of the reinforced concrete abutments then have to be carefully demolished below the existing bearings to enable the bolts that attach the bearings to the abutments to be removed. The old bearings are then removed, new bearings installed, and the abutments reinstated, before lowering the bridge down onto the new bearings, and then removing the jacks and lifting frames.



Lifting of the bridge deck necessitates other works such as repositioning/isolating the utilities services that cross the bridge, and replacement of the bridge joints and waterproofing. The works also require the construction of significant temporary scaffolding/working platforms to gain access the bearings.

*Colin Godfrey BSc (Hons) CEng MICE
Structures Asset Manager, Suffolk Highways*



Temporary scaffolding installed adjacent to South abutment to provide access to bearings.

Corroded existing bearing supporting bridge beam and cracked concrete abutment.



One of the temporary jacking frames installed on the South abutment ready to be jacked-up to lift the bridge deck off the bearings.



Three Bridges

By severing our closest way into Suffolk the temporary closure of Mill Lane for bridge repairs reminds us how important the river crossing must have been in establishing the position of the original Anglo-Saxon settlement at Dedham. This was the lowest point where the Stour could normally be crossed; the ford at Flatford could only be used at dry times or seasons. Dedham's ford was downstream from the present bridge near the first bend of the river. It is thought that a track to it may have led directly from the corner of Brook Street behind Dedham Hall and through what is now the site of the Sewage Treatment Works. In the medieval period, when the first bridge was built in a position near the present mill, Mill Lane was realigned to approach it. We do not know the date but it is likely to have been earlier than 1548, when some of the proceeds from the sale of church plate were used to pay for building a bridge. This may have been only a footbridge but the prosperous wool trade in the fifteenth century would already have ensured the need for convenient transport of merchandise.

The earliest representations of the bridge at Dedham Mill show a wooden structure supported by two pairs of sturdy posts standing in the river and abutments at either end. Flatford bridge which was built in this way provides an example of traditional bridge construction all along the Stour. After it

had been renewed in the early twentieth century using thirty tons of English oak there was a proposal in 1927 to replace it with an iron bridge. A fundraising campaign for a traditional wooden bridge was finally successful and resulted in 1951 in the construction of the present replica, made in Burmese wood to the original design.

The freight business introduced by the Stour Navigation Company, created in 1705, dominated the river during the eighteenth and nineteenth centuries and the traffic it generated meant that the central openings of earlier bridges had to be widened to accommodate the breadth of the barges. Moreover to allow for heavier weights being transported over the bridges, it was necessary to add a central vertical support between the existing two on either side. Stress on the timbers meant that repairs were constantly needed and bridges often had to be rebuilt. The Navigation was responsible for repairs but by the end of the nineteenth century it was failing and on the verge of bankruptcy; so the local authorities had to take over. The ever-increasing load of heavier traffic over Dedham bridge meant that the traditional wooden structure was first replaced by an iron bridge in 1900 and then rebuilt in concrete in 1974. Nearly half a century later the concrete bridge itself requires major maintenance. Suffolk County Council is currently carrying out this essential work, which includes replacing the bearings at the south end and installation of new movement joints.



Dedham bridge in 1898, showing its central opening with three supporting posts on either side. On the right is the decking carrying the tow path across the tributary.



Flatford bridge, a replica of the original bridge constructed in Burmese wood in 1951, illustrating the traditional construction of bridges along the Stour



Dedham's iron bridge installed in 1900.

A bridge at Stratford St Mary was first recorded in 1441. This was on the edge of Dedham parish at the bottom of Gun Hill and lay on or near the road which had been the main route from Colchester to Ipswich since Roman times. It was clearly important to our village because in the early sixteenth century wealthy Dedham merchants Thomas Webb and his son both bequeathed money for repairs to this "great bridge" and John Webb also left money to repair the highway between Stratford bridge and Dedham church. St John's chapel, recorded in 1523, stood just south of the bridge until it was demolished in 1826. The highway became a turnpike road in 1725 and the toll house on the Dedham side survived until 1926. A watercolour by John Constable shows it in 1800 with a gate the full width of the entrance to the bridge. A cast-iron sign on display by the toll house, now preserved in the porch of Langham Church, implored drivers to spare their horses on dangerously steep Gun Hill:

THE DUMB ANIMALS HUMBLE PETITION
 REST, DRIVERS REST,
 ON THIS STEEP HILL,
 DUMB BEASTS, PRAY USE,
 WITH ALL GOOD WILL
 GOAD NOT, SCOURGE NOT,
 WITH THONGED WHIPS
 LET NOT, ONE CURSE,
 ESCAPE YOUR LIPS.
 "GOD SEES AND HEARS".

Stratford bridge has been rebuilt many times. A wooden bridge was threatened by floods in 1614 and repairs to it, or perhaps its successor, were carried out

in the 1660s. In the late eighteenth century a new bridge was built to the design of the Essex County Surveyor John Johnson (1732-1814) with Essex and Suffolk County Councils jointly liable for maintenance costs. In less than ten years it was swept away and in 1795 Johnson built another wooden bridge relocated to the east of the earlier crossing, this time with brick abutments at either end. Ninety years later this was replaced by an iron bridge, which in turn was superseded by the present concrete version of 1928, described on a contemporary postcard as the County Bridge because it links Essex with Suffolk.

Lying between Dedham and Flatford, Fen Bridge provides a direct route between Dedham and East Bergholt. In the late eighteenth century the painter John Constable went that way on his daily walk from his home in East Bergholt when he was a pupil at the Grammar School in Dedham. Built on the site of an earlier ford, the bridge had fallen into a dilapidated state by the time it finally collapsed in the late 1930s. It was demolished in the 1940s and not replaced until 1985 when the Suffolk County Council built a new single-span footbridge, constructed mainly off-site and installed with some difficulty. The plan was for a Chinook helicopter to lift the main section into position in February but unfortunately on the day the downdraught from the helicopter's rotors was too strong to allow it to be accurately positioned. The engineers had to wait for the water meadows to dry out in the spring before a mobile crane

could be brought in to complete the job the following summer. The total cost was £1400.

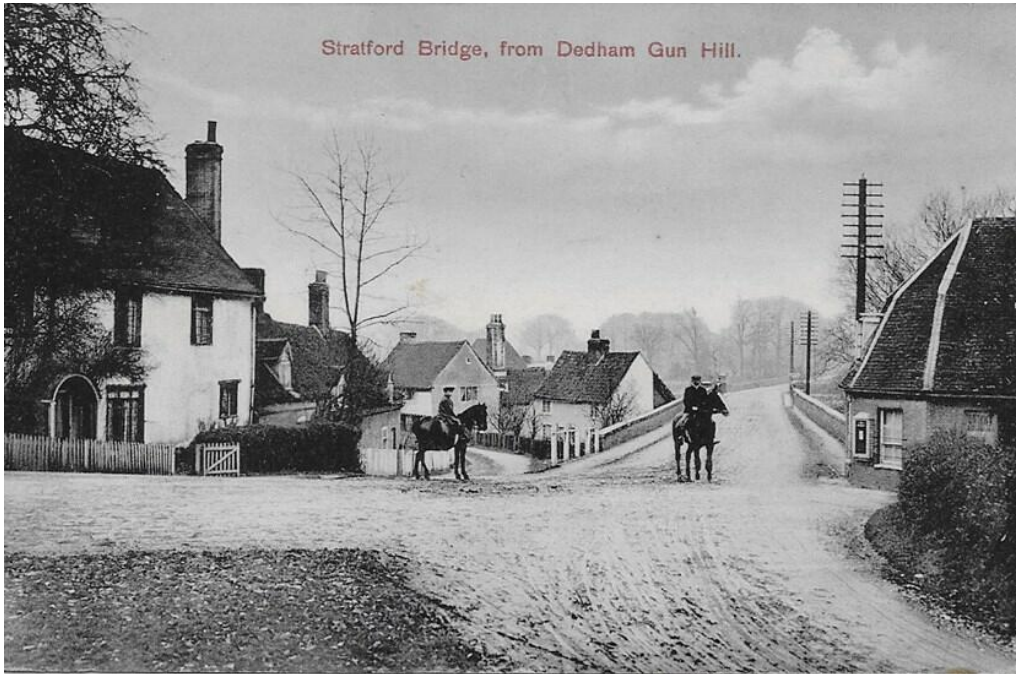
Fen Bridge carries both the Stour Valley Path and St Edmund's Way across the river. Sadly structural problems mean

that it is currently closed for an indefinite period, suspending one of Dedham's favourite round walks. It is sorely missed.

© **Lucy Archer**

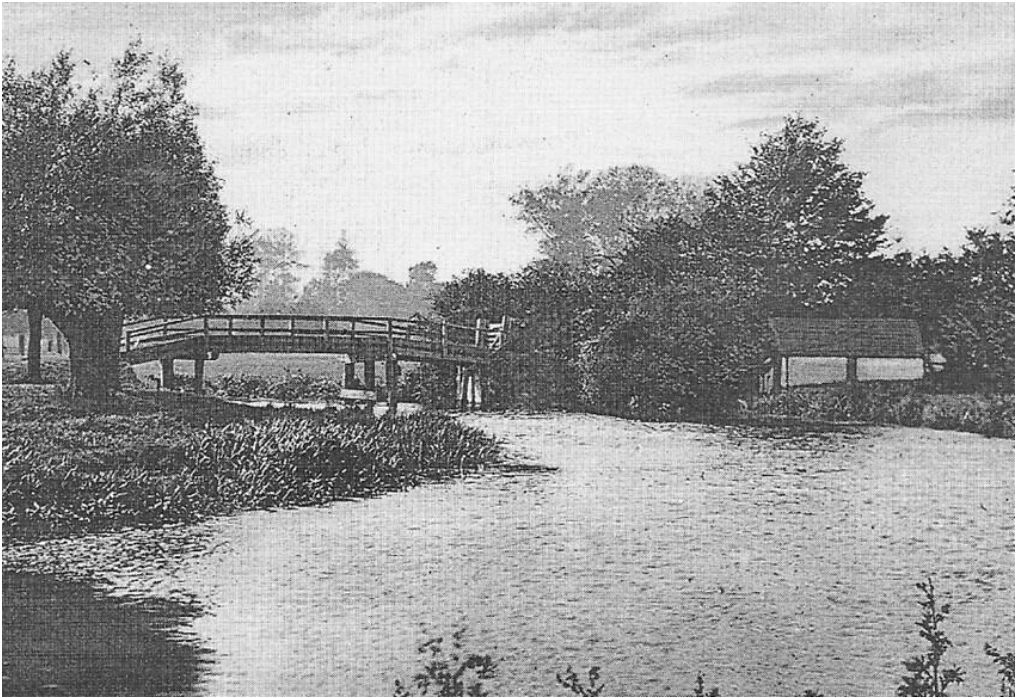


Ted Eley's photograph of barges parked up beside Dedham bridge (one of its rivets can be seen bottom left) in the early twentieth century. After they were introduced in 1705 bridges had to be altered to provide a wider central opening.



*A postcard showing Stratford bridge before 1926, when the toll house (on the right) was demolished.
A postcard showing Stratford St Mary's concrete bridge at the bottom of Gun Hill, which was built in 1928*





*Fen Bridge in the early twentieth century.
Lifting the new Fen Bridge into place, February 1985*



Dedham Parish Council

Hedges and ditches

The Parish Council would once again like to thank all landowners who regularly cut their hedges along our roadsides and attend to verges and ditches. It makes such a difference for motorists and pedestrians. Thank you! If there are any hedges and ditches which are causing a problem for residents then please get in touch with the Clerk.

Elections

Residents may remember that this year's local elections, which were scheduled for May, were delayed by twelve months as part of the government response to Covid-19. This meant that the term of office of the current members of DPC was extended for one year. The elections will be held in May 2021 and anyone interested in standing for election to the Parish Office is encouraged to get in touch with either the Clerk or any of the Councillors (contact details may be found on our website).

Village sweepers and cleaners!

Thank you very much to those residents who quietly and unobtrusively sweep leaves and clean benches etc in the village. Your efforts are noticed and very much appreciated.

We still have a vacancy for an official 'litter picker' if anyone is interested in applying.

Playground

It's lovely to see so many young people and their parents enjoying the playground on fine days. Please, please make sure you follow the rules for safe play which are attached to the fencing.

Road safety

Now that the dark evenings are with us once again it makes sense to wear light or high visibility clothing when out and about at dusk and in the dark.

It can be very difficult for motorists to see dog walkers, runners, cyclists in the dark on our mostly unlit roads and it's very easy to set out for a walk in the daylight inadequately prepared for dusk! Please make sure that you can be seen by wearing bright clothing and by using a torch or high intensity cycle lamp.

Remote meetings

We will continue to meet remotely using 'Zoom' for the foreseeable future. Meetings are normally held at 7pm on the first Monday of each month. Full details are on our website and we welcome any member of the public who would like to attend.

Nicola Baker

**www.dedhamparishcouncil.co.uk
Parish Clerk, Emma Cansdale,
01255 871483
clerk@dedhamparishcouncil.co.uk**

Turkey
Voucher

Smyths
Voucher

Beauty Gift voucher

Football
Coaching Session

Buy a Gift
Voucher

Dinner for 4

A Luxury Hamper

A Magnum of Wine

Christmas Raffle

Prize draw Friday 11th December 2020

All Proceeds to Dedham Primary School



**Tickets are available to collect at the Co-op
or the Pharmacy High Street, Dedham**

Due to current restrictions, please complete the tickets at home and return the stubs and money in a sealed envelope to the school post box situated to the left of reception.

Paintballing
Voucher

Handmade Christmas
Decs

Soft
Toys

Book
Tokens

Tennis
Coaching

Amazon
Gift Card

Reflexology Voucher

Sincere thanks to all who donated, without your support this would not be possible

Kingsleigh Residential, The Lion Brasserie, East Bergholt, Frontier Fine Wines, Oakhouse Beauty, Fairey Associates, Kelly Bronze Turkeys, Xmas4Schools, Matthew Watson, Marley Andrews Soccer School and the parents/carers of Dedham Primary School.

Stour Valley U3A

News: A number of our activity groups will resume when Government guidelines allow. Groups, such as philosophy, book club and languages communicate via Zoom. The garden visits group has a number of visits planned, including a holiday at Harrogate.

Membership: We are always open to new members. Our fee for 2020/21 is just £8. To find out more, visit our website to see how we work and get the latest updates:

stourvalleyu3a.org.uk or contact

Graham Manuel (chair)

gandamanuel@gmail.com or Sue Basted (secretary) susanbasted10@gmail.com

About us: Stour Valley U3A is one of more than 1,000 U3A groups in the UK. We have just over 400 members based in the Essex/Suffolk border encompassing areas including Manningtree, Dedham, East Bergholt and Shotley. We work with neighbouring branches in Hadleigh, Harwich and Colchester which provides a wider range of social and learning opportunities. The Third Age Trust looks after all U3As nationally bringing together people in their “third age” to develop their interests and continue learning in a friendly and informal environment. Third age is a time after you have finished working full-time and have time to pursue interests or just try something new.

Christmas Greetings from England’s only surviving Methodist Silver Band BOXTED METHODIST SILVER BAND

What a year for the Band and for all of us. We were just preparing for a fundraising concert at Dedham Church when the pandemic impacted on everyone.

Covid-19 restrictions mean that this year Boxted Methodist Silver Band (at the time of writing, according to national lockdown restrictions but hopefully they may be lifted) will not be able to undertake all of its hectic December schedule of performances ahead of Christmas, which last year totalled nearly 20 – with the Band bringing the spirit and joy of Christmas to an estimated 4,500 people at supermarkets in Colchester, outdoors at Nayland and Long Melford, and of course here in Boxted at our annual concert at Boxted Village Hall.....and touring different residential areas in the village.

However, the Band are committed to do whatever we can do to reach out with the Christmas spirit and music as we have for more than 120 years.

Boxted Methodist Silver Band is the only surviving Methodist band in England. It is unique, writes Sir Bob Russell, Chairman of the Band since autumn 2019.

The Band was formed in 1898, and until this year (prior to Covid-19) it was based in the School Room next to Boxted Methodist Church – which closed the previous year, in July 2019.

It had been the Band's hope to remain in the School Room, which we persuaded Colchester Borough Council (with support from Boxted Parish Council) to register as an "asset of community value". This gave a legal protection for the Band to have six months to raise £145,000 to buy the School Room. Alas, the shut-down caused by Covid-19 meant that our fundraising efforts were in vain. To those that did donate, thank you. If, as we did not purchase that hall, you wish for your donation to be returned please get in touch. The Band really appreciates these donations and support as it has been a very difficult year for the Band.

Colchester Methodist Circuit has shut four Methodist churches in villages around Colchester, but they cannot shut England's only surviving Methodist Band – and the Band will stay in Boxted, loyal to its Boxted roots and keeping the word Methodist in its unique title. The School Room has now been sold by the Methodist Circuit. However, Boxted Methodist Silver Band plays on.....

Remaining in the village is key for the Band and it gives up great joy to

announce that we have a new home! The owners of Fillpots Garden Centre have welcomed us and rehearsals will commence there shortly. This is truly wonderful for the Band, and for the village, and we thank Fillpots owner Richard for his kindness and community spirit. More about the Band and Fillpots events in the New Year.

Once the Covid-19 restrictions are lifted the Band will resume its regular programme of performing not just in Boxted but also the wider area of Colchester and across the border into Suffolk as it has done for decades.

Last year the Band performed at Windsor Castle, in Her Majesty the Queen's private chapel. Similar prestigious locations are planned for the future – Westminster Central Hall and a concert at Dedham church with the Band's 125th anniversary in 2023 very much something to look forward to.

Boxted residents have given great support to the Band in the past, and the Band will continue to support the village in whatever way it can through the Christmas season and beyond.

DEDHAM VILLAGE QUIZ 2021

"It will sadly be no surprise for you to hear that the 2021 Dedham Village Quiz, scheduled for Saturday 16th January, will not be taking place. The organisers do plan to arrange a new date as soon as it is clear that events of this nature (120 + people in one room!!) can take place once again and further information will be published in the Parish Magazine and on the Dedham Vale Voice Facebook page hopefully before too long.

David & Vee Druitt & Jill Strangward"



Friends of Dedham Church

Many of you will be familiar with the work of the Friends of Dedham Church, formed in 2004 to help with repair and to maintain the church and churchyard, and assist other organisations in the village such as the primary school.

The Friends are a registered charity and independent of the church. The church building and churchyard are enjoyed both by residents and visitors. A large number of our Trustees and members are not churchgoers but want to support the fabric of this important part of our village.

To date the Friends have given well over £180,000 and have supported, amongst other things, the restoration of the steps in the church tower and the viewing platform, restoration of the clerestory windows and redecoration of the nave, churchyard survey, renovation of the churchyard paths, various projects at the primary school, CCTV

for the Duchy Barn, and cleaning of the war memorial. As you may have seen from last month's magazine, the latest project was the installation of two new toilets in the church, and a hospitality unit. The Friends have promised up to a maximum of £10,000 towards the repair of the old guttering around the church, which is in bad condition. We have also committed to help with the provision of streaming equipment at the school. Important projects for the future include the restoration of the stained glass windows in the church, many of which are in a bad state of repair.

I have been a Trustee since the Friends were formed in 2004 and recently became Chairman following the retirement as a Trustee of Peter Wilson. In common with many charities reliant on fundraising, 2020 has been a difficult year for the Friends. All our main fundraising activities and our social events, including the very popular annual Dedham Ball, were cancelled due to Covid 19. However we look forward to 2021 and hope that to a large extent normal life can be resumed in the Spring.

We would love to have new members. If you are interested in supporting this important part of our village and joining the Friends do have a look at our website at friendsofdedhamchurch.essexonline.net where you can learn more about it and download an application form.

Jane Jewell



Christmas list

ways to help support us this year



£5 cards

£10 meal

£15 gift



Colchester Korban Project is a Christian charity providing supported housing for 16–25 year olds who are homeless and find themselves in crisis. We offer young people a home, support & guidance as they prepare themselves for independence. You can support our work by visiting: www.korban.org.uk/online-donations

£5

Our very own Korban Christmas cards now on sale, just £5 for a pack of 10 cards. Go on line & put "Christmas cards" in the comments box (include your address so we can send them)

Please visit www.korban.org.uk/online-donations

£10

For just £10, you can sponsor the cost of one of our residents to attend the Korban Christmas meal. Its here that they will receive their gift from Korban, hear a reflection on the message of Christmas & enjoy a feast laid on for them by staff. We know from what they have told us that the meal is one of the stand out moments of the Korban calendar & you can help make it happen. Go on line & put "Christmas meal" in the comments box

Please visit www.korban.org.uk/online-donations

£15

Each year all our Korban residents receive a small £15 gift token as our way of showing them they aren't forgotten. Its not much but buying several of them mounts up for a small charity like us so if you can sponsor a gift that would be a massive help. Your generosity goes a long way in helping them to feel that they are cared for. Go on line & put "Christmas gift" in the comments box

Please visit www.korban.org.uk/online-donations

Thank you so much for your kindness this Christmas, any extra money raised will be used to continue supporting the young people throughout the year, thank you



Kingsleigh
Property Consultants

**High Street, Dedham,
CO7 6DE**



Westmead, Dedham Road, Ardleigh, CO7 7QB

Situated in a superior position amidst the glory of the north Essex countryside, this attractive cottage benefits from spacious family living accommodation and glorious gardens.

EPC Rating: D

Guide Price £800,000



Monica House, Colchester Rd, Ardleigh, CO7 7PA

Fabulous four-bedroomed, double-fronted house situated in Ardleigh which benefits from a generous plot of approximately 0.3 of an acre (subject to survey).

EPC Rating: E

Guide Price £750,000



Peter and the Kingsleigh Team would like to thank our wonderful neighbours for their support during this challenging year.

Local businesses rely on the support of the community and could not survive without it.

As a result of the feedback from our clients, we have become an award-winning agent in 2020, achieving 'Best in Essex', in a prestigious national event.

Wishing you all a happy and healthy 2021.



**SALES &
LETTINGS**



sales@kingsleighresidential.co.uk
lettings@kingsleighresidential.co.uk
www.kingsleighresidential.co.uk

BAILAND

CONSTRUCTION LIMITED

EXQUISITE ATTENTION TO DETAIL

TOAD HALL
THE HEATH, DEDHAM
ESSEX, CO7 6BT
01206 323230

WWW.BAILANDCONSTRUCTIONLIMITED.CO.UK
ENQUIRIES@BAILANDLTD.CO.UK



Bland Landscapes Ltd

Our services include:

01206 230882
www.blandlandscapes.co.uk

Ivydene, Frating Road
Colchester, Essex, CO7 7SY

Treework Specialists	All types Fencing Inc.
Felling	Equestrian Fencing
Pruning	Driveways
Reducing	Patios
Reshaping	Turfing
Stump grinding	Planting
Seasoned Logs	Grass Cutting

MARK FAGE ARCHITECT

MODERN AND TRADITIONAL DESIGN
RESIDENTIAL & COMMERCIAL PROJECTS
LOCAL KNOWLEDGE AND SUCCESS

Tel 07976 655387 **www.markfage.com**
e mail **mark_fage@btinternet.com**

Right at Home Colchester & District

Quality Care & Support, from hourly visits to Live-In care.



Our services include:

- Companionship
- Transportation and errands
- Meal preparation
- Light housekeeping
- Help with washing
- Personal care
- Medication support
- Post-operative support
- Live-In care
- Specialist Dementia care
- Hospital to home

and much more...

01206 932792

Contact us today on:

- ☎ 01206 932792
- ✉ colchester@rightathomeuk.com
- 🌐 www.rightathomeuk.co.uk/colchester
- 📘 www.facebook.com/rightathomecolchesteranddistrict/



Good



Please mention **Dedham Parish Magazine** when you contact any of these Advertisers



For all your lock requirements, please call your local Locksmith, based in Brantham

07887 686839

Email: trevor@towneslocksmiths.co.uk

Helen Sims Flowers

BEAUTIFUL FLOWERS FOR ALL OCCASIONS

T: 07899 061840
 E: helensimsflowers@btinternet.com
www.helensimsflowers.co.uk

<p>Pedicare Foot Clinic</p>	<p>Also at Pedicare:</p> <p>Felicity Watts Reflexology</p> <p>in need of relaxation?</p>
<p>Tel: 01206 322674 Mob: 07732 039726 Email: nicola.pedicare@gmail.com Web: www.pedicarefootclinic.co.uk</p>	<p>Please contact Felicity for an informal chat about the benefits of Reflexology and how it can help you.</p> <p>T: 07432 098079 E: fjwattsreflexology@gmail.com</p>
<p>Dedicated to the care of your feet</p>	<p>Relax • Restore • Revive</p>
<p>1 Threadneedle (Main) Street Dedham, Colchester CO7 6HH</p>	

<p>Osteopathy and Sports Therapy/Massage Clinic in the heart of Dedham providing treatment for:</p> <ul style="list-style-type: none"> • Back pain & sciatica • Arthritis pain & stiffness • Neck & shoulder pain • Trapped nerves • Tennis/Golfer's elbow • Tendinopathy • All joint strains • Muscle/ligament strains 	<p><i>Dedicated to getting you better.</i></p> <p>DEDHAM OSTEOPATHY</p> <p>Luke Jackman Bsc Hons Ost Registered Osteopath</p> <p>Tel: 01206 323 239 / 07974 144593 www.dedhamosteopathy.co.uk</p> <p>One hour initial appointment • Free on-site parking • Open weekdays, evening & weekends</p>
---	--

P.J. SAMPSON BUILDERS

COMPLETE BUILDING SERVICE
30 Years' Experience

Tel: 01206 230619
66 Tile Barn Lane Lawford

Brick work Specialist
Painting & Decorating
Plastering and Carpentry
Plumbing & Electrics
Roofing

All Property Maintenance



Call for a free quotation

Office: 01255 436410

Mobile: 07939 554197

Website: www.spenceelec.co.uk

24 Hour Emergency Call Out

All Electrical Work Undertaken
Domestic & Commercial

ECA / NIC EIC Approved Electrical Contractor
Fully Insured. New Installation.
Rewires and Upgrades.
Additional Sockets and Lighting.
Garden / Garage Power and Lighting.
Full Electrical Testing and Inspection Service.
Domestic Electrical Fault Finding and Repair.

Prompt Reliable Service




LAWFORD HOUSE POOL
MOBILITY | WELLBEING | FITNESS

**Come and enjoy a swim at
Lawford House Pool.**

Lawford House Pool, Bromley Road
Lawford CO11 2JD

To book please go to our website
www.lawfordhousepool.co.uk
or call us on 07958 551161.

the
treatment
rooms

AT MAISON TALBOOTH

Spa packages | Massages
Facials | St. Tropez tanning

Open all day, every day.
Call to book 01206 322367 or visit
www.milsomhotels.com/spa



THE **DEBBIEMILLARSCHOOL** OF DANCE

CLASSICAL BALLET • TAP • MODERN • THEATRE • DISCO

Dance classes for ALL ages & abilities
For fun, recreation, progressive ISTD examinations

**Toddlers
Pre-school
Children
Teens
Adults**

**Ballet & Tap
Modern
Jazz
Disco/Street
Musical theatre**



Tel: 01206 230806 Email: debbie@debbiemillar.co.uk
www.debbiemillarschoolofdance.co.uk

JP WILSON PLUMBING AND HEATING

Gas Engineer
Bathroom Installation
Boiler Installation
Faults & Servicing
Landlord Safety Certificates
Unvented Systems
Fully Insured

TEL: 01206 322141
MOBILE: 07445 270703
EMAIL: jon@jpwplumbing.co.uk
www.jpwilsonplumbingandheating.co.uk

Chartleigh
East Lane
Dedham
Essex CO7 6BE





**Dedham
Church of England
Primary School**

Lifelong love of learning

A warm welcome awaits you at Dedham Primary School. Our team of dedicated teaching and support staff, school governors, parents and community work together for the benefit of all our children.

We value an inclusive culture of learning where through a broad range of opportunities each and every child is supported and challenged to reach their full potential.

We look forward to welcoming you to our school.

Headteacher: Mr David Larner
www.dedham.essex.sch.uk
 01206 322242
 @PrimaryDedham

The new
Cancer Care Navigator Team
 are here to help people get the right help & support with all non-medical needs. They are trained staff working along side **Ipswich & Colchester hospital** & with the local GP surgeries to support newly diagnosed patients, their families & carers with practical, financial & emotional concerns they might have.

You can self-refer by calling Colchester on 01206 487288 or Ipswich on 01473 702125 or you can email **cancercarenavigators@esneft.nhs.uk**



preschool

30 funded hours for 3 & 4 year olds
 15 funded hours for eligible 2 year olds
 8.45am to 3.00pm (term time only)

JOIN US FROM 2 YEARS OLD

**OFSTED
 OUTSTANDING**

VILLAGE LOCATION WITH A WONDERFUL GARDEN AND OUTSIDE CLASSROOM.



01206 322466
admin@abcpreschoolstratford.co.uk
www.abcpreschoolstratford.co.uk

CHARITY NO: 1159203

Open to All
 regardless of
 catchment area



From age
 2 years...



*** Longer Opening Hours Now Available ***



www.ardleighpreschool.co.uk

Tel: 07517 430114



Ardleigh Village Hall, Station Road, Ardleigh, Essex, CO7 7RS

LANGHAM PRE-SCHOOL

VILLAGE LOCATION JUST 5 MINUTE DRIVE FROM:
HIGHWOODS, MYLAND, BOXTED, DEDHAM & GREAT HORKESLEY

2yrs +

**From Sept 2017: Up to 30
free funded hours available**

Come and explore...

Langham Community Centre
School Road
Langham
CO4 5PA

Company no. 07127779
Charity Commission no. 1135120



For more info: 07930 963638
www.langhampreschool.co.uk



All our services are free to those in need, but our costs include IT equipment, software, internet services and literacy support.

www.beaconhouseministries.org.uk
Bank account: 23-05-80, 24181162

As more support services become digital, it is often assumed that everyone has access to a computer. But some do not.

Please support Beacon House, Colchester, so that we can help homeless people to access jobs, benefits and housing, or just keep in touch with families and friends.



Join us for tennis at...

Dedham LTC

Community club set in the heart of Dedham

Friendly club sessions offering tennis for all

Junior & adult coaching sessions available

Fantastic membership options all year round

The Drift, Dedham, Colchester,
Essex. CO7 6AH.

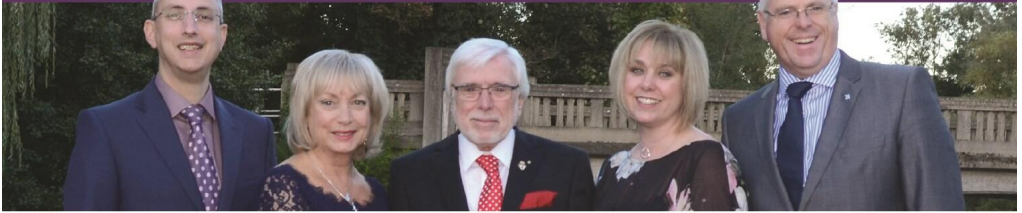
www.clubspark.lta.org.uk/dedhamlta
email: dedham-tennis-committee@googlegroups.com

Wendy's Curtains

Professionally made to measure curtains, roman blinds and soft furnishings, with a wide range of fabric samples.

☎ 01206 395996
☎ 07966 718 414
✉ info@wendyscurtains.com
🌐 www.wendyscurtains.com

HUNNABALL
Family Funeral Services



Here **whenever** you need us

Funerals | Memorials | Pre-paid Funeral Plans

Hunnaball of Colchester
York House, 41 Mersea Road,
Colchester CO2 7QT
01206 760049

Geo. Paskell of Manningtree
19a High Street,
Manningtree, CO11 1AG
01206 396709

www.hunnaball.co.uk

S. J. Smith
PLUMBING AND HEATING
ENGINEERS

**From an extra radiator
To a full heating system**



- * Boiler changes
- * Bathroom suites
- * *Aqualisa, New Team* & other showers
- * Electric showers
- * All heating and plumbing repairs



FREE ESTIMATES
CORGI REGISTERED

22 Bullock Wood Close

COLCHESTER
843 493

Leisure Hire



Marquee and Equipment Hire

- Marquees erected on most surfaces •
- Awnings • Walkways •
- Extensions to Buildings • Linings •
- Lighting • Furniture •
- Flooring & Staging • Heating •

Summer or Winter
Weddings Anniversaries Corporate

Brochure upon request

(01206) 242 196

leisurehire@gmail.com



Steve Hutley (BCCSDip.CanBhvPrac)
DOG BEHAVIOURIST
 Website: www.stevhutleydogrehab.co.uk
 Facebook: 'Rehabilitation and Training'
 Email: steviehut@yahoo.co.uk

DOES YOUR DOG POSSESS THE FOLLOWING BEHAVIOURAL PROBLEMS?

Dog on dog aggression?; People aggression?;
 Lead Pulling?; Constant barking?; Fears or phobias?;
 Jumping Up?; Separation Anxiety?; Resource Guarding?

If you answered YES to ANY of these questions, then please don't hesitate!

Give me a call on: 07859879559.

Essex & suffolk PEST SOLUTIONS



Your local pest control experts for home & business

- Free advice, fast response
- Highly accredited (NPTA)
- Fully qualified & insured
- Discreet — unmarked vehicles

Tel: 01473 328092 (Holbrook)

Email: info@eandspestsolutions.co.uk

PENROSE VETERINARY GROUP LTD

Veterinary Surgeons

**Peelers End
 Upper Street
 Stratford St Mary
 CO7 6LW
 (01206) 323414**

**70 Brinkley Lane
 Highwoods
 Colchester
 CO4 9XE
 01206 842608**

Appointments daily, including weekends and late nights
24 hour veterinary care
www.penrosevets.co.uk

Diana M Cleaning Home and Office Cleaning



07925624123
dianamarinova61@yahoo.co.uk

Julie Wensak
 Find us on Facebook




The House & Hound Sitter
 Based in the heart of Constable Country

A caring, professional service looking after your pets in their own home. Including dog walking, cat feeding etc
 Live in or live out, with the peace of mind that your home is in safe hands.

For further details and to discuss your requirements
 Contact me on 07805 927831
julie@houseandhound.co.uk

thehouseandhoundsitter.co.uk



PLUMBING AND HEATING LTD

Established 1988



NATURAL GAS • LPG • OIL • RENEWABLES

- FULL INSTALLATIONS
- BREAKDOWN
- SERVICING
- SYSTEM MAINTENANCE
- SYSTEM DESIGN

FOR ENQUIRIES CALL
 IAN - 07885228646
 OR
 JOHN - 07500956984
 OR VISIT US AT
www.icpplumbingandheating.com

Richardson&..... Rothwell



184271

Plumbing and Heating Limited
Unit 1, Manningtree Road, Dedham

Make us your first call for plumbing & heating requirements.

We are your reliable local plumbers. We undertake all plumbing works from heating systems and bathroom suites to solar heating, air source & ground source heat pumps.

We offer a free quotation service so please call us to find out more details.

Tel: 01206 323732 Fax: 01206 323735 email: steve@richardsonandrothwell.co.uk

Worcester-Bosch • Baxi-Potterton • Chaffateux • Main
24hr CALL OUT




Jackson
Plumbing & Heating
 01206 322063
 mobile: 07834 612009
 01473 214215



www.jacksonplumbing.co.uk



GRANTS AVAILABLE OAP DISCOUNTS

Glowworm • Vaillant • Ariston • Ferroli • Biasi • Sime • Ideal

LIDDLEBUILD BRICKWORK

N.V.Q / City & Guild Qualified

All aspects undertaken:
New Builds, Extensions, Garden Walls
Repair, Block Paving, Slab Work

Call for a free quote today

Tel: 07881 095818

Email: liddleiain@hotmail.com

**A.Slocombe
General Builder**

Hard Landscaping,
Roofing and Property Maintenance

Brickwork, Blockpaving Drives, Carpentry
No job too small, for free friendly advice
and estimates phone

01206 322 884 / 07786 871 364



Personal Training

No Joining Fee

Free Fitness Consultation

Contact Mark

07769703131

mark@fitfaff.com



Registered Member 47972
MBACP

**PSYCHODYNAMIC COUNSELLING &
PSYCHOTHERAPY**

Patrick Lyttle, MSc PGDip (Oxon)

Tel: 07887 982837
Email: patricklyttle@gmail.com
www.psychologytoday>patricklyttle



THE
DEDHAM VALE
DELI

WWW.DEDHAMVALEDELI.CO.UK

Your local online deli service bringing curated artisanal products direct to your door.

- Hand Crafted Cheese
- Olives & Antipasti
- Oils & Vinegars
- Meze & Tapas
- Nibbles with Drinks
- Charcuterie & Fish
- Bakery, Crackers & Accompaniments
- Healthy Snacks
- Ethically sourced Teas & Coffees
- Preserves, Jams & Honey
- Christmas Gift Hampers & Holiday Cottage Welcome Boxes

ORDER YOUR DELI DELIGHTS, DELIVERED TO YOUR DOOR:
WWW.DEDHAMVALEDELI.CO.UK

ORWELL ELECTRICAL LIMITED

95 School Lane, Stratford St. Mary
Suffolk, CO7 6LZ

Tel: **01206 322969**

Mob: **07534424493**

E-Mail: info@orwellelectrical.co.uk

www.orwellelectrical.co.uk



Call us for a free quotation

- Electrical Installations
- Electrical Testing
- Lighting Design
- Fire Detection Services
- 24-Hour Call out
- Response Maintenance

Victoria Baker PILATES

Personally designed courses to improve posture, joint alignment, movement and strength.
Group and Individual sessions in a private, comfortable studio.

The Assembly Rooms
High Street, Dedham
Colchester CO7 6HJ



office 01206 32244
mobile 07887 987280
www.victoriabakerpilates.com



All aspects of building work e.g. extensions, removal of walls etc, plastering, tiling, electrical & plumbing are undertaken as we project manage your kitchen from start to finish.

HUNTERS BROOK

The Kitchen & Bedroom Specialist

01279 442432

sales@huntersbrook.co.uk

"Designers & fitters covering Essex & Suffolk"

Daniel Williams

ELECTRICIAN



- Local Service
- Fuse Boards
- Rewires
- New Builds & Extensions
- Sockets & Lighting
- Testing & Fault Finding
- Kitchens & Bathrooms

07818 487419
Anytime

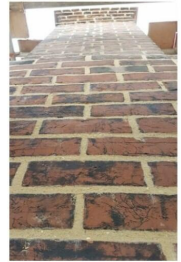
01255 861791
Evenings

daniel.electrical@btinternet.com

Ravenhill Restoration Ltd

Restoration Carpentry specialising in historical timber framed buildings

- * Bespoke oak frame carpentry
- * Restoration structural repairs to Oak frame buildings
- * A family run business
- * Historical brickwork repairs and lime pointing
- * Barn conversions
- * Rotten timber removal and replacement
- * Masonry crack stitching



We have a passion for working to restore historical buildings. Previous projects include St Paul's Cathedral, Westminster Abbey, Hadleigh Deanery and Bury St Edmunds' Cathedral.

Tel: Paul Ravenhill - 07595 900 539
ravenhillrestoration@gmail.com  Find us on Facebook

Nigel Bruce

Industrial & Domestic ELECTRICIAN

'The Swift', Upper Street,
Stratford St Mary,
Colchester CO7 6JW

Tel: (01206) 322 751

ARDLEIGH CHIMNEY SWEEP SERVICES



- Traditional and Power Sweeping
- CCTV Inspections
- Safety Certificate Issued
- Fully Insured

ANDREW SMITH

01206 231718 · 07845 249820

31 HARWICH ROAD, LAWFORD, MANNINGTREE, ESSEX CO11 2LS

MJS SYSTEMS

Audio Visual Security



- CCTV
- Intruder Alarms
- Security Lighting
- Door & Gate Entry
- Aerials & Satellites
- Home Entertainment

For a Free, No Obligation Quote

Please Contact Us on: 01206 322071

07778 931357

www.mjssystems.co.uk

QUARTZ GRIP®

a Step on Safety brand

Anti-Slip Solutions for Outdoor Floors

Protect family, friends & visitors from slips and falls in wet or icy weather with our Anti-Slip GRP Solutions.

- ✓ Decking Strips
- ✓ Stair Edging
- ✓ Stair Tread Covers
- ✓ 10 year Warranty

Ideal for homes, schools, pubs, healthcare, shops & more.

Easy to install on wood, brick, concrete & stone surfaces

WINTER OFFER
10% OFF
FIRST ORDER
QUOTE CODE PA10
Valid until 31-12-20



for wood



for concrete



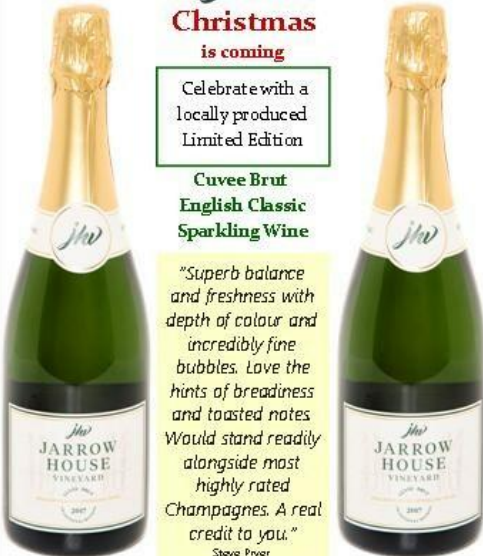
for brick

Buy online at www.quartzgrip.co.uk

or call 0800 6123 515 - Open Monday to Friday 8:30am to 4:30pm

JH
Christmas
is coming

Celebrate with a locally produced Limited Edition



**Cuvee Brut
English Classic
Sparkling Wine**

"Superb balance and freshness with depth of colour and incredibly fine bubbles. Love the hints of breadiness and toasted notes. Would stand readily alongside most highly rated Champagnes. A real credit to you."

Steve Pryor
Circle of Wine Writers

Contact us on 07932735116 07802462387
www.jarrowhousevineyard.com — jarrowhousevineyard@hotmail.com
jarrow_house_vineyard
Jarrow House Vineyard, Harwich Road, Ardleigh, Colchester, CO7 7LT

**DEDHAM'S EAGER BEAVER
HANDY MAN SERVICE**



- * Grass Cutting
- * Hedging
- * Garden Maintenance

**ANY JOB YOU HATE
WE CAN DO**

**Ring Phillip: 07939 250 018
After 6pm 322 554**

**Manningtree
Body Repair
Centre**

**Riverside Avenue West
Lawford
Manningtree
Essex
CO11 1UN
Tel / Fax: (01206) 393 191**

All Vehicle Body Repairs & Refinishing work undertaken including:

- Insurance Work, MOT welding, Panel Beating and Spraying
- Assistance given to "Non-Fault" Third Party Insured
- Collections and Delivery

**Andrew Ablett
Servicing & Repairs**
Foxash Workshop,
Foxash, Lawford, CO11 2LR
TEL: 07917 223274
Servicing, Repairs, Diagnostics
Cars - Vans - Motorcycles

 **Tree Surgeon**

Blake Tree Care
M: 07515 288736
O: 01787 228341
Providing excellence in:
Tree Felling - Canopy Reduction - Hedge Cutting
Tree Shaping and pruning - Stump Grinding
Pollarding - Emergency Storm Damage
Free Consultation for Small and Large Jobs

info@blaketreecare.co.uk
www.blaketreecare.co.uk

RIVA INSULATION



Specialists in Spray Foam Insulation

Find out how we could help you keep your bills low

- It's applied between rafters in pitched roofs
- Reduce your carbon footprint
- First developed for Nasa
 - Class 1 fire retardant
- Guaranteed for 25 years

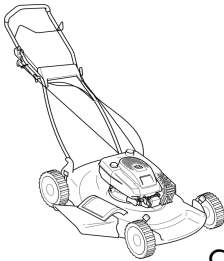
• **Green Homes Grant Scheme, Vouchers from the Government up to £5,000-£10,000**

e: info@rivainsulation.co.uk

w: rivainsulation.co.uk

t: 08001972758

TrustMark Licence No 1919345



Richard Kimberley Services Lawn Mower Service and Repair Centre

Rotary pedestrian, ride-on mowers, rotavators.

Shear sharpening service. Welding expert.

Proven workmanship. Engineering workshop established over 30 years.

Competitive, fast service, collection and delivery by arrangement.

Telephone: 01206 230964

Email: rks@richardkimberleyservices.co.uk

88 Hungerdown Lane, Lawford, Manningtree, CO11 2LY

Your local tree specialist



SPECIALIST TREE SURGERY • ARBORICULTURAL CONSULTANCY

07841 623027

www.jftreespecialist.com



FULLY INSURED AND COUNCIL APPROVED
FREE ESTIMATES AND EXPERT ADVISE

01206 231720 • INFO@JFTREESPECIALIST.COM

What we do

- ✓ Tree Surveys
- ✓ Planting and Aftercare
- ✓ Fruit Tree Pruning
- ✓ Felling and Dismantling
- ✓ Tree Monitoring
- ✓ Hedge Cutting
- ✓ Stump Removal
- ✓ Fencing
- ✓ Landscaping
- ✓ Logs and wood chip supplied
- ✓ Mobile sawmill service
- ✓ Mowing contracts
- ✓ Crown Reduction, Lifting, Thinning and Cleaning





SJS
PLASTERING

07506 768515

SJSPLASTERING.COM

Vale

BEAUTY LODGE



A full range of beauty treatments located within the heart of Dedham.

Contact Denise to book on 07445 281330

www.valebeautyloodge.com



HILL FARM
LANDSCAPES

*Landscaping &
Fencing Contractors*

01206 303608

www.hillfarmlandscapes.com



We have been repairing and installing new roofs for over 35 years. We believe we offer one of the best services for local domestic and commercial customers.

Holland Roofing East Ltd is a fast-expanding roofing company based in Essex, also covering areas such as Norfolk, Suffolk, London and Kent.

Our Services include:

- ✦ Flat Roofing
- ✦ Liquid Roofing Systems
- ✦ Green Roof Systems
- ✦ Slating & Tiling
- ✦ Roof repairs
- ✦ New Roofs
- ✦ Roof Cleaning Services
- ✦ Fascias, Soffits & Guttering

Our aim is to provide a consistent and comprehensive service to our clients by incorporating modern techniques, high-quality materials and years of expertise and experience in the roofing industry.

For a FREE quotation please

CALL US ON: 01206 616710

or

EMAIL US: info@hollandroofingltd.co.uk



R J Woods & Co Accountants

- Accounts
- Self Assessment Returns
- Company Tax Returns
- VAT
- Book-keeping
- Tax Planning
- Payroll

Confidential advice
Free initial consultation
Call Rob or Tracy Woods

Tel: 01206 322 604

Email: info@rjwoodsandco.com

Website: www.rjwoodsandco.com

CHARTERED ACCOUNTANT

Dedham based

**Accounting & Tax Services and Financial Consultancy
for small businesses
Affordable rates**

Accounts, self assessment, corporation tax, Quickbooks & Sage accounting software etc.

Call Philip Strangward on 01206 584913 or 07880 550000
for free initial consultation
www.philipstrangward.co.uk



HORIZON LANDSCAPES EAST ANGLIA LTD

Design, Construction, Restoration, Maintenance

Email: info@horizonlandscapesea.co.uk Tel: 01206 322646

www.horizonlandscapesea.co.uk

**Joined up
Legal
Services**

for you

**and your
family**

When it comes to your legal needs, one benefit of working with FJG is that we offer a full range of legal services. We can help with Conveyancing, Equity Release, Family Law, Planning, Personal Injury and Wills, Life Planning & Probate providing joined up thinking that keeps all of your legal affairs with one trusted firm.

Contact us today to make an appointment. Legal advice with a conscience.

FJG

FISHER
JONES
GREENWOOD
SOLICITORS

Fisher Jones Greenwood LLP, Charter Court,
Newcomen Way, Colchester Business Park,
Colchester, Essex, CO4 9YA
Offices across Essex and London

01206 700585
www.fjg.co.uk
enquiry@fjg.co.uk

THE SUN INN



A REFUGE THAT'S EASY TO FIND BUT HARD TO LEAVE,
WHERE TIME SLOWS DOWN IN THIS RUSTIC RETREAT.

The Sun Inn, High Street, Dedham, Essex CO7 6DF
Telephone: 01206 323351
www.thesuninndedham.com



Collier & Catchpole
COLLIERCATCHPOLE.CO.UK

BUILD WITH COLLIERS

YOUR LOCAL BUILDERS MERCHANT IS IN LAWFORD

Come down and check out what we have to offer

WE STOCK

BRICKS & BLOCKS | DRAINAGE | FENCING | BARK & TOPSOIL
TIMBER & INSULATION | ROOFING | PAINT | LANDSCAPING

Get in touch 01206 489299

Mobile

fresh fish shop

Dedham High street

THURSDAY 2pm - 2.30pm

Straight from Lowestoft fish market!
A wide selection of fresh fish, smoked fish and seasonal shell fish.

Every Thursday
2pm- 2.30pm

by the Dedham memorial

Deliveries also available in the Dedham area on Thursdays.



clinic1
facial aesthetics

by Julia Foster

MSc, RM, SCPHN, Aesthetic Nurse

- Anti-wrinkle injections
- Dermal Fillers
- Body Contouring
- Aqualyx fat dissolving
- Teeth grinding - Facial Slimming
- Nefertiti Neck lift - Necklace lines
- Tear Trough correction
- Nonsurgical rhinoplasty
- Facial contouring packages
- Gift vouchers available

20% OFF
Quote code
Dedham

T&Cs apply

07973 345053 

www.clinic1.co.uk 

clinicneessex 

juliacfoster@yahoo.co.uk 

Clinic One, Clarkes farm, Harts Lane, Ardleigh, CO7 7QH 



Concerned about SECURITY?

Would you like a FREE Security Review?

Hewes have been keeping Families and Business Safe and Secure since 1961

We supply both Commercial and Domestic properties and are a National Security Inspectorate (NSI) Gold installer with the ability to install new systems or upgrade existing equipment



- CCTV Supply & Installation
- Intruder & Fire Alarms
- Access Control & Gate Automation
- 24 hour Monitoring & Police Response
- Smart Phone Connectivity



01206 807218
HewesGroup.com



DEDHAM VALE TREE SURGERY

NPTC qualified, fully insured
24 hr emergency tree work
Hedge maintenance and reduction
Logs, kindling and woodchip supplied
Stump grinding



All tree work undertaken
Crown reduction and shaping
Crown lifting and thinning
Pruning and pollarding
Felling, sectional dismantling

Specialising in big trees in delicate situations

info@dedhamvaltetreesurgery.co.uk
www.dedhamvaltetreesurgery.co.uk

mobile 07756 811098
phone 01206 323056

HOLIDAY COTTAGE

Long Road East
DEDHAM

Weeks, Weekends & Between Houses.

Tel. 01206 323 345 / 0797 9757 470

www.holidaycottagededham.co.uk

E Mail owlbarn@live.com



07751517383
1 Threadneedle Street
Dedham
C076HH
‘Walk Ins Welcome’



Cakes by *Abi*

www.abisartonicakes.webs.com

*Creative bespoke cakes
which taste as stunning as they look.*

*Formerly a Pastry Chef at Claridge's specialising in
stylish cakes and patisserie for all occasions. Based in Dedham.*

Mobile: 07870217003 Email: abisarton@gmail.com



fiducia

wealth management & wealth preservation



fidelity
fiduciary *sides*
fiducia

How can you create a secure financial future for your family?

A conversation with one of our financial advisers could give you the clarity and planning you need for the future.

Fiducia Wealth Management, Dedham Hall Business Centre,
Brook Street, Dedham, Colchester CO7 6AD.

Telephone: **01206 321045** E-mail: email@fiduciawealth.co.uk Visit: fiduciawealth.co.uk

Authorised and regulated by the Financial Conduct Authority. FCA No. 408210

THE
Munnings
ART MUSEUM
DEDHAM - ESSEX

1 April - 1 November 2020
2pm - 5pm, Wednesday to Sunday
Bank Holidays 11am - 5pm

- Adults £8 (inc seniors)
- Children £1
- Concessions for students and National Art Pass holders
- Group bookings welcome
- Car and coach parking
- Café and shop

Reg. charity no. 310671

*Yours
with love
AJ*

*An exhibition based on the personal
correspondence of Alfred Munnings*



www.munningsmuseum.org.uk
enquiries@munningsmuseum.org.uk 01206 322127