

# DEDHAM

## PARISH MAGAZINE

### *September 2020*



Dedham from a hot air balloon



# DEDHAM PARISH MAGAZINE

SEPTEMBER 2020

The deadline for magazine entries is the 10th of the month

## DEDHAM PARISH CHURCH

[dedham-and-ardleigh-parishes.org.uk](http://dedham-and-ardleigh-parishes.org.uk)

Antony Wilson Vicar

☎323 919

Merv McKinney Assistant Minister

☎323 919

## PARISH OFFICE

Claire Arculus Parish Administrator

☎322 136

Charlotte Parker Assistant Parish Administrator & Safeguarding

Assembly Rooms High Street, Dedham CO7 6HJ  
✉stmaryda@gmail.com  
Tuesday 9-11am  
Thursday 11-1pm

## CHURCH WARDENS

Suzanne Woods ☎01255 870640

Peter Wilson ☎323 179

## MUSIC

Antony Watson Director of Music

☎322 425

## DEDHAM PARISH MAGAZINE

### Editor

Charlotte Parker ✉  
[dedhameditor@gmail.com](mailto:dedhameditor@gmail.com)

### Advertising

Sara Marshall ✉[dedham.advertising@gmail.com](mailto:dedham.advertising@gmail.com)

**Front Cover:** photo taken by Kim Wood from a hot air balloon early on a Sunday morning

## MAGAZINE CONTENT

2. Content
3. Services and events
4. Viewpoint
5. Rise N Shine
- 6-7. Notices

### Features:

- 8-9 A day in the life of the Dogfather
- 10-14 The Eley Family in Dedham
- 15. Huit Preludes pour Piano
- 16-17 The wine Industry
- 18-19 Open Water Swimming

### Organisations & Features

20. Dedham Parish Council
21. Gardening notes
22. Medical Matters
23. Local clubs

24-25 What's on

26-48 ADVERTISING



Follow us on facebook

If you would like a lift to church contact Ann Shaw ☎322 192  
or Ruth Higginson ☎322 598

**Can we help?** Sometimes things in life can just get too much to cope with on your own... **Psalm 34:18:** The Lord is close to the broken-hearted and saves those who are crushed in spirit. If you would like some support or know of any one who would,

please contact: Ann Shaw ☎322 192 or Christine Mingay ☎230 723

If you have been bereaved or know of anyone who has, please contact

Vee Druit ☎322 000 or Ruth Higginson ☎322 598

**First Steps:** Want to get back involved with church but don't know where to start?

Contact Liz and John Reed ☎323 770

## Services and Events SEPTEMBER 2020

### Sunday 6<sup>th</sup> September

8am	Holy Communion	Ardleigh
930am	Rise N' Shine	Dedham
5pm	Compline	Dedham

### Sunday 13<sup>th</sup> September

8am	Holy Communion <i>Followed by APCM</i>	Ardleigh
9.30am	Holy Communion	Dedham

### Sunday 20<sup>th</sup> September

8am	Holy Communion	Ardleigh
9.30am	Matins	Dedham

### Sunday 27<sup>th</sup> September

8am	Holy Communion	Ardleigh
9.30am	Harvest Morning Praise <i>Followed by APCM</i>	Dedham
5pm	Harvest ReVive@5	Dedham

### Sunday 4<sup>th</sup> October

9.30am	Harvest Rise N Shine	Dedham
11am	Harvest Celebration	Ardleigh
5pm	Compline	Dedham

### **YouTube Weekly Midweek Services**

*Morning Prayer 9am and Evening Prayer 5pm online everyday*

<https://www.youtube.com/channel/UC78SZfH5QRXMpy7DgfwYslg>



### **Annual Parochial Church Meetings:**

Ardleigh: 13<sup>th</sup> September 9am following 8am service

Dedham: 27<sup>th</sup> September 10.30am following 9.30am service

**Men's Breakfast** every other week on Saturday, *bring your own buttie!*

Saturday, 26<sup>th</sup> September, 9.00am at The Vicarage

**Ardleigh Friendship Group** every second & fourth Tuesday 10am with seating in front of porch, weather permitting. Please bring your own drink and food.

We look forward to seeing you!

### **Mission Bake Sales:**

BH Monday 31st August, Bric-a-brac sale



## ME AND GOD IN LOCKDOWN by Christine Mingay

Perhaps you, like me, welcomed lockdown as a rest and a break from routine. You may recall the sunshine days of spring when the gardens were full of new growth and invitations to stand and stare.

Soon I was asking God, What shall I do? Two things came to mind. One was to remember my wartime childhood and learn an alphabet. The alphabet I chose was the Hebrew one because we had just learnt the Hebrew word for God's loving kindness in the sermon series on Ruth. The other was a Webinar which ran for 12 weeks and fitted exactly into the lockdown schedule. On my screen I met people from Bedfordshire, Shropshire and even as far afield as Spain and Nazareth in Israel.

I was really pleased to have organised my education alongside the school children who were also confined to home. Then I found that the church too was organising services and events for me and there was Christian teaching on YouTube.

Lest I should feel cut off my cousin and I started a correspondence by email and I had Facetime from New Zealand. My neighbours offered to help with the shopping and friends came to help in the garden. The surgery sent a physiotherapist and a care worker and

additional help arrived. Loving kindness like God's was manifested all around me. Then I found I could join in: phoning, emailing, texting, writing to others with words of encouragement and friendship. Hearing of the pressing needs of Great Britain and the wider world I spent time putting my faith into practice by praying for others. Also I came to cherish the weekly Wednesday Zoom prayer meeting with others in the parishes.

I look back in thankful gratitude to God, who in the midst of a pandemic, invited us to work alongside him extending his loving kindness as described throughout the Bible.



**Christine Mingay**



# RiSe N SHiNe

is back on Sunday 6<sup>th</sup> September

Rise and Shine is our all-together service at Dedham, it lasts 45 minutes and will be especially appropriate for families with children at primary school, but people of all ages are welcome!

This month we're going to be having our service outside in the churchyard (weather permitting!), so do come and enjoy exploring the churchyard, worshipping and learning what being outside can teach us together about God.

Feel free to bring drinks and biscuits to enjoy afterwards.



## RiSe N SHiNe

all-together worship  
1<sup>st</sup> Sunday each month  
Dedham Church 9.30 to 10.15am



*hymns-songs-bible stories-refreshments*  
[dedham-and-ardleigh-parishes.org.uk](http://dedham-and-ardleigh-parishes.org.uk)

Find us on:  
 **facebook.** @dedhamandardleigh

*Thank you for your help!*

We are greatly encouraged by the response of church members to our appeal for funds earlier this year, and are extremely grateful to other members of our local community who have made donations to the church in these difficult times. This has eased our management of the essential running costs of St Mary's Church although, of necessity, we must continue to adhere to a strict budget.

Thank you for this very practical way of contributing towards keeping our place of worship open for ministry and prayer.

***The Vicar and Churchwardens***

## **DEDHAM MONDAY LUNCH CLUB**

There will be a Monday Lunch Club meeting on

**Monday 7<sup>th</sup> September  
at the Essex Rose at 5pm**

Sarah, the manager, has arranged for the Café to be open at this time for Lunch Club members only.

***Please book by 6<sup>th</sup> September***

by phone or by calling in, leaving a contact number if possible.

It will be the usual menu with perhaps 1 or 2 salad specials.

We are looking forward to catching up with everyone.

***Ann Shaw and Christine Frost***

## Medieval East Anglia

WEA Dedham – presents a course with Kate Jewell – which aims to explore the diverse society of medieval East Anglia and the rich culture which was an important part of that society.

We will discuss East Anglia's urban centres- Norwich, Ipswich, Colchester- it's power-players such as Bury St Edmunds Abbey, and the strong-minded women who played a vital role in East Anglian society. We will consider East Anglia's medieval culture- the cloth trade, the heritage of the parish churches, the written word and the many forms of art.

**Where:** ONLINE

**When:** 7th Oct - 16th Dec 20

**How long:** 10 sessions

**Time:** 9.00am - 10.30am

**Reference:** C2227506

**Cost:** £48.00

If you receive certain benefits you may be entitled to a free course.

**Book today**

[enrolonline.wea.org.uk](http://enrolonline.wea.org.uk)

0300 303 3464



The WEA is a charity registered in England and Wales  
(no. 111 2770) and in Scotland (no. SC294174)



wea.org.uk

# History & Culture

**WEA**  
Adult Learning  
Within Reach



## A Day in the Life of the Dogfather



I loved teaching; it was my passion for 22 years. I was proud of what I was doing and I knew I was making a real difference. But something changed, and what once energised me was draining me. Where I used to find drive, I found pressure. Then one evening, when I was feeling particularly worn out by my day, my wife asked me “what do you enjoy doing?” I could answer that straight away; “walking”, I said. “walking here, where we live. I could just do it all day long and I’d never get tired”.

“So find a job that lets you do that then” she said.

I had never considered not teaching until that point, but what my wife was saying was so simple. Do what you enjoy doing.

I started researching, and considered studying to be a forest ranger or a green keeper. As I was reading about these options on the iPad, our little dog Henry potted in and plonked himself on my feet. Time for walkies.

And that was it.

I could walk dogs. I love dogs! I could walk dogs in the beautiful Dedham Vale.

It was scary but so exciting, writing my resignation. Stepping into the unknown. But time to be brave; time to do what I was passionate about again.

I set up my business in January and I’ve never looked back. I did a qualification in animal care and dog walking and sorted out my insurance. I did a bit of local advertising and asked our wonderful local businesses for help. Now, instead of a double lesson with year 10 students at 10am, my timetable says “Kia”, followed by “Mollie and Flick”. Bobby is next, just before lunch, then in the afternoon I’ve got little Lego the Dachshund, followed by a short drive over to Langham to take out Romy and Mouse before my last walk of the day in Stratford St Mary. I’ll also be popping in to see Millie the cat for a play and a cuddle this evening as her family are away. That’s just an example of my new timetable, but every day makes me smile when I check what it has in store for me. My furry clients and I love nothing more than either a ramble across the fields or a trot by the river.

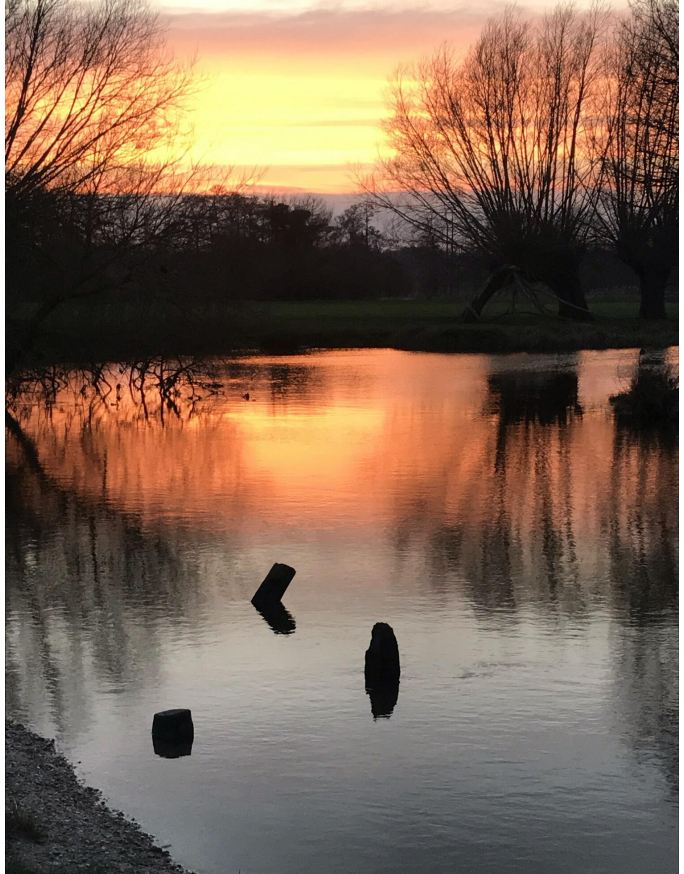
I have my energy back, and it sounds so cheesy I know, but I have a new outlook on life. My wife and I suffered a tragic loss a couple of years ago, and new clients have really helped me start to appreciate the little things again. The smell of the rain on the cornfields early in the morning. The way the sun breaks through the trees at a particular spot on East Lane. How friendly and kind people are who we meet and greet on a daily basis. I've raised my head up from the grindstone and have literally felt the tension I didn't even know was there, drain away.

Health and fitness has always been a hobby of mine, so what perfect way to spend my days? I'm now also studying for a personal training qualification at the tender age of 45, which I intend to fit around my furry clients. I'll be doing even more of what I love.

I do realise how lucky I am and not everyone can simply switch careers at this stage in their lives. But I would just urge you to spend a little bit piece of every day doing something you love. Something that makes you feel content and grateful.

My day now starts with yoga at 6am rather than lesson planning; and I like to think my clients get the best of me every day, as I genuinely can't wait to see them for our next adventure.

**Lee Firmin**  
***The Dogfather of Dedham***



For more information on  
Lee's services, contact him on  
07896020060  
or email him at  
[leefirmin41@gmail.com](mailto:leefirmin41@gmail.com)

## The Eley Family in Dedham

*I am greatly indebted to Ted's granddaughters, Ann Pearce and Janet Bugg and Ann's husband Mark for valuable information, the generous loan of their family albums and their kind permission to reproduce the photographs used here.*

### Part 2: Eley's Tearooms and Boatyard

Eley's bakery established in 1891 provided refreshments besides selling bread and as late as the 1950s the left hand side of the High Street premises was still being used as a tea shop. However the new business opportunity which opened up around 1900 was providing teas on a larger scale for the day trippers who were beginning to arrive in the village. Many of them were cyclists and the Cyclists Touring Club badge mounted on the side wall of the bakery, seen in a photograph dating from the 1920s, indicated that members were welcome and would get preferential rates. Horse charabancs brought the first tourist numbers. Tea gardens were very popular and John Eley's first one was in his orchard off Princler Lane. Then he bought London House across the High Street, where some of his employees lived, and its south-facing garden became the Eley's Tea Garden seen in a publicity photograph with a pergola and cascading roses. He faced direct competition when a former employee borrowed money from him and then shocked him

by setting up doing teas himself next door. Another rival was Henry Gammer whose tea garden behind Ivy House offered light refreshments and teas between 1907 and 1913.

John Eley described himself as "a refreshment contractor catering for large or small parties." Judging by a surviving menu dating from the 1920s the tearoom and garden provided substantial fare and must have been fairly spacious because Ted and Connie remembered that no fewer than five charabanc loads came on the day when Jim Eley was born in 1925. Providing so many teas put an extra strain on the Eleys' water supply which was needed for the horses drawing the delivery vans as well as the bakery itself. In summer the well tended to run dry; so on Saturdays when there was a water cart in Royal Square they employed a boy to come and go all day fetching water and pouring it into the tank above the bread oven. They paid £100 to have their well deepened, only to be told that the water was not pure; so they went on to the mains just as soon as it was possible.

Then, as nowadays, a particular lure for visitors was the river but there were no rowing boats for hire in the late nineteenth century. The Stour was still a working waterway at that time with barges plying between Sudbury and Mistley but by 1900 river traffic was dwindling. A serious drought in 1901 caused problems with the flow of water and barges were increasingly losing business to the railways.



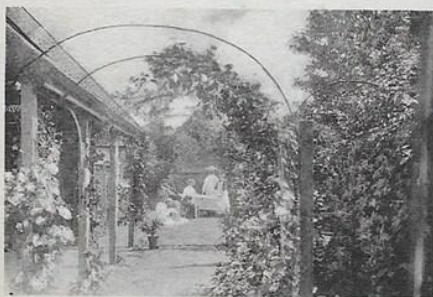
**JOHN ELEY,**  
**HIGH STREET, DEDHAM.**

**REFRESHMENT CONTRACTOR.**  
Large or Small Parties Catered for.

Boats on Hire. Storage for Motors & Cycles.



ELEY'S REFRESHMENT ROOMS.



ELEY'S TEA GARDEN.



ELEY'S LANDING STAGE.

*John Eley's advertising postcard, before 1918, showing the shop, tea garden and landing stage*

With manpower shortages at the outbreak of the Second World War it was decided to put down the tow horses and scuttle the remaining barges. Sir Alfred Munnings painted a derelict barge beside the river in 1924 and four years later Percy Clover's last barge made its final journey. Long after the navigation had lapsed the remaining traces of the tow path were finally obliterated when the river was dredged in the early 1950s and the spoil including heaps of oyster shells spread along its banks. As children we optimistically searched for pearls!

In the early 1900s John Eley realised that there was a new opportunity for leisure

boating and he bought a wharf beside Dedham bridge, which had been used for unloading chalk used in agriculture. He subsequently protected his monopoly by buying the nearby site of the gas works (now The Millstream and its garden) after it had closed down in 1923 because he feared a competitor might use it to establish a rival undertaking with access along the Black Brook to the main river. He set up his boatyard business around 1910, equipping it as economically as possible. There were no buildings on the site when he took it on. The weatherboarded structure with a corrugated iron roof, shown in a photograph taken c.1910, was an "engineering shed" bought from Courtaulds in Braintree; he had come to hear that it was being sold off because

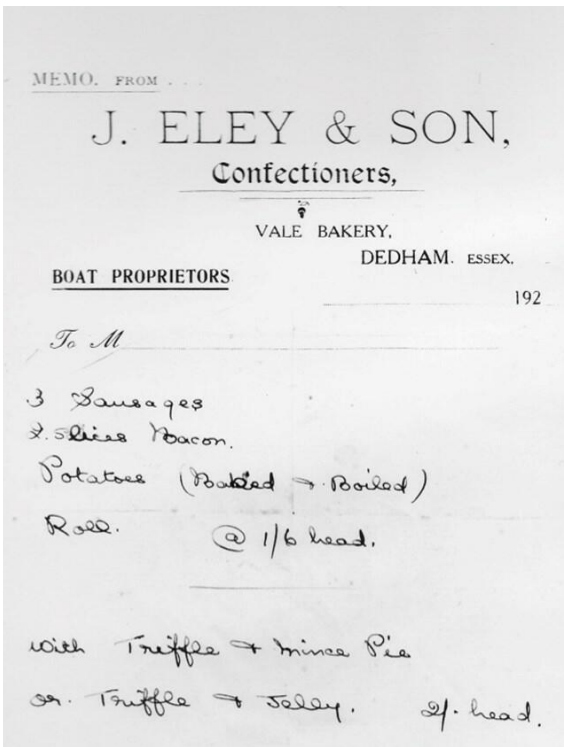
his wife's family lived in the town. He began making the boatyard setting more attractive by planting the chestnut trees which are such a picturesque feature now. The boats were second hand, made in Brightlingsea. There were two which came from Rowhedge and two from Ipswich and Mr Clementson at Langham sold him a canoe. Ted told me that two more canoes were left behind by fellows on holiday from Oxford, who sold them to Eley's rather than paying to take them home. The first four rowing boats were named Hilda, Amy, Peggy and Connie after John and Julia Minnie Eley's three nieces and their own daughter.

Conveniently the boatyard could be reached from the bakery by a path leading from the end of Princl Lane through to Mill Lane. Mr Banting, proprietor of the Sun told the Eleys about this right of way behind the High Street which must originally have been the night soil track, used before the days of mains drainage to gain access to the backs of the houses for emptying the residents' earth closets. The path then passed through the field behind the present Haywain (then a row of cottages), where the Eleys had a pigsty, an orchard and gardens for the use of their employees living at London House. They kept this land until Ted and Connie retired and closed the bakery in 1962.

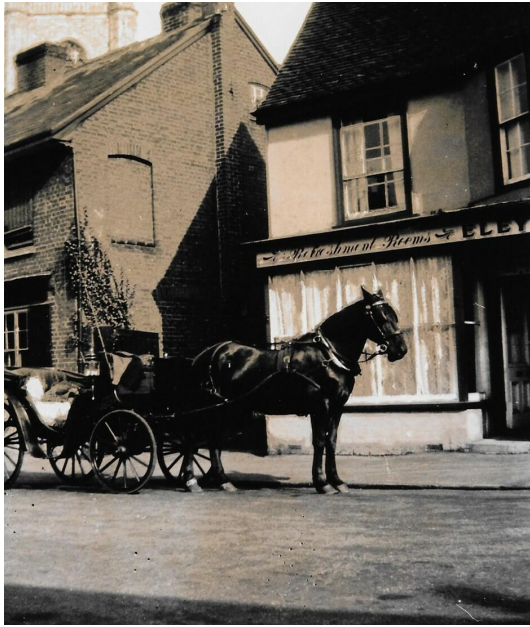
The boatyard eventually shut down during the Second World War and was bought by a firm at Ipswich, who in turn sold it on to its next owner, boat builder Frederick Smeech. Since 2002 it has belonged to Cameron and Claire Marshall, who run the popular Boathouse Restaurant. They have twenty-six rowing boats available for hire during the summer months.

© Lucy Archer

**Next time:  
Part 3: Ted and Connie Eley**



Eley's tearoom menu, 1920s, offering meals at 1/6d or 2 shillings a head



*Eley's Refreshment Rooms at London House in the early 20th century. The tea garden was behind the house.*



*The boatyard in the early twentieth century beside the new Dedham bridge installed in 1900. Note to its right the wooden planking of the surviving tow path across the tributary*





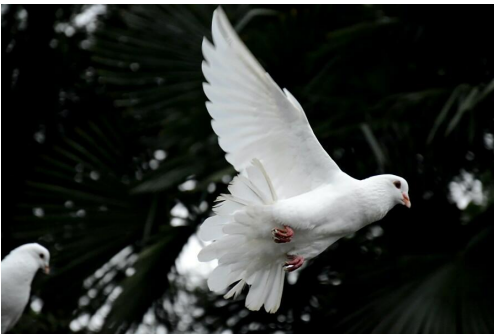
*John Eley's boatyard, set up around 1910. On the left is a tent belonging the recently-founded Dedham Scout Troop*



*The Boatyard with rowing boats and canoes in 1934. The round-topped corrugated iron shed was bought second-hand from Courtaulds in Halstead*

**Huit Préludes pour Piano**

This poem is the first in a set of eight entitled 'Huit Préludes Pour Piano', based on the early compositions for piano by the French composer Olivier Messiaen. The poems themselves include frequent references to other works of European literature, as well as to the particular interests and compositional habits of Messiaen himself. Among these is his synaesthesia, which caused him to see colours when hearing music. Fortunately, he wrote about the specific properties of each of his preludes, which I weave into each poem – in this case, orange veined with violet. Messiaen also sustained a particular passion for ornithology throughout his lifetime, which would inspire several of his late works, and therefore I have attempted to weave in references to various species where appropriate throughout the poems. Note also the symmetry of the poem's form, which reflects Messiaen's interest in repetition and symmetry.



*James Sambrook*

**I. La Colombe**

*'Guint' è la Primavera e festosetti  
La Salutan gl' Augei con lieto canto'  
– anon., possibly Antonio Vivaldi*

swaying, swaying  
weaving  
the viridescent brushstrokes  
offer themselves to the wind

untouched, untouched

a single leaf  
takes its freedom  
and rides the zephyr  
far, far, a traveller  
in the breeze

untouched, untouched

the grass that grows uncut  
the hanging willow  
the overgrown path  
with veins of violets  
the empty sky  
the breath of the earth  
and the dove that found land

untouched, untouched

moss over forgotten cobbles

untouched, untouched

a nesting dove  
by a web of silk

untouched, untouched

a single leaf  
takes its freedom  
and rides the zephyr  
far, far, a traveller  
in the breeze

untouched, untouched

swaying, swaying  
weaving  
the viridescent brushstroke  
that offers itself to the wind

## Dedham – perfect country for fine wines



Grape harvest at Dedham Vale Vineyard

**C**heers! *Appellation Dedham Controlée* does not yet trip off the tongues of wine connoisseurs, but it may be a matter of time. A growing number of vineyards around the village is joining the highly successful English wine industry. Most are expanding production, notably of sparkling wines intended to compete with the better champagnes .

In addition to the new vineyard south of the A12, overlooked by the Stratford St Mary Church, there is Prettyfields vineyard, close to the Ardleigh reservoir on Dead Lane, and a newly planted vineyard on the Coggeshall Road owned by Thorrington Mill vineyard near Brightlingsea. Jarrow House on the Harwich Road outside Ardleigh has been planting new vines, as has the larger Dedham Vale Vineyard at Boxted. A little further afield, Shotley Vineyard produced its first vintage last year while the longer established Mersea Island Vineyard produces some 20,000 bottles a year.

Robert Auld, owner of Jarrow House, says: “We have the perfect dry climate and free draining soil for vines – similar to the Bordeaux region in France.”. When Robert retired from growing salad crops six years ago, he decided to plant a few vines on his land. He has since planted more and now has 700 vines that will produce about two tons of grapes – around 500 bottles of sparkling wine.

For him it is not much more than a retirement hobby. “It’s great fun,” he says. “Pals come to help me and I pay them in wine. It’s ever so nice if you have a little party or celebration and bring your own wine.” But even at this small scale he hopes to make money and to interest his grandchildren in the business. His sparkling wine sells for £28 a bottle, but the outlay is high. Each vine costs about £1.50. There are the stakes and wires and protection for the young plants and then a two-year wait before the first harvest. Robert’s grapes are taken for processing to New Hall near



Prettyfields Vineyard next to the Ardleigh reservoir

Maldon, a comparatively long established winemaker. The wine is stored there for two years or more and is made by the traditional (labour-intensive) method of upending the bottle, freezing the neck, then withdrawing the cork to scrape away the sediment - without losing the all-important bubbles.

Other growers use different winemakers, However Dedham Vale Vineyard, now under the management of Hugo Wilson and his family, plans to build a new winemaking facility with about three times as much capacity as it will need for its own vines. The vineyard now produces about 12 tons, although this will increase as 2200 new vines were planted last year. Hugo said: "We plan to provide a service to other vineyards and smallholdings."

Dedham Vale, like several of the other wineries including Prettyfields, Thorrington Mill and West Mersea encourage visitors to tour the vineyards and, they hope, to buy some bottles. These visits were suspended during the lockdown, but Robert Blyth at Prettyfields says they are now open again with a range of activities.

Prettyfields produces about 20,000 bottles a year of still and sparkling with a top price of £30. Robert says they have to compete on quality because UK taxes are higher than in France. However, in addition to the natural advantages of climate and soil in the region, his vineyard enjoys a microclimate from the Ardleigh reservoir which keeps it warm during cold periods.

Robert Blyth's cousin and partner, Tom Bunting is one of the larger operators in the area. He owns the vineyard by the A12, among others, and used to be one of those running the Dedham Vale Vineyard. He says he got into the business by chance about 20 years ago but the last four years had been "phenomenal".

This optimism is reflected nationally. Simon Robinson, chairman of WineGB, says the industry has "come of age". An excellent harvest in 2018 combined with extensive new planting brought the UK's total production to about 13 million bottles. more than twice the previous year's output. East Anglia is only a small part of this. with just 4 per cent of the 3500 hectares of vineyards in the UK. By far the greatest production is in the South East.

Still, if East Anglian wines can maintain their quality, they will benefit from the growing international reputation of English white and sparkling wines. The increased investment in the Dedham area reflects this optimism.

*Max Wilkinson*



## Open Water swimming at the Dedham Mill Pond



Have you noticed lately that the swans and ducks are not the only ones enjoying swimming in the river stour?

Along with the huge increase of water traffic from kayaks, canoes and inflatable sup's, since lockdown the number of open water swimmers has also significantly increased here in Dedham.

Open water swimming is one of the fastest growing sports in the UK and Dedham has always been a swimming beauty spot for many whom enjoying dipping and swimming here all year round.

Vicky Malmsjo is the founder of Swimspirational Open Water Coaching and member of the Dedham River Swimmers Group, she tells us why she believes that the summer of 2020 has been all about wild swimming

“Wild Swimming has certainly increased in popularity this year. As both a coach and outdoor swimmer myself I have seen the number of people wanting to swim outside double. As the pools remained shut until the end of July, swimmers were keen to embrace new

experiences and take their training outside. Triathletes have traditionally always swam in lakes and seas but this summer many chose to introduce river swimming into the mix too.

However, it's not just triathletes that are swimming in the river. There are many more people that are choosing to swim in the great outdoors for many other reasons. River temperatures can range between 16 and 24 degrees in the summer months and considering that most pools are around 30 degrees, the cooler water that outdoor swimming offers can provide both physical and mental health benefits to those that take part in the activity.

The other huge benefit for many is the social aspect of open water swimming. There is something very special about outdoor swimmers, they always have enormous smiles on their faces, they are some of the most welcoming people that you will probably ever meet and everyone leaves a swim as new friends. Swimming outdoors as a group bonds people together as no matter what else is going on in your life, you can always find solace in a river swim. “

There are also safety considerations whenever you swim in the river and Vicky shares her Top Tips with us below

**1. Acclimatisation:** The sudden change in temperature on entering the water can cause physical and mental shock that may result in panic. To prevent this, it is important to change the skin temperature in a controlled way. If you are new to open water swimming wear a wetsuit and always enter the water slowly and calmly. Acclimatise to the water by gently splashing your face, back of neck, hands and feet. Open the wetsuit around the wrists and neck to allow water to enter the suit. This will create a warm layer between skin and neoprene.

**2. Breathing:** RELAX, RELAX, RELAX. Do not panic or breathe too quickly as this may cause you to hyperventilate. Maintain slow, calm, controlled breathing. Do not start swimming until your breathing is relaxed.

**3. Kit:** Always swim safely, preferably with your wetsuit, brightly coloured swim cap, tow float and goggles. Swim socks and gloves may also help in the colder temperatures.

**4. Swim in a Group:** It is recommended to swim as part of a group and always at the pace of the slowest swimmer. Never leave anyone behind. If you are an experienced open water swimmer and do swim alone always make sure that someone knows you are there.

**5. Duration:** Always keep track on how long you have been in the water. Be sensible. If possible wear a

waterproof watch. Recognise the signs of hyperthermia – slurred speech, confusion, shivering, muscle stiffness, pale cold skin, low levels of response. If this happens leave the water immediately and warm up gradually with loose fitting layers and a warm drink.

**6. Risks & Hazards:** Always pay attention and seek local knowledge when swimming in any rivers. Be aware of your own swimming ability. Be aware of risks such as algae, swimmers itch, rocks & rugged terrain underfoot, current and depth. Water levels can change very quickly and currents can move you in opposite directions to which you are swimming. Always do your own risk assessments.



If you are curious to learn more about Open Water Swimming, please visit [www.swimspirational.co.uk](http://www.swimspirational.co.uk) or email [info@swimspirational.co.uk](mailto:info@swimspirational.co.uk)

Alternatively please join the Facebook Group “Dedham River Swimmers” – regular social swims take place every Sunday morning at 8am from the mill pond and everyone is welcome to attend

**Dedham Parish Council** continues to use 'Zoom' for its monthly meetings on the first Monday of each month for the time being. Please check our website for full details.

We have completed a risk assessment on our playground prior to re-opening and hope that users will follow the rules designed to keep everyone safe. In common with many areas we are seeing a large increase in visitor numbers which puts pressure on our limited facilities. We continue to work with partner agencies to try to minimise disruption for residents.

We are seeing an increasing number of 'near miss' traffic incidents along Long Road East and West. There is a form on our website for residents to log any incidents. This will help with our attempts to secure some form of traffic calming along this long straight stretch of road. The form can also be used to log issues on any other road in the village."

**Nicola Baker**  
**Dedham Parish Council**

## Gardening Notes

### Cut back for cuttings

I bet you thought you could relax in the sunshine and enjoy the fruits of your labour now summer is drawing to a close. There's certainly plenty to look at: colourful dahlias are doing their thing and black-eyed susan (*Rudbeckia*) are starting to make yellow pops of colour in the borders. But there's no time for that, now we need to start thinking about autumn, about cutting back and clearing the borders for winter.

I know... already?! But we can ease ourselves into the bigger jobs with a little bit of summer pruning of any fruit trees or bushes. Get this done as quickly as possible as it should really have been done in August. Summer pruning is to restrict growth (so trained forms like cordons, espaliers and fans benefit from most from it), while pruning in winter encourages growth next season.

My mini-orchard needs some serious pruning as I may have gone overboard in training cordon pears and plums, and growing apples as pyramid trees. Look for any new shoots (laterals, if you want to be horticultural about it) growing out from the main stem that are more than 8 inches long (about the length of your secateurs). The base of this growth should be woody by now and you need to cut it back to three leaves.

On non-trained forms, for instance if you're growing a pyramid tree, you will probably have branches (laterals again) coming off the stem that you want to keep. There will be side-shoots (sub-laterals) growing off these and you can cut these back harder to one leaf.

Job done? Now look around for what needs cutting back and tidying up other than trees. Hardy geraniums may have finished their first flush of flowers and be flopping all over the place, so whack them back to ground level. Water well with a good liquid feed and your reward should be fresh growth and maybe more flowers. If you have it, you can probably cut back the shade-loving *Pulmonaria officinalis* (lungwort) too, while *Achillea ptarmica* 'The Pearl' has done its thing in my borders, so I chop it back by half to

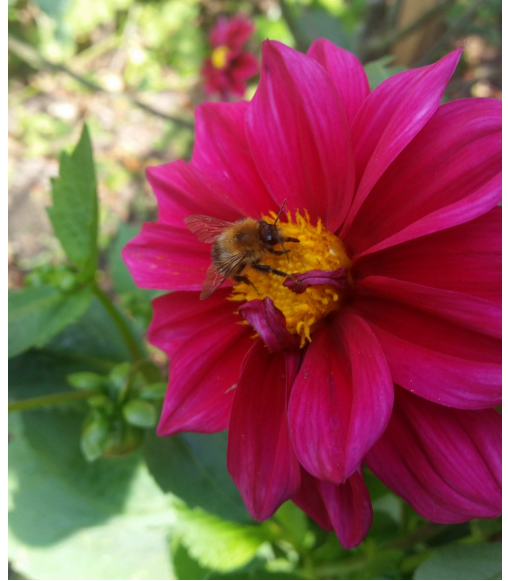
remove the unsightly browned flowerheads. This is a great filler: spreading well but easy to dig up and replant elsewhere if it gets too much.

Now that the flowerheads on your lavender have faded, cut it back to encourage new growth before the end of the season and help protect it over winter. A good trim will also maintain a good shape to this plant that is notorious for getting leggy. Cut away the whole flower stem (you can hang them upside down to dry if you're into that) and a couple of centimetres of this year's growth. Be careful not to cut back to bare wood that has no leaves, as this will not always regrow.

It's getting a bit late now, but you can still have a go at taking semi-ripe cuttings with the bits you remove to replace any plants that may not make it through the winter or, like some of mine, are leggy beyond repair. You can do this with other shrubs too including box (*Buxus*) and the Californian lilac (*Ceanothus*).

Take cuttings from this season's growth with sharp secateurs or a knife. The base of the cutting should be hard, while the tip is still soft. Trim each one to 4-6 inches and cut just below where a leaf meets the stem. Remove the lowest leaves and the soft tip which will wilt rapidly. Dip the base of the cutting in hormone rooting powder and insert around the side of a pot filled with very gritty and free-draining cuttings compost and water well. Cover with a plastic bag to maintain humidity and put in a warm, light position, out of direct sunshine. You'll know it has taken

when you see fresh new growth, which can happen quite quickly at this time of year. Try it with fuchsias too.



After clearing and cutting back the borders, give everything a good mulching to give moisture in, reduce weeds, help more tender plants through the winter and improve soil structure. Chuck everything you've cut off on the compost heap, stirring it regularly to let in lots of air and help it rot down faster. Now you can relax.

*Although we are taking it one event at a time, Dedham Horticultural Society is unlikely to run events this year due to Covid-19 precautions. Keep an eye on our website, for the latest updates*

[www.dedhamgardening.wordpress.com](http://www.dedhamgardening.wordpress.com),

*If you can and as they continue to open in coming weeks and months, please try to show your support for one of our great British gardens or local nurseries.*

**Elliot Frisby**  
**Dedham Horticultural Society**



## Constable Country Medical Practice

### Coronavirus Update

As we head into autumn it is vital that we continue with the measures which have been in place for the last few months to protect both staff and patients from Covid-19.

Our primary objective at the practice is to minimise the need for patients to come to the practice at all, but if they need to then to minimise the risk. Here is a summary of the measures we have put in place:

- If possible, submit any medical or admin query via our online eConsult service. We aim to respond to all eConsults within 2 working days.
- If you cannot use eConsult or if your need is urgent, our receptionists will place you on a triage list and one of our doctors or nurse practitioners will call you back.
- If you need to come to the practice, the clinician will ask you to wait in your car with your mobile. The clinician will call you when they are ready to see you.
- You must tell us if you are experiencing any Covid-19 symptoms such as fever, a new cough, or loss of taste and smell.

Please wear a mask or wrap a scarf around your face when you come to the practice, and sanitise your hands.

Please be assured that you can contact us if you feel you need to speak to a

clinician about any health concerns you may have. If you have concerns regarding the health of vulnerable patients, please inform us.

### Flu Vaccinations

We will operate our flu vaccination programme very differently this year. All flu vaccinations will be by appointment only. We will commence vaccinations at the end of September and aim to complete them by the end of November. We will be sending out invite letters to all eligible patients through this period, initially to vulnerable patients and patients with medical conditions that put them at risk.

The letter will contain full instructions but essentially patients will contact the practice to book an appointment. They must not attend for the appointment more than 5 minutes early, and must follow strict guidelines regarding entering and exiting the building, hand sanitising, and wearing of face masks/coverings. This will enable us to deliver vaccinations efficiently and safely.

Thank you for your continued support and co-operation.

**Pete Keeble,  
Practice Manager**



Stour Valley U3A is bouncing back! Groups **Learn, laugh, live** re-opened include Wine Appreciation • Five Mile Walking • Philosophy • Country Walking • Science • Book Group • French Conversation • Italian • Canoe & Kayak • Curry Club • new group Get Fit Again and many others re-opening soon Visit our website for latest news and information

[www.stourvalleyu3a.org.uk](http://www.stourvalleyu3a.org.uk)

or contact Chairman Graham Manuel

[gandamauel@gmail.com](mailto:gandamauel@gmail.com)

or Secretary Susan Basted

[susanbasted10@gmail.com](mailto:susanbasted10@gmail.com)



## Stour Valley Men's Probus Club

**Recent Meetings:** Our last meeting, held on 17 March 2020, was our AGM when Dave Carman was voted in, again, as President and Speaker Secretary, Graeme Forsyth as Secretary and Val Pretty as Treasurer.

**Future Meetings:** In the light of the Coronavirus outbreak all future Club meetings have been cancelled. We always take a break in August and we plan to meet again on 16 September 2020, conditions permitting, when Norman Jacobs will return again and this time speak on "Clown Bertram - Clacton's most famous entertainer".

**Meeting Venue:** We meet at the convenient St John Ambulance HQ, Manningtree CO11 1EB

**New members are welcomed:** Our Club endeavours to be simple in structure, be free of the constraints and obligations of service clubs, and involve members to a minimal cost. **New Members** are always very welcome at all meetings of the Stour Valley Men's Probus Club, just join us at 10am on a meeting date. The club is directed primarily to providing fellowship between members who are compatible with each other, and provide the opportunity for development of acquaintances. We meet on the first and third Wednesday of each month in Manningtree at 10 for 10.30am.

Please contact President Dave Carman on 01255 880202 for further details.

## The Dedham Educational Foundation

The Governors invite applications from residents of the parishes of:

**Ardleigh, Bradfield, Dedham, Great Bromley & Stratford St Mary**

For financial grants that are available in the following categories:

**Secondary Schools & Sixth Form Colleges;**

Applicants must be at least 11 years of age on 1st August of the year of application

**Universities & Colleges of Further Education;**

Applicant must have lived in one or more of the five parishes for at least 2 years prior to the application date

For an application form or further details, please contact Clerk to the Governors  
Mrs Jean Flewin, Telephone 01206 322215

Coppins, Crown Street, Dedham, Colchester, Essex, CO7 6AT

**CLOSING DATE FOR APPLICATIONS: 31st October 2020**

A range of online events is still available during the shutdown, mostly FREE and much of it via YouTube. The daily showing from the Metropolitan Opera New York has now tended to move into repeats. However it is putting on a series Star recitals until the end of the year, each costing \$20.

The National Theatre has ended its free online shows, but Glyndebourne still offers free operas. You can check details on my website which has clickable links to performances. If accessing my site online press and hold Ctrl while clicking this link:

[www.eamaa.org](http://www.eamaa.org)

*Max Wilkinson*

## Theatre

**Marquee TV**, Many productions , including from the Royal Shakespeare Company, the Royal Opera House, Glyndebourne, Free 14 day trial then £8.99 per month.

BBC iPlayer, **Shakespeare: eight plays , one ballet**, from The Globe: The Tempest and A Midsummer Night's Dream. From the Royal Shakespeare Co: Much Ado about Nothing, Othello, The Merchant of Venice, Romeo and Juliet, Macbeth, Hamlet plus The Royal Ballet: Romeo & Juliet- Beyond Words.

Globe Theatre London, rent or buy, **Shakespeare**, most of his plays and some others, Globe Player online.

Royal Shakespeare Company, **18 productions**, available to stream on Marquee TV. After the free trial, Marquee TV costs £8.99 per month .

WhatsOnStage, **An excellent list**, of free online stage shows, musicals and opera including The Importance of Being Earnest, What The Butler Saw, Pride and Prejudice (musical), live readings of Shakespeare plays (the Show Must Go On),

## Music

**London Philharmonic Online**, series of free concerts.

**Schedule of online free musical events**, from ClassicalMPR.

Berliner Philharmoniker Orchestra, **Concert Archive**, Some 600 concerts are in the archive. Free trial offered.

London Symphony Orchestra. More than 500 videos on the LSO YouTube channel.

Metropolitan Opera New York, **Met Stars Live in Concert**, A series of 12 pay-per-view recitals From around the world, each \$20 from the Met website. To December 19. Concerts available for 12 days.

Metropolitan Opera New York, live pay-per-view recital, **Robert Alagna and Aleksandra Kurzak in Èze, France**, 6pm, to 5 Sep, Price \$20; starts 6pm UK time; available for 20 days.

Monteverdi Choir and Orchestra, **A selection of concerts**.

Music in Felixstowe, **Wednesday concerts**, at 11.30 am . Previous live streams also available, streamed via FB.

Orchestra of the Age of Enlightenment, **The Show Must Go On(line)**, Includes quarantine sessions with musicians playing from their homes.

Orchestra of the Royal Opera House, **Bach: Double Violin Concerto in D Minor, Handel: Alleluiah Chorus**, played remotely while social distancing, via YouTube.

Wigmore Hall, **video library**, almost 50 concerts available to stream via YouTube.

### **Saturday 29 August**

Metropolitan Opera New York, live pay-per-view recital, **Lise Davidsen** in Oslo, 6pm, to 17 Sep,

### **Saturday 12 September**

Metropolitan Opera New York, live pay-per-view recital, **Joyce DiDonato mezzo-soprano** in Barcelona, 6pm, to 9 Oct,



Joyce DiDonato in concert 12 Sept

### **Saturday 26 September**

Metropolitan Opera New York, live pay-per-view recital, **Piotr Beczala and Sondra Radvanovsky** in Barcelona, 6pm, to 16 Oct.

### **Opera/musical**

**Les Misérables**, the West End show in a staged version available to download via Sky, Amazon or iTunes Store for £9.99, of which £5 goes to charities.

**Wind in the Willows**, From London's West End, Rent for £2.99.

**Marquee TV**, Many productions, including from the Royal Opera House, the Royal Shakespeare Company, Glyndebourne, Free 14 day trial then £8.99 per month.

**Andrew Lloyd Webber**, various shows streamed free on Fridays for 48 hours, via YouTube.

### **Sunday 23 August**

Glyndebourne Music, **Purcell: The Fairy Queen**, to 30 Aug.

### **Sunday 30 August**

Glyndebourne Music, **Wagner: Die Meistersinger von Nürnberg**, with Gerald Finley, to 6 Sep.





*Kingsleigh*  
Property Consultants

**High Street, Dedham,  
CO7 6DE**



Peter and the Kingsleigh team wish to extend their gratitude to our Dedham neighbours for helping make 2020 a winning year. If you're thinking of moving, why not give us a call and experience our award-winning service for yourself.



**SALES &  
LETTINGS**



[sales@kingsleighresidential.co.uk](mailto:sales@kingsleighresidential.co.uk)  
[lettings@kingsleighresidential.co.uk](mailto:lettings@kingsleighresidential.co.uk)  
[www.kingsleighresidential.co.uk](http://www.kingsleighresidential.co.uk)

# BAILAND

CONSTRUCTION LIMITED

**EXQUISITE ATTENTION TO DETAIL**

TOAD HALL  
THE HEATH, DEDHAM  
ESSEX, CO7 6BT  
01206 323230

**WWW.BAILANDCONSTRUCTIONLIMITED.CO.UK**  
**ENQUIRIES@BAILANDLTD.CO.UK**



## Bland Landscapes Ltd

**Our services include:**

01206 230882  
[www.blandlandscapes.co.uk](http://www.blandlandscapes.co.uk)

Ivydene, Frating Road  
Colchester, Essex, CO7 7SY

Treework Specialists	All types Fencing Inc.
Felling	Equestrian Fencing
Pruning	Driveways
Reducing	Patios
Reshaping	Turfing
Stump grinding	Planting
Seasoned Logs	Grass Cutting

## MARK FAGE ARCHITECT

MODERN AND TRADITIONAL DESIGN  
RESIDENTIAL & COMMERCIAL PROJECTS  
LOCAL KNOWLEDGE AND SUCCESS

**Tel 07976 655387**      **[www.markfage.com](http://www.markfage.com)**  
**e mail**      **[mark\\_fage@btinternet.com](mailto:mark_fage@btinternet.com)**

# Right at Home Colchester & District

Quality Care & Support, from hourly visits to Live-In care.



## Our services include:

- Companionship
- Transportation and errands
- Meal preparation
- Light housekeeping
- Help with washing
- Personal care
- Medication support
- Post-operative support
- Live-In care
- Specialist Dementia care
- Hospital to home

and much more...

**01206 932792**

## Contact us today on:

- ☎ 01206 932792
- ✉ [colchester@rightathomeuk.com](mailto:colchester@rightathomeuk.com)
- 🌐 [www.rightathomeuk.co.uk/colchester](http://www.rightathomeuk.co.uk/colchester)
- 📘 [www.facebook.com/rightathomecolchesteranddistrict/](https://www.facebook.com/rightathomecolchesteranddistrict/)



Good

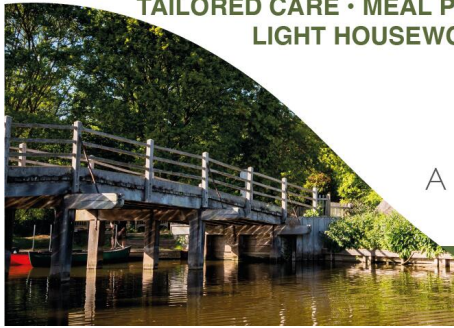




## Dedham Vale Homecare Ltd

'Care with Integrity'

**TAILORED CARE • MEAL PREPARATION • SUPPORT TO APPOINTMENTS  
LIGHT HOUSEWORK AND LAUNDRY • TRIPS OUT • SHOPPING**



Providing support, companionship & care to people in their own homes.

A bespoke service to meet identified individual needs with dignity and privacy.

www.dvhc.co.uk  
info@dvhc.co.uk 01206 918930



Tel: 01206 322674

Mob: 07732 039726

Email: nicola.pedicare@gmail.com

Web: www.pedicarefootclinic.co.uk

Also at Pedicare:

**Felicity Watts  
Reflexology**

in need of relaxation?



Please contact Felicity for an informal chat about the benefits of Reflexology and how it can help you.

T: 07432 098079

E: fjwtatsreflexology@gmail.com

**Dedicated to the care of your feet**

**Relax • Restore • Revive**

**1 Threadneedle (Main) Street Dedham, Colchester CO7 6HH**



Osteopathy and Sports Therapy/Massage Clinic in the heart of Dedham providing treatment for:

- Back pain & sciatica
- Arthritis pain & stiffness
- Neck & shoulder pain
- Trapped nerves
- Tennis/Golfer's elbow
- Tendinopathy
- All joint strains
- Muscle/ligament strains



*Dedicated to getting you better.*



**DEDHAM  
OSTEOPATHY**

**Luke Jackman Bsc Hons Ost  
Registered Osteopath**

Tel: 01206 323 239 / 07974 144593

www.dedhamosteopathy.co.uk

One hour initial appointment • Free on-site parking • Open weekdays, evening & weekends

**Dedham Parish Magazine** thanks the Advertisers for their support



# Victoria Baker PILATES

Personally designed courses to improve posture, joint alignment, movement and strength.  
Group and Individual sessions in a private, comfortable studio.

Cedar Building, Foxash Estate  
Harwich Rd, Lawford  
Colchester CO11 2LR



office 01206 322244  
mobile 07887 987280  
[www.victoriabakerpilates.com](http://www.victoriabakerpilates.com)



  
LAWFORD HOUSE POOL  
MOBILITY | WELLBEING | FITNESS

Come and enjoy a swim at  
Lawford House Pool.

Lawford House Pool, Bromley Road  
Lawford CO11 2JD

To book please go to our website  
[www.lawfordhousepool.co.uk](http://www.lawfordhousepool.co.uk)  
or call us on 07958 551161.



**Personal Training**  
**No Joining Fee**  
**Free Fitness Consultation**  
**Contact Mark**  
**07769703131**  
**[mark@fitfaff.com](mailto:mark@fitfaff.com)**

**bacp** |   
Registered Member 47972  
MBACP

**PSYCHODYNAMIC COUNSELLING &  
PSYCHOTHERAPY**  
**Patrick Lyttle, MSc PGDip (Oxon)**

Tel: 07887 982837  
Email: [patricklyttle@gmail.com](mailto:patricklyttle@gmail.com)  
[www.psychologytoday?patricklyttle](http://www.psychologytoday?patricklyttle)



# the treatment rooms

AT MAISON TALBOOTH

Spa packages | Massages  
Facials | St. Tropez tanning

Open all day, every day.  
Call to book **01206 322367** or visit  
[www.milsomhotels.com/spa](http://www.milsomhotels.com/spa)



## THE DEBBIEMILLARSCHOOL OF DANCE

CLASSICAL BALLET • TAP • MODERN • THEATRE • DISCO

**Dance classes for ALL ages & abilities**  
For fun, recreation, progressive ISTD examinations

**Toddlers  
Pre-school  
Children  
Teens  
Adults**

**Ballet & Tap  
Modern  
Jazz  
Disco/Street  
Musical theatre**



**Tel: 01206 230806      Email: [debbie@debbiemillar.co.uk](mailto:debbie@debbiemillar.co.uk)  
[www.debbiemillarschoolofdance.co.uk](http://www.debbiemillarschoolofdance.co.uk)**



All our services are free to those in need, but our costs include IT equipment, software, internet services and literacy support.

**[www.beaconhouseministries.org.uk](http://www.beaconhouseministries.org.uk)  
Bank account: 23-05-80, 24181162**

As more support services become digital, it is often assumed that everyone has access to a computer. But some do not.

Please support Beacon House, Colchester, so that we can help homeless people to access jobs, benefits and housing, or just keep in touch with families and friends.





**LANGHAM**  
PRIMARY SCHOOL

**EXPLORE** our potential  
**PIONEER** our talents  
**DISCOVER** our world

Recognised by OFSTED for a  
'welcoming environment' and a  
well planned provision which 'engages  
children's curiosity and imagination'



Langham Primary School  
School Road, Langham,  
Essex CO4 5PB  
Tel: 01206 272266  
[www.langham.essex.sch.uk](http://www.langham.essex.sch.uk)



**Dedham**  
**Church of England**  
**Primary School**


*Lifelong love of learning*

A warm welcome awaits you at Dedham Primary School. Our team of dedicated teaching and support staff, school governors, parents and community work together for the benefit of all our children.

We value an inclusive culture of learning where through a broad range of opportunities each and every child is supported and challenged to reach their full potential.

We look forward to welcoming you to our school.

Headteacher: Mr David Larnar  
[www.dedham.essex.sch.uk](http://www.dedham.essex.sch.uk)  
01206 322242  
@PrimaryDedham




preschool

30 funded hours for 3 & 4 year olds  
15 funded hours for eligible 2 year olds  
8.45am to 3.00pm (term time only)

**JOIN US FROM 2 YEARS OLD**

**OFSTED**  
**OUTSTANDING**

VILLAGE LOCATION JUST OFF THE A12, WITH A  
WONDERFUL GARDEN AND OUTSIDE CLASSROOM.



TEL : 01206 322466  
[admin@abcpreschoolstratford.co.uk](mailto:admin@abcpreschoolstratford.co.uk)  
[www.abcpreschoolstratford.co.uk](http://www.abcpreschoolstratford.co.uk)

CHARITY NO: 1159203

Open to All  
regardless of  
catchment area



From age  
2 years...



**\*\*\* Longer Opening Hours Now Available \*\*\***



[www.ardleighpreschool.co.uk](http://www.ardleighpreschool.co.uk)  
Tel: 07517 430114



Ardleigh Village Hall, Station Road, Ardleigh, Essex, CO7 7RS

# LANGHAM PRE-SCHOOL

VILLAGE LOCATION JUST 5 MINUTE DRIVE FROM:  
HIGHWOODS, MYLAND, BOXTED, DEDHAM & GREAT HORKESLEY

2yrs +

From Sept 2017: Up to 30  
free funded hours available



For more info: 07930 963638  
[www.langhampreschool.co.uk](http://www.langhampreschool.co.uk)

Come and explore...

Langham Community Centre  
School Road  
Langham  
CO4 5PA

Company no. 07127779

Charity Commission no. 1135120



Orchard Barns is a small nursery group of two unique nurseries located in the beautiful villages of Ardleigh and Stratford St. Mary offering outstanding care and education for children from 3 months to 5 years.

Come and visit us, it really is the best possible way to learn about us and get a true feel for these exceptional nurseries.



CALL FOR MORE INFORMATION

01206 231911 for Ardleigh

01206 323093 for Stratford

[www.orchardbarns.co.uk](http://www.orchardbarns.co.uk)

email: [info@orchardbarns.co.uk](mailto:info@orchardbarns.co.uk)

## DEDHAM TENNIS CLUB



2019 membership starts  
from 1st March

To become a member, please visit our  
website [www.clubsparks.org.uk/dedhamtc](http://www.clubsparks.org.uk/dedhamtc)



JUNIOR	£5
SENIOR WEEKDAY	£72
INDIVIDUAL	£106
FAMILY	£180

For more information contact:  
DEDHAM LAWN TENNIS CLUB  
THE DRIFT, DEDHAM,  
COLCHESTER, ESSEX,  
CO7 6AH

Email: [dedham-tennis-committee@googlegroups.co.uk](mailto:dedham-tennis-committee@googlegroups.co.uk)

Mobile

## fresh fish shop



 Dedham High street

THURSDAY 2pm - 2.30pm

Straight from Lowestoft fish market!  
A wide selection of fresh fish, smoked  
fish and seasonal shell fish.

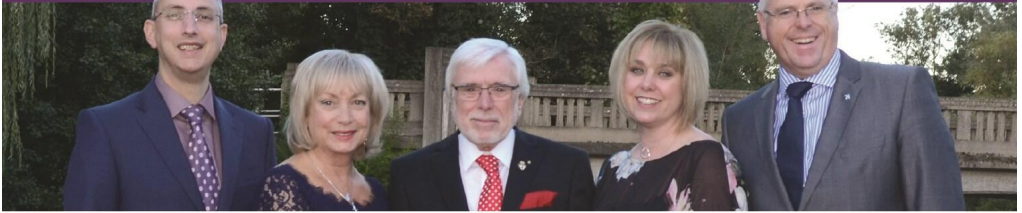
**Every Thursday**  
**2pm- 2.30pm**

by the Dedham memorial

Deliveries also available in the  
Dedham area on Thursdays.



HUNNABALL  
Family Funeral Services



Here **whenever** you need us

Funerals | Memorials | Pre-paid Funeral Plans

**Hunnaball of Colchester**  
York House, 41 Mersea Road,  
Colchester CO2 7QT  
**01206 760049**

**Geo. Paskell of Manningtree**  
19a High Street,  
Manningtree, CO11 1AG  
**01206 396709**

[www.hunnaball.co.uk](http://www.hunnaball.co.uk)

## Riverside Designs

*for all your interior design, hand finished blinds,  
curtains and soft furnishings. Based in Dedham.*

**Tel: 07966 310 206**

**email: [enquiries@riversidedesigns.co.uk](mailto:enquiries@riversidedesigns.co.uk)**



## Wendy's Curtains

Professionally made to measure  
curtains, roman blinds and soft  
furnishings, with a wide range of  
fabric samples.

☎ 01206 395996  
☎ 07966 718 414  
✉ [info@wendyscurtains.com](mailto:info@wendyscurtains.com)  
🌐 [www.wendyscurtains.com](http://www.wendyscurtains.com)

## Diana M Cleaning Home and Office Cleaning



07925624123  
[dianamarinova61@yahoo.co.uk](mailto:dianamarinova61@yahoo.co.uk)



Steve Hutley (BCCSDip.CanBhvPrac)  
DOG BEHAVIOURIST  
Website: [www.stevhutleydogrehab.co.uk](http://www.stevhutleydogrehab.co.uk)  
Facebook: 'Rehabilitation and Training'  
Email: [steviehut@yahoo.co.uk](mailto:steviehut@yahoo.co.uk)

DOES YOUR DOG POSSESS THE FOLLOWING BEHAVIOURAL PROBLEMS?

Dog on dog aggression?; People aggression?;  
Lead Pulling?; Constant barking?; Fears or phobias?;  
Jumping Up?; Separation Anxiety?; Resource Guarding?

If you answered YES to ANY of these questions, then please don't hesitate!

Give me a call on: 07859879559.

**BIRKFIELD COMPUTER SERVICES**  
also offering  
**SENIOR COMPUTING SERVICES.**

Help for the more mature user.  
We can supply refurbished systems. |  
Desktops/Laptops repaired.  
Problems sorted, bugs removed.  
Systems speeded up - **help given.**  
W10 can look and run like Windows 7



Call Michael Hockley

01206 298479

[birkfield@btinternet.com](mailto:birkfield@btinternet.com)

Julie Wensak  
Find us on facebook.




**The House & Hound Sitter**  
Based in the heart of Constable Country

A caring, professional service looking after your pets in their own home. Including dog walking, cat feeding etc  
Live in or live out, with the peace of mind that your home is in safe hands.

For further details and to discuss your requirements  
Contact me on 07805 927831  
[julie@houseandhound.co.uk](mailto:julie@houseandhound.co.uk)

[thehouseandhoundsitter.co.uk](http://thehouseandhoundsitter.co.uk)

**Essex & suffolk**   
**PEST SOLUTIONS**

Your local pest control experts  
for home & business

- Free advice, fast response
- Highly accredited (NPTA)
- Fully qualified & insured
- Discreet — unmarked vehicles

Tel: 01473 328092 (Holbrook)

Email: [info@eandspestsolutions.co.uk](mailto:info@eandspestsolutions.co.uk)

**PENROSE VETERINARY GROUP LTD**

Veterinary Surgeons

Peelers End  
Upper Street  
Stratford St Mary  
CO7 6LW  
(01206) 323414

70 Brinkley Lane  
Highwoods  
Colchester  
CO4 9XE  
01206 842608

Appointments daily, including weekends and late nights  
24 hour veterinary care  
[www.penrosevets.co.uk](http://www.penrosevets.co.uk)



**PLUMBING AND HEATING LTD**  
Established 1988



**NATURAL GAS • LPG • OIL • RENEWABLES**

- FULL INSTALLATIONS
- BREAKDOWN
- SERVICING
- SYSTEM MAINTENANCE
- SYSTEM DESIGN

FOR ENQUIRIES CALL  
IAN - 07885228646  
OR  
JOHN - 07500956984  
OR VISIT US AT  
[www.icpplumbingandheating.com](http://www.icpplumbingandheating.com)

**Richardson  
.....&.....  
Rothwell**



**bpec**



184271

Plumbing and Heating Limited  
Unit 1, Manningtree Road, Dedham

**Make us your first call for plumbing & heating requirements.**

We are your reliable local plumbers. We undertake all plumbing works from heating systems and bathroom suites to solar heating, air source & ground source heat pumps.

We offer a free quotation service so please call us to find out more details.

Tel: 01206 323732 Fax: 01206 323735 email: [steve@richardsonandrothwell.co.uk](mailto:steve@richardsonandrothwell.co.uk)

Worcester-Bosch • Baxi-Potterton • Chaffateux • Main  
**24hr CALL OUT**



  
**Jackson**  
**Plumbing & Heating**  
01206 322063  
mobile: 07834 612009  
01473 214215



[www.jacksonplumbing.co.uk](http://www.jacksonplumbing.co.uk)



GRANTS AVAILABLE OAP DISCOUNTS

Glowworm • Vaillant • Ariston • Ferroli • Biasi • Sime • Ideal

## JP WILSON PLUMBING AND HEATING

Gas Engineer  
Bathroom Installation  
Boiler Installation  
Faults & Servicing  
Landlord Safety Certificates  
Unvented Systems  
Fully Insured

TEL: 01206 322141  
MOBILE: 07445 270703  
EMAIL: jon@jpwplumbing.co.uk  
www.jpwilsonplumbingandheating.co.uk

Chartleigh  
East Lane  
Dedham  
Essex CO7 6BE



## S. J. Smith PLUMBING AND HEATING ENGINEERS

From an extra radiator  
To a full heating system



- \* Boiler changes
- \* Bathroom suites
- \* Aqualisa, New Team & other showers
- \* Electric showers
- \* All heating and plumbing repairs

FREE ESTIMATES  
CORGI REGISTERED

**COLCHESTER  
843 493**

## A.Slocombe General Builder

Hard Landscaping,  
Roofing and Property Maintenance

Brickwork, Blockpaving Drives, Carpentry  
No job too small, for free friendly advice  
and estimates phone

**01206 322 884 / 07786 871 364**

## LITTLEBUILD BRICKWORK

N.V.Q / City & Guild Qualified

All aspects undertaken:  
New Builds, Extensions, Garden Walls  
Repair, Block Paving, Slab Work

**Call for a free quote today  
Tel: 07881 095818  
Email: liddleiain@hotmail.com**

## P.J. SAMPSON BUILDERS

COMPLETE BUILDING SERVICE

30 Years' Experience

Tel: 01206 230619

66 Tile Barn Lane Lawford

**Brick work Specialist  
Painting & Decorating  
Plastering and Carpentry  
Plumbing & Electrics  
Roofing**

**All Property Maintenance**



# ORWELL ELECTRICAL LIMITED

95 School Lane, Stratford St. Mary  
Suffolk, CO7 6LZ  
Tel: **01206 322969**  
Mob: **07534424493**  
E-Mail: [info@orwellelectrical.co.uk](mailto:info@orwellelectrical.co.uk)  
[www.orwellelectrical.co.uk](http://www.orwellelectrical.co.uk)



Electrical Safety  
Register



*Call us for a free quotation*

- Electrical Installations
- Electrical Testing
- Lighting Design
- Fire Detection Services
- 24-Hour Call out
- Response Maintenance



**Call for a free quotation**

Office: **01255 436410**

Mobile: **07939 554197**

Website: [www.spenceelec.co.uk](http://www.spenceelec.co.uk)

**24 Hour Emergency Call Out**

**All Electrical Work Undertaken  
Domestic & Commercial**

ECA / NIC EIC Approved Electrical Contractor  
Fully Insured. New Installation.  
Rewires and Upgrades.  
Additional Sockets and Lighting.  
Garden / Garage Power and Lighting.  
Full Electrical Testing and Inspection Service.  
Domestic Electrical Fault Finding and Repair.

**Prompt Reliable Service**



All aspects of building work e.g. extensions, removal of walls etc, plastering, tiling, electrical & plumbing are undertaken as we project manage your kitchen from start to finish.

# HUNTERS BROOK

*The Kitchen & Bedroom Specialist*

**01279 442432**

[sales@huntersbrook.co.uk](mailto:sales@huntersbrook.co.uk)

"Designers & fitters covering Essex & Suffolk"

## Daniel Williams ELECTRICIAN



- Local Service
- Fuse Boards
- Rewires
- New Builds & Extensions
- Sockets & Lighting
- Testing & Fault Finding
- Kitchens & Bathrooms

**07818 487419**  
Anytime

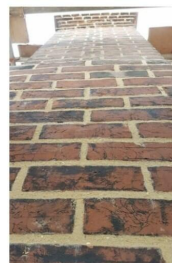
**01255 861791**  
Evenings

daniel.electrical@btinternet.com

## Ravenhill Restoration Ltd

*Restoration Carpentry specialising in  
historical timber framed buildings*

- \* Bespoke oak frame carpentry
- \* Restoration structural repairs to Oak frame buildings
- \* A family run business
- \* Historical brickwork repairs and lime pointing
- \* Barn conversions
- \* Rotten timber removal and replacement
- \* Masonry crack stitching



*We have a passion for working to restore historical buildings. Previous projects include St Paul's Cathedral, Westminster Abbey, Hadleigh Deanery and Bury St Edmunds' Cathedral.*

Tel: Paul Ravenhill - 07595 900 539  
ravenhillrestoration@gmail.com  Find us on Facebook

## Nigel Bruce Industrial & Domestic ELECTRICIAN

'The Swift', Upper Street,  
Stratford St Mary,  
Colchester CO7 6JW

Tel: (01206) 322 751

## ARDLEIGH CHIMNEY SWEEP SERVICES



- Traditional and Power Sweeping
- CCTV Inspections
- Safety Certificate Issued
- Fully Insured

ANDREW SMITH

**01206 231718 • 07845 249820**

31 HARWICH ROAD, LAWFORD, MANNINGTREE, ESSEX CO11 2LS

## MJS SYSTEMS

Audio Visual Security



- CCTV
- Intruder Alarms
- Security Lighting
- Door & Gate Entry
- Aerials & Satellites
- Home Entertainment

For a Free, No Obligation Quote

Please Contact Us on: 01206 322071

07778 931357

[www.mjssystems.co.uk](http://www.mjssystems.co.uk)



# DIRECT DECKING

Making more of  
your outdoor space

Stunning, high-end  
**Composite Decking**  
made from 90% recycled  
hardwood & plastics

- ✓ **No** staining or painting
- ✓ **No** warping
- ✓ **No** rot, mould or algae
- ✓ **30** year  
Warranty

**FREE  
GIANT  
JENGA**

Orders over £200\*  
QV09; CODE:  
PA08

**FREE  
LOCAL  
DELIVERY**

Orders over £200 to  
postcodes CO,  
CM & IP

Open Monday to Friday, 8:30am to 4:30pm

**0800 6123 998**  
directdecking.co.uk



\*While stocks last

**Collier & Catchpole**  
COLLIERCATCHPOLE.CO.UK

**BUILD WITH COLLIER'S**

**A NEW BUILDERS' MERCHANT HAS ARRIVED IN LAWFORD**

MANNINGTREE RAILWAY STATION  
A137 TO IPSWICH  
STATION ROAD B1352 TO MANNINGTREE  
COX'S HILL  
WE ARE HERE

**WE STOCK**

- BRICKS & BLOCKS
- ROOFING
- FENCING
- TIMBER & INSULATION
- BARK & TOPSOIL
- LANDSCAPING
- DRAINAGE
- PAINT

**Manningtree Body Repair Centre**

**Riverside Avenue West  
Lawford  
Manningtree  
Essex  
CO11 1UN**

**Tel / Fax: (01206) 393 191**

All Vehicle Body Repairs & Refinishing work undertaken including:

- Insurance Work, MOT welding, Panel Beating and Spraying
- Assistance given to "Non-Fault" Third Party Insured
- Collections and Delivery

**DEDHAM'S EAGER BEAVER  
HANDY MAN SERVICE**



- \* Grass Cutting
- \* Hedging
- \* Garden Maintenance

**ANY JOB YOU HATE  
WE CAN DO**

**Ring Phillip: 07939 250 018  
After 6pm 322 554**

**Andrew Ablett  
Servicing & Repairs**

Foxash Workshop,  
Foxash, Lawford, CO11 2LR

**TEL: 07917 223274**

Servicing, Repairs, Diagnostics  
Cars - Vans - Motorcycles



**Tree Surgeon**

**Blake Tree Care**  
M: 07515 288736  
O: 01787 228341  
Providing excellence in:  
[info@blaketreecare.co.uk](mailto:info@blaketreecare.co.uk)  
[www.blaketreecare.co.uk](http://www.blaketreecare.co.uk)

- Tree Felling - Canopy Reduction - Hedge Cutting
- Tree Shaping and pruning - Stump Grinding
- Pollarding - Emergency Storm Damage
- Free Consultation for Small and Large Jobs

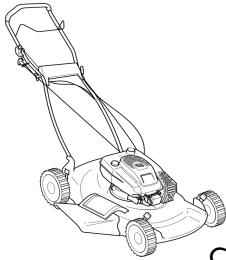




**HORIZON  
LANDSCAPES  
EAST ANGLIA LTD**

**Design, Construction, Restoration, Maintenance**

Email: [info@horizonlandscapesea.co.uk](mailto:info@horizonlandscapesea.co.uk) Tel: 01206 322646  
[www.horizonlandscapesea.co.uk](http://www.horizonlandscapesea.co.uk)



**Richard Kimberley Services**  
**Lawn Mower Service and Repair Centre**  
Rotary pedestrian, ride-on mowers, rotavators.  
Shear sharpening service. Welding expert.  
Proven workmanship. Engineering workshop established  
over 30 years.  
Competitive, fast service, collection and delivery by arrangement.

Telephone: 01206 230964  
Email: [rks@richardkimberleyservices.co.uk](mailto:rks@richardkimberleyservices.co.uk)  
88 Hungerdown Lane, Lawford, Manningtree, CO11 2LY

Your local  
**tree specialist**



SPECIALIST TREE SURGERY • ARBORICULTURAL CONSULTANCY

**07841 623027**  
**[www.jftreespecialist.com](http://www.jftreespecialist.com)**



FULLY INSURED AND COUNCIL APPROVED  
FREE ESTIMATES AND EXPERT ADVISE

01206 231720 • [INFO@JFTREESPECIALIST.COM](mailto:INFO@JFTREESPECIALIST.COM)

**What we do**

- ✓ Tree Surveys
- ✓ Planting and Aftercare
- ✓ Fruit Tree Pruning
- ✓ Felling and Dismantling
- ✓ Tree Monitoring
- ✓ Hedge Cutting
- ✓ Stump Removal
- ✓ Fencing
- ✓ Landscaping
- ✓ Logs and wood chip supplied
- ✓ Mobile sawmill service
- ✓ Mowing contracts
- ✓ Crown Reduction, Lifting, Thinning and Cleaning

**J.F. TREE**  
SPECIALIST LTD 



**HILL FARM**  
LANDSCAPES  
*Landscaping & Fencing Contractors*  
**01206 303608**  
*www.hillfarmlandscapes.com*



**Rix Petroleum**  
East Anglia

*Your local, independent fuel supplier*



Heating Oil



Aga Cooker Fuel



Gas Oil & Diesel



Lubricants & AdBlue®



2018 Gold Trusted Service ★★★★★ feefo®

 [www.rix.co.uk](http://www.rix.co.uk)

 01953 457057

## Leisure Hire



### Marquee and Equipment Hire

- ♦ Marquees erected on most surfaces ♦
- ♦ Awnings ♦ Walkways ♦
- ♦ Extensions to Buildings ♦ Linings ♦
- ♦ Lighting ♦ Furniture ♦
- ♦ Flooring & Staging ♦ Heating ♦

**Summer or Winter**  
**Weddings Anniversaries Corporate**

*Brochure upon request*

**(01206) 242 196**  
**leisurehire@gmail.com**



**HOLLAND ROOFING**  
EAST LTD

We have been repairing and installing new roofs for over 35 years. We believe we offer one of the best services for local domestic and commercial customers.

Holland Roofing East Ltd is a fast-expanding roofing company based in Essex, also covering areas such as Norfolk, Suffolk, London and Kent.

Our Services include:

- ♦ Flat Roofing
- ♦ Liquid Roofing Systems
- ♦ Green Roof Systems
- ♦ Slating & Tiling
- ♦ Roof repairs
- ♦ New Roofs
- ♦ Roof Cleaning Services
- ♦ Fascias, Soffits & Guttering

Our aim is to provide a consistent and comprehensive service to our clients by incorporating modern techniques, high-quality materials and years of expertise and experience in the roofing industry.

For a **FREE** quotation please

**CALL US ON: 01206 616710**

or  
**EMAIL US: info@hollandroofingltd.co.uk**



## CHARTERED ACCOUNTANT

Dedham based

**Accounting & Tax Services and Financial Consultancy  
for small businesses  
Affordable rates**

Accounts, self assessment, corporation tax, Quickbooks & Sage accounting software etc.

Call Philip Strangward on 01206 584913 or 07880 550000  
for free initial consultation  
[www.philipstrangward.co.uk](http://www.philipstrangward.co.uk)

## R J Woods & Co Accountants

- Accounts
- Self Assessment Returns
- Company Tax Returns
- VAT
- Book-keeping
- Tax Planning
- Payroll

Confidential advice  
Free initial consultation  
Call Rob or Tracy Woods

**Tel: 01206 322 604**

Email: [info@rjwoodsandco.com](mailto:info@rjwoodsandco.com)

Website: [www.rjwoodsandco.com](http://www.rjwoodsandco.com)

Joined up  
Legal  
Services

for you

and your  
family

When it comes to your legal needs, one benefit of working with FJG is that we offer a full range of legal services. We can help with Conveyancing, Equity Release, Family Law, Planning, Personal Injury and Wills, Life Planning & Probate providing joined up thinking that keeps all of your legal affairs with one trusted firm.

**Contact us today to make an appointment. Legal advice with a conscience.**



FISHER  
JONES  
GREENWOOD  
SOLICITORS

Fisher Jones Greenwood LLP, Charter Court,  
Newcomen Way, Colchester Business Park,  
Colchester, Essex, CO4 9YA  
Offices across Essex and London

**01206 700585**

[www.fjg.co.uk](http://www.fjg.co.uk)

[enquiry@fjg.co.uk](mailto:enquiry@fjg.co.uk)

## THE SUN INN



A REFUGE THAT'S EASY TO FIND BUT HARD TO LEAVE,  
WHERE TIME SLOWS DOWN IN THIS RUSTIC RETREAT.

The Sun Inn, High Street, Dedham, Essex CO7 6DF

Telephone: 01206 323351

[www.thesuninndedham.com](http://www.thesuninndedham.com)



MAN CAVE  
*Barbers*

07751517383

1 Threadneedle Street  
Dedham  
C076HH

'Walk Ins Welcome'

Helen Sims Flowers

BEAUTIFUL FLOWERS  
FOR ALL OCCASIONS



T: 07899 061840

E: [helensimsflowers@btinternet.com](mailto:helensimsflowers@btinternet.com)

[www.helensimsflowers.co.uk](http://www.helensimsflowers.co.uk)





clinic1  
facial aesthetics

by Julia Foster

MSc, RM, SCPHN, Aesthetic Nurse

- Anti-wrinkle injections
- Dermal Fillers
- Body Contouring
- Aqualyx fat dissolving
- Teeth grinding - Facial Slimming
- Nefertiti Neck lift - Necklace lines
- Tear Trough correction
- Nonsurgical rhinoplasty
- Facial contouring packages
- Gift vouchers available

20% OFF  
Quote code  
Dedham

T&Cs apply

07973 345053 

www.clinic1.co.uk 

clinicneessex 

juliacfoster@yahoo.co.uk 

Clinic One, Clarkes farm, Harts Lane, Ardleigh, CO7 7QH 



# Concerned about SECURITY?

Would you like a FREE Security Review?

## HEWES



Hewes, established in 1961, is a National Security Inspectorate Gold installer and can install new or upgrade your system:

- CCTV Supply & Installation
- Intruder & Fire Alarms
- Access Control & Gate Automation
- 24 hour Monitoring & Police Response

☎ 01206 807218

HewesGroup.com



# DEDHAM VALE TREE SURGERY

NPTC qualified, fully insured  
 24 hr emergency tree work  
 Hedge maintenance and reduction  
 Logs, kindling and woodchip supplied  
 Stump grinding



All tree work undertaken  
 Crown reduction and shaping  
 Crown lifting and thinning  
 Pruning and pollarding  
 Felling, sectional dismantling

Specialising in big trees in delicate situations

info@dedhamvaltetreesurgery.co.uk  
 www.dedhamvaltetreesurgery.co.uk

mobile 07756 811098  
 phone 01206 323056

## HOLIDAY COTTAGE

Long Road East  
**DEDHAM**

Weeks, Weekends & Between Houses.

Tel. 01206 323 345 / 0797 9757 470

www.holidaycottagededham.co.uk

E Mail owlbarn@live.com



# Cakes by *Abi*

[www.abisartonicakes.webs.com](http://www.abisartonicakes.webs.com)

*Creative bespoke cakes  
which taste as stunning as they look.*

*Formerly a Pastry Chef at Claridge's specialising in  
stylish cakes and patisserie for all occasions. Based in Dedham.*

*Mobile: 07870217003 Email: abisarton@gmail.com*



**fiducia**

wealth management & wealth preservation



*fidelity*  
*fiduciary* *fiducia*  
*sides*

***Fiducia Wealth Management is a Chartered, award-winning, independent wealth manager and we provide high value advice for individuals, business owners and trustees on investments and all aspects of financial planning.***

***Our advice is provided on a person to person basis and is always confidential.***

If you believe your planning could benefit from a New Year review, do call Louise and she will be delighted to arrange a meeting with Gordon, Susie, Josh, Daniel or Michael.

Fiducia Wealth Management Limited,  
Dedham Hall Business Centre, Brook  
Street, Dedham, Colchester, CO7 7AD

T: 01206 321045  
E: [email@fiduciawealth.co.uk](mailto:email@fiduciawealth.co.uk)  
W: [fiduciawealth.co.uk](http://fiduciawealth.co.uk)

Authorised and regulated by the Financial Conduct Authority. FCA No. 408210

**THE  
Munnings  
ART MUSEUM**  
DEDHAM - ESSEX

1 April - 1 November 2020  
2pm - 5pm, Wednesday to Sunday  
Bank Holidays 11am - 5pm

- Adults £8 (inc seniors)
- Children £1
- Concessions for students and National Art Pass holders
- Group bookings welcome
- Car and coach parking
- Café and shop

Reg. charity no. 310671

*Yours  
with love  
AJ*

*An exhibition based on the personal  
correspondence of Alfred Munnings*



[www.munningsmuseum.org.uk](http://www.munningsmuseum.org.uk)  
[enquiries@munningsmuseum.org.uk](mailto:enquiries@munningsmuseum.org.uk) 01206 322127