

DEDHAM

PARISH
MAGAZINE



June 2020

Marjorie West ~ Our local hero



DEDHAM PARISH MAGAZINE

JUNE 2020

The deadline for magazine entries is the 10th of the month

DEDHAM PARISH CHURCH

dedham-and-ardleigh-parishes.org.uk

Antony Wilson *Vicar*

☎ **323 919**

Merv McKinney *Assistant Minister*

☎ **323 919**

PARISH OFFICE

Claire Arculus *Parish Administrator*

☎ **322 136**

Charlotte Parker *Assistant Parish Administrator
& Safeguarding*

Assembly Rooms ☒ stmaryda@gmail.com

High Street, Tuesday 9-11am

Dedham CO7 6HJ Thursday 11-1pm

CHURCH WARDENS

Suzanne Woods ☎ **01255 870640**

Peter Wilson ☎ **323 179**

MUSIC

Antony Watson *Director of Music*

☎ **322 425**

DEDHAM PARISH MAGAZINE

Editor

Charlotte Parker ☒ dedhameditor@gmail.com

Advertising

Sara Marshall ☒ dedham.advertising@gmail.com

MAGAZINE CONTENT

2. **Contacts/content**

3. **Coronavirus info**

4-5 **Viewpoint**

6. **SEWINNHS**

7. **Jake 3D Printing**

Organisations & Features

8-9 **Christian Aid Everest climb**

10-15 **Dedham Grammar School**

16. **Gardening notes**

17. **Local clubs**

18. **Medical Matters**

19. **Dedham Parish Council**

20-21 **What's on**

2244 ADVERTISING

From the register:

Burial: Daniel Blyth Wright

24th March 2020



Follow us on facebook

Dedham and Ardleigh parishes

If you would like a lift to church contact **Ann Shaw ☎ 322 192**

or **Ruth Higginson ☎ 322 598**

Can we help? Sometimes things in life can just get too much to cope with on your own... **Psalm 34:18:** The Lord is close to the broken-hearted and saves those who are crushed in spirit. If you would like some support or know of any one who would,

please contact: Ann Shaw ☎ **322 192** or Christine Mingay ☎ **230 723**

If you have been bereaved or know of anyone who has, please contact

Vee Druit ☎ **322 000** or Ruth Higginson ☎ **322 598**

First Steps: Want to get back involved with church but don't know where to start?

Contact Liz and John Reed ☎ **323770**

**STAY
ALERT**



**CONTROL
THE VIRUS**



**SAVE
LIVES**



UK Government

NHS

CORONAVIRUS
STAY ALERT
TO STAY SAFE

Go to [gov.uk/coronavirus](https://www.gov.uk/coronavirus)

STAY ALERT ▶ CONTROL THE VIRUS ▶ SAVE LIVES

Dedham and Ardleigh



HELPLINE

during the Coronavirus pandemic

01206 322025

Please leave a message with your name, phone number and what you would like help with and someone will get back to you the same day. *For example you may like help to get shopping, or a prescription, or just to have a friendly chat with someone!*



Giving beats taking every time

Our cover this month features Marjorie West who has single handedly raised over £37,000 for the NHS by steadily walking around her home. Marjorie was inspired by fellow WW2 veteran Captain Tom.

Marjorie's story was picked up by the BBC who came and featured Dedham as part of their coverage of the VE Day Stay at Home coverage. *Thank you to everyone who helped to decorate our villages and welcomed the camera team to join in with their celebrations – especially everyone in East Lane!*

The BBC wanted to explore what we could learn from the example of people like Marjorie and how their character and approach to life might inspire us today as we face our own battle against COVID-19.

Marjorie has reminded me that giving is stronger than taking. Do you recall the way that the Prime Minister, upon his

return to work from intensive care, described COVID-19 as an unexpected and invisible mugger? The intent of a mugger is to take, nothing more nothing less, to take what belongs to someone else for themselves. COVID-19 has been taking lives, livelihoods, security and in some cases hope away from us since it came to our country.

But in her walking Marjorie has been giving to others, she has resolutely put one foot in front of the other and raised a huge amount for the NHS in sponsorship.

Her giving is mirrored across the country and in our community by the countless acts of kindness that are motivated by love. Love gives, and love wins. Giving is stronger than taking. It's through giving that we are beating this invisible mugger.

But there's more to giving even than that - not only does giving bless the receiver but it also blesses the giver

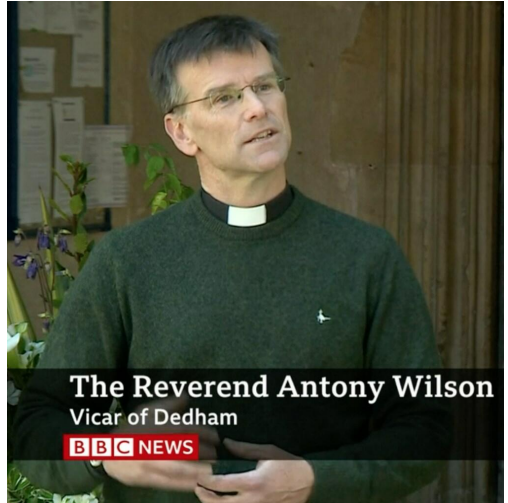
too. Writing to the church in Ephesus St Paul says: *'You yourselves know that these hands of mine have supplied my own needs and the needs of my companions. In everything I did, I showed you that by this kind of hard work we must help the weak, remembering the words the Lord Jesus himself said: 'It is more blessed to give than to receive.'* Acts chapter 20 verses 34-35.

Giving is good for you! It makes you feel good when you give, and that's great too!

I hope that as we emerge slowly from the depths of this pandemic we will be wiser, kinder and more committed to giving than ever before.

Giving beats taking every time.
Take care,

Reverend Antony



SEWING4NHS

A Good News story: Shortly before the coronavirus pandemic and we went into lockdown, 30 people including myself, had moved into 23 new homes at Cannock Mill Cohousing in Old Heath, Colchester. We had started to arrange communal social activities, such as eating together a couple of times a week in the old, timbered watermill, our community house. Covid-19 brought a halt to plans for this new cohousing community: like everyone else, we had to keep 2m distance from each other, and several of our residents self-isolated in their new homes.



Linda cutting out scrubs

Social media came to the rescue when a neighbour saw a call to help Colchester General Hospital by making ‘scrubs’ for medical staff working under extreme pressure. Another of my neighbours co-ordinated a ‘working party’ and ordered the fabric (115 metres!). This had to be pre-shrunk by washing in several household’s washing machines, then dried over balconies and banisters. Residents working in their own homes formed an ‘assembly line’ to make copies of patterns onto paper, cut out tops and/or trousers, pockets and neckbands, while sewing machine owners stitched the parts together.

Others ironed, put drawstrings into waistbands, and did final finishing and pressing. Technology was invaluable, as all communication between us had to be by email or messaging. Homemade cakes were provided, and those residents not able to help practically contributed to the cost of the fabric.



Work in progress & the finished article

After 10 days of frantic work by some 15 individuals, 32 sets of scrubs were proudly delivered to the Hospital. Between us all the cost of material was donated, and we gave a generous donation to the Colchester & Ipswich Hospitals Charity Covid-19 Staff Wellbeing Appeal.. As Eve, one of the machinists, said: “....not a global supply chain, but good old-fashioned community collaboration”. And it was fun!

by Linda Redlich

Jake Supports Key Workers the 3D Way

When Jake Lay-Flurrie was just 12 years old he was inspired to buy a 3D printer kit and build it at home from scratch. This has stood him in good stead as he now feels well placed to troubleshoot any difficulties that might arise. With his interest in design and engineering, the possibilities of a 3D printer seemed really exciting. For his GCSE project, he designed and built a prosthetic hand! Since then he has taken to designing and making products such as personalised gifts and Molle patches which he sells online from his home.

When Covid-19 forced most people to shut down and stock up on loo rolls, Jake decided to explore how he might be able to help. He found a group making medical supplies – specifically protective visors for medical staff that would be circulated by a central organisation. He set about making the headbands and had 150 ready to go when the organisation dropped from view.

Undaunted, Jake sourced the Perspex visor shields and now makes the entire thing. He realised he would struggle to pay for all the materials so he started a Go Fund Me page and raised enough to really get going without costing the recipients anything.

With 800 visor shields and more headbands in production Jake has been able to support carers and staff at Elm

Park (head injury unit in Ardleigh) and Manningtree Care Home with 60 visors each and more being distributed daily to local care providers.

When the Ardleigh Parochial Charities heard of the marvellous work this young man was doing, they provided him with a second 3D printer to support this vital work which benefits us all. Jake's dream is to turn his passion into a career.

I am sure that with young people like Jake, our future is in safe hands.

Check out his website
3dprintingwithjake.co.uk

Jake is now working on a non contact door opener...



Everest is
8,848m high
We achieved
14,657m
in total
which is
amazing!
We have
raised £2000
so far!



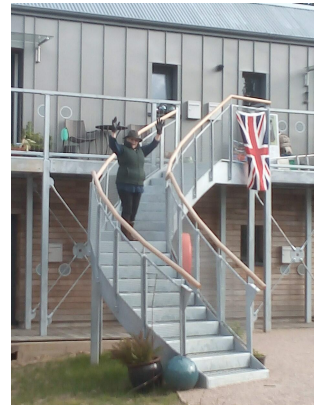
Well done to everyone who took part in our challenge to climb the Three Peaks at home for Christian Aid week.

Our aim was to climb 3400m and we did much better as you can see!



The Marshall family
Managed a total of 3,106m

Alice was the star of the family completing 1,109m!



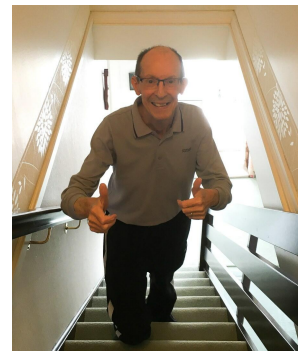
Linda Redlich



The McKinney's raised £110



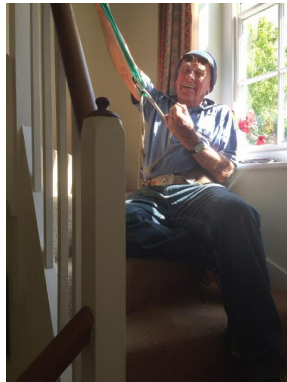
8 Susan Carne



Jim Craigie



Christine Volkmann and mum. My Mum did 1,055 m in total and I did 970 m. More than we thought we'd do... especially Mum was amazing, she said the lock-down is really getting to her, and she decided to walk the staircase an extra ten times a day, 30 times instead of 20



Belayed to the banisters; Finish on Fen Lane £160

Lynne Al-Sad raised £160 , completing 500 metres



David and Vee Druitt Climbed 1085 metres, the equivalent of Snowdon

Molly representing the Arculus family

The Dedham Grammar School

For photographs and information I am indebted to Charles Clover, Chris and Emma Wheeler and Howard Bridge.

The Grammar School was founded in 1571 by a prominent Dedham clothier, William Littlebury to provide free education for twenty poor boys from Dedham, Ardleigh, Great Bromley, Bradfield and Stratford St Mary and soon began to admit some fee-paying pupils as well. In 1575 the school was granted a charter from Queen Elizabeth I and that explains why the space in front of the building is still known as Royal Square. The school's statutes describe how strictly it was run with long hours and few holidays. The boys' parents were expected to provide them with paper, ink, candles and a bow and arrows. Shooting practice took place on Archery Piece near the corner at the eastern end of the High Street, off what is now Brook Street and there were sports such as ball games and wrestling on the adjacent Camping Close. The Grammar School provided a classical higher education for boys destined for university, which was unsuited to the needs of many poor scholars; so in 1599 another clothier, Edmund Sherman, made provision in his will for an English or Writing School (the present Shermans) to teach the 3 Rs.

The Grammar School appears to have gone downhill after 1662, when the folio recording its statutes, ordinances and proceedings comes to an end, and headmasters came and went in swift

succession but then its fortunes revived dramatically. During the eighteenth century there was a fruitful collaboration between two outstanding headmasters, the Rev. Thomas Grimwood at the Grammar School and William Colchester, who took over at the English School in 1730 and stayed nearly 43 years. Grimwood, who was appointed to the Grammar School in the same year at the age of twenty-four, was there for 48 years and his son, who was headmaster when John Constable was a pupil, followed him for another 20. Handsome new buildings for both schools were put up in the 1730s, evidently to the designs of the same master mason. Both are covered with the names and initials of the pupils carved into the brickwork, a practice evidently condoned by authority. Well House, which provided accommodation for boarders, has a Latin inscription reading "Thomas Grimwood, Master of this School, 1732". It is thought to have been built slightly later than the Headmaster's House (the present Old Grammar School) facing the square, so as to connect it with an earlier timber-framed schoolroom to the east (demolished c.1920) on what is now the front garden of the Beech House. The boys had dormitories on the top floor of the headmaster's house and the prefects slept above the old schoolroom.

In its heyday during the eighteenth and nineteenth centuries the Grammar School with this long range of three combined buildings must have dominated the centre of Dedham and

the social and commercial life of the community. Its success is reflected in the architecture of the High Street, where many of the late medieval houses belonging to well-to-do residents, whose sons were among the pupils it educated, were given fashionable new Georgian fronts. Sheldrakes opposite the school is said to have been its tuck shop. An extra schoolroom on Frog Meadow was added by headmaster Dr Gerald Thompson Lermit in 1868 to accommodate the growing number of pupils and cater for the increased demands of science in the curriculum at that time. A few years earlier a cottage on Royal Square was replaced by Duchy House described in a later legal document as “the hospital”, suggesting that it was the sanatorium for the Grammar School.

Just before the Christmas holidays in 1875, when there were 90 boys on the school roll, there was an outbreak of scarlet fever in Dedham. Dr Lermit reacted swiftly and stopped the return of the boys until he had arranged alternative accommodation for them all at Dovercourt, where lessons carried on as usual. This costly, protective isolation was successful and the disease did not spread. However other problems were looming. The Endowed Schools Act of 1869, set up to regulate existing Grammar Schools, had required the English School to be replaced by a new Boys’ Elementary School in Crown Street (now the Old Schoolhouse on the corner of Parsonsfield), which was built in 1882 and cost £712 - 10s. A considerable outlay on sanitary works



A print by Alfred Montague showing the Grammar school in 1839. The gate in the south-east corner of the square led to the school playing field. The cottage beside it was replaced in the mid nineteenth century by Duchy House.



Members of the Lermitt family on the doorstep of the Grammar School in the 1860s. Note (far right) the corner of the recently-built Duchy House

and other improvements to the Grammar School's property was also needed. Then, after an outbreak of diphtheria, the water supply was found to be impure and a new artesian well had to be sunk where the pump still stands. This was of great benefit to the community, which had free use of it with the Parish Council paying a shilling a year in rent. However for the Grammar School it was the final blow. So much heavy expenditure had caused an unmanageable debt and on the resignation of the Headmaster, the Rev. William Corbett in 1889, the decision was taken to close down for the time being. The Dedham Curate continued

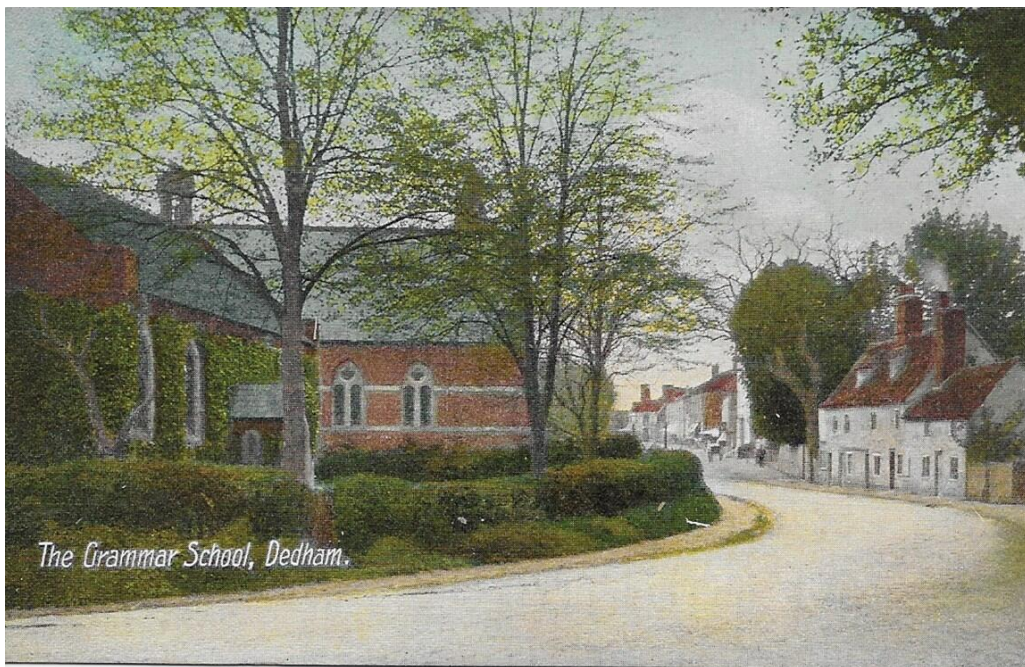
teaching the few boys left until Christmas 1893 but the school never re-opened.

The building was let to a succession of tenants until 1906 and then left empty. By the 1920s it had become The Old House Hotel and from 1937 to '49 it was the home and antique shop of the Hon. Mrs Stella Hamilton, mother of the cookery writer Elizabeth David. Since 1950 the Old Grammar School and Well House have been separate private houses.

© **Lucy Archer**



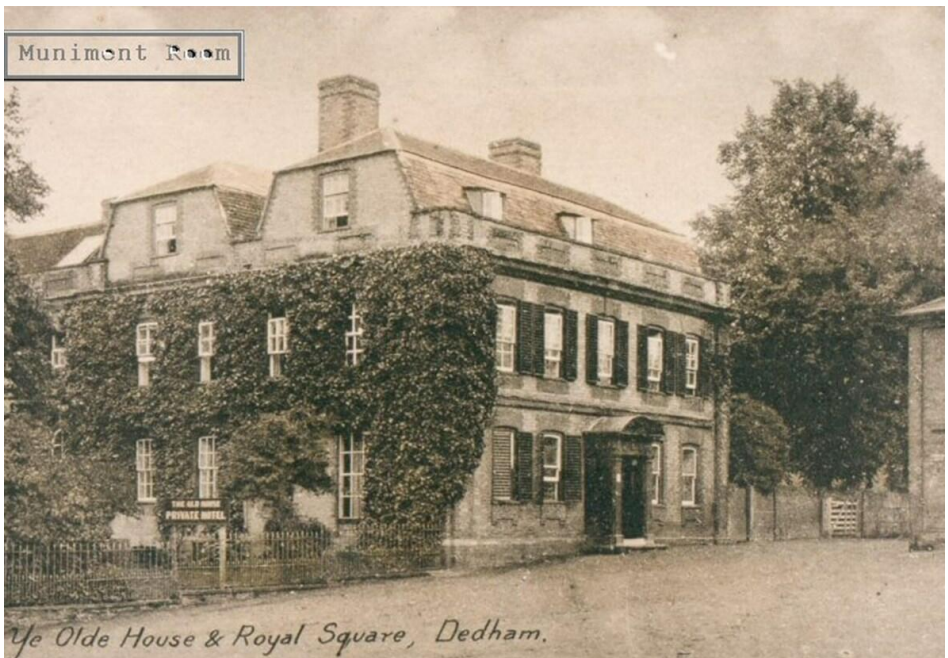
The garden on the south side of the Grammar School in the 1860s, showing a gateway opposite the east end of the church.



The creeper-clad schoolroom on the left was built for the Grammar School by headmaster Dr Lermitt in 1868. It was demolished in the late 1960s.



The Grammar School c.1900, showing, on the far left, the large older school building and a low addition on what is now the front garden of Beech House.



Ye Olde House & Royal Square, Dedham.

The Old House Private Hotel in the 1920s or early '30s.



View of our garden, By Ruth Higginson

History repeats itself
Written in 1869, reprinted during 1919 Pandemic...

This is Timeless....

And people stayed at home
And read books
And listened
And they rested
And did exercises
And made art and played
And learned new ways of being
And stopped and listened
More deeply
Someone meditated, someone prayed
Someone met their shadow
And people began to think differently
And people healed.
And in the absence of people who
Lived in ignorant ways
Dangerous, meaningless and heartless,
The earth also began to heal
And when the danger ended and
People found themselves
They grieved for the dead
And made new choices
And dreamed of new visions
And created new ways of living
And completely healed the earth
Just as they were healed.



Midsummer and the June drop



June is here! It's halfway through the year and midsummer is on the horizon, bringing with it the longest day of the year but the slow shortening of each one as we slide towards winter.

But let's not get ahead of ourselves (or depressed); there's still plenty to do and enjoy.

Right now in my garden *Weigela* 'Bristol Ruby' is in flower, as are the purple-pink pompoms of *Allium hollandicum*, floppy deep pink and purple cranesbill (hardy *Geranium*), golden daylilies (*Hemerocallis*), royal-purple 6ft *Delphinium* 'Nimrod' and the shorter but no less lovely spires of pink, white and purple *Verbascum* 'Pink Domino', *Verbascum chaixii* 'Album' and *Verbascum phoeniceum*, which were grown from seed and are now shooting up in all the borders.

June is also the month for tall bearded irises (*Iris germanica*) to do their thing. I can't identify the varieties I'm growing, but perhaps you're growing the navy blue 'Belle Hortense'. Whatever the case, leave them where they are after they've finished

flowering so their rhizomes can bake in the sun all summer to guarantee another show next year.

Also blooming, of course, are the roses. As well as the front garden practically dedicated to them, they make an appearance in every border behind the house. I have too many to name but, as they get into their stride this month, deadhead repeating varieties to keep the show going. Don't just snip them off behind the flower, take your secateurs down to the next leaf join – you might be able to see a small bud where the leaf joins the stem: slope your cut down away from it and you should see another flower bloom from here later in the season. Deadheading is deeply satisfying and an almost zen moment when I get to look around and appreciate the hard work that goes into maintaining the garden.

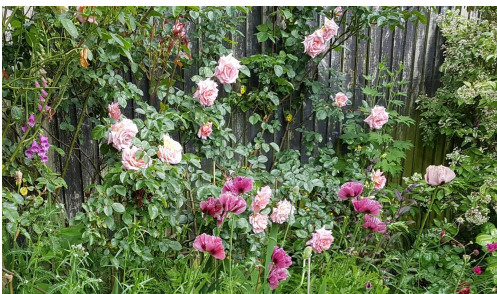
Once they are done and the leaves are looking tatty, you can also take your secateurs to oriental poppies (*Papaver orientale*). Cut right back to the ground, water them well, feed them and mulch to keep the moisture in and you'll help them to put on fresh growth and maybe some new flowers. And if you're cutting back you can be clipping; so – provided there are no birds nesting – take some shears to any box hedges that edge your borders.

Although it's too early for most to flower, fuchsias will have been sprouting since May so it's a good idea to pinch out the tips to encourage side shoots, a bushier habit and more flowers. While I'm sure that's helpful for young plants or bedding fuchsias, I'm not doing that on my 4ft *Fuchsia magellanica* var. *gracilis* 'Aurea' bush – I'll be at it all summer! You can also pinch out the leading shoots on *Chrysanthemum* and *Helianthus* (sunflower), but if you are going to try and grow big blooms (maybe for show), don't pinch out the tip; instead pinch out sidebuds lower down the stem so the plant puts all its energy into growing a single large flower at

the top. Check online for more details to do this well.

Most seeds have been grown on and planted out by now, but you can start sowing biennials – foxgloves, nicotianas and wallflowers among others – for next year. Biennials spend their first year putting all their effort into building strong roots and foliage, before flowering next summer. You'll just need a sheltered area, ideally a cold frame or growhouse if you have one, to get them through the winter.

Last month was the Chelsea chop, this month it's the June drop when fruit trees naturally thin their crop. You can do it by hand too for better fruit: aim for two pears per cluster, one apple and plums to be 5-8cm apart. I have three blueberry bushes in pots using ericaceous compost and it's important to try to water them with rainwater; why not install some rainwater butts this summer if you don't have them already.



Finally, enjoy the last harvests of asparagus this month, then leave the ferns to develop over the summer and feed the crowns for next year's spears.

Elliott Frisby

Dedham Horticultural Society

Unfortunately, due to continuing coronavirus precautions, the Dedham Horticultural Society committee has decided to cancel our plant sale (23 May), coffee morning (11 June) and visit to Barnsdale Gardens (25 June).

For the latest updates, please see website www.dedhamgardening.wordpress.com.

STOUR VALLEY U3A has set up a number of support systems for its members during the coronavirus pandemic.

These include dedicated helplines for those self isolating in East Bergholt and Manningtree/Mistley/Lawford to help with basic needs such as food shopping and prescription collections.

A general support group for members is also available for those living in East Bergholt.

Lectures for April, May and June have been postponed until July, August and September, pending government advice.

A weekly newsletter is being circulated to all 400 members to keep them informed with news and updates.

For further information visit: <https://u3asites.org.uk/stourvalley/home> or contact chairman Graham Manuel gandamauel@gmail.com or secretary Sue Basted susanbasted10@gmail.com

WEA Dedham Branch

We are hoping to be able to start the Autumn Lectures in October as usual. However there is no guarantee at the present time. Hopefully we will know by July/August. Until then you can go on the WEA website using the following link www.wea.org.uk/online

and register for updates on the free courses and activities they are running. There are some very interesting activities.

It is possible to use a landline phone for some of the courses. You would need to ring their helpline to find out how this is done. Otherwise you would need a laptop, tablet, mobile phone if you want to participate using Zoom.

If you have a general query about the Dedham WEA please ring

Ruth 322598 or Colin 322595

Constable Country Medical Practice

Coronavirus Update: It has been a challenging time for all of us over the last couple of months. The practice has put in place many measures to enable patients to continue to receive medical advice and treatment, whilst minimising risk to both patients and staff. Many of these measures will remain in place for the foreseeable future. Until a vaccine becomes available, we all continue to be at risk of contracting the virus and the fall in the number of confirmed cases is due to national and local measures which have been put in place. If we relax these measures too early then the number of confirmed cases may well increase again.

Our primary objective at the practice is to minimise the need for patients to come to the practice at all, but if they need to then to minimise the risk. Here is a summary of the measures we have put in place:

- If possible, submit any medical or admin query via our online eConsult service. Visit our website and follow the link. We aim to respond to all eConsults within 2 working days.
- If you cannot use eConsult or if your need is urgent, our receptionists will place you on a triage list and one of our doctors or nurse practitioners will call you back.
- After triaging, our clinicians can set up a video consultation, or may decide they need to see you in person.
- If you need to come to the practice, the clinician will ask you to wait in your

car with your mobile. The clinician will call you when they are ready to see you.

- You must tell us if you are experiencing any Covid symptoms such as fever, a new cough, or loss of taste and smell.
- Please wear a mask or wrap a scarf round your face when you come to the practice, and sanitise your hands.
- Our nurses and phlebotomists are still seeing patients whose need cannot wait. This includes blood tests requested by a doctor, dressings, cervical screening and child immunisations.

Our Capel site is open for limited times through the week for patients who need to be seen but cannot get to East Bergholt. The front doors remain closed to minimise the risk to patients visiting the pharmacy who can collect their medication from the side window. Patients seeing a phlebotomist, nurse or doctor are asked to wait in their car until they are called on their mobile number and asked to enter through the rear door.

Finally, we are still here to help our patients. Please feel free to contact us if you feel you need to speak to a clinician about any health concerns you may have. Also, please look out for vulnerable patients and if you have concerns regarding their health, please inform us.

Thank you for your continued support and cooperation.

Pete Keeble
Practice Manager

Parish Council

The work of the Parish Council continues despite the fact that our parish office is closed and we cannot have our usual meetings due to the Covid-19 pandemic. Councillors have held a practice 'Zoom' meeting to iron out technical challenges and we now propose to hold a formal meeting on Monday 1 June, which is our usual meeting date. Members of the public will be able to join us and participate in the meeting.

Please continue to check our website where all current updates will be posted. Although the Parish Clerk is not available in the office she is contactable at home by phone or e-mail (see below).

Footpaths: Our contractor has informed us that he is unable to cut our footpaths at present. We are working with him and others to try to find a solution to this. If you find a footpath that is particularly overgrown we would appreciate knowing about it.

Nicola Baker

Parish Clerk, Emma Cansdale
01255 871483

clerk@dedhamparishcouncil.co.uk

John Goldsbrough for any updates for
the website
webmaster@dedhamparishcouncil.co.uk

Stour Valley Men's Probus Club

Recent Meetings: At our last meeting on Wednesday 4 March, Maureen Clarke talked to us about "The plight of street orphans in India". At our recent AGM Dave Carman was voted in again as President and Speaker Secretary, Graeme Forsyth as Secretary and Val Pretty as Treasurer.

Future Meetings: The committee and those present at the AGM agreed that in the light of the Coronavirus outbreak all Club meetings would be cancelled for the next few months. We always take a break in August and we therefore plan to meet again on 2 September 2020 when Jan Derbyshire will speak on the good work of "The Shelley Centre For Therapeutic Riding".

Meeting Venue: We meet at the convenient St John Ambulance HQ, Manningtree CO11 1EB

New members are welcomed. Our Club endeavours to be simple in structure, be free of the constraints and obligations of service clubs, and involve members to a minimal cost. **New Members** are always very welcome at all meetings of the Stour Valley Men's Probus Club, just join us at 10am on a meeting date. The club is directed primarily to providing fellowship between members who are compatible with each other, and provide the opportunity for development of acquaintances. We meet on the first and third Wednesday of each month in Manningtree at 10 for 10.30am.

Please contact President Dave Carman on 01255 880202 for further details.

Online theatre and music has greatly expanded in the last month, with more and more organisations streaming shows from the archives or putting together remote performances. Most are FREE and via YouTube. Many operas from European houses have English subtitles. The daily showing from the [Metropolitan Opera New York](#) continues, with a wide range of fine productions. You can check up to date details on my website which has clickable links to all shows. www.eamaa.org Max Wilkinson

SHOWS

WhatsOnStage, lists free online stage shows, musicals and opera.

Andrew Lloyd Webber, a different show streamed free each Friday for 48 hours, via YouTube.

Broadway shows, a wide selection includes Swan Lake, Alice's Adventures in Wonderland, Peter Pan, Present Laughter, Romeo and Juliet, Salomé (film), Swan Lake, Brokeback Mountain, Indecent, Holiday Inn, Kinky Boots, Moses, The King and I, Oklahoma, Peter Pan, Cats, Carousel, 42nd Street, An American in Paris., via Broadway HD, \$8.99 per month subscription after 7-day free trial.

Wind in the Willows, From London's West End, at Rent for £2.99.

Les Misérables, the West End show in a staged version available to download via Sky, Amazon or iTunes Store for £9.99, of which £5 goes to charities.

THEATRE

Royal Shakespeare Co Hamlet, Romeo and Juliet, Much Ado About Nothing, Othello, The Merchant of Venice, Free via YouTube

Globe Theatre London, Eight Shakespeare plays, including Hamlet, Romeo and Juliet, A Midsummer Night's Dream and The Winter's Tale, all free, on rotation every 2 weeks.

National Theatre, one play a week, from 7 pm every Thursday. Each play available for 7 days, Free via YouTube.,

The Croft, by Ali Milles, [Original Theatre Online](#), £4.17.

Marquee TV, Many productions, including from the Royal Shakespeare Company, the Royal Opera House, Glyndebourne, Bolshoi Ballet, Free 14 day trial then £8.99 per month.

MUSIC

Schedule of online free musical events, from [ClassicalMPR](#)

London Philharmonic Online, series of free concerts

Melbourne Recital Centre, Six Chamber concerts.

London Symphony Orchestra, Archive recordings of full-length concerts are being streamed at 7.30pm (BST) on Thursdays and 7pm on Sundays. More than 500 videos on the LSO YouTube channel.

Music in Felixstowe Wednesday concerts, at 11.30 am. Previous live streams also available, via Facebook.

Orchestra of the Age of Enlightenment, includes musicians playing ensemble from their homes.

Bach: Double Violin Concerto in D Minor, Handel: Alleluiah Chorus, played remotely, Orchestra of the [Royal Opera House](#) via YouTube.

Saffron Hall Chineke! Orchestra and Sheku Kanneh-Mason (cello), Samuel Coleridge-Taylor---- Ballade in A minor---- Joseph Haydn (1732-1809): Cello Concerto No. 1 in C---- Fauré Élégie in C minor; Brahms): Symphony No. 2, and other events on the website,

Wigmore Hall, almost 50 concerts available to stream via YouTube.

English Touring Opera, a series of events on YouTube.

Bavarian State Opera Monday Concerts via website livestream.

Berlin Philharmonic Orchestra, Some 600 concerts in the archive- Free trial

Budapest Festival Orchestra quarantine soirées, Chamber music.

Carl Orff: Carmina Burana, Finnish

National Opera and Ballet online free.

Los Angeles Philharmonic Orchestra, a selection of concerts include:

Monteverdi: Vespers ----- **Bach: St Matthew Passion** ---**Bach: Christ lag in Todesbanden**, **Rameau: In convertendo**, **Handel: Dixit Dominus** ----- **Music from the Springhead Easter Play**,

OPERA

Metropolitan Opera New York, daily performances free online from 00.30 am to 11.30 pm UK time

Gilbert & Sullivan: The Mikado, The Johnathon Miller production, [English National Opera](#).

Handel: Semele, with Rosemary Joshua, John Mark Ainsley and Sarah Connolly, [English National Opera Free](#).

Smetana: The Bartered Bride, [Garsington Opera](#) via YouTube.

Mozart: Le Nozze di Figaro, the 2020 production. [Garsington](#)

Mozart: Die Entführung aus dem Serail, [Glyndebourne Opera Online Free](#).

Wagner: the Ring Cycle, All four operas semi staged from the 2016 productions, [Opera North](#) via YouTube.

Britten: The Turn of The Screw, first streamed live in February 2020, [Opera North](#) via YouTube.

Komische Oper Berlin several operas with English subtitles including **Massenet: Pelléas et Melisande**, and **Thaïkovsky: Eugene Onegin**.

Puccini: La Bohème, sung in Italian with English subtitles, [to 17 Jul](#).

La Fenice Opera House Venice, A programme of streamed operas and extracts including **Monteverdi's three operatic works**, **Aida**, **Tosca**, **Les Chevaliers de la Table Ronde**.

Antonio Pappano, [The Royal Opera House](#) music director, explores his favourite pieces, in **HOUSE MUSIC** including from **La Traviata**, **Parsifal**, **Lucia di Lammermoor**, **Peter Grimes**, via Facebook.²¹

Richard Strauss: Der Rosenkavalier, vintage performance with Kiri Te Kanawa, Anne Howells, Aage Haugland, Barbara Bonney, conducted by Georg Solti, sung in German, no subtitles., [Royal Opera House](#).

Verdi: La Traviata, Richard Eyre's production, [ROH - LL](#); [to 8 Jun](#).

Johann Strauss: Die Fledermaus, 1983 production with Kiri Te Kanawa, in German with subtitles, [ROH](#).

Puccini: La Bohème, Oct 2019 production, [Teatro Comunale Modena](#) via YouTube.

Bizet: Carmen, sung in French, [Teatro Real de Madrid](#).

Vienna State Opera, daily performances, online, free.

Bizet: Carmen, The Zefirelli production with Nadia Krasteva, Massimo Giordano, Anna Netrebko., [Wiener Staatsoper](#) via YouTube.

Handel: Xerxes, Sung in German but good English subtitles, [Deutsche Oper am Rhein](#).

Monteverdi: L'Orfeo, [Bavarian State Opera](#) to 13 June.

BALLET/ DANCE

The Winter's Tale, 2014 production., [Royal Ballet Free](#) via You Tube [to 1 Jun](#).

Anastasia, Kenneth MacMillan's one-act ballet created in 1967, [Royal Ballet](#); [to 28 May](#).

ARTS

Young Rembrandt, with an introduction from exhibition curator An Van Camp, and exploration of the exhibition section by section., [Ashmolean Museum Oxford](#).

Virtual tours, of galleries and other sites, and many other features, [Google Arts and Culture](#)

David Hockney, [Royal Academy London](#) Exhibition on Screen.

The British Museum Online access, including search of its collections, virtual tours with Google's street view and two virtual galleries.

Right at Home Colchester & District

Quality Care & Support, from hourly visits to Live-In care.



Our services include:

- Companionship
- Transportation and errands
- Meal preparation
- Light housekeeping
- Help with washing
- Personal care
- Medication support
- Post-operative support
- Live-In care
- Specialist Dementia care
- Hospital to home

and much more...

01206 932792

Contact us today on:

-  01206 932792
-  colchester@rightathomeuk.com
-  www.rightathomeuk.co.uk/colchester
-  www.facebook.com/rightathomecolchesteranddistrict/



Good



WHY CHOOSE RECODECK? ✓ FIT AND FORGET ✓ LONG LIFE SPAN ✓ LOW MAINTENANCE



EASY TO INSTALL, EASY
FIXING DESIGN WITH
HIDDEN FIXINGS

LONG LIFE SPAN AND LOW TO NO MAINTENANCE

APPLICATION

Residential Decking
Pool Decking
Rural Walkways
Commercial Properties
Care Homes

FEATURES

No Rotting
No Splintering
No Warping
No - Low Maintenance
UV Stable
Slip Resistance
Range of Colours Available

KEY BENEFITS

Long Life Span
Child/Barefoot Friendly
Fit and Forget
No Painting or Staining
Eco Friendly



Step on Safety
For everything, GRP

CALL US NOW ON 01206 396 446

Your composite decking specialists



STEP ON SAFETY LTD, FACTORY LANE, BRANTHAM, SUFFOLK CO11 1NH

WWW.STEPPONSAFETY.CO.UK



Kingsleigh
Property Consultants

**High Street, Dedham,
CO7 6DE**



Dedham Road, Ardleigh / Dedham border, CO7 7LL

Individual detached five-bedroomed home situated on the Dedham / Ardleigh border. This pretty house enjoys the benefit of spacious, flexible accommodation including ground-floor bedroom and en-suite.

EPC Rating: C

Guide Price £630,000



Rosemary, Coles Oak Lane, Dedham, CO7

Situated within the Dedham Vale Area of Outstanding Natural Beauty, this delightful three-bedroomed detached bungalow is within easy reach of all that Dedham has to offer.

EPC Rating: E

Offers in Excess of £550,000



Cottee's Cottage, High Street, Dedham, CO7 6HJ

Situated in an enviable position in the heart of beautiful Dedham, this two-bedroomed cottage will suit an array of potential buyers.

EPC Rating: C

Guide Price £280,000

Covid-19

We would like to reassure you all that we are taking additional precautions during these unprecedented times and, should we need to close the office, we are able to work remotely.

We can offer **video viewings** and are preparing **360-degree tours** to enable **virtual viewings**.

We would like to extend our very good wishes to all our friends and neighbours during this difficult time.



SALES & LETTINGS



sales@kingsleighresidential.co.uk
lettings@kingsleighresidential.co.uk
www.kingsleighresidential.co.uk

WHITTLES

CHARTERED ACCOUNTANTS

www.whittles.co.uk

**Sound, clear advice
Personal, practical
approach**

Business advisory, tax, audit and
accounting services for companies,
charities, trusts and individuals.



The Old Exchange, 64 West Stockwell St, Colchester CO1 1HE
T: 01206 762200 E: mail@whittles.co.uk

15 High Street, West Mersea CO5 8QA
T: 01206 385049 E: mail@whittles.co.uk



01206 230882
www.blandlandscapes.co.uk

Ivydene, Frating Road
Colchester, Essex, CO7 7SY

Bland Landscapes Ltd

Our services include:

Treework Specialists	All types Fencing Inc.
Felling	Equestrian Fencing
Pruning	Driveways
Reducing	Patios
Reshaping	Turfing
Stump grinding	Planting
Seasoned Logs	Grass Cutting

MARK FAGE ARCHITECT

MODERN AND TRADITIONAL DESIGN
RESIDENTIAL & COMMERCIAL PROJECTS
LOCAL KNOWLEDGE AND SUCCESS

Tel 07976 655387 **www.markfage.com**

e mail **mark_fage@btinternet.com**



LANGHAM
PRIMARY SCHOOL

EXPLORE our potential
PIONEER our talents
DISCOVER our world

Recognised by OFSTED for a
'welcoming environment' and a
well planned provision which **'engages
children's curiosity and imagination'**



Langham Primary School
School Road, Langham,
Essex CO4 5PB
Tel: 01206 272266
www.langham.essex.sch.uk




Dedham
Church of England
Primary School

Lifelong love of learning

A warm welcome awaits you at Dedham Primary School. Our team of dedicated teaching and support staff, school governors, parents and community work together for the benefit of all our children.

We value an inclusive culture of learning where through a broad range of opportunities each and every child is supported and challenged to reach their full potential.

We look forward to welcoming you to our school.

Headteacher: Mr David Larner
www.dedham.essex.sch.uk
01206 322242
@PrimaryDedham



Orchard Barns is a small nursery group of two unique nurseries located in the beautiful villages of Ardleigh and Stratford St. Mary offering outstanding care and education for children from 3 months to 5 years.

Come and visit us, it really is the best possible way to learn about us and get a true feel for these exceptional nurseries.





CALL FOR MORE INFORMATION
01206 231911 for Ardleigh
01206 323093 for Stratford
www.orchardbarns.co.uk
email: info@orchardbarns.co.uk





Open to All
regardless of
catchment area



From age
2 years...



*** Longer Opening Hours Now Available ***



www.ardleighpreschool.co.uk
Tel: 07517 430114



Ardleigh Village Hall, Station Road, Ardleigh, Essex, CO7 7RS

LANGHAM PRE-SCHOOL

VILLAGE LOCATION JUST 5 MINUTE DRIVE FROM:
HIGHWOODS, MYLAND, BOXTED, DEDHAM & GREAT HORKESLEY

2yrs +

From Sept 2017: Up to 30
free funded hours available

Come and explore...

Langham Community Centre
School Road
Langham
CO4 5PA

Company no. 07127779

Charity Commission no. 1135120



For more info: 07930 963638
www.langhampreschool.co.uk



Tel: 01206 322674

Mob: 07732 039726

Email: nicola.pedicare@gmail.com

Web: www.pedicarefootclinic.co.uk

Dedicated to the care of your feet

Also at Pedicare:

Felicity Watts Reflexology

in need of relaxation?



Please contact Felicity for an
informal chat about the benefits of
Reflexology and how it can help you.

T: 07432 098079

E: fjwattsreflexology@gmail.com

Relax • Restore • Revive

1 Threadneedle (Main) Street Dedham, Colchester CO7 6HH

BAILAND

CONSTRUCTION LIMITED

EXQUISITE ATTENTION TO DETAIL

TOAD HALL
THE HEATH, DEDHAM
ESSEX, CO7 6BT
01206 323230

WWW.BAILANDCONSTRUCTIONLIMITED.CO.UK

ENQUIRIES@BAILANDLTD.CO.UK

RECYCLING CALENDAR

FRIDAY	DEDHAM RECYCLING AND RUBBISH COLLECTIONS		
17 th April 2020	 FOOD WASTE	 PLASTIC & PAPER (6 bags)	
24 th April 2020	 FOOD WASTE	 BLACK BAGS (4)	
1 st May 2020	 FOOD WASTE		
8 th May 2020	 FOOD WASTE	 BLACK BAGS (4)	 1 BOX of CANS & 1 BOX of BOTTLES
15 th May 2020	 FOOD WASTE	 PLASTIC & PAPER (6 bags)	
22 nd May 2020	 FOOD WASTE	 BLACK BAGS (4)	
29 th May 2020	 FOOD WASTE		
5 th June 2020	 FOOD WASTE	 BLACK BAGS (4)	 1 BOX of CANS & 1 BOX of BOTTLES
12 th June 2020	 FOOD WASTE	 PLASTIC & PAPER (6 bags)	
19 th June 2020	 FOOD WASTE	 BLACK BAGS (4)	
26 th June 2020	 FOOD WASTE		
3 rd July 2020	 FOOD WASTE	 BLACK BAGS (4)	 1 BOX of CANS & 1 BOX of BOTTLES

MARK'S TRAVEL SERVICE

AIRPORTS / LONG DISTANCE / LOCAL

6 SEATER AVAILABLE

DEDHAM BASED
TEL 07759 688813


Registered Member 47972
MBACP

PSYCHODYNAMIC COUNSELLING & PSYCHOTHERAPY

Patrick Lyttle, MSc PGDip (Oxon)
Colchester, Dedham & East Bergholt

Tel: 07887 983837
Email: patricklyttle@gmail.com
www.psychologytoday?patricklyttle

 The Association for Business Psychology

Please mention *Dedham Parish Magazine* when you contact any of these Advertisers

ARDLEIGH CHIMNEY SWEEP SERVICES



- Traditional and Power Sweeping
- CCTV Inspections
- Safety Certificate Issued
- Fully Insured

ANDREW SMITH

01206 231718 • 07845 249820

31 HARWICH ROAD, LAWFORD, MANNINGTREE, ESSEX CO11 2LS

DEDHAM TENNIS CLUB



2019 membership starts
from 1st March.
To become a member, please visit our
website www.clubspark.tn.org.uk/dedhamtc

JUNIOR	£5
SENIOR WEEKDAY	£72
INDIVIDUAL	£106
FAMILY	£180

For more information contact:
DEDHAM LAWN TENNIS CLUB
THE DRIFT, DEDHAM,
COLCHESTER, ESSEX,
CO7 6AH

Email: dedham-tennis-committee@googlegroups.co.uk

LIDDLEBUILD BRICKWORK

N.V.Q / City & Guild Qualified

All aspects undertaken:
New Builds, Extensions, Garden Walls
Repair, Block Paving, Slab Work

Call for a free quote today

Tel: 07881 095818

Email: liddleiaian@hotmail.com



Tree Surgeon

Blake Tree Care

M: 07515 288736

O: 01787 228341

Providing excellence in:

Tree Felling - Canopy

Reduction - Hedge

Cutting

Tree Shaping and pruning - Stump Grinding

Pollarding - Emergency Storm Damage

Free Consultation for Small and Large Jobs

Public Liability Insurance

info@blaketreecare.co.uk

www.blaketreecare.co.uk

JP WILSON PLUMBING AND HEATING

Gas & Oil Engineer
Bathroom Installation

Boiler Installation
Faults & Servicing

Landlord Safety Certificates

Unvented Systems
Fully Insured

TEL: 01206 322141

MOBILE: 07445 270703

EMAIL: jon@jpwplumbing.co.uk

www.jpwilsonplumbingandheating.co.uk

Chartleigh
East Lane
Dedham
Essex CO7 6BE



Here at JPW Plumbing we remain committed to carrying out emergency works for our customers as long as social distancing guidelines can be maintained. We hope our customers are keeping safe & well.

With best regards Jon Wilson

Victoria Baker PILATES

Personally designed courses to improve posture, joint alignment, movement and strength.
Group and Individual sessions in a private, comfortable studio.

Cedar Building, Foxash Estate
Harwich Rd, Lawford
Colchester CO11 2LR



office 01206 322244
mobile 07887 987280
www.victoriabakerpilates.com

ORWELL ELECTRICAL LIMITED

95 School Lane, Stratford St. Mary
Suffolk, CO7 6LZ

Tel: **01206 322969**

Mob: **07534424493**

E-Mail: info@orwellelectrical.co.uk

www.orwellelectrical.co.uk

Call us for a free quotation

- Electrical Installations
- Electrical Testing
- Lighting Design
- Fire Detection Services
- 24-Hour Call out
- Response Maintenance



HORIZON LANDSCAPES EAST ANGLIA LTD

Design, Construction, Restoration, Maintenance

Email: info@horizonlandscapesea.co.uk Tel: 01206 322646

www.horizonlandscapesea.co.uk



Call for a free quotation

Office: **01255 436410**

Mobile: **07939 554197**

Website: www.spenceelec.co.uk

24 Hour Emergency Call Out

**All Electrical Work Undertaken
Domestic & Commercial**

ECA / NIC EIC Approved Electrical Contractor
Fully Insured. New Installation.

Rewires and Upgrades.

Additional Sockets and Lighting.

Garden / Garage Power and Lighting.

Full Electrical Testing and Inspection Service.

Domestic Electrical Fault Finding and Repair.

Prompt Reliable Service

Riverside Designs

*for all your interior design, hand finished blinds,
curtains and soft furnishings. Based in Dedham.*

Tel: 07966 310 206

email: enquiries@riversidedesigns.co.uk



that we can help
homeless people
to access jobs,
benefits and hous-
ing, or just keep in touch with families and
friends.



As more support services become digital, it is often assumed that everyone has access to a computer. But some do not.

Please support Beacon House, Colchester, so

All our services are free to those in need, but our costs include IT equipment, software, internet services and literacy support.

www.beaconhouseministries.org.uk

Bank account: 23-05-80, 24181162

R J Woods & Co Accountants

- Accounts
- Self Assessment Returns
- Company Tax Returns
- VAT
- Book-keeping
- Tax Planning
- Payroll

Confidential advice
Free initial consultation
Call Rob or Tracy Woods

Tel: 01206 322 604

Email: info@rjwoodsandco.com

Website: www.rjwoodsandco.com



All aspects of building work e.g. extensions, removal of walls etc, plastering, tiling, electrical & plumbing are undertaken as we project manage your kitchen from start to finish.

HUNTERSBROOK

The Kitchen & Bedroom Specialist

01279 442432

sales@huntersbrook.co.uk

"Designers & fitters covering Essex & Suffolk"

Worcester-Bosch • Baxi-Potterton • Chaffateux • Main
24hr CALL OUT



01206 322063
mobile: 07834 612009
01473 214215

www.jacksonplumbing.co.uk



GRANTS AVAILABLE OAP DISCOUNTS

Glowworm • Vaillant • Ariston • Ferrol • Biasi • Sime • Ideal



Richard Kimberley Services
Lawn Mower Service and Repair Centre
Rotary pedestrian, ride-on mowers, rotavators.
Shear sharpening service. Welding expert.

Proven workmanship. Engineering workshop established over 30 years.
Competitive, fast service, collection and delivery by arrangement.

Telephone: 01206 230964

Email: rks@richardkimberleyservices.co.uk

88 Hungerdown Lane, Lawford, Manningtree, CO11 2LY

'Covid-19 has not stopped the grass growing!

Richard Kimberley would like to assure local gardeners that his nearby lawnmower servicing and repair business is open as usual for the residents of Dedham who wish to keep their lawns trimmed and tidy.

DEDHAM VALE TREE SURGERY

NPTC qualified, fully insured
 24 hr emergency tree work
 Hedge maintenance and reduction
 Logs, kindling and woodchip supplied
 Stump grinding



All tree work undertaken
 Crown reduction and shaping
 Crown lifting and thinning
 Pruning and pollarding
 Felling, sectional dismantling

Specialising in big trees in delicate situations

info@dedhamvaletreesurgery.co.uk
 www.dedhamvaletreesurgery.co.uk

mobile 07756 811098
 phone 01206 323056

S. J. Smith PLUMBING AND HEATING ENGINEERS

**From an extra radiator
 To a full heating system**



- * Boiler changes
- * Bathroom suites
- * Aqualisa, New Team & other showers
- * Electric showers
- * All heating and plumbing repairs



FREE ESTIMATES
 CORGI REGISTERED

22 Bullock Wood Close

**COLCHESTER
 843 493**



For you, your family and
 your business

gotelee
 SOLICITORS

01473 822102

Offices in Hadleigh, Ipswich, Felixstowe
 and Woodbridge

www.gotelee.co.uk

Wendy's Curtains

Professionally made to measure
 curtains, roman blinds and soft
 furnishings, with a wide range of
 fabric samples.

- ☎ 01206 395996
- ☎ 07966 718 414
- ✉ info@wendyscurtains.com
- 🌐 www.wendyscurtains.com

Diana M Cleaning Home and Office Cleaning



07925624123

dianamarinova61@yahoo.co.uk

CHARTERED ACCOUNTANT

Dedham based

**Accounting & Tax Services and Financial Consultancy
for small businesses
Affordable rates**

Accounts, self assessment, corporation tax, Quickbooks & Sage accounting software etc.

Call Philip Strangward on 01206 584913 or 07880 550000
for free initial consultation
www.philipstrangward.co.uk



FISHER JONES GREENWOOD SOLICITORS

Legal advice for you, your family and your business



With top tier Legal500 and Chambers & Partners rankings, our friendly and experienced team offer a full range of commercial and individual legal services, no hidden costs, Saturday opening hours and fixed fee packages.

Get in touch with the local experts today to see how we can help.

www.fjg.co.uk ■ 01206 835300 ■ info@fjg.co.uk

Charter Court ■ Newcomen Way ■ Colchester Business Park ■ CO4 9YA ■ Free parking available

THE DEBBIEMILLARSCHOOL OF DANCE

CLASSICAL BALLET • TAP • MODERN • THEATRE • DISCO

Dance classes for ALL ages & abilities

For fun, recreation, progressive ISTD examinations

**Toddlers
Pre-school
Children
Teens
Adults**

**Ballet & Tap
Modern
Jazz
Disco/Street
Musical theatre**



**Tel: 01206 230806 Email: debbie@debbiemillar.co.uk
www.debbiemillarschoolofdance.co.uk**



Helen Sims Flowers

BEAUTIFUL FLOWERS
FOR ALL OCCASIONS

 **T: 07899 061840**
E: helensimsflowers@btinternet.com
www.helensimsflowers.co.uk

HOLIDAY COTTAGE
Long Road East
DEDHAM
Weeks, Weekends & Between Houses.

Tel. 01206 323 345 / 0797 9757 470

www.holidaycottagededham.co.uk
E Mail owlbarn@live.com

Essex & suffolk 
PEST SOLUTIONS

*Your local pest control experts
for home & business*

- Free advice, fast response
- Highly accredited (NPTA)
- Fully qualified & insured
- Discreet — unmarked vehicles

Tel: 01473 328092 (Holbrook)
Email: info@eandspestsolutions.co.uk

Andrew Ablett
Servicing & Repairs
Foxash Workshop,
Foxash, Lawford, CO11 2LR

TEL: 07917 223274

Servicing, Repairs, Diagnostics
Cars - Vans - Motorcycles



HILL FARM
LANDSCAPES

*Landscaping &
Fencing Contractors*

01206 303608
www.hillfarmlandscapes.com

A.Slocombe
General Builder

Hard Landscaping,
Roofing and Property Maintenance

Brickwork, Blockpaving Drives, Carpentry
No job too small, for free friendly advice
and estimates phone

01206 322 884 / 07786 871 364

the treatment rooms

AT MAISON TALBOOTH

Spa packages | Massages
Facials | St. Tropez tanning

Open all day, every day.
Call to book **01206 322367** or visit
www.milsomhotels.com/spa



MILSOM®
HOTELS & RESTAURANTS



REHABILITATION & TRAINING

Steve Hutley (BCCSDip.CanBhvPrac)
DOG BEHAVIOURIST

Website: www.stevhutleydogrehab.co.uk
Facebook: 'Rehabilitation and Training'
Email: steviehut@yahoo.co.uk

DOES YOUR DOG POSSESS THE FOLLOWING BEHAVIOURAL PROBLEMS?

Dog on dog aggression?; People aggression?;
Lead Pulling?; Constant barking?; Fears or phobias?;
Jumping Up?; Separation Anxiety?; Resource Guarding?

If you answered YES to ANY of these questions, then please don't hesitate!

Give me a call on: 07859879559.

Nigel Bruce Industrial & Domestic ELECTRICIAN

'The Swift', Upper Street,
Stratford St Mary,
Colchester CO7 6JW

Tel: (01206) 322 751

Your local tree specialist



SPECIALIST TREE SURGERY • ARBORICULTURAL CONSULTANCY

07841 623027
www.jftreespecialist.com



FULLY INSURED AND COUNCIL APPROVED
FREE ESTIMATES AND EXPERT ADVICE

01206 231720 · INFO@JFTREESPECIALIST.COM

What we do

- ✓ Tree Surveys
- ✓ Planting and Aftercare
- ✓ Fruit Tree Pruning
- ✓ Felling and Dismantling
- ✓ Tree Monitoring
- ✓ Hedge Cutting
- ✓ Stump Removal
- ✓ Fencing
- ✓ Landscaping
- ✓ Logs and wood chip supplied
- ✓ Mobile sawmill service
- ✓ Mowing contracts
- ✓ Crown Reduction, Lifting, Thinning and Cleaning



THE SUN INN



A REFUGE THAT'S EASY TO FIND BUT HARD TO LEAVE,
WHERE TIME SLOWS DOWN IN THIS RUSTIC RETREAT.

The Sun Inn, High Street, Dedham, Essex CO7 6DF
Telephone: 01206 323351
www.thesuninndedham.com



Manningtree Body Repair Centre

**Riverside Avenue West
Lawford
Manningtree
Essex
CO11 1UN**

Tel / Fax: (01206) 393 191

All Vehicle Body Repairs & Refinishing
work undertaken including:

- Insurance Work, MOT welding,
Panel Beating and Spraying
- Assistance given to "Non-Fault"
Third Party Insured
- Collections and Delivery



- CCTV
- Intruder Alarms
- Security Lighting
- Door & Gate Entry
- Aerials & Satellites
- Home Entertainment

For a Free, No Obligation Quote

Please Contact Us on: 01206 322071

07778 931357

www.mjssystems.co.uk

P.J. SAMPSON BUILDERS

COMPLETE BUILDING SERVICE
30 Years' Experience
Tel: 01206 230619
66 Tile Barn Lane Lawford

Brick work Specialist
Painting & Decorating
Plastering and Carpentry
Plumbing & Electrics
Roofing

All Property Maintenance

DEDHAM'S EAGER BEAVER HANDY MAN SERVICE



- * Grass Cutting
- * Hedging
- * Garden Maintenance

ANYJOB YOU HATE
WE CAN DO

Ring Philip: 07939 250 018
After 6pm 322 554

HUNNABALL FUNERAL SERVICE

York House, 41 Mersea Road,
Colchester, CO2 7QT



We are an established family firm
dedicated to upholding the traditional
values of respect and dignity and

Tel: (01206) 760 049 (24Hrs)
For immediate personal attention



The Essex Lottery is a weekly lottery run by Essex County Council to help the county's charities

Sixty percent of ticket sales goes to good causes that benefit Essex residents – more than double the proportion for the National Lottery. 50p from every £1 goes to the good cause chosen by the lottery player and 10p goes into a central fund for smaller causes. Local charities or good causes can register free of charge.

More details online: www.essexlottery.co.uk

Your local handyman at your service!

Is there a job that you have been putting off for ages that needs doing or you can't do yourself?

I live in Dedham and I am available for **electrical, plumbing** and **general maintenance** work. I served for 31 years as a police officer. Since retiring in 2010, I qualified as an electrician and run my own house renovation business. I am honest, reliable and deliver a good standard of work.

No job is too small! Call Terry: 07711 760245 / 01206 323243

I.C.P. PLUMBING & CENTRAL HEATING LTD.

Installation, breakdown, service, maintenance

Natural Gas, Oil & LPG specialists

GAS SAFE REGISTERED



Contact Ian Phillips on: **07885 228 646 (mobile)**

BOILER SERVICE or BREAKDOWN 07885 228 646

Our boiler specialist provides a breakdown and maintenance service

Richardson
.....&.....
Rothwell



bpec



184271

Plumbing and Heating Limited
Unit 1, Manningtree Road, Dedham

Make us your first call for plumbing & heating requirements.

We are your reliable local plumbers. We undertake all plumbing works from heating systems and bathroom suites to solar heating, air source & ground source heat pumps.

We offer a free quotation service so please call us to find out more details.

Tel: 01206 323732 Fax: 01206 323735 email: steve@richardsonandrothwell.co.uk



Osteopathy and Sports Therapy/Massage Clinic in the heart of Dedham providing treatment for:

- Back pain & sciatica
- Arthritis pain & stiffness
- Neck & shoulder pain
- Trapped nerves
- Tennis/Golfer's elbow
- Tendinopathy
- All joint strains
- Muscle/ligament strains

Dedicated to getting you better.



**DEDHAM
OSTEOPATHY**

**Luke Jackman Bsc Hons Ost
Registered Osteopath**

Tel: 01206 323 239 / 07974 144593
www.dedhamosteopathy.co.uk

One hour initial appointment • Free on-site parking • Open weekdays, evening & weekends



**PROFESSIONAL
RESIDENTIAL
DECORATING**

Family run
Fully insured
Exterior & Interior
Domestic & Commercial
Free competitive estimates
From small single rooms to whole house

t. **01206 679 154**
info@bgpainters.co.uk
www.bgpainters.co.uk



Dedham Vale Homecare Ltd

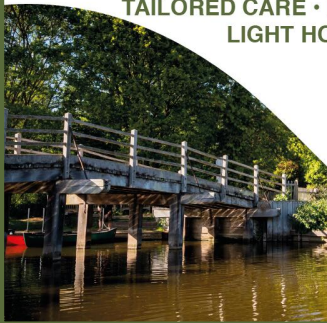
'Care with Integrity'

**TAILORED CARE • MEAL PREPARATION • SUPPORT TO APPOINTMENTS
LIGHT HOUSEWORK AND LAUNDRY • TRIPS OUT • SHOPPING**

Providing support, companionship & care to people in their own homes.

A bespoke service to meet identified individual needs with dignity and privacy.

www.dvhc.co.uk
info@dvhc.co.uk 01206 299683



PENROSE & PARTNERS VETERINARY SURGEONS

ALL CONSULTATIONS BY APPOINTMENT
COMPREHENSIVE SERVICE INCLUDING 24HRS EMERGENCY

PEELER'S END
UPPER STREET
STRATFORD ST MARY CO7 6LW

70 BRINKLEY LANE
HIGHWOODS
COLCHESTER CO4 9XE
TEL: (01206) 842 608

Daily/Weekend/late night appointments
Contact numbers

www.penrosevets.co.uk

Collier & Catchpole
COLLIERCATCHPOLE.CO.UK

BUILD WITH COLLIER'S

**A NEW BUILDERS' MERCHANT
HAS ARRIVED IN LAWFORD**

MANNINGTREE RAILWAY STATION
↑
A137 TO IPSWICH
↑
WE ARE HERE
↓
STATION ROAD B1352 TO MANNINGTREE →
COX'S HILL

WE STOCK

BRICKS & BLOCKS **ROOFING** **FENCING**
TIMBER & INSULATION **BARK & TOPSOIL**
LANDSCAPING **DRAINAGE** **PAINT**

BIRKFIELD COMPUTER SERVICES

also offering

SENIOR COMPUTING SERVICES.

Help for the more mature user.
We can supply refurbished systems.
Desktops/Laptops repaired.
Problems sorted, bugs removed.
Systems speeded up - **help given.**
W10 can look and run like Windows 7



Call Michael Hockley

01206 298479

birkfield@btinternet.com

DEDHAM IRONING SERVICE

TIRED OF IRONING?
Let us do it for you!



Ring Helen on
01206 322 554

Mobile
fresh fish shop



Dedham High street
THURSDAY 2pm - 2.30pm

Straight from Lowestoft fish market!
 A wide selection of fresh fish, smoked fish and seasonal shell fish.

Every Thursday
2pm- 2.30pm
 by the Dedham memorial

Deliveries also available in the Dedham area on Thursdays.

Leisure Hire



Marquee and Equipment Hire

- Marquees erected on most surfaces •
- Awnings • Walkways •
- Extensions to Buildings • Linings •
- Lighting • Furniture •
- Flooring & Staging • Heating •

Summer or Winter
Weddings Anniversaries Corporate

Brochure upon request

(01206) 242 196
leisurehire@gmail.com

Rix Petroleum East Anglia

Your local, independent fuel supplier



Heating Oil



Aga Cooker Fuel



Gas Oil & Diesel



Lubricants & AdBlue®



2018
Gold Trusted Service
 ★★★★★
feefo



www.rix.co.uk



01953 457057


abc preschool

30 funded hours for 3 & 4 year olds
 15 funded hours for eligible 2 year olds
 8.45am to 3.00pm (term time only)

JOIN US FROM 2 YEARS OLD

OFSTED OUTSTANDING

VILLAGE LOCATION JUST OFF THE A12, WITH A WONDERFUL GARDEN AND OUTSIDE CLASSROOM.



TEL : 01206 322466
admin@abcpreschoolstratford.co.uk
www.abcpreschoolstratford.co.uk

CHARITY NO: 1159203



Hewes, established in 1961, is a National Security Inspectorate Gold installer and can install new or upgrade your system:

- CCTV Supply & Installation
- Intruder & Fire Alarms
- Access Control & Gate Automation
- 24 hour Monitoring & Police Response

Concerned about SECURITY?

Would you like a FREE Security Review?

HEWES



INTRUDER



CCTV



FIRE



ACCESS

☎ 01206 807218

HewesGroup.com



Ravenhill Restoration Ltd

Restoration Carpentry specialising in historical timber framed buildings

- * Bespoke oak frame carpentry
- * Restoration structural repairs to Oak frame buildings
- * A family run business
- * Historical brickwork repairs and lime pointing
- * Barn conversions
- * Rotten timber removal and replacement
- * Masonry crack stitching



We have a passion for working to restore historical buildings. Previous projects include St Paul's Cathedral, Westminster Abbey, Hadleigh Deanery and Bury St Edmunds' Cathedral.

Tel: Paul Ravenhill - 07595 900 539
 ravenhillrestoration@gmail.com



Daniel Williams ELECTRICIAN



- Local Service
- Fuse Boards
- Rewires
- New Builds & Extensions
- Sockets & Lighting
- Testing & Fault Finding
- Kitchens & Bathrooms

07818 487419
 — Anytime —

01255 861791
 — Evenings —

daniel.electrical@btinternet.com



Cakes by *Abi*

www.abisartonecakes.webs.com

*Creative bespoke cakes
which taste as stunning as they look.*

*Formerly a Pastry Chef at Claridge's specialising in
stylish cakes and patisserie for all occasions. Based in Dedham.*

Mobile: 07870217003 Email: abisarton@gmail.com



*fidelity fides
fiduciary fiducia*

Fiducia Wealth Management is a Chartered, award-winning, independent wealth manager and we provide high value advice for individuals, business owners and trustees on investments and all aspects of financial planning.

Our advice is provided on a person to person basis and is always confidential.

If you believe your planning could benefit from a New Year review, do call Louise and she will be delighted to arrange a meeting with Gordon, Susie, Josh, Daniel or Michael.

Fiducia Wealth Management Limited,
Dedham Hall Business Centre, Brook
Street, Dedham, Colchester, CO7 7AD

T: 01206 321045
E: email@fiduciawealth.co.uk
W: fiduciawealth.co.uk

Authorised and regulated by the Financial Conduct Authority. FCA No. 408210

THE
Munnings
ART MUSEUM
DEDHAM - ESSEX

1 April - 1 November 2020
2pm - 5pm, Wednesday to Sunday
Bank Holidays 11am - 5pm

- Adults £8 (inc seniors)
- Children £1
- Concessions for students and National Art Pass holders
- Group bookings welcome
- Car and coach parking
- Café and shop

Reg. charity no. 310671

*Yours
with love
AJ*

*An exhibition based on the personal
correspondence of Alfred Munnings*



www.munningsmuseum.org.uk
enquiries@munningsmuseum.org.uk 01206 322127