

DEDHAM PARISH MAGAZINE



April 2019

Good Friday window in Dedham Church

WHITTLES

CHARTERED ACCOUNTANTS

www.whittles.co.uk

Sound, clear advice
Personal, practical
approach

Business advisory, tax, audit and
accounting services for companies,
charities, trusts and individuals.



The Old Exchange, 64 West Stockwell St, Colchester CO1 1HE
T: 01206 762200 E: mail@whittles.co.uk

15 High Street, West Mersea CO5 8QA
T: 01206 385049 E: mail@whittles.co.uk



Bland Landscapes Ltd

Our services include:

01206 230882
www.blandlandscapes.co.uk

Ivydene, Frating Road
Colchester, Essex, CO7 7SY

Treework Specialists
Felling
Pruning
Reducing
Reshaping
Stump grinding
Seasoned Logs

All types Fencing Inc.
Equestrian Fencing
Driveways
Patios
Turving
Planting
Grass Cutting

MARK FAGE ARCHITECT

MODERN AND TRADITIONAL DESIGN
RESIDENTIAL & COMMERCIAL PROJECTS
LOCAL KNOWLEDGE AND SUCCESS

Tel 07976 655387 www.markfage.com

e mail mark_fage@btinternet.com

BAILAND

CONSTRUCTION LIMITED

EXQUISITE ATTENTION TO DETAIL

TOAD HALL
THE HEATH
DEDHAM
ESSEX
CO7 6BT
01206 323230

WWW.BAILANDCONSTRUCTIONLIMITED.CO.UK
ENQUIRIES@BAILANDLTD.CO.UK

YOGA

DEDHAM RETREATS

PILATES

LOU HART

HOLISTIC HEALTH CENTRE
DEDHAMRETREATS.COM

MEDITATION

LANGHAM PRE-SCHOOL

VILLAGE LOCATION JUST 5 MINUTE DRIVE FROM:
HIGHWOODS, MYLAND, BOXTED, DEDHAM & GREAT HORKESLEY

2yrs +

From Sept 2017: Up to 30
free funded hours available

For more info: 07930 963638
www.langhampreschool.co.uk

Come and explore...

Langham Community Centre
School Road
Langham
CO4 5PA

Company no. 07127779
Charity Commission no. 1135120



Please mention **Dedham Parish Magazine** when you contact any of these Advertisers



DEDHAM PARISH MAGAZINE

FIRST PUBLISHED IN 1876

APRIL 2019

NOTE: Deadline for May magazine is 14/04/19

DEDHAM PARISH CHURCH

dedham-and-ardleigh-parishes.org.uk

Antony Wilson	Vicar	☎323 919
Merv McKinney	Assistant Minister	☎323 919

PARISH OFFICE

Claire Arculus	Parish Administrator	☎322 136
Charlotte Parker	Assistant Parish Administrator & Safeguarding	

Assembly Rooms	✉stmaryda@gmail.com
High Street, Dedham CO7 6HJ	Tuesday 9-11am, Thursday 11-1pm

CHURCH WARDENS

Suzanne Woods	☎01255 870640
Peter Wilson	☎323 179

MUSIC

Antony Watson	Director of Music	☎322 425
---------------	-------------------	----------

MAGAZINE CONTENT

Cover: Good Friday window in Dedham Church by C.Parker

- 5 Church services
- 6-7 Viewpoint
- 8-9 Easter services & events
- 10-11 Dedham Assembly rooms, Duchy Barn & Films
- 12-13 Feature: Dedham Therapy Farm
- 14-15 Feature: Shakespeare House Gallery
- 16-19 What's On!
- 20-21 Feature: Fast Internet
- 22-23 Feature: Essex Rose Tea Rooms
- 24-25 Gardening notes
- 26-27 Medical & Clubs

DEDHAM PARISH MAGAZINE

Editor

Charlotte Parker	✉dedhameditor@gmail.com
------------------	-------------------------

Advertising

✉dedhamadverts@gmail.com
☎940 123

Can we help?

Sometimes things in life can just get too much to cope with on your own...

Psalm 34:18: *The Lord is close to the broken-hearted and saves those who are crushed in spirit.*

If you would like some support or know of anyone who would, please contact:

Ann Shaw ☎322 192 or **Christine Mingay ☎230 723**

If you have been bereaved or know of anyone who has, please contact

Vee Druit ☎322 000 or **Ruth Higginson ☎322 598**

First Steps: Want to get back involved with church but don't know where to start?

Contact Liz and John Reed tel: 323770

Throughout the magazine local telephone numbers omit ☎01206 area code unless otherwise stated.

Services for APRIL

Sunday 7th April

8am	Holy Communion BCP	Dedham
9.30am	Morning Praise	Dedham
11am	Morning Prayer CW	Ardleigh
5pm	Evensong	Dedham

Palm Sunday 14th April

8am	Holy Communion BCP	Ardleigh
9.30am	Rise N'Shine	Dedham

Maundy Thursday 18th April

6pm	Maundy Thursday meal/Communion	Ardleigh
-----	--------------------------------	----------

Good Friday 19th April

10am	Good Friday Get Together	Ardleigh
11am	Stations of the Cross Walk	Dedham
2pm	Good Friday Meditation	Dedham

Easter Saturday 20th April

8pm	Service of Tenebrae	Dedham
-----	---------------------	--------

Easter Sunday 21st April

8am	Holy Communion	Dedham
9.30am	Holy Communion	Dedham
11am	Parish Eucharist	Ardleigh

Sunday 28th April

8am	Holy Communion BCP	Ardleigh
9.30am	Morning Praise followed by APCM	Dedham
5pm	Revive@5	Dedham

Sunday 5th May

8am	Holy Communion BCP	Dedham
9.30am	Rise N'Shine	Dedham
11am	Morning Prayer CW	Ardleigh
5pm	Evensong	Dedham

BCP – Book of Common Prayer CW – Common Worship

FLAG DAYS:



Sunday 1st April
Easter



Friday 21st April
HM The Queens birthday



Monday 23rd April
St Georges day

Weekly Midweek

Services:

Monday 15th to Thursday 18th April, 7.30am Morning Prayer & 6pm Evening Prayer

Rest of the month Tuesday Morning Prayer at Dedham at 10.30am / Thursday Evening Prayer at Ardleigh at 5pm

If you would like a lift to church contact Ann Shaw ☎322 192 or Ruth Higginson ☎322 598

Special Events:

Dedham Lunch Club Monday 1st April - 12.30pm - Essex Rose Tea Rooms, Dedham

Men's Breakfast – Saturday, 13th April - 9am– The Vicarage.

Ardleigh Friendship Group Tuesdays, 9th & 23rd April - 10am-12pm Ardleigh Church.

Annual Parochial Church Meetings - Saturday, 27th April 10.30am Ardleigh Sunday, 28th April 11am after morning service, Dedham

See page 9 for Easter Events

Do you believe in the Resurrection?

This Easter time we are looking forward to a visit to our parishes from Father Oswin from the Community of the Resurrection.

transported back to my days of living in Japan. I hope to have the chance to share with you something of my love of these places when I visit in Holy Week. Monty Don makes the point that the blossom is revered not because it falls



Father Oswin writes..... Greetings from the brothers of the Community of the Resurrection in Mirfield. Antony asked me to write something on Easter to introduce myself so that you will know who is joining you for Holy Week. And as I begin writing I suddenly notice for the first time the cherry blossom shyly opening in our grounds. There are twenty acres of these surrounding a fine church and Victorian mansion which is our monastery, set in one of the mill towns of the West Riding. The blossom is showing a rare delicacy amid the stonework and bare branches: it lights up the scene.

I've recently been watching Monty Don on Japanese gardens (the joys of the iPlayer). The filming is sumptuous. There's blossom everywhere, and I'm

and wounds us with knowledge of the transience of things, but rather because it is exuberant in its energy, bursting in profusion from the winter tree. *It tells of new life.*

And so does Easter. The twelve brothers with whom I live are dedicated in the name of the Resurrection – our hope made flesh in the mystery of Christ's return from death and the grave. Life is more permanent than defeat. Hatred will never have the last word. Do we need this? Do we need a saviour who goes to the extremity for our sake? And do we need an annual remembrance of this, our year to turn on this one event from two thousand years ago? For many people their days are comfortable, brimming with interest, with friendships, with plans.

And for many they are not. But whichever we are experiencing now, we share a common nature and each life is touched by the perplexity and sorrows of others. They are ours, whether we recall it or not. Our common humanity needs the unique good news of Christ's Resurrection, known afresh at Easter. It is why we come together as Church. And it's why monks and nuns responding to a call to live life together can be a sign of Easter.

This has been my experience. I joined the brotherhood some twenty years ago. I had been happy working in a back-street parish in Liverpool. But the call to live life together, to pray together daily, was strong. Some of the brothers are elderly; and so we all experience the deprivations of ageing they are facing. Some are younger exploring how the hopes of a wide world and a full life can be met in giving ourselves, and so we are all reminded of this choice we make day by day. And many visitors and students come and live alongside us: our life is one of listening to God through what others say.

I look forward to meeting you in a few weeks' time, sharing with you the experience of these days of renewal, and hearing something of what our loving Lord is doing for you.

Oswin CR.

Elsewhere in the Magazine (page 9), you will see details of Easter events including opportunities to meet and chat with Father Oswin.

Faith & Japanese Art
A presentation
by Father Oswin



Monday 15th April
7.30pm
At the Vicarage

Fancy a onezone
conversation
with Father Oswin?

He will be available in the
afternoons on Monday,
Tuesday and Saturday of
Holy Week

*Please contact Antony Wilson
to book a time*





Terry Waite at Dedham Church 28th April Travels with a Primate

Terry Waite, the former hostage who spent 1,763 days in captivity in the Lebanon, including four years in solitary confinement, is to talk in Dedham on

28 April at Revive@5.

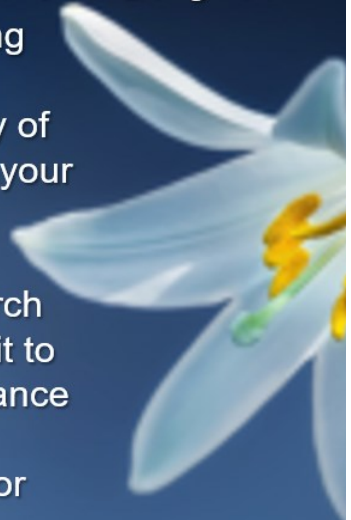
He will talk about his travels with the Primate, Archbishop Robert Runcie, during the seven years before he was taken as a hostage in January 1987.

Lilies for Remembrance At Easter

The flower group will again be arranging lilies in church for Easter Sunday.

If you would like to buy a lily in memory of a loved one to be included, please put your money in a plain envelope marked 'Easter Lilies' with your name and contact number and place it in the church money box by the entrance, or deliver it to the Parish office mailbox near the entrance to the Assembly rooms.

The cost is £3 per stem, the deadline for ordering is **FRIDAY 12th APRIL**



Easter



The story of love, death and resurrection

Sunday 14 April **Palm Sunday**

*Rise n Shine Celebration at Dedham 9.30am followed by brunch
Open House at Vicarage – drop in for tea anytime 3-5pm*

Monday to Thursday each day, 15th - 18th April

*Early Morning Prayer 7.30am at Dedham
Evening Prayer 6pm at Ardeleigh*

Monday 15th

*Lunch at 12.30 with Father Oswin at Ardeleigh – contact Sue Browne 230476
Faith and Japanese Art – a presentation by Father Oswin at the Vicarage at 7.30pm, all welcome*

Tuesday 16th

Alpha Course re-unions at 12.30 and 7.30pm at the Vicarage

Thursday 18th

6pm Maundy Thursday Meal and Communion– bring and share cheese, fruit and bread- at Ardeleigh

Friday 19th **Good Friday**

*10am Good Friday All Age Get-together at Ardeleigh Church
11am Stations of the Cross walk – meet Dedham Church
2pm Good Friday Meditation at Dedham Church*

Saturday 20th

*7.30am Morning Prayer – Dedham
Service of Tenebrae – a candlelit service of light to dark at 8pm at Dedham Church*

Sunday 21st **Easter Sunday**

*Holy Communion Services and a opportunity to renew our baptism vows
8am and 9.30am at Dedham 11am at Ardeleigh*

Father Oswin will be available for one-to-one conversations on Monday, Tuesday, Wednesday or Saturday in the afternoon. Please contact stmarydavicar@gmail.com to reserve a time.

Assembly Rooms



Horticultural Society Spring Show

Saturday 6 April

Antiques Fair

Sunday 7 April - All Day

Starlight Dancing

Mondays 9.30-12 am

Art Classes

Tuesday 9.30am – 3pm

Horticultural Society Meeting

Wednesday 3 April 7.30 pm

Dedham Art Society

Thursday 4 & 18 April – 2-4pm

Dedham Films

Wednesday 17 April - 7pm

For information and to make a booking for the **Assembly Rooms** please contact:

Tracy Woods ☎323921

✉ dedhamassemblyrooms@gmail.com

Duchy Barn



Coffee Mornings

Tuesdays, Thursdays & Fridays

10.30 -12pm

Coffee Mornings

Tuesdays, Thursdays & Fridays

10.30 -12pm

Bridge in Dedham

Wednesdays, 2pm-5pm

Thursdays, 7pm-10pm

Youth Club

Fridays, 7.30-9.15pm

The Barn can be hired for small private events, parties etc Details of hire can be obtained from Anne Rowledge ☎322394

MEET UP MONDAYS

@

THE SUN INN, DEDHAM



DO YOU FEEL LIKE THE WEEKEND HAS DRAGGED?

ARE YOU FED UP WITH YOUR OWN COMPANY?

MAYBE YOU ARE NEW TO THE AREA?

YOU ARE INVITED TO COME ALONG & ENJOY

A FREE CUPPA & SOME FRIENDLY CHAT.

WE'RE HERE FOR TEA, COFFEE AND CAKE AS PART OF

#MEETUPMONDAYS #DONTBEONYOUROWN

10.30AM - 12PM EVERY MONDAY

Assembly Rooms, Dedham
 Films Admission 7pm, , begin 7.30pm
Tickets £4
 from Shakespeare House Gallery
 OR www.dedhamfilms.co.uk
Refreshments available



Bohemian Rhapsody

Directed by Bryan Singer (2018) PG13

Wednesday, April 17, 2019, 7:30 PM 10:00 PM

Bohemian Rhapsody is a foot-stomping celebration of Queen, their music and their extraordinary lead singer Freddie Mercury, who defied stereotypes and shattered convention to become one of the most beloved entertainers on the planet. The film traces the meteoric rise of the band through their iconic songs and revolutionary sound, their near-implosion as Mercury's lifestyle spirals out of control, and their triumphant reunion on the eve of Live Aid, where Mercury, facing a life-threatening illness, leads the band in one of the greatest performances in the history of rock music. In the process, cementing the legacy of a band that were always more like a family, and who continue to inspire outsiders, dreamers and music lovers to this day.

Tickets £4 will be available at the previous monthly screening or on the green banner of our home page, or from Shakespeare House Gallery, Dedham High Street.

CAN YOU HELP WITH THE MAGAZINE?

We need someone who can assist the editor to manage the adverts in the magazine by sending out invoices to our advertisers each month and liaise with them.

This would involve using excel. If you could help please get in touch with *Antony Wilson 323919*

Dedham Therapy Farm and Nurture Dogs



The most regular question we get asked is – what is it that you actually do – are you a pet farm? –No. Are you a farm? – No. Didn't you used to run a Rare Breeds Farm? – Well no somebody else did on the site, but we're not connected.

So here is what we do:

We provide Occupational Therapy and Animal Assisted Therapy.

Our dogs visit care homes, hospitals, schools, universities, individuals and Mental Health units within Essex, Suffolk and London.

Our farm is home to Sheep, Cows, Pigs, Ponies, Donkeys, Goats, guinea pigs, rabbits and a variety of birds.

Clients can be referred to us for anxiety, mental health problems including depression, learning disabilities, behavior problems, school attendance issues, problems with self esteem and confidence.

March is the beginning of our business year when we as a Community Interest Company reflect on the past and face

the challenges of the future.

2018/19 was an encouraging year in which we provided therapy services of more than 1000 sessions for people with learning disabilities and facilitated 294 Community Pay Back hours for offenders; our clients ranging from as young as four years old! We supported four work placements for Occupational Therapy Students from The University of Essex, LSBU and University of East Anglia, and eight work experience placements from a variety of schools and colleges. We were also pleased to host 10 Duke of Edinburgh Award volunteers.

Our clients, both paying and others, remain faithful and include NHS, Colchester Institute, Suffolk Community Learning Disability and Mental Health team, Essex Educational Authority Primary and Secondary Schools, Essex, Cambridge and London Universities and local hospices, We are Purple, The Gateway Clubs, The Community Payback Service (Sodexo) and Lapwings Education.

Our staff are dedicated and hard working, six paid and twenty volunteers.

Contracted employees include 2 qualified Occupational Therapists, and an Administrator.

As well as continuing to provide these vital services, we reviewed the entire operation, which resulted in the creation of monthly financial forecasting, budgeting and bookkeeping. We reviewed our pricing and invoicing and manage on a monthly basis the use of our paid staff, who have flexible hour contracts.

We open the farm to the public at weekends on a regular basis and introduced animal sponsorship. All costs are managed carefully, which together with better food management, is beginning to show improvements in our financial stability.

We have supported a large number of Occupational Therapy students on work placement over the years. During 2019 we are excited to be hosting 6 Occupational Therapy Students, 3 from Germany, 1 from Canada and 2 from the UK.

We are a “not for profit” Organisation and rely heavily on the support of the local community to help us survive and continue the vital service we provide.

Our fee income has risen but our survival is due, and we would publicly like to thank, local groups, businesses and individuals who have caught our vision and understand the value of Occupational Therapy and Animal Assisted Therapy– a reflection of society that many whom it has failed, benefit by

receiving Occupational Therapy, Animal Assisted Therapy and the meaningful work role here. This service enables clients to be restored to better health and wellbeing, dramatically improving the quality of life and improve, recover and maintain the skills needed for daily living and working. When you are passing the Car Park or hear the sounds of the country, the baying, crowing, barking, clucking and snorting just think comfort and love is being experienced by an individual in our community.



Could you support our dedicated team in 2019 with a donation, sponsorship of an animal or assistance, so that we can continue to provide this vital service?

The Farm Team

Have a look at our website
www.dedhamtherapyfarm.org.uk or
www.nurturedogs.org.uk
and you can contact us at
hello@dedhamtherapyfarm.org.uk
hello@nurturedogs.org.uk
hello@dedhamtherapyfarm.org.uk



Shakespeare House Gallery

It's over twenty five years since the opening of Shakespeare House Gallery in the High Street. Starting out as a gallery and antique business showing the paintings of Terry Jeffrey along with antiques selected by Margaret Cadman, the gallery opened its doors in the autumn of 1992.

The building dates back to the 16th century and had laid empty for 17 years. Before this it was an Antique shop with a workshop in the garden in what was once a stable yard, accessed through and under a hay loft which is still there. The Butterfly Conservation Charity had use of the top floor for a number years. Wild life artist Ken Smith used one of the rooms to work and show his paintings for a couple of years. Sadly Ken passed away just before Christmas 2018.

Margaret and Terry had use of the entire building for many years until the right hand side was turned into a Cottage five years ago. Over the years

the gallery has put on many exhibitions. The demise of the antique shops nation wide has resulted in that side of the business evolving into retail, selling home accessories and greetings cards. Artist's materials which were once in demand formed an important part, with Terry giving tuition in painting from the Gallery in the garden.

Unfortunately would be purchasers of materials prefer to use the Internet and have forced art shops to close their doors.

Terry's paintings are on permanent display along with other selected artists. Commissioning a painting from Terry is a satisfying way of acquiring a unique painting made just for you. Reproduction prints of paintings both limited and open editions are available.

Many of these prints are produced using the Giclee method which results in a light fast high resolution copy on quality paper. Hand coloured framing is a speciality along with ready finished framing to suit your work.

Terry's latest paintings can be seen on Instagram [terryjeffrey7140](https://www.instagram.com/terryjeffrey7140). Pottery on

sale here includes Emma Bridgewater, Sophie Allport and others.

There are many fine art bronzes along with selected fashion accessories and ornaments to enhance the home. The large selection of tasteful quality greeting cards have become a must have, appealing to customers from near and far.



Fashion jewellery including the sought after Ala Bar collection. Scarves, hats and gloves to choose from. Cheralee Clifford who has worked here from the start both part time and full time is very popular and will be pleased to help with all enquiries.

Dedham Parish Council Community Policing

As reported in the last parish magazine, the Parish Council had intended to discuss the relative merits of two different community policing initiatives, both of which are seeking financial

support from the Parish Council. This item was postponed in order to gather some additional information.

Dedham Mill Bridge: Also in the last article we reported on the imminent temporary closure of the bridge for repair works. We have now been notified that this work has been delayed until later in the year as the contractors could not guarantee finishing by Easter, a traditionally busy time in Dedham.

Sports Club: Work to create a ramp and veranda on the front of the Sports Club building is well under way and should be completed soon. Apologies to anyone who has been adversely affected by the disruption.

Annual Parish Meeting: Each year the Parish Council holds a Parish Meeting to provide an opportunity for local people to meet with Councillors to discuss topical issues. This year's meeting will be held on Monday 29 April, starting at 7.30 in the Assembly Rooms. We have yet to finalise the topics for discussion but they are likely to include flood planning and rural policing. Please check the website or the noticeboards for full details nearer the time.

The next meeting will be held on Monday 1 April at 7.30 in the Duchy Barn. All are welcome.

clerk@dedhamparishcouncil.co.uk
[01255 871483](tel:01255871483)

www.dedhamparishcouncil.co.uk

THEATRE

Wednesday 20 Mar to 1 Jun

The Tide Jetty, various times, Eastern Angles Theatre Company, at various locations - see web site.

Wednesday 27 to 30 Mar

Emma Michael Bloom's adaptation of Jane Austen's novel, Dedham Players, 7.45pm, at Dedham Assembly Rooms.

Monday 1 to 6 Apr

The Picture of Dorian Gray - adaptation of Oscar Wilde's novel, New Wolsey Theatre, Ipswich.

Wednesday 3 to 6 Apr

Playhouse Creatures by April De Angelis, Headgate Theatre, Colchester, 7.30pm,

Wednesday 10 to 13 Apr

Arthur Miller: All My Sons, Colchester Theatre Group, 7.45pm, at Headgate Theatre, Colchester.

Thursday 11 Apr

The Mystery of Raddlesham Mumps.

poet and broadcaster, Murray Lachlan Young, presents his new family performance, Lakeside Theatre, Colchester, 7.30pm, to 12 April.

All About Eve, National Theatre - LL, 7pm at Odeon and at Firstsite, Colchester

Friday 12 to 13 Apr

Heart of Darkness - adaptation of Joseph Conrad's novel, New Wolsey Theatre, Ipswich, 7.45pm.

Sunday 14 Apr

The Odyssey; The Pantaloons; 7.30pm at Sir John Mills Theatre, Ipswich.

Wednesday 17 Apr

Shakespeare: As You Like It, Royal Shakespeare Company - LL, 7pm at Lakeside Theatre, Colchester.



Lucy Phelps plays Rosalind in
As You Like It, 17 April

Friday 19 to 20 Apr

INK on the Road - a selection of the best new short plays direct from The INK Festival, Headgate Theatre, Colchester, 7.45pm.

Tuesday 23 Apr to 4 May

The 39 Steps - adaptation of John Buchan's novel, New Wolsey Theatre, Ipswich, 7.45pm.

Thursday 25 Apr

All About Eve, National Theatre - LL, 7pm at Lakeside Theatre, Colchester and at Firstsite, Colchester.

Wednesday 1 to 4 May

Shakers by John Godber & Jane Thornton, Reject Theatre Co, Headgate Theatre, Colchester, 7.45pm.

MUSIC



J S Bach: St John Passion, 19 April

Saturday 30 Mar

Light Classical Music: 'Stacks of Sax', Community Light Orchestra, 7.30pm at St John's Church, Ipswich.

Bach: Mass in B minor, Ipswich Chamber Choir, 7pm at St Mary-le-Tower.

I Was Glad: sacred music - Schubert's Mass in E flat major, Kelvedon Singers, 6.30pm at St Albright Church, Stanway.

Dvorak: Stabat Mater, Stour Choral Society, 2.30pm at Mistley Church.

Sunday 31 Mar

Triangle folk trio, Music at Rushmere, 3pm at St Andrew's Church, Rushmere, Ipswich.

Wednesday 3 Apr

African and Gospel Music, Quire, 7.30pm at Boxted Church.

Saturday 6 Apr

Schumann, Handel, Beethoven, St Botolph's Music Society, Colchester.

Opera favourites, Witham Choral Society at Witham Public Hall.

Sunday 7 Apr

Bach's Legacy, Suffolk Villages Festival, 6pm at Boxford Church.

Saturday 13 Apr

Gounod: St Cecilia Mass, Clacton Choral Society, 7.30pm at St James's Church.

Mozart and Mahler, Colchester Symphony Orchestra, 7.30pm at St Botolph's.

Sunday 14 Apr

Trio Recital for Violin, Clarinet & Piano, Kingfisher Ensemble, 2.45pm at Lion Walk Church, Colchester.

Haydn: Symphony No.26, Beethoven: Symphony No.7, Lavenham Sinfonia, 7.30pm at Lavenham Church.

Friday 19 Apr

Bach: St John Passion with The Suffolk Ensemble, James Gilchrist Evangelist, Aldeburgh Voices, 7.30pm at Snape Maltings.

Saturday 27 Apr

Haydn: Creation, Lexden Choral Society at St Botolph's, Colchester.

Evening of Song, Quattro Amici, 7.30pm at Headgate Theatre, Colchester.

Jubilant Sounds by Ronald Corp (world premiere) - and other English music, Trianon Music Group, 7.30pm at Ipswich Corn Exchange.

Friday 3 May

Spring Concert, Ipswich School Music, 7pm at Snape Maltings.

Pasadena Roof Orchestra, Mercury Theatre, Colchester, 7.30pm.

Sunday 5 May

Elgar: Dream of Gerontius, University of Essex Choir, 6pm at Snape Maltings.

OPERA and MUSICALS



Ain't Misbehavin', 15 March

Friday 15 to 30 Mar

Ain't Misbehavin', a Made in Colchester production, Mercury Theatre, Colchester, 7.30pm.

Tuesday 26 to 30 Mar

Rockstar Ollly Medicott - an original musical telling the story of a band's meteoric rise from obscurity; OD Productions, Headgate Theatre, Colchester, 7.45pm.

Saturday 30 Mar

Wagner: Die Walküre, Metropolitan Opera New York - LL, 5pm at Firstsite, Colchester.

Tuesday 2 Apr

Verdi: La Forza Del Destino, Metropolitan Opera New York - LL, 6.15pm at Firstsite, and Odeon, Colchester.

Thursday 4 Apr

The King and I, London Palladium - LL, 7pm at Odeon Colchester.

Tuesday 30 Apr

The Sound of Music, Bury St Edmunds Amateur Operatic & Dramatic Society, 7.30pm, to 11 May at Theatre Royal, Bury.

Avenue Q, Regent Theatre Ipswich 8pm, to 4 May.

Gounod: Faust, Royal Opera House - LL, 6.45pm at Odeon and Firstsite, Colchester.

Friday 3 to 4 May

An Honest Gentleman - a musical play about an East Anglian highwayman by Stuff of Dreams, at Christchurch Mansion, Ipswich, 7.30pm, book via Regent Theatre.

English Touring Opera

Verdi: **Macbeth**, Mozart **Idomeneo**, Rossini: **Elizabeth I**, at Cambridge Arts Theatre Apr 2 to 6; Snape Maltings Apr 11 to 13; Theatre Royal Norwich 25 to 27 Apr, all at 7.30 pm.

BALLET/DANCE

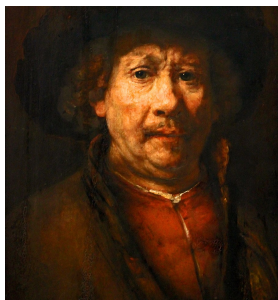
Saturday 6 Apr

Giovanni Pernice - Dance Is Life, Mercury Theatre, Colchester, 7.30pm.

Wednesday 1 May

Transitions Dance Company: The 2019 Triple Bill, Mercury Theatre, Colchester, 7.30pm.

ARTS



Tuesday 9 Apr

Rembrandt

Exhibition on Screen from the National Gallery, London and Rijksmuseum, Amsterdam, Firstsite, Colchester, 7.30pm.

For more events and details and a free email newsletter, see:

www.eamaa.org

LL = live satellite link

Max Wilkinson

Dedham Therapy Farm



We would love to see you at our

EASTER OPEN DAY

Monday 29th April, 11.00 am – 3.00 pm

Entrance at the rear of the Car Park, Mill Lane, Dedham

No entrance fee but donations please

Also open Sunday 23rd June & Monday 26th August

Colchester Committee for CRUK Presents



MAMMA MIA! HERE WE GO AGAIN
Dress up and sing your heart out !!!

Wednesday 1st May 2019

The Assembly Rooms - Dedham

Doors open 7pm for 7.30 showing

Bar and Refreshments available

Tickets £10

All profits to



Available from Shakespeare House Gallery,
 Dedham High Street & Marion Livermore 01206 323505

Decision time for a high speed Dedham

Dedham could become one of the first villages in England to have full optical fibre Internet, up to 50 times faster than the present network.

County Broadband, a small East Anglia company, which runs a wireless Internet service around Lamb Corner, is hoping that enough villagers will sign up to justify its projected investment. Unlike the fibre-optic network recently installed by British Telecom, which goes only as far as its street-side cabinets, County's network would take fibre to the houses (FTTP or full fibre). Only 4 per cent of UK houses are currently connected by FTTP and under current government plans it could be 15 years or more before small villages such as Dedham are fully connected.

Full fibre provides very much faster service, because speeds degrade rapidly if they must travel via copper wires from street cabinets to houses.

County is offering a range of contracts - for businesses and homes - with speeds from 30 to 1000 megabits per second (Mbps). It also offers an Internet phone service (VOIP) that would enable customers to dispense with the usual £19 per month line rental and make calls in pretty much the usual way. Fibre is also well suited to piping TV and video into the home. At 30 Mbps, high definition films can be streamed seamlessly to a TV. Another advantage of full fibre is that, unlike the present hybrid network, it is equally fast in both

directions. That makes it much better for backing up data off-line with services such as Google Drive or Dropbox.

County will build the network in Dedham only if it can persuade enough villagers to commit in advance to two-year contracts. It has pencilled in several target districts where it thinks it could find enough demand. These include the Lamb Corner area and the road from there to Ardleigh. However, Mr James Salmon, head of sales, told a meeting in the Assembly Rooms that he will consider building a network in any district, including the centre of the village if enough people (perhaps around a third) sign up. As an incentive, early signers can avoid the connection fee (£220 for up to 70 metres).

So what would be the advantages and possible drawbacks for the village?

First, demand for higher broadband speeds and capacity will inevitably increase as homes connect more devices to the Internet – and new services such as very high definition video are ever hungrier for data. Second, fast Internet would be good for businesses and the increasing number of people working from home. It might even improve house values.

On the other hand, County is a small company, so despite financial backing from Aviva and the EU, it might be able to provide only patchy coverage in the village, unless demand was high.



Optical fibre: is Dedham ready to join the fast set?

Another possible disadvantage is that if County were to get a foothold in Dedham, British Telecom would be less likely to give the village priority for completing a full fibre network. So County could become a local monopoly and it is difficult to know in advance how efficient it would prove in repairing faults. County has so far completed only one small full-fibre network, to 100 houses in the village of Broughton, Cambridgeshire.

The decision for many people will turn on price.

For its cheapest offer, a minimum two-year contract for 30Mbs costs £40 a month. For an extra £5 you get 100 Mbs. That compares with about £35 month that you will pay for a 15 to 22Mbs package in the present system including line rental. Speed depends on how far your house is from the cabinet. (I get 18 Mbs near The Heath).

County's offer looks more attractive if its phone service is added. For an extra £6 you get a basic service with an monthly allowance equivalent to 20 minutes per day of "free" calls to UK landlines; or for £17, an average 57 minutes per day to UK landlines,

mobiles and international landlines. There are more expensive packages for businesses. For domestic customers, the cheapest broadband with the best phone package comes out at £57 per month. BT offered me a similar package for almost the same amount, with a slower Internet but more generous usage limits.

Although County's domestic broadband contracts are billed as "unlimited" the small print says that it reserves the right to "restrict your use of the network" if the monthly downloads are more than 600GB, *and* more than the average downloaded by other customers. Since most people will not know what the average usage is, the 600GB limit is more helpful. That may sound a lot, but it could be used up by watching an average of 3 to 4 hours of very high definition TV per day.

Although County is at present the only option in the village for very fast Internet, its customers could choose between several competing Internet phone services. Vonage, for example, offers a domestic package for £15 a month, which includes "unlimited" calls to UK landlines and mobiles and to 5 overseas countries including the US. The allowance of "free" calls per month averages at 100 minutes a day (compared with 57 minutes for County's comparable package)

County's proposal is now on the table. Dedham must decide whether to pick it up or wait a decade and a half for BT to complete its fibre network.

Max Wilkinson



Essex Rose Tea Room

The Essex Rose Tea Room started life as half of a private house, with its neighbour The East of England Coop building being the other half. It was built in the 15th Century at the time the cloth trade was flourishing in Dedham. With the demise of the cloth trade the house was split into two parts supporting different business enterprises.

The fine timber framed building, known originally as The Corner House, housed a number of businesses over the years, including a saddlery, a stationer and a hardware shop. By the early part of the last century it became The Corner Café. The café was run by a Miss Loe and later by Mr and Mrs Davies, who it is believed changed the name to the Essex Rose Tea Room.

In the late 1960s Del Bower visited the

tearooms when taking his mother out for afternoon tea. He saw the business opportunity in a prime position in the thriving village of Dedham.

Del and his wife Peggy, who had some experience of running a tea room in Kent, bought the business in 1971. They moved into the apartment over the café with their two children, David and Mandy. They set about modernising the premises and putting their own stamp on the business.

They introduced light lunches as well as increasing the range of homemade cakes and scones on sale throughout the day. They increased the seating and also developed a range of art and craft items with a historical link to local artists, such as canvas backed prints of Constable paintings. These gifts were very popular mementoes of a visit to the village and

the Essex Rose. They started a chocolatiers counter with 25 varieties of chocolates and other top-class brands which proved very popular. An ice-cream parlour, with easy street access, proved very popular with visitors to the village.

The expanded business meant that more staff were recruited. For several years Del had several generations of the same family working in the Café especially during the busy season. Del and Peggy became well known in the village and many current residents remember fondly their time spent working in the Essex Rose! The business was very much a family concern. The staff enjoyed tea together at the end of the day and at special times of the year they would dress up and take part in village festivals and events.

During the 70s and 80s the village High Street shops were thriving; parking time was unlimited and Dedham was promoted as a place to visit. Visitors came from the local area as well as from further afield. It was a popular choice for many coach companies. A village association was formed and Del became the Chairman. He was also Chairman of the School Governors at the time the new school was built and also was active in the fund raising for the Dedham Health Centre which is now part of the Ardleigh surgery. He and Peggy retired when the business was sold to Wilkin and Son Ltd. of Tiptree. It became part of their expanding tearoom business and is open 7 days a week, every day of the

year except over the Christmas period. There is traditional table service in warm, comfortable, and well-lit rooms overlooking Royal Square and St Mary's church in the centre of the village. The staff are very welcoming and serve a range of sandwiches, hot and cold snacks, jacket potatoes, cooked lunches, a range of afternoon teas, including homemade scones and cakes. The special: a delicious cream tea, featuring scones served with Tiptree's strawberry jam and Rodda's clotted cream is a firm favourite. The chocolatier counter has been replaced by an extensive Tiptree jam and produce shop with a range of gift selections. Artwork by current local artists is also on sale.

The Essex Rose remains popular with locals and visitors alike. Sarah, the manager, supports village activities when she can. They welcome The Dedham Lunch Club, run by the church pastoral team for elderly Dedham residents on the first Monday of the month. They provide a Christmas party for their regular loyal customers.

The village centre now has a two-hour parking restriction, just long enough for afternoon tea, coffee and a cake, or lunch. The Mill Lane car park is very reasonably priced and is in easy walking distance. The Essex Rose is very busy during the summer holiday period and large parties are advised to book ahead.

They can be contacted on 01206 323101
Email: essexrose@trooms.com
Website is: www.tiptree.com

Nicola Baker

Spring's stunning scent-sations

As usual up came the question "What shall I write for April?" Inspiration was needed by early March as copy date fell during an upcoming holiday. Help!! Fortunately, the problem was solved thanks to a new perennial, *Brunnera* 'Dawson's White', bought last year, if you remember(!), and at *long last* destined for a permanent home. But of course this wasn't to be a 30-second job like it is on TV. Oh no. The intended space was currently occupied by a yellow *Geum*, so that had to be removed, then divided into three: one piece for re-planting and two destined for the May Plant Sale. The hole was duly enlarged, tree roots removed (with difficulty), garden compost added, *Brunnera* planted and *Geum* re-planted; finally the border was weeded and mulched. But this drawn-out process provided the answer to my question; my *horticultural therapy* was taking place slap bang next to a flowering *Daphne* (a type of bay or laurel). Now I have mentioned *Daphne* before, but experiencing the most unbelievable scent warranted highlighting it again. Bought three years ago, it's now some 80 cm high and should make roughly 1.5 m overall after 5-10 years. If you don't mind splashing out, this is worth considering if you can grow it where you pass close by. The pretty flowers are not large but there's lots of them and it certainly has the 'wow' factor for this time of year. *Daphnes* are happy in sun or partial shade but some extra shelter for winter is recommended for some of

the plain green varieties. However *D. odora aureomarginata*, with its evergreen gold-edged leathery leaves, is doing jolly well in its shady spot. Thus an interesting trio evolved in the border with Mr Dawson, snuggling up to *Daphne* while *Camellia* 'R.L. Wheeler' looked on!!

Keeping with the scented theme, I'm reminded of a Sunday morning trip to London one spring which (surprisingly) just *had* to include a detour to the well-known Columbia Road Flower Market in the East End. If you find yourself in that part of London it's worth a visit as all manner of plants are for sale, but be warned it's incredibly busy!! In places the road abuts some private gardens and that morning a most heady scent wafted over a wall, stopping locals and tourists alike in their tracks as they struggled along with armloads of purchases! The evergreen *Clematis armandii* was the source, and, needless to say, any plants for sale were disappearing like snow in sunlight!! Another fairly vigorous north wall candidate, its dark leathery leaves make it ideal for clambering over or up anything; prune hard back after flowering. *C. a.* 'Apple Blossom' is one of the best for perfume.

Another shrub to delight the senses is the evergreen *Sarcococca* (sweet box) with its rich scent wafting from small white flowers December to March – it's hardy, good for shade or in a container to bring close to an entrance when in flower. A few sprigs indoors

are perfect. Not to be forgotten is the aromatic evergreen and wonderfully scented *Choisya ternata* (Mexican orange blossom) – an easy-to-grow garden stalwart also with white flowers in late spring. There are many varieties including *C.t.* ‘Sundance’ with really bright yellow foliage and flowers appearing in early summer; this one really stands out but needs to be in a sunny position for best effect.

Endnote: You might like to know that Daphne was a nymph in Greek mythology who escaped Apollo’s attentions by being transformed into a laurel tree!! A beautiful one at that!



Diary date: Wednesday 3 April when Brian Thurlow will tell us all about *The Perennial Mr. Potter*. Assembly Rooms, 7.30 pm. New members and visitors always welcome.

Elizabeth Ellis
Dedham Horticultural Society

DEDHAM HORTICULTURAL SOCIETY

Affiliated to the RHS



Save the date for our
Spring Show

SATURDAY 6 APRIL
2 – 4.15 pm Assembly Rooms,
High Street, Dedham

*Don't forget it's FREE
to enter the Show*

Find out more ...

Telephone Colin Biggins
on (01206) 322565

www.dedhamgardening.wordpress.com



**ARE YOU
UP FOR IT?**



Sign up for the the British Red Cross

Beat the Brecons Challenge

September 5th - 9th

- Walk the SAS Fan Dance
- Take on a tough canoe trip along the River Wye
- An exciting adrenaline gorge walk

Interested?

Register to secure your place and raise money for the British Red Cross in Essex.

Call **01245 291014**

Email janicegilroy@redcross.org.uk

Website redcross.org.uk/beatthebeacons

Registration fee £200. This covers food, transport, accommodation and equipment. You'll need to raise a minimum of £350 for us.



The power of **kindness**

The Red Cross Society, incorporated by Royal Charter 1864, is a charity registered in England and Wales (204836) (formerly 202017) and the UK's main official helper (2008).

News from the Surgery

It is with great sadness that we announce that Dr Bettle will be retiring on the 28/05/2019. That will also be his last day of work. He will be sorely missed by both staff and patient. There is a comment book in reception for patients to write in their comment and wishes.

We will like to remind patients that if you are running late for an appointment please phone through and inform the surgery. If you are more than 15 minutes late for an appointment the clinician may not be able to see you.

From the waiting room...It was overheard from the waiting room that we have been in the same premises for 40 years and it is about time the government relocate us to premises with abundant and accessible parking.

We wish this was true but unfortunately, GPs are independent subcontractors to the NHS and therefore we have to provide our own premises. Like any other small business you have to make a business plan and as the current climate is supportive of large super practices only we have not been successful so for now we have to stay where we are.

From the dispensary ...From the first of February 2019 the Falsified Medicine Directives law comes into action. This law was brought it to help reduce fraud in NHS medicines management. In practice it means that if your order medications and they are dispensed and placed on the shelf it must be picked up within one week otherwise it will have to be removed from the shelf and disposed of. In the past we were able to return the items to stock cupboard and cancel the prescription. So please do pick up your medication once you have ordered it to avoid wastage.

Ardleigh Surgery



Recent Meetings: Brian Wills presented a lecture of particular local interest on Wednesday 6 March when he spoke about "Constable and his Paintings" and we held our Annual General Meeting on Wednesday 20 March.

Future Meetings: On 3 April Chris Parfitt will introduce us to the "Bhutan, Land of The Thunder Dragon" and David Ablewhite will return again and this time present "The Horrible Hanoverians" on 17 April.

Francis Boardman will talk about "Son Of A Gun - Woman in Nelson's Navy" on Wednesday 1 May and on 15 May Bill Roberts will recall "Memoirs Of An Armed Protection Officer"

Meeting Venue We meet at the convenient St John Ambulance HQ, Manningtree CO11 1EB

New members are welcomed Our Club endeavours to be simple in structure, be free of the constraints and obligations of service clubs, and involve members to a minimal cost. New Members are always very welcome to join us at a future meeting of the Stour Valley Men's Probus Club just join us at 10am on a meeting date. The club is directed primarily to providing fellowship between members who are compatible with each other, and provide the opportunity for development of acquaintances. We meet on the first and third Wednesday of each month in Manningtree at 10 for 10.30am.

Please contact Speaker Secretary Dave Carman on 01255 880202 for further details.



Past Meetings: Toni Neobard & Kate Broad, family historians and authors presented "For Better or Far Worse" on 13 March. This was a light hearted look at marriage through the eyes

of Victorians. What happened if they didn't marry and if you did but not happy with your choice? It was a glimpse at bizarre goings-on showing wedded bliss wasn't always so!

On Wednesday 20 March our first Member's Quiz Night took place at in The Constable Hall. This event was much enjoyed by all present who thanked the organiser June Escott.

Future Meetings & Diary Dates: On 10 April the popular speaker Mark Mitchels will talk to us on "The Genius of Charles Dickens". Dickens rose to become a great novelist by sheer talent and determination. He worked a self-imposed schedule that never relaxed and in the end he probably brought about his early death. But the novels survive, to be rediscovered by each generation. What sort of man was he? His genius is astonishing and this talk uses biography and extracts from his books to re-create the man and his achievements.

Our speaker on 8 May is Dr Helen Geake, National Finds Adviser, Portable Antiquities Scheme. She will talk about local finds recorded by PAS, archaeology found by the public. She will explain what to do if you find an historic artefact whilst gardening, beachcombing or walking the dog. This talk look at how archaeologists reconstruct items and will include details of local finds.

Dr Stephen Ashworth, Senior Lecturer at UEA will talk on "Lies, Damned Lies & Statistics" on 12 June. How good are we at intuitively judging probabilities? Should everyone be able to earn more than the average wage Is it a scandal that doctors/dentists/academics are below the national average? An excursion into statistics & probabilities, which is hoped, will encourage critical consideration of the statistics with which we are bombarded every day.

Each month, the Coffee Grinders meet at The Lambe School, Gaston Street, East Bergholt, CO7 6SD from 10-12 noon. This meeting especially welcomes new members but gives all members the opportunity of meeting the activity Group Leaders and the Committee whilst enjoying a cup of coffee. The next meeting is on Friday 26 April.

Membership: Our main purpose is to encourage lifelong learning for those who are no longer in full time employment and emphasis is always placed on making learning active and fun as well as helping in developing friendships. We have a wide range of groups including language study, country walking, computer studies and gardens, churches and historic buildings visits. In the main, membership is drawn from communities in the lower Stour Valley and adjacent areas including Brantham, Capel St Mary, Dedham, East Bergholt, Holbrook, Lawford, Manningtree, Raydon, & Stratford St Mary. We are affiliated to the ThirdAge Trust, have over 370 members and 35 active groups. For further information please visit www.stourvalleyu3a.org.uk where our membership secretary Val Pretty may be contacted.

Meeting Venue We meet at The Constable Hall, Gandish Road, East Bergholt CO7 6TP at 2 for 2.15pm. Annual membership costs £12 a year and this entitles members to attend the meetings that take place on the second Wednesday of each month, except December. Whilst Visitors are welcome to join us on a limited number of occasions, paying a donation each time, Members are given priority, for safety reasons, due the halls limited capacity.

Remember It's never too late to learn! Join over 400,000 members across over 1,000 U3As throughout the UK today!



IPSWICH
Tuesday 14 May
Corn Exchange, IP1 1DH
7.30 pm–10.00 pm
(doors open at 7.00 pm)

Standard ticket £7

Concession* ticket £4

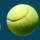
If you are a Care for the Family Partner, unemployed, on a low income or a student, then you are welcome to buy a Concession ticket.


To book cff.org.uk/wisdom

029 2081 0800

	<p>Also at Pedicare:</p> <p>Felicity Watts Reflexology</p> <p>in need of relaxation?</p> 
<p>Tel: 01206 322674 Mob: 07732 039726 Email: nicola.pedicare@gmail.com Web: www.pedicarefootclinic.co.uk</p>	<p>Please contact Felicity for an informal chat about the benefits of Reflexology and how it can help you.</p> <p>T: 07432 098079 E: fjwttsreflexology@gmail.com</p>
<p>Dedicated to the care of your feet</p>	<p>Relax • Restore • Revive</p>
<p>1 Threadneedle (Main) Street Dedham, Colchester CO7 6HH</p>	

DEDHAM TENNIS CLUB



 @DEDHAMTENNIS

2019 membership starts from 1st March.
 To become a member, please visit our website www.clubsparkita.org.uk/dedhamtcc

JUNIOR	£5
SENIOR WEEKDAY	£72
INDIVIDUAL	£106
FAMILY	£180

For more information contact:
 DEDHAM LAWN TENNIS CLUB
 THE DRIFT, DEDHAM,
 COLCHESTER, ESSEX,
 CO7 6AH
 Email: dedham-tennis-committee@googlegroups.co.uk

Diesse Ltd are a specialist wall and floor tile supplier to the interior design and architectural market. Contact us if you would like to make an appointment to discuss your tiling project. There are tiles for wet rooms, kitchens, swimming pool surrounds, patio and garden areas. Our expert team have over 50 years experience to help advise you.

**Diesse Ltd Studio 3B, Dedham Vale Business Centre,
 Manningtree Road, Dedham, CO7 6BL
 Studio Tel no. 01206 805455
www.diesseld.co.uk**



Dedham Parish Magazine thanks the Advertisers for their support

inspire. create. collaborate.

wearemost.com

e. hello@mostgroup.co.uk

t. +44(0)1206 22 44 50

studio house, 42 heckworth close, colchester CO4 9TB

most.

commercial and residential refurbishment.
agile working specialists.

ARDLEIGH CHIMNEY SWEEP SERVICES



- Traditional and Power Sweeping
- CCTV Inspections
- Safety Certificate Issued
- Fully Insured

ANDREW SMITH

01206 231718 · 07845 249820

31 HARWICH ROAD, LAWFORD, MANNINGTREE, ESSEX CO11 2LS

LIDDLEBUILD BRICKWORK

N.V.Q / City & Guild Qualified

All aspects undertaken:
New Builds, Extensions, Garden Walls
Repair, Block Paving, Slab Work

Call for a free quote today

Tel: 07881 095818

Email: liddleiain@hotmail.com

LANGHAM PRIMARY SCHOOL



EXPLORE our potential
PIONEER our talents
DISCOVER our world

Recognised by OFSTED for a
'welcoming environment' and a
well planned provision which **'engages
children's curiosity and imagination'**



Langham Primary School
School Road, Langham,
Essex CO4 5PB

Tel: 01206 272266

www.langham.essex.sch.uk



Personal Training

No Joining Fee

Free Fitness Consultation

Contact Mark

07769703131

mark@fitfaff.com



Tree Surgeon

Blake Tree Care

M: 07515 288736

O: 01787 228341

Providing excellence in:

Tree Felling - Canopy

Reduction - Hedge

Cutting

Tree Shaping and pruning - Stump Grinding

Pollarding - Emergency Storm Damage

Free Consultation for Small and Large Jobs

Public Liability Insurance

info@blaketreecare.co.uk

www.blaketreecare.co.uk

Dedham Parish Magazine thanks the Advertisers for their support



Kingsleigh
Property Consultants

Sales and Lettings

Your local, family-run, independent estate agency in Dedham High Street

Telephone: 01206 940123

Email: sales@kingsleighresidential.co.uk

Website: www.kingsleighresidential.co.uk

THE SUN INN



A REFUGE THAT'S EASY TO FIND BUT HARD TO LEAVE,
WHERE TIME SLOWS DOWN IN THIS RUSTIC RETREAT.

The Sun Inn, High Street, Dedham, Essex CO7 6DF

Telephone: 01206 323351

www.thesuninndedham.com



TONY MASON SERVICES LTD



YOUR LOCAL ENGINEER FOR
OIL BOILER SERVICES
AND

GENERAL PLUMBING NEEDS

MAINTENANCE, REPAIRS & EMERGENCY BREAKDOWN
SERVICE CHARGE **WITH NO CALL OUT FEE**

OIL BOILER INSTALLATIONS

&

KAMCO POWER FLUSH SERVICES PROVIDED

CALL 01206 852798
(24HR ANSWERING SERVICE)



FINE LINE DECORATING

Spray Specialist in :-

Kitchen unit resprays
UPVC Windows
Interior & Exterior Re-dec
Garage Doors

07709337188

info@finelinedec.co.uk

www.finelinedec.co.uk



Please mention **Dedham Parish Magazine** when you contact any of these Advertisers

Dedham Pharmacy High Street, Dedham 01206 322 109

- | | |
|--|---|
| <ul style="list-style-type: none"> <input checked="" type="checkbox"/> Emergency Contraception <input checked="" type="checkbox"/> Shingles & Chicken Pox Vaccination <input checked="" type="checkbox"/> Flu Vaccination (NHS & Private) <input checked="" type="checkbox"/> Sore Throat Test & Treat <input checked="" type="checkbox"/> Travel Healthcare Clinic (vaccinations & anti malarial supply) | <ul style="list-style-type: none"> <input checked="" type="checkbox"/> FREE Prescription Collection <input checked="" type="checkbox"/> FREE Review Of Your Medication <input checked="" type="checkbox"/> FREE Care Home Medicine Service <input checked="" type="checkbox"/> FREE Medicine Waste Disposal |
|--|---|

Monday - Friday 9am - 5.30pm

Saturday 9am - 5.00pm

O E

ORWELL ELECTRICAL LIMITED

Call us for a free quotation

- Electrical Installations
- Electrical Testing
- Lighting Design
- Fire Detection Services
- 24-Hour Call out
- Response Maintenance

95 School Lane, Stratford St. Mary
Suffolk, CO7 6LZ
Tel: **01206 322969**
Mob: **07534424493**
E-Mail: info@orwellelectrical.co.uk
www.orwellelectrical.co.uk



Oreon Interiors



oreonlimited@gmail.com

**12 Church Street
Colchester
CO1 1NF
01206 769458
www.oreon.co.uk**



**Curtains
Blinds
Upholstery
Shutters
Wallcoverings
Sanderson Paint**

Dedham Parish Magazine thanks the Advertisers for their support



Call for a free quotation

Office: **01255 436410**

Mobile: **07939 554197**

Website: www.spenceelec.co.uk

24 Hour Emergency Call Out

**All Electrical Work Undertaken
Domestic & Commercial**

ECA / NIC EIC Approved Electrical Contractor
Fully Insured. New Installation.

Rewires and Upgrades.

Additional Sockets and Lighting.

Garden / Garage Power and Lighting.

Full Electrical Testing and Inspection Service.

Domestic Electrical Fault Finding and Repair.

Prompt Reliable Service




**Dedham
Church of England
Primary School**

Lifelong love of learning

A warm welcome awaits you at Dedham Primary School. Our team of dedicated teaching and support staff, school governors, parents and community work together for the benefit of all our children.

We value an inclusive culture of learning where through a broad range of opportunities each and every child is supported and challenged to reach their full potential.

We look forward to welcoming you to our school.

Headteacher: Mr David Larner

www.dedham.essex.sch.uk

01206 322242

@PrimaryDedham



DEDHAM CHURCH & TOWER TOUR

Visit the 16th century tower with our experienced guides and enjoy views across Dedham Vale
From £3 per person. Family ticket (up to 5 people) from £10

Book via Parish Office ☎ **322 136**

✉ stmaryda@gmail.com

Please mention **Dedham Parish Magazine** when you contact any of these Advertisers



All aspects of building work e.g. extensions, removal of walls etc, plastering, tiling, electrical & plumbing are undertaken as we project manage your kitchen from start to finish.

HUNTERSBROOK

The Kitchen & Bedroom Specialist

01279 442432

sales@huntersbrook.co.uk

"Designers & fitters covering Essex & Suffolk"

Worcester-Bosch • Baxi-Potterton • Chaffateux • Main

24hr CALL OUT




Jackson
Plumbing & Heating

01206 322063

mobile: 07834 612009

01473 214215

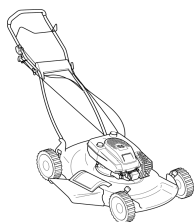
www.jacksonplumbing.co.uk



GRANTS AVAILABLE OAP DISCOUNTS



Glowworm • Vaillant • Ariston • Ferrol • Biasi • Sime • Ideal



Richard Kimberley Services
Lawn Mower Service and Repair Centre
Rotary pedestrian, ride-on mowers, rotavators.
Shear sharpening service. Welding expert.

Proven workmanship. Engineering workshop established over 30 years.

Competitive, fast service, collection and delivery by arrangement.

Telephone: 01206 230964

Email: rks@richardkimberleyservices.co.uk

88 Hungerdown Lane, Lawford, Manningtree, CO11 2LY

DEDHAM VALE TREE SURGERY

NPTC qualified, fully insured
24 hr emergency tree work
Hedge maintenance and reduction
Logs, kindling and woodchip supplied
Stump grinding



All tree work undertaken
Crown reduction and shaping
Crown lifting and thinning
Pruning and pollarding
Felling, sectional dismantling

Specialising in big trees in delicate situations

info@dedhamvaltreesurgery.co.uk
www.dedhamvaltreesurgery.co.uk

mobile 07756 811098
phone 01206 323056

S. J. Smith PLUMBING AND HEATING ENGINEERS

**From an extra radiator
To a full heating system**



- * Boiler changes
- * Bathroom suites
- * Aqualisa, New Team & other showers
- * Electric showers
- * All heating and plumbing repairs



FREE ESTIMATES
CORGI REGISTERED

22 Bullock Wood Close

**COLCHESTER
843 493**

Wendy's Curtains

Professionally made to measure
curtains, roman blinds and soft
furnishings, with a wide range of
fabric samples.

☎ 01206 395996
☎ 07966 718 414
✉ info@wendyscurtains.com
🌐 www.wendyscurtains.com

STEVE'S RUBBISH REMOVALS

Houses • Gardens • Sheds
Garages • Commercial

Licensed waste collector.
Free quotes

01206 322798 / 07980 204057
www.stevesrubbishremovals.com



Diana M Cleaning Home and Office Cleaning



07925624123
dianamarinova61@yahoo.co.uk

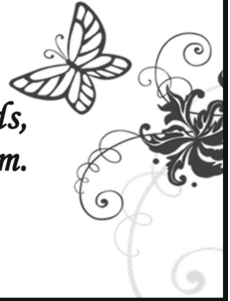
Dedham Parish Magazine thanks the Advertisers for their support

Riverside Designs

for all your interior design, hand finished blinds, curtains and soft furnishings. Based in Dedham.

Tel: 07966 310 206

email: enquiries@riversidedesigns.co.uk



Labels To Love

Boutique & Designer Dress Agency



Lily & Me • Fenella • Miss Sugar • Gaby's • Miss Shortbair

Lingerie by Triumph • Royce • Spanx
Designer New & Pre-loved Clothes

Nicole Fabri • Gucci • Boss • Dior • Karen-Miller

Open Tuesday to Saturday 9.30 am - 5.30 pm

www.labelstolove.co.uk

24 High Street, Hadleigh, Suffolk IP7 5AP
Telephone: 01473 807052



Mather & Co

SOLICITORS

For Conveyancing + other specialised property matters. Family, Wills & Probate and Powers of Attorney.

Efficient, flexible, local, and low cost friendly service.

Free parking at:

Hill House, Grove Hill, Langham, Colchester CO4 5PJ. No parking problems just off A12.

Tel: 01206 322763 Fax: 01206 322895
gillmather@aol.com



Conveyancing Quality



www.mathersolicitors.co.uk



As more support services become digital, it is often assumed that everyone has access to a computer. But some do not.

Please support Beacon House, Colchester,

so that we can help homeless people to access jobs, benefits and housing, or just keep in touch with families and friends.



All our services are free to those in need, but our costs include IT equipment, software, internet services and literacy support.

www.beaconhouseministries.org.uk
Bank account: 23-05-80, 24181162

Dedham Parish Magazine thanks the Advertisers for their support

MARK'S TRAVEL SERVICE

AIRPORTS / LONG DISTANCE /
LOCAL

6 SEATER AVAILABLE

DEDHAM BASED

TEL 07759 688813



HORIZON

LANDSCAPES
EAST ANGLIA LTD.

Design, Construction, Maintenance & Restoration

Tel: **01206 322 646**

Mobile: **07715 121 401**

M.A. Everett



For you, your family and
your business

gotelee
SOLICITORS

01473 822102

Offices in Hadleigh, Ipswich, Felixstowe
and Woodbridge

www.gotelee.co.uk



HILL FARM

LANDSCAPES

*Landscaping &
Fencing Contractors*

01206 303608
www.hillfarmlandscapes.com

HOLIDAY COTTAGE

Long Road East
DEDHAM

Weeks, Weekends & Between Houses.

Tel. **01206 323 345 / 0797 9757 470**

www.holidaycottagededham.co.uk

E Mail owlbarn@live.com

A.Slocombe General Builder

Hard Landscaping,
Roofing and Property Maintenance

Brickwork, Blockpaving Drives, Carpentry
No job too small, for free friendly advice
and estimates phone

01206 322 884 / 07786 871 364

Please mention **Dedham Parish Magazine** when you contact any of these Advertisers

JP WILSON PLUMBING AND HEATING

Gas & Oil Engineer
Bathroom Installation
Boiler Installation
Faults & Servicing
Landlord Safety Certificates
Unvented Systems
Fully Insured

TEL: 01206 322141
MOBILE: 07445 270703
EMAIL: jon@jpwplumbing.co.uk
www.jpwilsonplumbingandheating.co.uk

Chartleigh
East Lane
Dedham
Essex CO7 6BE



Your local tree specialist



SPECIALIST TREE SURGERY • ARBORICULTURAL CONSULTANCY

07841 623027

www.jftreespecialist.com



FULLY INSURED AND COUNCIL APPROVED
FREE ESTIMATES AND EXPERT ADVISE

01206 231720 · INFO@JFTREESPECIALIST.COM

What we do

- ✓ Tree Surveys
- ✓ Planting and Aftercare
- ✓ Fruit Tree Pruning
- ✓ Felling and Dismantling
- ✓ Tree Monitoring
- ✓ Hedge Cutting
- ✓ Stump Removal
- ✓ Fencing
- ✓ Landscaping
- ✓ Logs and wood chip supplied
- ✓ Mobile sawmill service
- ✓ Mowing contracts
- ✓ Crown Reduction, Lifting, Thinning and Cleaning



BIRKFIELD COMPUTER SERVICES

also offering

SENIOR COMPUTING SERVICES.

Help for the more mature user.

We can supply refurbished systems.

Desktops/Laptops repaired.

Problems sorted, bugs removed.

Systems speeded up - **help given.**

W10 can look and run like Windows 7



Call Michael Hockley

01206 298479

birkfield@btinternet.com

01206 323881



dedhamcakecompany.co.uk

Dedham Parish Magazine thanks the Advertisers for their support




MILSOM[®]
HOTELS & RESTAURANTS

Great places to eat, drink and stay™

www.milsomhotels.com



Registered Member 47972
MBACP

COUNSELLOR & COACH

Patrick Lyttle MSc PGDip (Oxon)

Colchester, Dedham & East Bergholt



07887 982 837
patrickhlyttle@gmail.com

**Manningtree
Body Repair
Centre**

**Riverside Avenue West
Lawford
Manningtree
Essex
CO11 1UN**

Tel / Fax: (01206) 393 191

All Vehicle Body Repairs & Refinishing work undertaken including:

- Insurance Work, MOT welding, Panel Beating and Spraying
- Assistance given to "Non-Fault" Third Party Insured
- Collections and Delivery



- CCTV
- Intruder Alarms
- Security Lighting
- Door & Gate Entry
- Aerials & Satellites
- Home Entertainment

For a Free, No Obligation Quote

Please Contact Us on: 01206 322071

07778 931357

www.mjssystems.co.uk

Please mention **Dedham Parish Magazine** when you contact any of these Advertisers

CHARTERED ACCOUNTANT

Dedham based

**Accounting & Tax Services and Financial Consultancy
for small businesses
Affordable rates**

Accounts, self assessment, corporation tax, Quickbooks & Sage accounting software etc.

Call Philip Strangward on 01206 584913 or 07880 550000
for free initial consultation
www.philipstrangward.co.uk



FISHER JONES GREENWOOD SOLICITORS

Legal advice for you, your family and your business



With top tier Legal500 and Chambers & Partners rankings, our friendly and experienced team offer a full range of commercial and individual legal services, no hidden costs, Saturday opening hours and fixed fee packages.

Get in touch with the local experts today to see how we can help.

www.fjg.co.uk ■ 01206 835300 ■ info@fjg.co.uk

Charter Court ■ Newcomen Way ■ Colchester Business Park ■ CO4 9YA ■ Free parking available

THE DEBBIEMILLARSCHOOL OF DANCE

CLASSICAL BALLET • TAP • MODERN • THEATRE • DISCO

Dance classes for ALL ages & abilities
For fun, recreation, progressive ISTD examinations

**Toddlers
Pre-school
Children
Teens
Adults**

**Ballet & Tap
Modern
Jazz
Disco/Street
Musical theatre**



**Tel: 01206 230806 Email: debbie@debbiemillar.co.uk
www.debbiemillarschoolofdance.co.uk**

Dedham Parish Magazine thanks the Advertisers for their support

R J Woods & Co Accountants

- Accounts
- Self Assessment Returns
- Company Tax Returns
- VAT
- Book-keeping
- Tax Planning
- Payroll

Confidential advice
Free initial consultation
Call Rob or Tracy Woods

Tel: 01206 322 604

Email: info@rjwoodsandco.com
Website: www.rjwoodsandco.com



Orchard Barns Kindergarten is a small nursery group of two unique nurseries located in the beautiful villages of Ardleigh and Stratford St. Mary offering outstanding care and education for children from 3 months to 5 years.

Come and visit us, it really is the best possible way to learn about us and get a true feel for these exceptional nurseries.



CALL FOR MORE INFORMATION
01206 231911 for Ardleigh
01206 323093 for Stratford
www.orchardbarns.co.uk
email: info@orchardbarns.co.uk

Open to All
regardless of
catchment area



From age
2 years...



***** Longer Opening Hours Now Available *****



www.ardleighpreschool.co.uk

Tel: 07517 430114



Ardleigh Village Hall, Station Road, Ardleigh, Essex, CO7 7RS

DEDHAM IRONING SERVICE

TIRED OF IRONING?
Let us do it for you!



Ring Helen on
01206 322 554



Britannia Flooring

CARPET FITTING
SUPPLY & INSTALLATION
CARPET & VINYL SPECIALIST
FLOORING ACCESSORIES

Tel: 07740 829 499 - 07933 157 121
www.britanniaflooring.co.uk
(Based In Dedham)

Please mention **Dedham Parish Magazine** when you contact any of these Advertisers

JANE BURTON

TRADITIONAL FLOORING

*Carpet, Stone, Wood, Amtico,
Slate & Marble, Vinyl, Rugs*

*Designed to your personal requirements
Welmans, Lamberts Lane, Great Tey, COLCHESTER.*

Tel: (01787) 222 770 Fax: (01787) 222 760



**DEDHAM'S EAGER BEAVER
HANDY MAN SERVICE**



- * Grass Cutting
- * Hedging
- * Garden Maintenance

**ANY JOB YOU HATE
WE CAN DO**

**Ring Philip: 07939 250 018
After 6pm 322 554**

HUNNABALL FUNERAL SERVICE

York House, 41 Mersea Road,
Colchester, CO2 7QT



*We are an established family firm
dedicated to upholding the traditional
values of respect and dignity and*

Tel: (01206) 760 049 (24Hrs)
For immediate personal attention



The Essex Lottery is a weekly lottery run by Essex County Council to help the county's charities

Sixty percent of ticket sales goes to good causes that benefit Essex residents – more than double the proportion for the National Lottery. 50p from every £1 goes to the good cause chosen by the lottery player and 10p goes into a central fund for smaller causes. Local charities or good causes can register free of charge.

More details online: www.essexlottery.co.uk

Dedham Parish Magazine thanks the Advertisers for their support

Accredited & HCPC Registered Podiatrists



THE FOOT CLINIC @ DEDHAM

Dedham Doctors Surgery, Roman Place, Manningtree Road,
Dedham, CO7 6DU.

Don't suffer with foot problems, aches and pains - book an appointment with one of our podiatrists for a thorough foot health check.

Providing individual and personal care across Essex since 1985.

01206 854300

www.colchesterfootclinic.co.uk

info@colchesterfootclinic.co.uk

I.C.P. PLUMBING & CENTRAL HEATING

LTD.

Installation, breakdown, service, maintenance

Natural Gas, Oil & LPG specialists

GAS SAFE REGISTERED



Contact Ian Phillips on:

07885 228 646 (mobile)

BOILER SERVICE or BREAKDOWN 07885 228 646

Our boiler specialist provides a breakdown and maintenance service

Victoria Baker PILATES

Personally designed courses to improve posture, joint alignment, movement and strength.
Group and Individual sessions in a private, comfortable studio.

Cedar Building, Foxash Estate
Harwich Rd, Lawford
Colchester CO11 2LR



office 01206 322244
mobile 07887 987280
www.victoriabakerpilates.com

Please mention **Dedham Parish Magazine** when you contact any of these Advertisers



DEDHAM OSTEOPATHY

Dedicated to getting you better

Luke Jackman Bsc Hons Ost
Registered Osteopath

Tel: 01206 322836/07974 144593
www.dedhamosteopathy.co.uk

Osteopathy and Western Medical Acupuncture clinic ideally located in the heart of the Dedham countryside, providing treatment for you and your family.

- Back pain and sciatica
- Neck and shoulder Pain
- Pain & Stiffness from Arthritis
- All joint, muscle/ligament strains
- Tennis/ Golfers Elbow
- Trapped nerves
- Tendonitis
- One hour initial appointment
- On-site free parking
- Open weekdays, evenings and weekends



Helen Sims Flowers

BEAUTIFUL FLOWERS
FOR ALL OCCASIONS



T: 07899 061840

E: helensimsflowers@btinternet.com
www.helensimsflowers.co.uk

To advertise here
please contact
dedhamadverts@gmail.com



Dedham Vale Homecare Ltd
'Care with Integrity'

TAILORED CARE • MEAL PREPARATION • SUPPORT TO APPOINTMENTS
LIGHT HOUSEWORK AND LAUNDRY • TRIPS OUT • SHOPPING

Providing support, companionship & care
to people in their own homes.

A bespoke service to meet identified individual
needs with dignity and privacy.

www.dvhc.co.uk
info@dvhc.co.uk 01206 299683



Dedham Parish Magazine thanks the Advertisers for their support

PENROSE & PARTNERS VETERINARY SURGEONS

ALL CONSULTATIONS BY APPOINTMENT
COMPREHENSIVE SERVICE INCLUDING 24HRS EMERGENCY

PEELER'S END
UPPER STREET
STRATFORD ST MARY CO7 6LW
TEL: (01206) 323 414

70 BRINKLEY LANE
HIGHWOODS
COLCHESTER CO4 9XE
TEL: (01206) 842 608

Essex & suffolk PEST SOLUTIONS

Your local pest control experts
for home & business

- Free advice, fast response
- Highly accredited (NPTA)
- Fully qualified & insured
- Discreet — unmarked vehicles

Tel: 01473 328092 (Holbrook)
Email: info@eandspestsolutions.co.uk

Pattern Perfect Ltd.

Painting, Decorating & Property Maintenance

BOOK NOW FOR BIGGER DISCOUNTS

01206 396386

07876 030073

All interior and
exterior projects
large or small
repairs
makeovers
redcoration
insurance work

City
Guilds
Qualified



36 Munnings Way, Lawford, Essex CO11 2LQ

Fully Insured

FREE Estimates

Affordable prices

Professional quality

Discounts for local people

www.patternperfect.co.uk
patternperfect@hotmail.com

Richardson & Rothwell



bpec



184271

Plumbing and Heating Limited
Unit 1, Manningtree Road, Dedham

Make us your first call for plumbing & heating requirements.

We are your reliable local plumbers. We undertake all plumbing works from heating systems and bathroom suites to solar heating, air source & ground source heat pumps.

We offer a free quotation service so please call us to find out more details.

Tel: 01206 323732 Fax: 01206 323735 email: steve@richardsonandrothwell.co.uk

Please mention **Dedham Parish Magazine** when you contact any of these Advertiser

Andrew Ablett
Servicing & Repairs
 Foxash Workshop,
 Foxash, Lawford, CO11 2LR
TEL: 07917 223274
 Servicing, Repairs, Diagnostics
 Cars - Vans - Motorcycles

BED & BREAKFAST
 LOVELY GEORGIAN HOUSE
 CENTRE OF DEDHAM
 Tel: Sophie 01206 323368
 E-mail: jandsgeary@hotmail.com

Leisure Hire



Marquee and Equipment Hire

- Marquees erected on most surfaces •
- Awnings • Walkways •
- Extensions to Buildings • Linings •
- Lighting • Furniture •
- Flooring & Staging • Heating •

Summer or Winter
 Weddings Anniversaries Corporate
Brochure upon request
(01206) 242 196
 leisurehire@gmail.com

Mobile
fresh fish shop



Dedham High street
THURSDAY 2pm - 2.30pm

Straight from Lowestoft fish market!
 A wide selection of fresh fish, smoked
 fish and seasonal shell fish.

Every Thursday
2pm- 2.30pm
 by the Dedham memorial
 Deliveries also available in the
 Dedham area on Thursdays.

 **303104 or 07967755771**



Steve Hutley (BCCSDip.CanBhvPrac)
DOG BEHAVIOURIST
 Website: www.stevehutleydogrehab.co.uk
 Facebook: 'Rehabilitation and Training'
 Email: steviehut@yahoo.co.uk

DOES YOUR DOG POSSESS THE FOLLOWING BEHAVIOURAL PROBLEMS?
 Dog on dog aggression?; People aggression?;
 Lead Pulling?; Constant barking?; Fears or phobias?;
 Jumping Up?; Separation Anxiety?; Resource Guarding?

If you answered YES to ANY of these questions,
 then please don't hesitate!
Give me a call on: 07859879559.

Nigel Bruce
 Industrial & Domestic
ELECTRICIAN
 'The Swift', Upper Street,
 Stratford St Mary,
 Colchester CO7 6JW
Tel: (01206) 322 751

travel counsellors



With us...it's personal

Travel, tailor made for you, with care

01206 809220

sarah.yandell@travelcounsellors.com

www.travelcounsellors.co.uk/sarah.yandell



preschool

30 funded hours for 3 & 4 year olds
15 funded hours for eligible 2 year olds
8.45am to 3.00pm (term time only)

JOIN US FROM 2 YEARS OLD

OFSTED
OUTSTANDING

VILLAGE LOCATION JUST OFF THE A12, WITH A
WONDERFUL GARDEN AND OUTSIDE CLASSROOM.



TEL : 01206 322466

admin@abcpreschoolstratford.co.uk

www.abcpreschoolstratford.co.uk

CHARITY NO: 1159203



Your local, independent fuel supplier



Heating Oil



Aga Cooker
Fuel



Gas Oil &
Diesel



Lubricants
& AdBlue®



2018
Gold
Trusted
Service

feefo



www.rix.co.uk



01953 457057

P.J. SAMPSON BUILDERS

COMPLETE BUILDING SERVICE

30 Years' Experience

Tel: 01206 230619

66 Tile Barn Lane Lawford

Brick work Specialist
Painting & Decorating
Plastering and Carpentry
Plumbing & Electric's
Roofing

All Property Maintenance

Please mention **Dedham Parish Magazine** when you contact any of these Advertisers



Cakes by *Abi*

www.abisartoncakes.webs.com

*Creative bespoke cakes
which taste as stunning as they look.*

*Formerly a Pastry Chef at Claridge's specialising in
stylish cakes and patisserie for all occasions. Based in Dedham.*

Mobile: 07870217003 Email: abisarton@gmail.com



fiducia

wealth management & wealth preservation

Inheritance Tax Clinics

We are offering a series of complimentary clinics on Inheritance Tax by one of our Chartered Financial Planners. If you would like to accept our invitation contact Heather Ward by telephone or at Heather@fiduciawealth.co.uk.

Fiducia is a multi-award winning independent financial planning practice based in Dedham.

T: 01206 321045 **E:** email@fiduciawealth.co.uk **W:** www.fiduciawealth.co.uk

Authorised and regulated by the Financial Conduct Authority

THE
Munnings
ART MUSEUM
DEDHAM • ESSEX

OPENING TIMES

23 March - 3 November 2019 2pm-5pm.

Wednesday to Sunday and Bank Holiday Mondays

Adults £8 (inc seniors) Children £1 Concessions

for students and National Art Pass holders

- Group bookings welcome • Car and coach parking
- Cafe and shop
- See website for 2019 events and booking details

www.munningsmuseum.org.uk

enquiries@munningsmuseum.org.uk

01206 322127



Behind the Lines:

ALFRED MUNNINGS WAR ARTIST, 1918

Sir Alfred Munnings forged much of his early reputation from time spent as a war artist in France during 1918. In 2019, for the first time in 100 years, 41 paintings by Munnings are returning together from the Canadian War Museum, Ottawa. In this once-in-a-lifetime display the finished paintings will be shown side by side with the surviving sketchbooks, from the museum's own collection, that inspired them. An additional 150 of Munnings' life's works will be hung chronologically throughout the museum to give a sense of the man and his art.