

## CLUBS & SOCIETIES

*Martin Broom writes*

### DEDHAM FOOTPATH GROUP

Meet in car park Case is Altered PH in Bentley Suffolk for a walk of under two hours on **Friday 1st January 12.15pm**. Pub afterwards -check with walk leaders about lunch. John Osborn ☎ **07919521607** and Marlene Townes ☎ **07938808157**

*Graeme Forsyth writes*

### STOUR VALLEY MEN'S PROBUS CLUB

*Recent Meetings*

On Wednesday 4 November, Joy Bounds gave a topical talk following the release of the film Suffragettes on "The Ipswich Suffragettes" and Tom Hodgeson's presentation "Colchester Castle 2015" two weeks later was much enjoyed by members.

*Future Meetings*

On **Wednesday 2 December**, Tom Stanbury will introduce us to the delights of "The East Anglian Railway Museum" and two weeks later on 16 December Robin Finch will entertain members.

New members are welcomed by Stour Valley Men's Probus Club, we meet on the first and third Wednesday of each month in Manningtree at 10.30am. Contact secretary Brian Rolfe on **393665** for further details.

*Vivien Chapman writes*

### LADIES FELLOWSHIP

Over the years, we have lost more members than we have gained, and after much thought and deliberation once more, it has been decided that we will no longer meet in the Reading Room at the

Assembly Rooms, but in members' homes. It may be that, occasionally, we will hire the hall and invite a speaker, then everyone will be made very welcome, so do look out for this in the months to come.

Our last meeting in the hall was in October, whilst in November, we enjoyed an early Christmas Lunch at Mistley Place Park and in December, we will join the Christmas Coffee Morning at the Duchy Barn and then start off in January 2016 with our new format.

We have lost many lovely members over the years, the most recent being Mary Mayhew, Ruby Hild, Sylvia Newton, Pat Jones, Ivy White and Mary Hood. They are all very fondly thought of and will continue to be so as we start a new chapter in the life of the Dedham Ladies' Fellowship.

I would like to thank my wonderful Committee, for all their hard work and friendship over many years, namely Audrey Mattack, Betty Callaghan, Kay Toogood and Daphne Langton.

*Audrey Mattack writes*

There will be no meeting on the 30th December but members are invited to the Duchy Barn for coffee and carols on **Tuesday, 15th December**.

*Betty Callaghan writes*

### THE GOOD NEIGHBOURS CLUB

At our recent meeting an outing to the theatre was kindly arranged by Val Blaker. As our next meeting is on **Friday, 11th March**, we would like to take this opportunity of wishing a very Merry Christmas and happy New Year to all.

## DEDHAM PARISH CHURCH

[www.dedham-parishchurch.org.uk](http://www.dedham-parishchurch.org.uk)  
e-mail: [dedhamparishchurch@outlook.com](mailto:dedhamparishchurch@outlook.com)

**MINISTERS** (01206) ☎  
Vacancy Vicar and Lecturer  
Paul Southern Assistant Minister  
Merv McKinney Assistant Minister  
c/o Parish Office, High Street, Dedham CO7 6DE 322 136

**CHURCH OFFICERS**  
Richard Hopkins Churchwarden 322 361  
Quinlan Terry Churchwarden 322 370  
Be Burleigh Deputy Churchwarden 323 205  
Suzanne Woods Deputy Churchwarden 01255 870 640  
Gabbie Watson Verger 322 425  
Andrew Hodson Caretaker & Groundsman 07968 445 572

**MUSIC**  
Antony Watson Director of Music 322 425

**JUNIOR CHURCH**  
Tim Sarson ReVive@5 322 810

**FLOWER ARRANGERS**  
Sally Gotelee Co-ordinator 322 652  
Wendy Sarton Weddings 323 027

**DEDHAM PARISH MAGAZINE**  
Melanie Hargreaves ([dedhameditor@gmail.com](mailto:dedhameditor@gmail.com)) Editor ↓  
Max Wilkinson 'What's On' Listings ↓  
Martin Hole Advertising ↓

**PARISH OFFICE** at the Vicarage **NEW OFFICE HOURS** 322 136

2 pm - 4 pm Monday  
9:30 am-12 noon Tuesday  
11 am - 1 pm Thursday

Parish Secretary Claire Arculus  
Asst. Secretary Be Burleigh, Louise Davison  
Financial Administration Sara Marshall, Katrina Ablett

**DEDHAM C.E. PRIMARY SCHOOL** [www.dedham.essex.sch.uk](http://www.dedham.essex.sch.uk)  
Jason Skelton Chairman ↓  
Heather Tetchner Head Teacher 322 242

**ASSEMBLY ROOMS** [www.dedham-assemblyrooms.info](http://www.dedham-assemblyrooms.info)  
Tracy Woods Clerk to the Trustees 323 921

**DUCHY BARN**  
Carol Mitson Secretary 323 116  
Anne Rowledge Bookings 322 394

Printed by *IndigoRoss* 01787 880 260

## DEDHAM PARISH MAGAZINE December 2015

### SUNDAY SERVICES

8.30 a.m.

Holy Communion BCP  
1st Sunday in month

10.30 a.m.

Family Service

1st Sunday in month

Morning Worship CW

2nd & 5th Sundays

Holy Communion CW

3rd Sunday in month

Morning Prayer BCP

4th Sunday in month

5 p.m.

Evening Prayer BCP

1st Sunday in month

5 p.m.

Re:Vive @5

4th Sunday in month (no session in December)

### JUNIOR CHURCH

10.30 a.m.

Family Service

1st Sunday in month

DEADLINE FOR  
NEXT EDITION:  
13TH JAN 2016

This magazine can be read *in colour* at [www.dedham-parishchurch.org.uk](http://www.dedham-parishchurch.org.uk)

## CHURCH NOTICEBOARD

SPECIAL SERVICES OF WORSHIP :

*Friday 25th December - Christmas Day*

TOWER FLAG DAY THIS MONTH

*Friday 25th December - Christmas Day*



### *From the Registers*

#### BAPTISMS

1st November 2015 - Jenson Freddie ROBERTS

#### WEDDINGS

7th November 2015 - Robert John LEETE and Grace Ivy CHARTERS



Great things can grow from a small decision...

Please Remember  
DEDHAM PARISH CHURCH  
in your Will

## GOD IN THE ARTS

### 'He gave us eyes to see them': 'The Virgin of the Lilies' by Carlos Schwabe

During this year we have been exploring how art can celebrate the wonder of this world. This month with our Lady and Jesus we stand above the world: high on the clouds with a glorious path of tall, elegant lilies that lead like a stairway to the earth beneath. This is 'The Virgin of the Lilies' by Carlos Schwabe. He was born in Germany and then lived in Switzerland and France, painting this canvas in 1899 when he was 33 years old.

It is like a scene caught when we look out of the window in an aeroplane. We can see the earth beneath and spot hills and valleys, roads and settlements, and a river weaving its way through the countryside. Mary and Jesus are haloed in a lunar-like radiance. The lilies are symbols of purity and obedience, the qualities that will take them to that scene at Bethlehem which we give thanks for at Christmas. The heavenly light shining out in the painting brings hope and joy to the world below, transforming lives with the wonder of the Saviour's birth.

Jesus holds three nails in his hand as a sign that His life will be tempered by rejection, suffering and death. But the lilies growing tall and straight in the skies are signs of new life and resurrection. The light come down to earth at Christmas can never be extinguished. That light and love are expressed in this vivid, moving painting of Carlos Schwabe as they are caught up in the carol of Christina Rossetti we sing at this time: Love shall be our token, Love be yours and love be mine,





Dec15 @deborah noble • parishpump.co.uk

*David Druitt writes***REPLACING THE VICAR & LECTURER**

In the article that appeared in the October magazine, I said that further updates on the progress of replacing the Vicar & Lecturer would be given and there has been some, albeit slow, progress made in the last two months.

A meeting of the PCC and the Lectureship Trust was held with Bishop Roger, the Bishop of Colchester, and with the Archdeacon and the Rural Dean on the 1<sup>st</sup> October and whilst limited progress was made at the meeting itself, the way ahead was clearer.

Shortly after the meeting, the Harwich Deanery, of which Dedham is a part, published its long awaited Deanery Plan and this took into account the vastly reducing number of stipendiary clergy within the Church of England and the need for Parishes to work together to mitigate the effects of this.

As a result of the Plan being published, the Lectureship Trust subsequently received a letter from the Diocesan Bishop, the Bishop of Chelmsford, informing us that he had decided to "suspend the rights of presentation" of the Trust in its role as Patron.

This suspension, which can only happen on the back of the pastoral re-organisation within the Deanery, lasts for a period of up to five years and means that the responsibility for appointing a Priest-in-Charge, rather than a Vicar, rests with the Diocesan Bishop, although we have been assured on a number of occasions that this would not be done without consultation with, and the agreement of, the Trust

and the PCC.

The Plan proposed that there should be two stipendiary clergy allocated to the Parishes of Lawford, Dedham, Ardleigh and The Bromleys. Our Deanery Synod representative, Brian Moore, attended a Deanery meeting soon after the Plan was published and provided an initial response to the proposal and following this, in early November, there was a meeting of the PCC and a representative of the Trust with the Archdeacon.

At that meeting two options for the allocation of the two stipendiary clergy mentioned above were discussed and the Archdeacon is going to talk to the other Parishes concerned before any final decisions are taken.

Whilst it might appear that only limited progress has been made in the last two-three months, we are far further ahead than we were in late September and the Trust and the PCC are determined to ensure that the best solution both for the Parishioners of Dedham and for those of neighbouring Parishes is found, taking into account the difficulties currently being experienced by the Church of England.

In so far as the Trust will take a back seat role from here on in, it is appropriate that any future updates on the progress of finding a new Priest-in-Charge come from the Churchwardens or the PCC. In the meantime however please do not hesitate to contact either myself or either of the Churchwardens, Richard Hopkins and Quinlan Terry, if there are any matters relating to this topic that you would like to discuss. *David Druitt*

– *Chairman, The Lectureship*



# Dedham Christmas Market

ON THE HIGH STREET

SAT. 5th DECEMBER

3PM - 6PM



Merry  
go  
Round

Hot Food

Home made Cakes

Santa's Grotto in the Duchy Barn

Wreaths

Games

Craft stalls

Spectacular Hamper Raffle

H  
O  
P  
C  
O  
M  
P  
A  
N  
Y

**Shops open & Much More!**

Spaces can be booked through

Kim Spencer ☎322773

All Proceeds to Dedham (C of E) Primary School

## In the Assembly Rooms Dedham



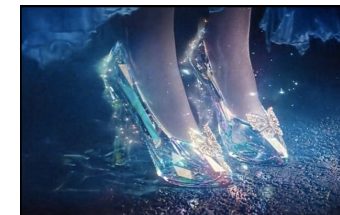
Admission 7pm—Films begin 7.30pm Tickets £4  
available from Shakespeare House Gallery  
or online at [www.dedhamfilms.co.uk](http://www.dedhamfilms.co.uk)

Wednesday  
16 DECEMBER 2015

### CINDERELLA (U)

Directed by Kenneth Branagh 2015

A beautiful production of this magical version of our favourite Fairy Tale starring Lily James (Rose in Downton) and Kate Blanchett as the wicked Stepmother.



Wednesday 20 JANUARY 2016

### SUFFRAGETTE (12A)

Directed by Sarah Gavron 2015

A drama that tracks the story of the foot soldiers of the early feminist movement, women who were forced underground to pursue a dangerous game of cat and mouse with an increasingly brutal State. These women were not primarily from the genteel educated classes, they were working women who had seen peaceful protest achieve nothing. This film does an important job in reminding us of their bravery and tenacity: a drama about human rights so recently and dearly won.



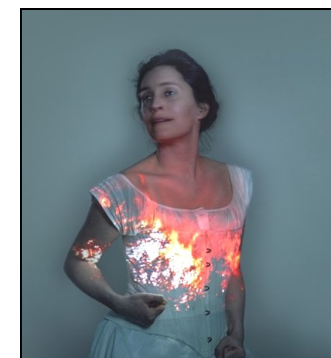
Tuesday 8  
DECEMBER 2015

### JANE EYRE

(National Theatre Live Encore)

Almost 170 years on, Charlotte Bronte's story of the trailblazing Jane is as inspiring as ever. This bold and dynamic production uncovers one woman's fight for freedom and fulfilment on her own terms.

Admission 6.30pm—Play begins at 7pm Tickets  
£10 available from Shakespeare House Gallery  
or online at [www.dedhamfilms.co.uk](http://www.dedhamfilms.co.uk)



Refreshments available before the Films and Screenings and during the intervals

Contacts: Jax Horswill 322328 or [dedhamfilms@gmail.com](mailto:dedhamfilms@gmail.com)

To find out more about the films and live screenings visit [www.dedhamfilms.co.uk](http://www.dedhamfilms.co.uk)

## WHAT'S ON :

### OPERA / MUSICAL continued

❖ **Tue 19 to 30 Jan:** 7.30 pm  
**Colchester Operatic Society:** *Sister Act*, a musical based on the 1992 film; Mercury Theatre, Colchester.



❖ **Sat 30 Jan:** 5.55 pm **The MET** - live link: Puccini's *Turandot* with Nina Stemme (above) as Turandot; Firstsite.

### BALLET

❖ **Sun 6 Dec:** 3 pm **Bolshoi Ballet** - live link: *The Lady Of The Camellias*; Odeon, Colchester and Firstsite.  
❖ **Sun 24 Jan:** 3 pm **Bolshoi** - live *The Taming Of Shrew*; Odeon, Firstsite.  
❖ **Tue 26 Jan:** 7.15 pm **Royal Ballet** - live link: *Rhapsody & The Two Pigeons*; Odeon & Firstsite.

### FILM

❖ **Fri 4 Dec:** 8 pm **East Bergholt Cinema:** *Far from Madding Crowd*; Constable Hall.  
❖ **Sat 5 Dec:** 2 pm **Firstsite,** Colchester: *Inside Out* - animation about the inner voices of emotion.

**Wed 16 Dec:** 7.30 pm **Dedham Films:** *Cinderella* dir. Kenneth Branagh (2015); Assembly Rooms.

❖ **Fri 18 Dec:** 7.30 pm **Polstead films:** *Woman In Gold*; Village Hall.  
❖ **Sun 27 Dec:** 2 pm **Firstsite:** *It's a wonderful life* dir Frank Capra.

❖ **Wed 20 Jan:** 7.30 pm **Dedham Films:** *Suffragette* dir. Sarah Gavron; Assembly Rooms

### THEATRE

❖ **Tue 1 to 3 Dec:** 7.45 pm **Lakeside Theatre,** Colchester: *Terminus* - student production.  
❖ **Thu 24 Dec:** 2 pm **Branagh Theatre Company** - live link: *A Winter's Tale* by William Shakespeare with Judi Dench; Firstsite.

**Tue 8 Dec:** 7 pm **National Theatre,** London - live link: *Jane Eyre* adapted from Charlotte Brontë's novel; Dedham Films Live - Assembly Rooms and at Odeon, Colchester and on 15 Dec at Firstsite.

❖ **Thu 28 Jan:** 7 pm **NT** - live link: *Les Liaisons Dangereuses* Christopher Hampton's adaptation of Laclos's novel; Odeon, Colchester and Firstsite.

### LECTURE

❖ **Fri 4 Dec** 4 pm **Stour Valley Arts and Music:** Professor John Deathridge - *Historic buildings and composers*; East Bergholt Church.

## NEWSROUND

The Christmas Flower Meeting will be at Sally Gotelee's house (Whalleys) on **Tuesday, 8 December** at **10.30 a.m.**

*Ruth Higginson writes*  
**WEA DEDHAM BRANCH**

The Spring course will be starting on **Wednesday 20th January** and is entitled "Brunel: An Engineer's Life" and the lecturer is Roger Mannion. This ten week course will be looking at the man, his successes and failures, all within the economic and political situation of the day. Our courses are held at Munnings Museum on Castle Hill, Dedham on a Wednesday morning. We start at **10am** with coffee and the lecture finishes at **12pm**. If you are interested in our Spring course please contact Colin Biggins on **(322565** or Ruth Higginson **(322598)**.

*Colin Biggins writes*  
**HORTICULTURAL SOCIETY**

Our next meeting will be at the Assembly Rooms on the 2nd December starting at **7.30 pm**. The guest speaker is Rob Sherriff from Honey Tye Flowers talking about growing and cultivating dahlias. The evening will round off with a seasonal feel with mince pies and wine provided! There will also be a superb raffle. Admission is £2 for members and guests. All welcome.

*Lou Davison writes*  
**DEDHAM FUNDRAISING COMMITTEE**

Come to a fun salsa evening on Friday 4th March at the Assembly Rooms from 7-11pm. Warm up & lesson at 7.30 pm. Bar Available. Tickets £10. Available from Jill Strangward. All proceeds to Dedham Parish Church.



## DEDHAM PARISH CHURCH CHRISTMAS TREE FESTIVAL

5-6 DECEMBER 2015

Entries from individuals, clubs, businesses and children. Prizes will be awarded for the best decorated tree in each category :

Individuals or families / Groups or businesses / Children up to the age of 12

### **Dedham Parish Church**

Christmas Tree Festival 5 - 6 December

FEATURING DEDHAM SONGBIRDS, 5 DECEMBER

*Come and vote for your favourite tree!*

## PARISH COUNCIL

*Nicola Baker writes*

### ESSEX PLAYING FIELDS ASSOCIATION AWARDS

Dedham again achieved an excellent result at the annual Essex Playing Fields Association awards, with a number of gold awards, including one for the children's playground. Well done to all those individuals who commit their time and effort to maintaining the village playing fields to such a high standard. The certificates are displayed on the Royal Square noticeboard.

### FLOWER TUBS

The village tubs, including the War Memorial planters, have been planted up for winter and spring with plants which will withstand the winter and with spring bulbs to look forward to.

### IMPROVEMENT PROJECTS

The Parish Council has submitted funding applications to appropriate organisations for two specific projects. The first is to smarten up and to

improve the sports pavilion and the second is to professionally clean the War Memorial in Royal Square, which was last done in 2007. Any funding secured will be supplemented with Parish Council resources.

*Christine Frost writes*

### LIVING WELL IN DEDHAM

This event, held in November was an overwhelming success with around fifty local people listening to informative and interesting presentations from a number of organisations, including Community Agents, Essex Fire and Rescue, Age UK and more. Other agencies, including Ardleigh Surgery, Neighbourhood Watch and the Alzheimers Society were also there to give out information about their services. Feedback was very positive with most people saying that they had learned something new. Thank you to all who supported the event and to the East of England Co-op for the biscuits.



### 15TH ANNUAL DEDHAM QUIZ: SATURDAY 6TH FEBRUARY DEDHAM ASSEMBLY ROOMS

Test your knowledge against the Dedham Quiz Master. Funds raised will be applied to the charities Riding for the Disabled & Face The World  
Questions start at **7.30pm**. £50 for each table of six (includes light supper)

BAR & RAFFLE available at the venue  
Contact: Chris & Emma Wheeler ☎322345 [dedhamquiz@gmail.com](mailto:dedhamquiz@gmail.com)

## WHAT'S ON : MUSIC AND OPERA

### CHRISTMAS CONCERTS cont

❖ **Fri 18 Dec:** 7.30pm **Passamezzo:**

17th century music, readings and songs; Stoke-by-Clare Church.

❖ **Sat 19 Dec:** 6 pm **Aldeburgh Voices:** Bach; Snape. 7.30 pm

**Bury Bach Choir;** St Mary's, Bury,

7.30 pm **Headgate:** Carols by Somerhouse Productions.

❖ **Sun 20 Dec:** 2.45 pm **Stowmarket Chorale;** St Peter's, Sudbury.

### MUSIC

❖ **Sat 5 Dec:** 7.30 pm **Tiptree Choral Society:** Gounod, Vivaldi; St Luke's Church, Tiptree 7.30 pm **Stour Choral Society:** Puccini's *Messa di Gloria*; Mistley Church.

❖ 7.30 pm **Kingfisher Sinfonietta:** 80th Birthday Concert for Elgar

Howarth; Framlingham College.

❖ **Fri 11 Dec:** 7.30 pm **Studio Music:** Piano - four hands, Brightlingsea.

❖ **Sat 12 Dec:** 7.30 pm **St Botolph's Music Society:** Mozart's *Missa Pastoralis & Exsultate Jubilate*, Colchester.

❖ **Sat 9 Jan:** 7.30 pm **Trianon;** Ipswich Corn Exchange.

❖ **Sun 10 Jan:** 4 pm **Stour Valley Arts and Music:** Antara Duo, harp & flute; Constable Hall, East Bergholt.

❖ **Sat 16 Jan:** 7.30 pm **Colchester**

**Symphony Orchestra:** St Botolph's, Colchester.

❖ **Fri 22 Jan:** 7.30 pm **Studio Music:** The Busch Ensemble, Brightlingsea.

❖ **Sat 30 Jan:** 7 pm **University of Essex Choir:** Mozart: *Requiem & Ave Verum Corpus*; Ivor Crewe Lecture Hall, Colchester.

7.30 pm **Ipswich Chamber Music Society:** Schubert Ensemble; Ipswich School.

❖ **Sun 31 Jan:** 4 pm **SVAM:** Camilla Scarlett violin, Jonathan Byers cello and David Owen Norris piano; East Bergholt Church.

4 pm **Music in Felixstowe:** The Ward Quartet; St Nicholas's Church, Felixstowe Ferry.



**Antara Duo**

### OPERA / MUSICAL

❖ **Thu 3 Dec:** 7.30 pm **English National Opera - live link:** *The Mikado* by Gilbert and Sullivan; Firstsite, Colchester.

❖ **Thu 10 Dec:** 7.15 pm **Royal Opera House - live link:** *Cavalleria Rusticana & Pagliacci*; Odeon, Colchester and on 14 Dec at Firstsite.

❖ **Sat 16 Jan:** 5.55 pm **Metropolitan Opera New York - live link:** Bizet's *The pearl fishers*; Firstsite.,

## CHRISTMAS EVENTS

### Pantomimes



❖ **To 30 Jan:** New Wolsley Theatre, Ipswich: *The Sword In The Stone*, a rock and roll panto.

❖ **To 10 Jan:** Mercury Theatre, Colchester: *Aladdin*.

❖ **Wed 2 Dec to 6 Jan:** 7.45 pm Eastern Angles Theatre Company: *Holy Mackerel!* An alternative panto; Sir John Mills Theatre, Ipswich and at The Seckford Theatre, Woodbridge from 12 to 23 Jan.

❖ **Wed 9 to 11 Dec:** 7.30 pm Essex University Theatre Arts Society *Jack & The Beanstalk*, Lakeside, Colchester. 7.30 pm

**Headgate Theatre**, Colchester: *Peter Pan* to 12 Dec.

❖ **Sat 19 to 30 Dec:** Regent Theatre, Ipswich: *Aladdin*.

❖ **Wed 23 Dec:** 7.30 pm Deben Players: *Jack & the Beanstalk*, Seckford Theatre, Woodbridge.

### CHRISTMAS SHOWS

❖ **Fri 4 to 13 Dec:** Aldeburgh Music: *Alice in Wonderland* - a Christmas spectacular; Snape.

❖ **Sun 13 Dec:** 3 pm Bolshoi Ballet - live link: *The Nutcracker*; Firstsite, Colchester.

❖ **Mon 14 Dec:** 7.30 pm Headgate, Colchester: *A Christmas Carol* by Charles Dickens, costumed performance by Robert MacCall.

❖ **Tue 15 Dec:** 7.30 pm Headgate: *The Nativity* - from the 15th century East Anglian mystery plays.

❖ **Wed 16 Dec:** 7.15 pm Royal Ballet - live link: *The Nutcracker*; Firstsite & Odeon, Colchester.

### CHRISTMAS CONCERTS

❖ **Sat 12 Dec:** 6 pm Lavenham Sinfonia: Baroque music with the Laurentian Choir; Lavenham Church 7.30 pm Pimlott Foundation; St Peter's Church, Colchester (open rehearsals: 8<sup>th</sup> and 10<sup>th</sup>).

7.30 pm Coggeshall Church: West Bergholt Concert Band.

7.30 pm Hadleigh Choral Society: Hadleigh Church. 7.30 pm Phoenix Singers: Handel's *Messiah (part 1)*; Framlingham Church.

❖ **Tue 15 Dec:** 7.30 pm Ipswich Choral Society: family concert and Christmas party; Ipswich School.



## NOTICEBOARD

### Ginny Croxford writes ST HELENA HOSPICE CHRISTMAS TREE-CYCLE 2016



St Helena Hospice is very pleased to be partnering with Colchester Borough Council and JustHelping for a second year to offer its Christmas Tree-Cycle.

On the **9th and 10th January 2016**, St Helena Hospice will be out with a team of volunteers collecting your Christmas Trees to be recycled. To take advantage of this service you need to register online and make a suggested donation of £5 or more. The more that you can give, the more you are helping to support patients and their families in your local area when they need it most.

The hospice is asking for people to think of those in their local community dealing with life-limiting illnesses at this time of year.

To see a full list of postcodes that will be covered and to book a collection slot, please visit the hospice website at [sthelenahospice.org.uk/treecollect16](http://sthelenahospice.org.uk/treecollect16)

St Helena Hospice are currently looking for the following volunteers: *Online Assistants*

We are currently looking for enthusiastic volunteers to join our online team at the Angora Donation Centre, selling, packaging, dispatching and filling in relevant paperwork. If you have specialist knowledge or interest in stamps, coins, jewellery, fashion, pic-

tures, Warhammer or Pokémon cards we would also like to hear from you.

### *Customer Service Assistants*

Do you have experience working in a customer focused role? Our team of customer service assistants at the Angora Donation Centre is looking for new members to join them. You will be required to greet members of the public bringing in donations, promote gift aid and process the necessary paperwork.

### *Retail Assistants*

Have you previously worked in retail or would you like some retail experience? The furniture shop at Angora Business Park, Stanway, is currently looking for motivated volunteers to work as part of the busy team. You will be assisting the shop manager to maximise income from the sale of donated goods, lifting and moving items of furniture for customers and around the shop. Good communication skills are essential.

### *Hairdresser*

Our Tendring Centre is looking for volunteer hairdressers to work once a fortnight on a Tuesday 10.30am to 12.30pm. It's important for people to feel positive about themselves and a haircut can be that real confidence boost they need to feel good! All the roles listed above have various hours and days available to fit around you apply via our website [sthelenahospice.org.uk](http://sthelenahospice.org.uk) or by emailing [volunteer@sthelenahospice.org.uk](mailto:volunteer@sthelenahospice.org.uk) or by ringing ☎931466 and speaking to our volunteer team.

*You are invited to*

# COFFEE & CAROLS



**Tuesday 15th December**  
**At The Duhy Barn, Royal Square Dedham CO7 6AD**

**10.30am -12pm**

**Music by PASTICHE**



## SURGERY NEWS

*Stephanie Durrant writes*

Ardleigh Surgery will be closed from Christmas Day and will reopen on **Tuesday 29th December.**

If you are on medication, make sure that you take your medication regularly and ensure that you have enough medication to see you through the Christmas and New Year period. Most importantly remember that although we may be shut, you are not on your own if you need advice. The NHS Choices website has lots of advice on how to treat various symptoms and if you dial 111 from your phone (which is a free call) you will be able to get advice from a clinician. The 111 service can also arrange for you to have an appointment with an out of hours doctor if they feel that is appropriate.

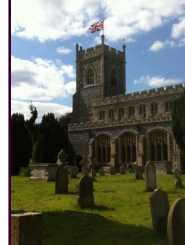
On behalf of everyone at the surgery, I would like to wish all our patients a merry Christmas and a happy New Year.

*Kathy Pollard writes*

## CONSTABLE COUNTRY PATIENT PARTICIPATION GROUP (PPG)

The new patient group has been meeting regularly since July. A list of members along with contact details is available at both surgeries and on the practice website: [www.constablecountrymedicalpractice.co.uk](http://www.constablecountrymedicalpractice.co.uk)

We also have comments boxes in both waiting rooms and our email address is [constablecountryppg@gmail.com](mailto:constablecountryppg@gmail.com) Just a reminder that the Constable Practice will be closed on **9th December** from 1pm for staff training.



## Let's raise the Roof

*(raising money for SSM church roof fund)*

Come and enjoy a "cuppa" and cakes in our beautiful church. Browse around local crafts and other stalls accompanied by a variety of musical interludes.

Stratford St Mary Church  
**Saturday 12<sup>th</sup> December**  
**10.00am – 3.00pm**

Whether you're an artist, a baker, a candlestick maker or indeed if you simply want to de-clutter, any items you wish to donate for the stalls are all greatly appreciated .

call Julie on ☎07989 639 583

## Steve White writes ALMSHOUSE VACANCY

There is a vacancy in one of the Mary Barfield's Almshouse's in Crown Street, Dedham. The Trust requires that a resident should be an unattached female, preferably over 50 years of age who has strong connections with the Parish of Dedham.

Apply in writing to the **Chairman for the Trustees, Mr S J White, Westvale, High Street, Dedham. CO7 6HL.** Closing date for applications is **December 15th 2015.**



## Liz Connelly writes 1ST ARDLEIGH CUB SCOUTS

1st Ardleigh Cub Scouts meet weekly and we have boys and girls attend from Gt Bromley, Ardleigh and Dedham. We

have had a busy year with out highlight being our summer camp at horrington. During the year we have worked on many different badges, which have lead to nine cubs achieving their Chief Scout Silver Award. This is the highest badge that a cub can earn. We have worked on various safety badges as well as navigator and pioneer badges. We mix some of the traditional skills of scouting with some newer aspects of the modern world! The main task is to have fun whilst learning some important life skills. 2016 is the Centenary year for Cub Scouts and we have lots of activities planned with a number of camps, our first one in February. We have a few spaces available currently so if you are 8 – 10 ½ year old and would like to join us, please contact Akela (Liz) at either [ardleighscoutgroup@outlook.com](mailto:ardleighscoutgroup@outlook.com) or