

## CLUBS & SOCIETIES

Audrey Mattack writes

### LADIES FELLOWSHIP

Our next meeting will be on Wednesday 26 November, at 3 p.m. in the Assembly Rooms. This will be our annual Christmas Party, so please come along and enjoy a time of fellowship.

Betty Callaghan writes

### GOOD NEIGHBOURS' CLUB

We recently enjoyed a pleasant outing to Monks Leigh which included afternoon tea. Our next outing was discussed and it was agreed to visit Tiptree - this time for lunch. Competition : A photo frame. New members welcome. Our next meeting will be on Friday 14 November.

Noreen Bell writes

### 14<sup>th</sup> ANNUAL DEDHAM QUIZ

This will be held on Saturday 31 January at 7.30 p.m. in the Assembly Rooms. Entries are invited from teams of up to six people. Tickets are £7.50 per person, including refreshments. Proceeds in aid of EACH (East Anglia's Children's Hospices) plus a donation to Dedham village Christmas meal for senior citizens. There will be a cash bar serving soft drinks, wine and beer. Offers of sponsorship and donations of raffle prizes are very welcome. Entries and enquiries to [tfirth@dedham.essex.sch.uk](mailto:tfirth@dedham.essex.sch.uk) or call Noreen Bell on ☎322 242.

Martin Broom writes

### DEDHAM FOOTPATH GROUP

On Sunday 2 November, meet at picnic site car park at Brantham at 10.30am for 5 mile walk. Leader Margaret Smith ☎ 822 797.

On Sunday 16 November, meet at the car park of Co-op Manningtree at 10.30 a.m. for an easy two-hour walk. Leader Sue Everett ☎ 07712 240 449

Graeme Forsyth writes

### STOUR VALLEY MEN'S PROBUS CLUB

On Wednesday 5 November the Rev'd. Andrew Ball will talk of his *Ministry on the Scilly Isles* and on 19 November Gary Egerton will tell us the story of *Jack The Ripper*. Please note, we now meet at the St John Ambulance HQ, Manningtree. We meet on the first and third Wednesday of each month in Manningtree at 10.30 a.m. New members are welcome. Please contact Secretary Brian Rolfe on ☎393 665.



Ian Rose writes

### U3A

The November talk will be entitled *Satire in Song*, held at the Constable Hall, East Bergholt on Wednesday 12, at 2.15 p.m. Joyce Kimber will talk about comic songwriters from Gilbert & Sullivan to Flanders & Swann.

This magazine can be read in colour at [www.dedham-parishchurch.org.uk](http://www.dedham-parishchurch.org.uk)

## DEDHAM PARISH CHURCH

[www.dedham-parishchurch.org.uk](http://www.dedham-parishchurch.org.uk)

e-mail: [office@dedham-parishchurch.org.uk](mailto:office@dedham-parishchurch.org.uk)

### MINISTERS (01206)

Gerard Moate *Vicar & Lecturer* ☎ 322 136  
The Vicarage, High Street, Dedham CO7 6DE  
Paul Southern *Assistant Minister*

### CHURCH OFFICERS

Richard Hopkins *Churchwarden* 322 361  
Quinlan Terry *Churchwarden* 322 370  
Be Burleigh *Deputy Churchwarden* 323 205  
Suzanne Woods *Deputy Churchwarden* 01255 870 640  
Gabriel Watson *Verger* 322 425  
Andrew Hodson *Caretaker & Groundsman* 07968 445 572

### MUSIC

Antony Watson *Director of Music* 322 425

### CHURCH GROUPS

Vacancy *Junior Church*

### FLOWER ARRANGERS

Sally Gotelee *Co-ordinator* 322 652  
Wendy Sarton *Weddings* 323 037

### DEDHAM PARISH MAGAZINE

Katie Courts *Editor* ↓  
Max Wilkinson *'What's On' Listings* ↓  
Martin Hole *Advertising* ↓

### PARISH OFFICE at the Vicarage 322 136

2.30 p.m. - 5 p.m. Monday - Thursday

*Office Administration* Be Burleigh  
*Financial Administration* Sara Marshall, Katrina Ablett

### DEDHAM C.E. PRIMARY SCHOOL [www.dedham.essex.sch.uk](http://www.dedham.essex.sch.uk)

Jason Skelton *Chairman* ↓  
Heather Tetchner *Headteacher* 322 242

### ASSEMBLY ROOMS [www.dedham-assemblyrooms.info](http://www.dedham-assemblyrooms.info)

Tracy Woods *Clerk to the Trustees* 323 921

### DUCHY BARN

Carol Mitson *Secretary* 323 116  
Anne Rowledge *Bookings* 322 394

Printed by IndigoRoss 01787 880 260

## DEDHAM PARISH MAGAZINE November 2014

### SUNDAY SERVICES

8.30 a.m.

Holy Communion *BCP*  
1st Sunday in month

10.30 a.m.

Family Service  
1st Sunday in month

Morning Worship *CW*  
2nd & 5th Sundays

Holy Communion *CW*  
3rd Sunday in month

Morning Prayer *BCP*  
4th Sundays

5 p.m.

Evening Prayer *BCP*  
2nd Sunday in month

5 p.m.

Re:Vive @5  
4th Sunday in month

### JUNIOR CHURCH

10.30 a.m.

Family Service  
1st Sunday in month

In groups on other Sundays

**DEADLINE FOR  
DEC/JAN EDITION:  
12 November 2014**



## TOWER FLAG DAYS THIS MONTH 9 & 11 November Remembrance & Armistice

### SPECIAL SERVICES THIS MONTH

Details of the regular services can be found on Page 1.

#### SUNDAY 2 NOVEMBER

3 p.m. Service of Thanksgiving  
for those whom we have loved

*Especially for those who have been bereaved*

#### SUNDAY 9 NOVEMBER

10.50 a.m. Remembrance Service

*(beginning in Royal Square)*



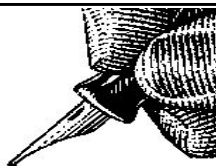
The Service of Remembrance will begin at the War Memorial at 10.50 a.m.

Wreaths will be laid. A turfed area will be available for wooden crosses to be placed by any member of the public. Crosses will be available from the Poppy Appeal Collectors who will visit each house during the fortnight before. There will also be a Poppy Appeal box in church.

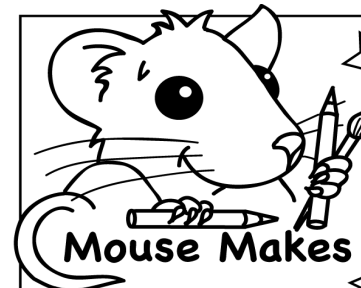
The offertory received in church during the service will be given to the **Armed Forces Christian Union**, an interdenominational, tri-service fellowship of Christians who wish to grow in their faith and share it with those with whom they serve.

*From the Registers*

**FUNERAL**

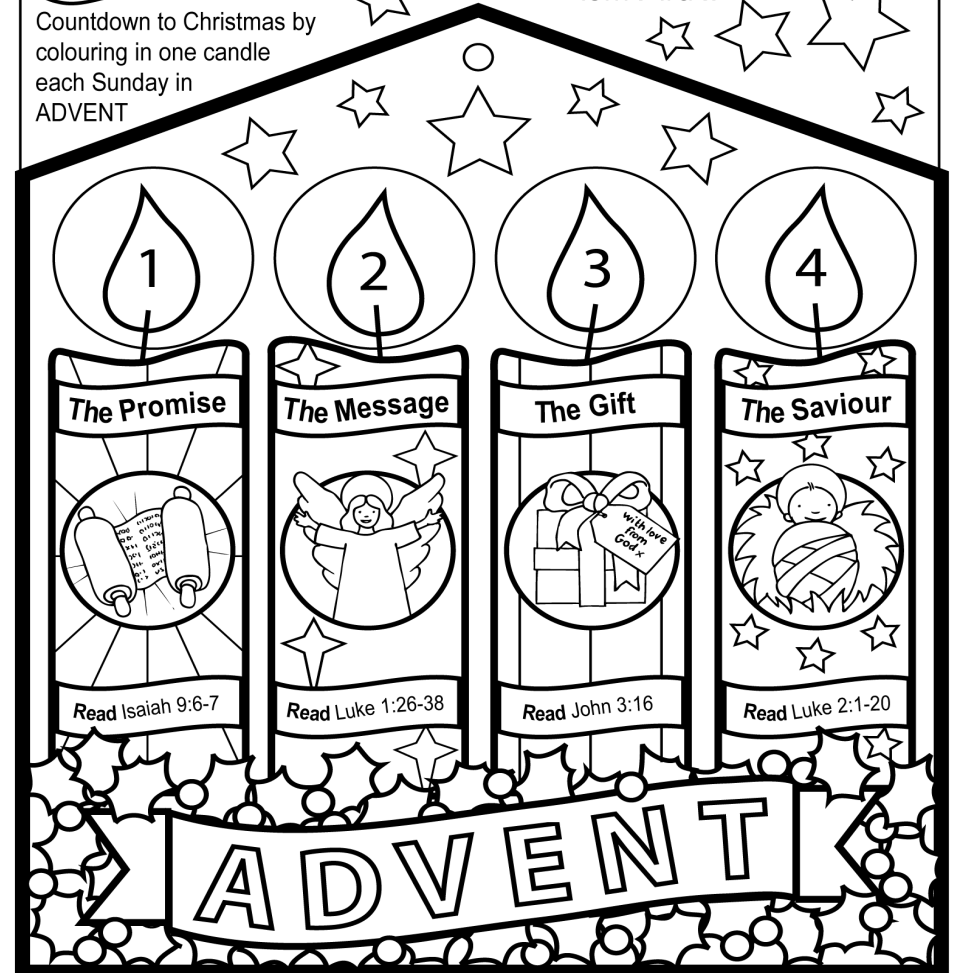


17 October 2014 John Richard Cole SHARMAN (89)



Jesus is coming! Christmas is near!  
ADVENT is the time before Christmas when we celebrate the arrival of JESUS, God's son, our Saviour. We remember God's promise to the world, God's message to Mary, God's love for us and God's promise come true.

Countdown to Christmas by colouring in one candle each Sunday in ADVENT



**HOST UK**

HOST is looking for friendly, hospitable people of all ages whose imaginations are caught by the idea of welcoming an international student at university here, far from his or her own family, to their home, for a day, a weekend or at Christmas. You don't need to live near a university, as students will travel for the privilege of meeting you, learning about real life in this country, and sharing their own culture. HOST is a voluntary activity, which makes ambassadors for international goodwill of us all. Please see [www.hostuk.org](http://www.hostuk.org) or call local organiser Kerry Bloom ☎01376 561889



**NOT QUITE MUNNINGS!**

An exhibition of works by the Stewards of Castle House at the Duchy Barn, on **Saturday 29 November, 10.30 am - 4 pm.** And the Castle House Trust shop is open for your Christmas shopping! Refreshments available, entry is free.



**CHANNEL 4'S HIT SHOW COME DINE WITH ME**

...is coming to Colchester, and is looking for couples to take part! Do you and your other half host the best dinner parties in town? Come Dine With Me are looking for the perfect partnership to create the recipe for success! If you're over 18 & have the combined skills to produce an amazing dinner party...we want to hear from you! Three couples. Three nights. Three dinner parties. And a £1,000 cash prize. If you or any couples you know would like to take part get in touch: [paskell.meal@shiver.tv](mailto:paskell.meal@shiver.tv) or call ☎0207 157 3078.



**PRESSING ON**

In January of next year I will have been in Dedham for twenty years. It will also be my last month with you as the Vicar and Lecturer of Dedham. It has been 170 years since a Vicar of Dedham has resigned, other than for their retirement, so this community can be forgiven for being rather out of practice in dealing with such an announcement.

News of my departure will not be a surprise, however, to those who have been working closely with me over the past year or so since the death of Margarita, my beloved wife, who was to many of you a dear friend and to even more a kind nurse. And yet my decision to leave at this time is not only for personal reasons. After prayer and waiting upon God, I realise that I have been here long enough and that the people of Dedham need a fresh approach to Christian ministry.

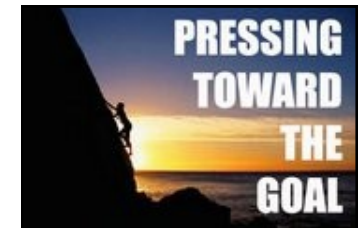
I am therefore grateful that I have received an invitation to be the Chaplain of Bloxham School, in Oxfordshire, and this I have recently accepted. I will endeavour to use my remaining time in ministry so as to be a source of God's blessing to young people.

There are a few months more for us to work together before I leave. I pray that each one of you will support and encourage the Churchwardens and Parochial Church Council, and the trustees of the Dedham Ecclesiastical Lectureship Trust (who as patrons will have a part in choosing my successor), in what will certainly be a challenging time ahead for them - so that together you may seek the Lord's will for who will be called to serve Him in this fine parish.

When the time comes, I will leave with very great gratitude to God for the years that I and my family have had among you. Then, as St. Paul put it in his letter to the Philippians (3:14),

*"I'll press on to reach the end of the race and to receive the heavenly prize for which God, through Christ Jesus, is calling us."*

**Gerard Moate**  
Vicar & Lecturer



**CHRISTMAS & NEW YEAR EDITION**

The next magazine is a combined December and January edition. Please ensure that your copy for both months is with the Editor by **Wednesday 12 November.**

Cllr. Jane Hughes writes

### DEDHAM'S CHILDREN'S PLAY AREA

At the July meeting of the Parish Council, in answer to concerns raised by councillors, it was agreed that the Play Area needed investigation and, if necessary, recommendations should be made for future improvements. The area was created in the southwest corner of the Sports Field some years ago and was intended for use by younger children. Little has been added or changed since. As a result the site appears well worn and in urgent need of work.

Whilst all the equipment is currently safe to use - it is inspected weekly by Cllr. Chris Clarke and annually by R.O.S.P.A. - existing facilities are neither as modern nor as enticing as those offered in other neighbouring villages. Councillors thought that local and visiting children deserve more. *Action Taken:* First, a survey of parents using the Play Area with their children confirmed these findings and indicated that the area definitely needed updating with more modern and innovative equipment, which should definitely include something for disabled children. Secondly, the Council sought advice from various firms that provide such equipment and noted the large variety of items available. Finally any potential improvements and the acquisition of new pieces will inevitably involve considerable costs. Given the current financial restrictions presently facing all local councils, Dedham Parish Council

will need to seek external funding to make changes. This will inevitably involve tapping various sources for grants and approaching CBC for any help they are prepared to offer.

Clearly the proposed plan for improving the Play Area will take much time and effort to achieve. However all councillors feel it is a very worthwhile project and we have begun the process of development with enthusiasm. We will keep residents informed of our future progress.

### THE LARGE ROUNDABOUT

This roundabout, previously situated in the NE corner of the Duchy Field, was originally donated to the village by the residents of Dedham, Mass. U.S.A. in the 1960s. For some time the roundabout has been deteriorating and now appears shabby and in need of renovation. The rubber matting at its base has become badly worn and although it has passed the ROSPA inspection for safety, we believe action should be taken to restore it. At the same time we think that it needs moving from its present, rather isolated position to a new location nearer the other play area. In order to accomplish this we are seeking to use some of our '106 funds' from the Borough.

### Next Meeting

The next meeting of Dedham Parish Council will be at 7.30 pm. on Monday 3 November, in the Duchy Barn.

### MUSIC continued

❖ **Fri 21 Nov:** 7.30 pm **Studio**

**Music:** Bozza Ensemble, Brightlingsea.

❖ **Sat 22 Nov: Witham Choral**

**Society:** *Requiem* by Maurice Duruflé; Coggeshall Church. 7 pm

**Colchester Chamber Choir:**

*Blow The Trumpet*; Bury St Edmunds Cathedral. 7.30

pm **Bury Bach Choir:**

Mozart's *C minor mass*; The Apex, Bury St Edmunds. 7.30

pm **St Mary-le-**

**Tower Church:** Tower

Chamber Choir, 19th and

20th century romantic music; Ipswich.

❖ **Sat 29 Nov:** 7 pm **London**

**Oriana Choir:** *World*

*War I Centenary Commission*

by Toby Young; Mendels-

sohn, Kodaly, Lukasewski, Vaughan-

Williams and Holst; Royal Hospital

School, Holbrook. 7 pm **Nayland**

**Choir:** Brilliant Baroque; Nayland

Church. 7.30 pm **Aldeburgh Music**

**Club:** Handel's *Alexander's Feast*;

Snape Maltings. 7.30 pm **Colchester**

**Symphony Orchestra:** Mozart,

Beethoven and Hummel's *Trumpet*

*Concerto*; St Botolph's, 7.30 pm **Eye**

**Bach Choir:** Rossini's *Petite Messe*

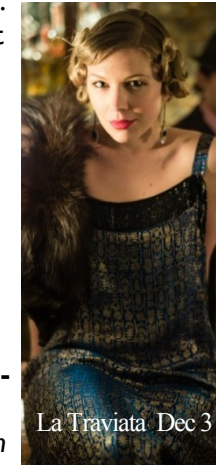
*Solennelle* with Piano and Chamber

Organ; Eye Church. 7.30 pm **Wood-**

**bridge Choral Society:** Handel's

*Messiah*; St Mary's church, Wood-

bridge.



❖ **Sat 6 Dec: Ipswich Bach**

**Choir:** Christmas music (Bach and others); St John's, Ipswich. 7 pm

**Stour Choral Society:** Christmas Celebration; St Mary's, Frinton. 7.30

pm **Braintree Choral Society:**

Music for Christmas; Coggeshall

Church. 7.30 pm **St**

**Botolph's Music Society:** choral and orchestral music,

Colchester.

❖ **Sun 7 Dec:** 4.00 pm **Col-**

**chester Choral Society:**

Christmas music; Moot Hall,

Colchester. 6.30 pm **King-**

**fisher Sinfonietta:** Hum-

perdinck to Bach; New Cut

Arts Centre, Halesworth.

❖ **Thu 11 Dec:** Band of the

Parachute Regiment; St

Botolph's, Colchester.

❖ **Fri 12 Dec:** 7.30 pm

**Studio Music:** New Gabrieli Quar-

tet, Brightlingsea.

### OPERA and MUSICAL

❖ **Wed 19 Nov:** 7.30 pm **Head-**

**gate, Colchester:** *Promises, Promises*

by Burt Bacharach, Neil Simon & Hal

David - Platform Musicals to 22 Nov

❖ **Thu 20 Nov:** 7.30 pm

**OperaUpClose;** a new English ver-

sion of Verdi's *La Traviata*; Mercury

Theatre, Colchester.

❖ **Wed 3 Dec:** 7.30 pm **Chisinau**

**National Opera:** Puccini's *Madam*

*Butterfly*; The Regent, Ipswich.

Check details @ [www.eamaa.org](http://www.eamaa.org)



in the Assembly Rooms, Dedham

**Wednesday 19 November**  
**"The Hundred Year Old Man Who Climbed Out of the Window and Disappeared"** (15)  
 2014 Directed by Felix Herngren



Allan Karlsson climbs out of his bedroom window and makes his getaway on his one-hundredth birthday. So begins his picaresque journey involving criminals, several murders, a suitcase full of cash, and incompetent police. His escapades unfold and we learn something of his life in which, remarkably, he helped to make the atom bomb, became friends with American presidents, Russian tyrants, and Chinese leaders, and was a participant behind the scenes in many key events of the 20th century.

**There will be no film in December**

**Admission 7 pm**  
**Film begins 7.30 pm**  
**Tickets £4 available from**  
**HOOD'S NEWSAGENT**

Refreshments available before the film or screening and during the film interval

**Contacts:** Jax Horswill **322 328** or **dedhamfilms@gmail.com**  
 To find out more about the films, live screenings or Dedham Films visit  
**www.dedhamfilms.co.uk**

**Wednesday 26 November**  
**L'ELISIR D'AMORE**  
 By Donizetti (Live from ROH)



Starring Vittorio Grigolo,  
 Lucy Crowe and Bryn Terfel  
 Laurent Pelly's acclaimed production of Donizetti's opera radiates tenderness, humour and southern sunshine.

**Tuesday 16 December**  
**Alice in Wonderland**  
**Live from ROH Covent Garden**



**Admission 6.30 pm**  
**Screening begins 7.15 pm**  
**Tickets £12.50 available from**  
**SHAKESPEARE HOUSE GALLERY**



**1<sup>st</sup> Dedham Guides**



*Invite you to our Christmas Bazaar with Body Shop Party on*

**Thursday 20 November**  
**7 – 9 pm at the Assembly Rooms, Dedham**

Please bring friends and join us, there will be stalls selling Christmas Cards/paper, Boxes, Jewellery, Homemade Pickles & Chutneys, and gifts together with a raffle with Body Shop items - all good Christmas present opportunities! Refreshments will be available. Orders arrive the next week, and if you can't come along on the evening you can place your order before, I will have the catalogues.

Please come along or contact **Tracey Lovelock 323 521**  
**tracey.lovelock@btinternet.com** with an order! Thank you.



**COME & ENJOY THE**



**BIG BREAKFAST**  
**SATURDAY 8 NOVEMBER 2013**

**Assembly Rooms, Dedham**  
**8.30 a.m. until 11.30 a.m.**

Tickets £8 on the door (donation for the under 10s)  
*Raffle Newspapers*

ALL PROCEEDS TO DEDHAM PARISH CHURCH

## NEWSROUND

Pete Keeble writes

### CONSTABLE COUNTRY MEDICAL

We have just held our first 'flu clinic at East Bergholt and vaccinated about 1,300 patients, and about 400 of these also had shingles and/or pneumococcal vaccinations. Eligible patients who were unable to attend one of our clinics are asked to contact the practice to book an appointment at one of our flu clinics which will be scheduled weekly.

Our selected charity this year was St Elizabeth Hospice. The practice staff ran in the *Muddy Race for Life* and collected £600+ for *Cancer Research*.

### GP Partner Changes

Doctor Olowu joined the practice as a partner in September. Dr D'Souza has decided to leave the practice and he will be missed by patients and staff alike. He will be leaving at the end of February and we are currently looking to recruit a partner to replace him.

### Patient Representative Group

At a recent meeting of the Practice PRG members reviewed how best to represent patients. To assist the review it was decided to conduct a patient consultation exercise. Further details on this will be published later.

### Staff Training Dates

The practice will be closed from 1pm on 13 November and 10 December for staff training.



Laura Valentine writes

### DEDHAM PRIMARY SCHOOL

All the children in Classes Five and Six travelled to Kingswood Activity Centre in Overstrand, near Cromer, for three days of outdoor learning activities. These included archery, caving, fencing and climbing and various team challenges. The activity mentioned the most on arrival back at school was definitely the 'Leap of Faith'. Having mustered their courage to climb to the top of a ten-metre pole, the children jumped out to catch a mid-air trapeze! Lots of team camaraderie and self-confidence was required and those who achieved the challenge were certainly buzzing with the achievement.

The School's French Day saw all children take part in food tasting, *Tour de France*, fashion, art (pointillism), story-telling and mapping. During the afternoon, children rose to the challenge of recreating the Eiffel Tower after a story-telling session with local author Genevieve Yusef. We hope to write some of our own bilingual books later on in the year. There is still lots to look forward to...

## WHAT'S ON: FILM, THEATRE & MUSIC

### FILM

❖ **Wed 12 Nov:** 7.30 pm **Dedham Films:** *Grease*, Sing-a-long for Cancer Research UK; Assembly Rooms.

❖ **Wed 19 Nov:** 7.30 pm **Dedham Films:** *The Hundred Year Old Man Who Climbed Out of the Window and Disappeared*; Assembly Rooms.

❖ **Fri 21 Nov:** 7.30 **Polstead Films:** *Chef*; Polstead Village Hall.

### THEATRE

❖ **Fri 31 Oct** to 1 Nov: 7.45 pm **Lakeside, Colchester:** *Everyman*.

❖ **Wed 5 Nov:** **New Wolvey Theatre, Ipswich:** Adaptation of Ernest Hemingway's *A Farewell To Arms* - to 6 Nov. 7.45 pm **Headgate:** *Waiting for Godot* by Samuel Beckett to 8 Nov.

❖ **Sun 9 Nov:** 2 pm **Lakeside:** *Hansel & Gretel* - for children.

❖ **Wed 12 Nov:** 7.30 pm **UK Touring Theatre:** *A Doll's House* by



Henrik Ibsen, Lakeside, Colchester.

❖ **Mon 17 Nov:** 7.30 pm **Regent Theatre, Ipswich:** *The Mousetrap* by Agatha Christie to 22 Nov.

❖ **Wed 26 Nov:** 7.45 pm **Headgate:** *Look Back in Anger* to 29 Nov.

❖ **Thu 4 Dec:** 7.30 pm **Lakeside, Colchester:** *Phantasmagoria* by Jesus Paolini Park.

### MUSIC

❖ **Sun 2 Nov:** **Haverhill Choral Society:** *The Armed Man*, requiem by Karl Jenkins; Haverhill Arts Centre. 3 pm **Kingfisher Ensemble:** Strauss, Mozart, Brahms; Waldringfield Village Hall.

❖ **Sat 8 Nov:** 7.30 pm **Ipswich Chamber Music Society:** Henschel String Quartet - Mozart, Britten, Dvorak; Ipswich School. 7.30 pm **Lexden Choral Society:** Mozart's *Requiem*; St Botolph's, Colchester. 7.30 pm **Sudbury Choral Society:** English Pastoral music; St Peter's Church, Sudbury.

❖ **Sun 9 Nov:** 2.45 pm **Kingfisher:** String Sextets: Borodin, Rimsky-Korsakov, Brahms; Lion Walk Church, Colchester. 4 pm **Stour Valley Arts and Music:** Henschel Quartet - Mozart, Beethoven, Dvorak; East Bergholt Church. 6 pm **Royal Hospital School:** Candlelit Vespers. 6 pm **Suffolk Villages Festival:** Gainsborough's Musical Friends; St Peter's Church, Sudbury. 7pm **Aurora Voices:** songs from musicals, Headgate Theatre Colchester.

❖ **Sat 15 Nov:** 7 pm **Colchester Choral Society:** Handel's *Messiah*; St Botolph's, Colchester. 7.30 pm **Kingfisher Sinfonietta:** Mozart and Bach (fathers and sons); St Mary's Woodbridge.

## PAST TIMES

### November 1914 - DEDHAM MEN SERVING IN THE WAR

Eng. Lieut.-Cmdr. **Sharpe**      *HMS Laverock*  
 Albert **Woodcraft**      *HMS Hannibal*  
 William Charles **Alexander**      *HMS Indomitable*

*5<sup>th</sup> Essex Territorials*  
 Capt. Douglas **Smith**      Herbert James **Hitchcock** †      Edward **Ogg** †

*Royal Garrison Artillery*  
 Sydney **Collingwood**      Frank George **Crane**

*Royal Army Medical Corps*      John William **Bennett**  
*Northamptonshire Regiment*      Joseph **Cheesman**  
*4<sup>th</sup> S. Lincs. Territorials*      Carlton **Collingwood** †  
*Royal Engineers*      Capt. **Kitto**  
*Middlesex Territorials*      Robert **Moore**  
*Army Services Corps*      Frederick J. **Osborne**  
*Royal Horse Artillery*      R. Hill **Watson**  
*Army Veterinary Corps*      Thomas A. **Wood**

*Royal Field Artillery*  
 Percy **Hubbard**      Walter **Locke**  
 Alfred William **Partridge**      James **Reason**  
 W. **Tanner**      Samuel **Goldsmith**

*2<sup>nd</sup> Essex Regiment*  
 Harry **Bund**      George **Hazel**  
 Herbert **Lawrence**      Percy John **Page**

*3<sup>rd</sup> Essex Regiment*  
 Charles **Ablewhite** †      Frederick **Arthy**  
 John **Keeble**      George **Locke**  
 A. **Mattock**      Clifford **Whittle**

*Essex Yeomanry*  
 Harold **Felgate**      Edwin **Ray**

*20<sup>th</sup> Hussars*  
 Frederick **Cook**      Percy **Cook**      Frederick **Denney**  
 Frederick **Johnson**      Edward **Osborne**      Frank **Payne**      Arthur **Garwood**

[no regiment indicated]  
 A. **Barber**      G. **Fisher**      J.O. **Kent**      G. **Playel**  
 C. **Scower**      John **Smith** †      W. **Watson** †

† name on the Dedham War Memorial

## NOTICEBOARD



# Dedham Christmas Market

FORMERLY THE DICKENSIAN MARKET

ON THE HIGH STREET  
SATURDAY 6 DECEMBER



Shops open & Much More!

Spaces can be booked through

Kim Spencer 01206 322 773

All Proceeds to Dedham (C of E) Primary School

## NOTICEBOARD



### DEDHAM PARISH CHURCH CHRISTMAS TREE FESTIVAL

with performances from  
DEDHAM SONGBIRDS

**6-7 DECEMBER 2014**

Entries are invited from individuals, clubs, businesses and children  
Prizes will be awarded for the best decorated tree in each category :  
Individuals or families / Groups or businesses / Children up to the age of 12

Entry fee **£2.50** each tree    Deadline for entry forms: **14 November 2014**

*Completed trees to be delivered to church on*

**Friday 5 December between: 3 - 5 p.m.**

*Trees to be collected by participants on*

**Sunday 7 December between: 4.30 - 5.30 p.m.**

*Tree specifications*

- No taller than 5ft
- LED battery-operated lights only (to be provided by participants)
- Trees can be on any theme or subject
- Trees must not be made of toxic substances or be offensive
- Entries can be from individuals, groups or classes

*Further details available from **Briony Lawton** ☎ **321 224***



#### DEDHAM CHRISTMAS TREE FESTIVAL ENTRY FORM

*please complete and return - with a £2.50 entry fee - to the Parish Office*

**Category** *(please indicate)*

1. Individual or family / 2. Groups or businesses / 3. Child (up to the age of 12)

**Title of Tree Entry** *(for the printed catalogue)*

**Approx. Height:**            **LED Battery lighting?** YES / NO *(please indicate)*

**Name & Address** *(please PRINT)*

**Telephone / Mobile / Email** *(please provide all if available)*

## PAST TIMES

### Ten Years Ago **November 2004**

- ◆ FAREWELL TO RAY GIBBS *who has finished his term as this parish's first Youth and Families Worker. Church, school and the wider community were represented by the many people who had gathered to express their gratitude for his ministry here.'*
- ◆ NEW SCHOOL BUILDINGS *'A day earlier than scheduled the building contractors 'handed over' the new classroom to the Headmistress, together with the re-fitted areas of existing classes — including a new heating system for the whole school. Class 5 happily moved from their temporary home in the school hall to their superb 'room with a view'. Class 3 has been enlarged, and the library and ICT suite have both been re-modelled.'*

### Fifty Years Ago **November 1964**

- ◆ LADY MUNNINGS *has kindly consented to open the Christmas Bazaar*
- ◆ POSTMASTER RETIRES *Mr. Francis, who spent his whole working life at the Post Office, has retired. Many parishioners have already subscribed to a farewell gift...*
- ◆ OPPOSITION TO THE CHURCH *'the mockery of religion in schools, the disabilities which inevitably accompany overt allegiance to the Church on the one hand, and the effect of growing industrialisation and urban life, the general materialistic outlook of Europe... are all bound to take their toll.'* [ The author was writing about Serbia within Yugoslavia, rather than a future Britain ]

### A Century Ago **November 1914**

- ◆ PROHIBITED AREA *'We are sorry to hear that the scheme, so warmly taken up, for offering hospitality to Belgian refugees has had to be abandoned, as Dedham is in the the prohibited area. The idea originated with Dr. and Miss Ashwin, who thought that it might be possible to utilise Great House for the purpose...'*
- ◆ SHIRTS FOR THE TROOPS *'Mrs. Harwood appealed for shirts for some of the men in one of the Essex regiments... some of the men had not been able to change their shirts for eight weeks, as they only possessed the one which they wear night and day.'*