

CLUBS & SOCIETIES

Daphne Langton writes

LADIES' FELLOWSHIP

Members and friends enjoyed a tea party at Cluffs, in perfect weather. In August there will be an outing to Corn Craft near Hadleigh. Our next meeting will be on Wednesday 28 August, at 2.30 pm, in the Assembly Rooms, for which a speaker has been arranged.

Paw Slingo writes

HORTICULTURAL SOCIETY



Autumn Show: *Flowers and Vegetables* will be held in the Assembly Rooms on Saturday 21 August. All exhibits are to be staged between 9-11 a.m. Doors will open 2 p.m. Admission will be £1, members and children free. Hopefully, the drought won't have beaten us and there will be a record number of entries. Schedules may be obtained from ☎ 322 147 or ☎ 231 164.

The Autumn season begins on Wednesday 6 October, with 'Gardeners' Progress' by Alex Scott.

Ian Rose writes

STOUR VALLEY U3A

Our annual Summer Party will be on Friday 13 August. A new programme of lectures begins this autumn, 2.15pm, Wednesday 8 September, with *The River Deben Estuary - My Life on the River* by Harbourmaster John White. Lectures are held in the Constable Hall, Gandish Road, East Bergholt.

Betty Callaghan writes

GOOD NEIGHBOURS' CLUB

At our July meeting we decided to play cards. Due to the hot weather, someone suggested we might play 'strip poker' but sensibility reigned and we settled for bingo instead! An outing to Felixstowe has been arranged for Thursday 19 August.

Ruth Higginson writes

WEA

The autumn series of lectures is entitled 'Britain and the Sea', given by Roger Beckett, starting on Wednesday 6 October, from 10 am until 12 noon. The course comprises of ten 1½ hour lectures, weekly, and costs £44 a term. Lectures take place in 'Munnings Museum', Castle Hill, Dedham. For more information on this course or the WEA; Joanne Rowles ☎ 323 698.

GOSPEL TRUTH?

A minister announced, 'Next Sunday I will be preaching on the subject of "not telling lies." In preparation, I would like you to read St. Mark, chapter 17.'

The following Sunday he asked the congregation: 'How many of you remembered to read the Bible chapter I mentioned, in preparation?' Many hands went up. 'You are the very ones I need to speak to,' he said, 'because St. Mark's gospel has only sixteen chapters.'

DEDHAM PARISH CHURCH

www.dedham-parishchurch.org.uk

e-mail: office@dedham-parishchurch.org.uk

MINISTERS (01206)

Gerard Moate	Vicar & Lecturer	☎
The Vicarage, High Street, Dedham CO7 6DE		322 136
Stuart Wilson	Reader Emeritus	392 572
Chris Slocombe	Hospital Visitor	321 023

CHURCH OFFICERS

Stuart Wilson	Churchwarden	392 572
Sarah Oakley	Churchwarden	322 034
Antony Watson	Deputy Churchwarden	853 139
Katie Sambrook	PCC Secretary	323 813
Mike Fisher	Financial Administrator	01394 388 237
George Beeken	Vergers	865 264

MUSIC

Antony Watson	Director of Music	853 139
---------------	-------------------	---------

CHURCH GROUPS

Richard & Elizabeth Hopkins	Junior Church	322 361
Vivien Chapman	Dedham Ladies' Fellowship	308 549

FLOWER ARRANGERS

Sally Gotelee	Co-ordinator	322 652
Barbara Ward	Weddings	337 242

DEDHAM PARISH MAGAZINE

Parish Office	Editorial & Advertising	322 136
---------------	-------------------------	---------

PARISH OFFICE at the Vicarage 322 136

2.30 p.m. - 5.00 p.m. Monday - Thursday

Parish Secretary Betty Cox

Office Admin Support Joan Edwards, Gill Seymour-Pugh

DEDHAM C.E. PRIMARY SCHOOL www.dedham.essex.sch.uk

Christopher Bailey	Chairman	230 404
Heather Tetchner	Headteacher	322 242

ASSEMBLY ROOMS www.dedham-assemblyrooms.info

Tracy Woods	Clerk to the Trustees	323 921
Andrew Hodson	Caretaker	07968 445 572

DUCHY BARN

Carol Mitson	Secretary	323 116
Gay Burfield	Bookings	322 261

Printed by Contact Reprographics 734 435

DEDHAM PARISH MAGAZINE

Summer 2010

SUNDAY SERVICES

8.30 a.m.

Holy Communion BCP
Every Sunday (not August)

10.30 a.m.

Family Service
1st Sunday in month

Morning Worship CW
2nd & 5th Sundays

Holy Communion CW
3rd Sunday in month

Morning Prayer BCP
4th Sundays

6.30 p.m.

Evening Prayer BCP

JUNIOR CHURCH

10.15 a.m.

Family Service in Church
1st Sunday in month

In the Assembly Rooms
or Duchy Barn
on all other Sundays
during school terms

**DEADLINE FOR
OCTOBER EDITION :
15 September**



TOWER TOURS

Every Saturday morning and afternoon,
Sunday afternoons, and some weekdays
(parties by arrangement)

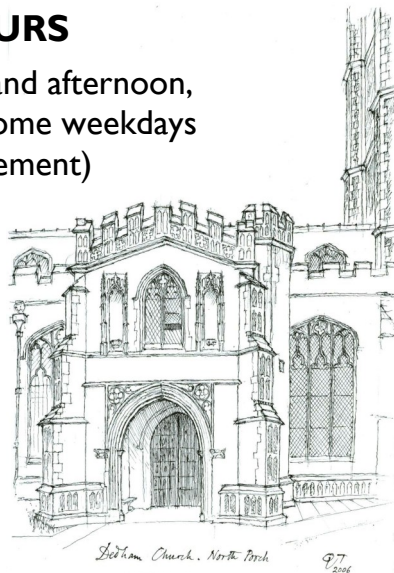
MUNIMENT ROOM TOURS

If you would like to see something of the
local history archives and ancient library
in this church, then come to the church on

Saturday 14 or 28 August

Tours will begin at **10 a.m. promptly**
(sorry, but latecomers will be left behind!)

☎ (01206) 322 136



TOWER FLAG DAYS THIS MONTH

Sunday 15 August *St Mary the Virgin*



From the Registers

BAPTISMS

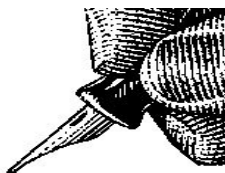
- 4 July 2010 Matilda Mary Ann PEAKE
Harry James MERCER
- 11 July 2010 George Felix ARCHER

WEDDINGS

- 3 July 2010 Fergus Brian Keatley ADAMS
& Katharine Anne SHELDON
- 17 July 2010 Wayne Graham BALL
& Lorraine Anne MARVEN

FUNERAL (at Colchester Crematorium)

- 14 July 2010 Eva Maria HARTMANN (85)



William Whiting

***Eternal Father, strong to save,
whose arm doth bind the restless wave,
who bidd'st the mighty ocean deep
its own appointed limits keep:
O hear us when we cry to Thee
for those in peril on the sea.***

Hymns Old & New No. 114

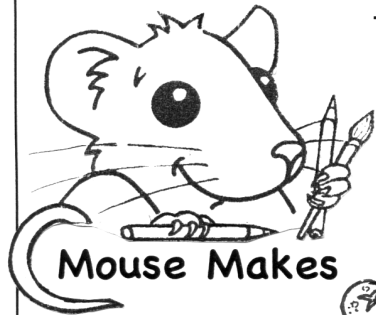
Known throughout the world as the "Sailors' Hymn", this stirring plea for God's mercy is regularly sung on board ships, and for and by mariners everywhere.

William Whiting (1825-78) was born in Kensington, London, the son of a grocer. Educated at the Clapham and Winchester teachers' colleges, he served as the Master of the Quiristers of Winchester College for 36 years, from 1842 to 1878. Whiting published volumes of poetry, but this is his most famous poem. The story goes that Whiting wrote this for one of the 'quiristers' who was about to sail to America. He submitted it in 1860 for inclusion in *Hymns Ancient and Modern*, with this first verse:

*O Thou Who bidd'st the ocean deep,
Its own appointed limits keep,
Thou, Who didst bind the restless wave,
Eternal father, strong to save.*

Some of the imagery seems to have been taken from Milton's *Paradise Lost*. It was the editors of the hymn-book who altered the words of the first verse to those with which we are familiar. Whiting himself re-wrote the entire hymn in 1869 and it is this amended version which appears in most hymn-books today.

The tune which is most associated with this hymn is MELITA which was written by John B. Dykes (1823-76), precentor of Durham Cathedral. The name 'Melita' is taken from the Bible story of St Paul's journey from Caesarea to Rome. Acts 28:1 records that, after a shipwreck, Paul and his fellow prisoners were able to swim to the island of Melita, the name by which Malta was then known.



Mouse Makes

Read the full story of the feeding of the 5000 in John 6:1-15.

Find these words on the picnic rug:

- BARLEY • MIRACLE • CROWD • TEACH •
- GRASS • GATHER • BASKETS • SHARE •
- BREAD • LOAVES • FEAST • SIT • TWO •
- DISCIPLES
- ATE • SAT
- HUNGRY
- BOY • EAT
- FIVE
- FISH
- JESUS
- PIECES
- GOD
- FULL
- FEED
- TWELVE
- THANKED

The Large Crowd and The Big Picnic

Thousands of people had followed Jesus to the other side of the lake to listen to his teaching.

All that the disciples had to feed them was **five** loaves of barley bread and **two** fish but Jesus took the bread and fish and gave thanks to God. They all had as much as they could eat and there were still **12** baskets of bread left over!



Aug10

K	E	A	T	H	A	N	K	E	D	B	S
B	A	R	L	E	Y	D	O	W	I	E	B
R	T	H	U	N	G	R	Y	F	S	C	A
F	E	P	F	B	R	P	I	E	C	E	S
U	G	M	I	R	A	C	L	E	I	G	K
L	O	A	V	E	S	E	T	D	P	H	E
L	D	F	E	A	S	T	W	O	L	S	T
C	R	O	W	D	F	E	E	B	E	H	S
E	J	E	S	U	S	A	L	O	S	A	T
F	I	S	H	A	I	C	V	Y	O	R	G
Y	I	G	A	T	H	E	R	E	E	Y	



PLANNING FOR GROWTH

It's not just the Government that has to decide how to 'cut the cloth to fit the suit'. Your parish church also has to do the same. In this article I will be telling you about a 'cut' affecting Dedham, but also about some 'extra cloth' being made available.

It was some 150 years ago that the service of Evening Prayer (Evensong), was re-introduced to this parish. It was not greeted with enthusiasm by all church members; many appear to have seen it as an unwelcome additional obligation upon their 'day of rest'! Over the years it has been well attended. For a long while we have been the only church in the deanery with a Sunday evening service every week. In recent years, however, attendance has slowly dwindled such that the church choir, which has been so faithful, has often out-numbered the congregation.

CHANGE TO EVENING SERVICES

The PCC has decided that, following a change in service pattern in August (when there will be only one service each Sunday, at 10.30 a.m.) the regular pattern of evening services will change from this autumn. From September, Evening Prayer will be only on the first Sunday of every month. We will then be like churches in, say, Long Melford or Coggeshall, but unlike Lavenham or Ardleigh (no regular evening services).

In addition, there may be special evening services at festivals. Other weeks there will be different kinds of fellowship, not all of them in the church building, or on a Sunday. So, for example:

SUNDAY@ SIX

A fellowship for younger teenagers, which meets every Sunday during term time either at The Vicarage, or at The Croft, the home of Richard and Liz Hopkins, ☎ 322 361.

PRAYER & A PINT

A men's fellowship, in which a time of prayer will be accompanied by a glass of good beer, lager, or fruit juice, (according to taste). The first of these will be 6pm, Sunday 12 September, at the Vicarage. Hopefully, this will take place regularly, on the 2nd Sunday of each month ☎ 322 136.

GROWING LEADERS

A new study group for encouraging and training lay leadership within the local church. This will also begin in September, dates and venues to be confirmed.

Let us pray that there will be a growth in Christian fellowship in Dedham, with an increased desire to worship God together; and let us explore fresh ways of doing so.

Gerard Moate
Vicar & Lecturer

[This item was missed from the July edition in error, for which the Editor apologises.]

John Osborn writes
DEDHAM SURGERY

The third Annual General Meeting of the Dedham Vale Community Health Association (DVCHA) will be held in the Duchy Barn Community Centre on Thursday 29 July commencing at 7 pm. The meeting, which should conclude at about 8.30 pm, will provide a forum for discussion of the first year of surgery use in the Roman Place, Manningtree Road, Health Centre. Directors will be available to give a report on the year that ended 31 March 2010.

It was in July 2009 that the Ardleigh Medical Practice commenced GP services from the purpose-built premises on all weekdays except Mondays. The consolidation of that very welcome restoration of GP services in Dedham after a gap of almost five years will be discussed. Further improvements are always being sought and feedback from patients and other local people will be welcomed.



Heather Tetchner writes
CHESS CLUB

Is there anyone able and willing to lead a Chess Club in Dedham Primary School on a Tuesday or Thursday lunchtime, 12.30 -12.55pm? We have a member of staff willing to be in attendance, so a CRB check is not an immediate issue, although one will have to be completed eventually ☎ 322 242.



Susanne Grimwade writes
SMARTY'S PRE-SCHOOL

It has been a busy few weeks for the Smarty's children who have taken part in a sponsored 'pedal push' along the Drift and have been on a coach trip to the Tropical Wings Zoo in South Woodham Ferrers, near Chelmsford.



Our older children, who will shortly be leaving us to begin primary school, have finished their school induction days. Smarty's staff also accompanied the children to the primary school who then had lunch in the new hall before being invited to watch a drama performance. We wish all the children who will be leaving the pre-school all the very best and thank their parents / carers for all their support over the years.



DEDHAM FILMS

in the Assembly Rooms, Dedham

15 SEPTEMBER The Last Station
20 OCTOBER Amadeus
17 NOVEMBER DOUBLE BILL: The Bicycle Thief & The Red Balloon
15 DECEMBER Up
Admission 7.30 p.m.
Film Begins 8 p.m.
Tickets £3.50

CONTACTS

Dedham Bookshop

☎ 323 271

Jax Horswill ☎ 322 328

Jacqui Freeman ☎ 322 263

**dedhamfilms @
btinternet.com**

To find out more about the screenings or

DEDHAM FILMS
visit our website

www.dedhamfilms.co.uk

THE LAST STATION



Cast & Synopsis : Directed by Michael Hoffman, 2009.

Actors include Christopher Plummer, Helen Mirren, James McAvoy and John Sessions. Nominated for two Oscars, the film is about the last months of Tolstoy's life. His wife Sofya (Mirren) battles for his soul and copyright of his literary works with the writer's manipulative disciple Chertkov, who regards himself as the guardian of the great man's reputation and wants the money from *War and Peace* to be used for the cause of passive resistance. Their battles are observed and recorded by Tolstoy's new secretary, Bulgakov, played by James McAvoy.

Review : Beautifully crafted and also sensationally well acted, it overflows with romance, heart and intelligence. An accessible and entertaining film with complicated and compelling figures at its centre.



NOTICEBOARD

Improve your Bridge!

Would you like to learn to play Bridge better?

There will be a new class at the Duchy Barn



Wednesday afternoons
1: 45 — 3: 45 p.m.

15 September to 8 December
£ 61 for 13 WEEKS

Enquiries, or to join, contact :

Mike Fisher ☎ 01394 388 237
www.mikefisherbridge.com

Colchester Community Voluntary Services

NEED VOLUNTEER DRIVERS WHO ARE CAR OWNERS

We are a non-profit organisation who provide transport for people who have difficulty accessing public transport.

We also need volunteer minibus drivers aged between 25 and 70.

CAN YOU HELP?

☎ 562 244

We reimburse your private car mileage and out-of-pocket expenses

Dedham Vale Hopper Bus Timetable

The bus operates daily (NOT Thursdays & Fridays)
from 3 July to 26 September

Departs Manningtree Railway Station at 9.40, and at 40 minutes past the hour every hour, the final service departing Manningtree at 16.40

Manningtree, Railway Station	09.40
Flatford Mill, Car Park Entrance	09.50
East Bergholt, Parish Church	09.53
Stratford St. Mary, Anchor P.H.	10.01
Dedham, Parish Church	10.05
Dedham Heath, Crossroads	10.09
Lawford, Service Station	10.18
Manningtree, Colchester Rd./Station Rd.	10.20
Manningtree, Railway Station	10.25

8 circuits a day - last one back at Manningtree Railway Station at 17.25

NEWSROUND

Beth Mitchell writes

TOUR OF BURGHLEY HOUSE



The Friends of Dedham Church are organising a trip to Burghley House, Stamford, Lincolnshire

for **Thursday 16 September 2010.**

Please Note

- Bookings by Mon. 16 August, please.
- The tour is limited to 50 people.
- This trip is offered to the Friends of Dedham Church. To join the 'Friends', please contact Membership Secretary, Maria Johnston, Highlands, Coles Oak Lane, Dedham CO7 6DR.

Itinerary: The coach will leave Dedham at 8.30 a.m., arriving at Stamford at about 10.30 a.m.

You would then be free to visit the Orangery Restaurant or the Garden Cafe for coffee (additional cost) and the Gift Shop. The House will open for viewing at

11 a.m. with guides and stewards in each of the rooms to answer any questions you may have. You are welcome to spend as long as you wish in the State Rooms.



We have arranged for a two-course lunch to be served at 1 p.m. in the Orangery Restaurant which will take about an hour. Thereafter you will have time to visit the 'Historical Garden of Surprises', the 'Sculpture Garden' or the 'Interpretation Centre'.

We will be leaving Burghley at 3.30 pm to go into Stamford,



where you can enjoy this delightful small town (scene of TV's *Middlemarch*) or visit the famous *George Hotel* for Afternoon Tea (additional cost). The coach will leave Stamford at 5.30 pm; arriving back in Dedham at about 7.30 pm.

You have a choice of either:

A) The coach trip, entrance to the House and Grounds and a two-course lunch, for £40, OR

B) The coach trip, entrance to the House and Grounds for £25 and take your own picnic or choose to eat in the self-service restaurant.

Beth Mitchell ☎ 322 072
if you have any queries about this trip.

A great day out
among Friends

Roy Laverick writes

STORM CLOUDS GATHER

Dedham Parish Council will not be exempt from the current round of government cuts, and our revenue expenditure will be tightly controlled. This is the money that we use to pay for the goods and services that are required to run the parish in an orderly way, such as grass cutting, litter clearance, public lighting, maintenance of the children's play area and our share of support for the Police Community Support Officer.

Revenue expenditure is currently financed through the Parish's element of Council Tax, 'The Precept', supplemented by money from Colchester Borough Council (CBC). It looks as if the CBC grant (which accounts for about 20% of our revenue budget) will be withdrawn. Whilst a 20% cut might not appear to raise insuperable problems, it will have to be applied to what is already a very tight budget. In accordance with government 'best practice' we have never accumulated large reserves, which in the current climate might have helped to carry us through the lean years. For some time we have gone to great lengths to keep our costs to a minimum. You may have seen councillors voluntarily performing menial tasks, in order to avoid expenditure on employing contractors. We are not involved in any projects that may easily be postponed or shelved in order to raise funds.

Thus we are reviewing our revenue expenditure to establish where cuts in our routine outgoings might be made, and we are deferring all but essential spending. We will request an increase in our element of the Council Tax only if it is unavoidable.

Our capital expenditure (purchase of new pieces of equipment) is financed primarily by grants from a wide range of organisations and will probably be trimmed (because of the decreased availability of grants). We hope that it will still prove possible to carry out the routine replacement of time-expired equipment and install the long-awaited fitness trail on the Sports Field.

NEXT MEETING

The next Parish Council meeting will be at 7 pm Wednesday, 8 September, in the Assembly Rooms.



"I know he was churchwarden there for thirty years - but I don't think they will allow this headstone in the churchyard."



DEDHAM GUIDED WALKS

Take time to discover more about Dedham's fascinating and intriguing history from the Bronze Age, through Roman times and beyond to include its medieval wealth in the wool trade and, of course, its famous connection with England's greatest landscape painter, John Constable.

Join our knowledgeable Guides on a walk through this charming village at the heart of the Dedham Vale Area of Outstanding Natural Beauty. The walk concludes at Castle House, with an opportunity to see the impressive art collection at the former house and studio of Sir Alfred Munnings.

Tours will run on the following dates:

5, 15, & 29 August

12 & 26 September

Tours meet at Dedham Car Park at 2pm.

Adults £5 Children (5-18 years) £2

Admission to the Art Museum is included.

The walks last around 2½ hours. Distance about 2½ miles. Allow an hour to explore Castle House and for refreshing afternoon tea in the new Studio Tea-room. Book a place through *Dedham Vale AONB and Stour Valley Project*

☎ 01473 264 263

Bookings can be made online:

www.dedhamvalestourvalley.org

NOTICEBOARD



GARAGE SALE @ THE VICARAGE

**Bank Holiday Monday
30 August**

10 a.m. - 2 p.m.

*in aid of
Lauren Moate's Gap Year*

Dedham EPPa Group



CHILDREN'S BOOKS WANTED

*Please donate unwanted books to
Dedham CE Primary School
Lending Library.*

We would like books
suitable for children aged 7-11
to borrow and read at home.

Please leave donations at the
school or contact
Katy Williamson ☎ **323 345**
We may be able to collect.

Côr Meibion Bro Glyndŵr — Welsh Male Voice Choir

AN EVENING OF SONG



Dedham
Parish
Church

7.30 pm SATURDAY 23 OCTOBER 2010

Tickets £10

*Proceeds to The Childrens Society and
The George Young Memorial Fund
(50% of the profits to each fund)*

Further details and tickets from
Ian Sutherland ☎ (01206) 272 486



NEWSROUND

Sally-Ann Head writes

NEW EPPa LEADER

At the EPPa (Effective Partnership with Parents) AGM, the group said a sincere thank you to Kate Ranson, retiring Chairperson, for her considerable contribution to the success of our many projects, all aimed at enhancing and enriching the school experience for children, their families and the local community. We wish Kate well and extend a warm welcome to her successor, Katherine Montgomery.

DRAMA & PIZZA

We are delighted that mums Allison Ilsley and Helen Sims have volunteered to start up a Drama Club for Class 3 and Class 4 children. All are enjoying this opportunity to develop acting and public-speaking skills.

On a Saturday in June, thirteen Year Five children came into school to make 'Penalty Shoot-Out World Cup' pizzas. They had designed their own pizzas such as a 'football-pitch' pizza and a 'winning-trophy' pizza and prepared the food in the new hall amidst a hungry audience. When cooked, the children served the food and people were asked to vote for their favourite one. All the children worked very hard and produced results of which they can be proud. However, as in the World Cup, there can be only one winner: that was team 'Pizza Eaters' consisting of Lewis Browning, Callum Cesareo, Charlie Clarke, Piers Hobson, and Ben Pearce. Well done!

Laura Valentine writes

YOU SHALL GO TO THE BALL!

A year ago we were looking forward to completion of our building work and today the school is looking wonderful and the children are reaping the benefits of our new facilities.

With new staging, lighting and a large hall, the Key Stage 2 drama production took place in school this year. The story of *Cinderella*, told through the songs of Abba, was extremely well received. The children's enthusiasm when singing, dancing and acting was a delight to observe. There is certainly some great talent blossoming at school.



Sports Day was a huge success. Congratulations to Munnings house who won the House Cup this year. Parents were invited to spend the day at school and children enjoyed the opportunity to have a lunch-time picnic with their families. The sun shone down on the Strawberry Fayre this year and the hard work of our parents raised over £1,200 for school funds.

Finally, thank you to the community from the children and staff. The school goes from strength to strength made all the easier by the help and kindness of parents and local people. We wish you all a safe and happy summer.

NOTICEBOARD

AUGUST BANK HOLIDAY

DEDHAM

VILLAGE

DAY

MONDAY
AUGUST 30
10AM-5PM



Come & enjoy a day in this historic village. Lots to do and see, plus a market, antiques fair, stalls, entertainment and food!

Pick up a programme on the day for times and activities

NOTICEBOARD

DEDHAM ARTS GROUP

The Summer Exhibition will be held at Littlegarth Studio, High Street Dedham

Saturday 28 August until Monday 30 August 2010.



Admission is free
Exhibition open daily :

11 a.m. until 5 p.m.

There will be a private viewing open to members and their friends on Friday 27 August at the Studio at 6 p.m.



Mission
Cake Bake

A CAKE STALL

Will be in the church porch on

**Saturday 14 August &
Saturday 25 September**

10am to noon

Dedham Run 2010

11 a.m. Sunday 26 September

Dedham Playing Field & Duchy Field
10k Race (measured) & 3k Fun Run
Individual & Team categories

Medals, Trophies & Cash Prizes!
Entertainments, Refreshments, Changing Facilities,
Results Service

Entry forms and more details available from our website:

www.dedhamrun.co.uk

☎ 01206 322 263

also available from **Dedham Post Office**

All proceeds to
Dedham C.E. Primary School

10K sponsored by Oaks Hospital 3K sponsored by St. Joseph's College



PAST TIMES

Once again groceries were delivered around the village mainly by the young lads on their trade bikes. Tony Clifford remembers this as being his first job, aged fourteen. He remembers delivering to the furthest away first, enabling him to cycle slowly back through the Drift, past the playing field in order to catch a little of the local football match before returning back to base. A little further along from Spearings was (and is) the **Co-op**, which had once been a branch of W.H. Smiths. On the corner of Mill Lane is **The Essex Rose** which was also a café then. At the back of **Royal Square** (which was called **Market Square** until the visit of Queen Mary in 1937), was **Gooch's Chemist Shop**. Inside on the right hand wall were a fascinating amount of small wooden drawers containing many pills and potions.



Tony Cottee on the Mill pond

Down **Mill Lane**, was once the busy **Clover's Flour Mill**, owned by Harold Clover, that provided employment for many people. It was to the mill pool that the young were drawn and where many learnt to swim with the guidance of older ones. As the young ones felt more confident they would swim across to a small island close to the edge of the pool and the next step was to swim right across to the other side with an older child. At the age of nine or so, after an exiting afternoon, Tony remembers running home and excitedly announcing to his unsuspecting mother Mabel, "I swam across the Mill Pool today Mum!"

In the winter months, the meadow on the way to Flatford would be flooded and frozen over. Keen locals would get their skates out to enjoy the annual recreation. Others would play their own version of ice hockey, dressed in duffel coats, short trousers and lace-up shoes, while some made long slides across the ice.

Memories that conjure up a picture of fun, freedom and adventure, far removed from the modern distractions of TV, computers and mobile phones. Local boys would also play football in the road, getting most put out at the sound of any approaching motor car which would disturb their game. Long hot summer days spent tracking across the fields in gangs, communicating on their 'telephones', made from tin cans connected by string. Girls would gather blackberries, returning home for mothers to make them into delicious pies and jam.

One last memory of those past years, still to be seen is the unusual and elegant sight of the Greek temple boathouse, built beside the river on the way to Stratford St Mary. It was built in 1939, and the architect, once again, was Raymond Erith.

Georgina Cottee

PAST TIMES

VILLAGE MEMORIES *as remembered by Tony Cottee and others and told to Georgina Cottee*

Take a step back into the 1950's and beyond; try and imagine the atmosphere of our village, nestling in the Vale. At that time the country was recovering from the effects of World War II and village life was very different from today. Visitors were in the minority and vehicles just as rare. Intermingling with village life were many fascinating characters. The backdrop of Constable scenery would still have been as beautiful, the architecture just as interesting but many more of those buildings had businesses, keeping Dedham more self-contained.

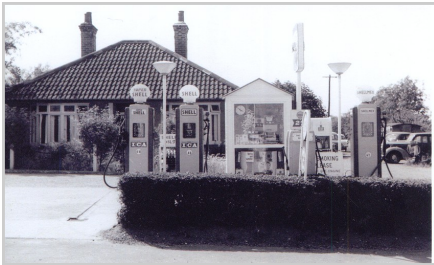
On the corner of **Shoebridge Hill** and **Stratford Road**, at the west end of the High Street, was Freeman's clothes and shoe shop. Bill Freeman, was a pleasant character who lived with his brother Eddie who was deaf and dumb. Bill was always polite and well turned out. Each day he wore a collar and tie and a clean heavy white cotton apron to serve his customers politely.

On the south side of the High Street heading east is **Wheelwright's Cottage**. Next door is an old building which was originally the wheelwright's workshop. Beautifully restored by Harry Humm, a master builder who cleverly placed his initials HH within the pattern of the brickwork, it was used by Harry Griffith, an antiques dealer, for storage. Humm, a rugged looking man with longish hair, topped with a trilby hat, was often seen passing through the High Street with a small cart attached to the back of his bicycle. He had made it look like a miniature gypsy caravan. In it he transported a variety of small terrier dogs that looked out of every window. More dogs would travel in a basket on the front of the bicycle and on a frying pan fixed on the crossbar, its paws resting on the handlebar. In the evening this menagerie was to be seen parked outside the **Sun Hotel**, or the **Rose & Crown** public house, which was near **No. 1 Dunton's Almshouses**, where Harry lived. He would sit outside playing his accordion, after a little light refreshment.



Rose & Crown P.H.

Further down the High Street on the left is the **White House**, once owned by Rev'd C. Woods, who took the two top storeys off, perhaps to enable a better outlook for his new house, **The Croft**, which had been built in the grounds. In the 1950's **Littlegarth School** moved into the White House and was run by the founders, Miss Betty Mallet and Miss Barbara Erith. Next door was once the blacksmith's cottage and the forge, which became **Dedham's first Garage**. This was started in the 1920's by William Ephraim Tapsfield Cottee. By the mid-fifties it was run by his son Jim Cottee. Jim was a mechanic but also mended bicycles and lawn mowers, delivered paraffin and sold petrol at about 3s.11d. a gallon (20p).



He would open up almost anytime, to oblige a customer in need of goods or petrol and also provided a local taxi service and long distance for local gentry. The **West End Garage** was developed from the original village forge. It now operates only from the north side of the road and is run by the third generation, Tony and Dennis Cottee, who although

they no longer sell petrol are responsible for keeping many grateful local customers' cars on the road.

Further down on the right, past the **Assembly Rooms** (then called the **Hewitt Memorial Hall**) and set back from the road, is **Dedham House** which was owned by Raymond Erith, the well-known architect. He had many commissions around the country including the renovation of Nos. 10 and 11 Downing Street, and the new building of number 12, which took place from 1959/62.

Almost opposite Dedham House, there is a small property on the corner of **Threadneedle Street** with an unusual square bow window, now an estate agent, Smiths. This used to be **Percy Hunnaball's fish shop**. Percy is remembered for his delicious homemade ice cream, which he would deliver on his bike, with a large icebox on the front.



The next building along on the left is the **Old Telephone Exchange** which was Raymond Erith's architects office, now Quinlan and Francis Terry Architects LLP. Previously a part of this building was also the kindly **Mrs Hitchcock's sweet shop**, perfectly situated opposite **School Lane**. Tony remembers running down to school each morning, picking up a stick along the way, rattling it along the metal posts of the little Orchard as he ran, pushing open the sweet shop door which set off a large clanging bell, that continued to clang long after Mrs Hitchcock appeared. Decisions had to be made, which sweets from the selection of large screw-top jars on the shelves, before dashing down School Lane to the primary school.

On the corner of **Princel Lane**, was **Ted Eley's Bakery**. Tony remembers being sent down on a Saturday mornings to the bakers to wait for the fresh bread or hot rolls to come out of the oven in the bake house behind. As he waited with the delicious aroma of freshly baked bread drifting through the bake-house, he would watch Frank Payne mixing the dough, always with a cigarette in the corner of his mouth and ash flying - long before the constraints of 'health and safety.' This did not deter the young shopper who would run home to see the hot crisp rolls split open by mother, Mabel, and would eat them eagerly, dripping with butter.

In a tiny cottage in Princel Lane called **The Nook**, lived an old lady and memorable character Mrs Tatum, who made her own furniture polish with beeswax and sometimes wore a curled wig in a gentle shade of blue. Mrs Tatum, knew Tornado Smith from Boxford, the famous motorcyclist who rode the 'Wall of Death' on Southend Pier. Lodging with her were two well-known characters, Jimmy Gunn and Frankie Ambrose, who cut up and sold logs. Frankie was also a master thatcher. A tale is still told of him falling from a tree as he cut the branch he was sifting on!

Back to the High Street and opposite the bakery, on the corner of School Lane, was **Shead and Dines** who delivered parcels around the area in a small lorry marked '*Ipswich Carriages - Colchester*'. They would also take rabbits to Colchester market for local people. Next door, at the back of the old Post Office, was where Bill Watson the village cobbler repaired boots and shoes. Crossing back to the Dedham Bookshop, which was previously the **Barber's Shop** where the young lads, with a mind for a more fashionable haircut, would be dispatched to see Mr Jarvis, pleading. "Not too much off please Mr Jarvis!" Before they knew it, the electric sheers were straight over their heads with no attention to the plea. After paying their 6d (2½p) they would leave, shorn and dripping with *Brylcream*.

Next door to the bookshop was another family business, Mr Eddie **Ray's Hardware Shop**, a real Aladdin's cave, crammed with stock and with barely a space anywhere. Mr Ray knew where to find things and customers were rarely disappointed. He had been in the Essex Yeomanry during World War I, so was very at home on a horse. It is remembered by some that he rode down the High Street holding a sword and declaring the outbreak of the World War II. Sadly, his shop was burned down in the 1970s.



Ray's Hardware Shop:
'Grandma's Greenhouse'

Next door was **Harry Griffith's antique shop**, many years before it had been '*The Old Curiosity Shop*' and is now sells household and garden treasures, and paintings by local artist Terry Jeffrey. Next door, slightly set back from the High Street, is **Evans & Son butchers' shop**, then run by Cecil Evans, when the Sunday joint of meat was approximately 15s (75p) and that would have to be enough for three days. Next door is the **Sun Hotel**, an old coaching inn. Further along is the present-day chemist (or 'pharmacy'), which once housed the very popular grocery store **Spearing & Son**. People would travel miles to this shop with its wonderful delicatessen, fresh local produce and a great selection of other goods. The aroma of freshly ground coffee would emanate throughout the shop, all were served very politely by Fred and Jack Spearing and local staff.