



Dedham Parish Magazine

April 2017

Dedham Residents
FREE Weekend
**MUNNINGS
AND THE
RIVER**
page 12

VIEWPOINT

Patience does not mean being passive

There is a Chinese saying that “one moment of patience may ward off great disaster, one moment of impatience may ruin a whole life”.

The word patience means the willingness to stay where we are and live the situation out to the fullest in the belief that something hidden there will manifest itself to us. A waiting person is a patient person. The impatient person is always expecting the real thing to happen somewhere else and therefore wants to be elsewhere. The moment is empty. But a patient person dares to stay where they are. Living patiently means to live actively in the present and wait there. Patience is not passive. It involves nurturing the moment and paying attention to what is happening in the present.

Patience is also an aspect of love. One of the most popular readings at weddings begins “*Love is patient and kind.*” A patient person is also a loving person who enriches the lives of all they come into contact with.

We Christians are now in the period of Lent, a time when we can reflect on our spiritual lives and go deeper with God. On Palm Sunday (9 April)



we begin what is known as Holy Week leading us to Good Friday and Easter Day. In Jesus’s journey from Palm Sunday through to Good Friday and Easter Day we see him moving from being active to a place of patient waiting, which is not passive but an enormous work of love.

There are a number of services throughout Holy Week in which you can journey with Jesus and, perhaps for the first time, experience his love for you. I would like to invite you to check the Parish website (*page2*), *page 3* or the Church notice board to join with us this Easter.

The Reverend Carol Mitson

DEDHAM PARISH CHURCH

MINISTERS

Antony Wilson	Priest in Charge	☎01206*
Merv McKinney	Assistant Minister	323 919
Carol Miston	Assistant Minister	

SUPPORT FOR YOU
FROM THE CHURCH

*Sometimes things in life can
just get too much to cope with
on our own...*

CHURCH OFFICERS

Quinlan Terry	Churchwarden	322 370
Richard Hopkins	Churchwarden	322 361
Be Burleigh	Assistant Churchwarden	323 205
Suzanne Woods	Assistant Churchwarden	01255 870 640
Gabbie Watson	Verger	322 425

If you would like some
support or know of
someone else who would
like support please contact
Ann Shaw ☎322 192

MUSIC

Antony Watson	Director of Music	322 425
---------------	-------------------	---------

If you have been bereaved
or know of anyone in the
parish who has and would
like some support
please contact

FLOWER ARRANGERS

Helen Sims	Co-ordinator	321 286
Wendy Sarton	Weddings	323 027

Vee Druit ☎322 000 or
Ruth Higginson ☎322 598

PARISH OFFICE

Claire Arculus	Parish Secretary	322 136
----------------	------------------	---------

Assembly Rooms, High Street, Dedham CO7 6HJ
Tuesday 9am-11am Thursday 11am-1pm
www.dedham-and-ardleigh-parishes.org.uk

If you would like a lift to
church please contact
Ann Shaw ☎322 192 or
Ruth Higginson ☎322 598

If you have an urgent query, please contact Reverend Antony Wilson ☎323 919

MAGAZINE CONTENTS

Viewpoint.....1	Medical Matters7	Clubs & Societies 13
Dedham Parish Church2	Children's Page8	What's On: Theatre..... 16
Easter Services3	Primary School..... ..9	What's On: Films 17
Regular Services.....4	Historical Dedham..... ..10	What's On: Music..... 18
In Memoriam4	What to do in Dedham..11	What's On: Opera, Ballet.... 19
Parish Council6	Dedham News..... ..12	Editorial 20

*☎Throughout the magazine local telephone numbers omit **01206** area code, unless otherwise stated.

EASTER SERVICES

Dedham and Ardleigh Parishes

Palm Sunday 9 April

8am	Holy Communion	Ardleigh
10.30am	Parish Eucharist	Ardleigh
10.30am	Morning Worship	Dedham



HOLY WEEK



Wednesday 12 April

7.30pm	Film: <i>The Passion of the Christ</i>	Dedham
	<i>Come and watch this moving film directed by Mel Gibson depicting the last week of Jesus' life. Over 18s only.</i>	Vicarage

Thursday 13 April

7pm	Maundy Thursday Meal and Communion	Ardleigh
	<i>Bring some food to share as we gather to remember the events of the Last Supper.</i>	

Good Friday 14 April

2pm	Meditation at the Cross (1 hour)	Dedham
-----	---	--------

Easter Saturday 15 April

7pm	Tenebrae	Dedham
	<i>Worship in shadows a simple but moving service as we wait for Easter Sunday.</i>	

Easter Sunday 16 April

8.30am	Holy Communion (BCP)	Dedham
10.30am	Parish Eucharist and baptism	Ardleigh
10.30am	Holy Communion	Dedham



ReVive@5 Contemporary
St Mary's Church Dedham Informal worship for all ages
Fourth Sunday each month at 5pm Refreshments from 4.30pm

REGULAR SERVICES

Dedham and Ardleigh Parishes are now working together as one Benefice.

St Mary's Church Dedham		St Mary's Church Ardleigh	
1st Sunday in the month			
8.30am	Holy Communion	8.30am	Holy Communion
10.30am	Family Service	10.30am	Family Service
5.00pm	Choral Evensong	5.00pm	Choral Evensong
2nd Sunday in the month			
8.00am	Holy Communion (BCP)	8.00am	Holy Communion (BCP)
10.30am	Parish Eucharist	10.30am	Parish Eucharist
3rd Sunday in the month			
10.30am	Holy Communion	10.30am	Parish Eucharist
4th Sunday in the month			
10.30am	Matins (BCP)	8.00am	Holy Communion (BCP)
5pm	Revive@5		
5th Sunday in the month			
Usually a Joint Service - for time and location see church noticeboard or online www.dedham-and-ardleigh-parishes.org.uk			

Other Regular church events

Each Sunday at 9.45am	Prayer at St Mary's Dedham
Each Tuesday at 10.30am	Morning Prayer at St Mary's Dedham
Fourth Tuesday each month 10am -12	Friendship Group at St Mary's Ardleigh
Each Friday (<i>Term time</i>) at 6.30 / 7pm	Junior & Adult Choir Practice
Each Friday at 9.15am (<i>Term time</i>)	Bible Study at Littlebury House, Dedham

TOWER	9 April	Palm Sunday	21 April	HM The Queen's
FLAG	14 April	Good Friday		Birthday
DAYS	16 April	Easter	23 April	St. George

FROM THE REGISTER

Funeral: 8 Feb 2017 — David Archibald Evelyn LYLE (aged 86)

IN MEMORIAM

David and Patricia Dow

A plant breeder and a textiles artist



Patricia and David Dow

David and Patricia Dow's family would like to thank everyone in the village for their kindness to them in the last few years of their lives in Saddler's Cottage, The Heath, Dedham.

Patricia and David moved to Dedham in 1972 after 10 years of living and working abroad in New Zealand, Australia and America. There, David had been working as a plant breeder developing crops for increased food production in third world countries. He continued this work after his move to Dedham, working for Hurst seed company in Kelvedon. He also worked on the development of gardeners' favourites, such as the *Greenshaft* pea and *Rudbeckia Marmalade*, as well as

Triumph barley. He was a quiet campaigner for keeping a surgery in Dedham and opposed large housing developments proposed on Dedham Heath.

Patricia, who had specialised in textiles at art school, worked in Hollytrees Museum conserving the historic clothes. She repaired a number of the textiles in Dedham church, such as the beautiful altar frontal. With the exquisite pattern of bees embroidered on it, this is always a lovely feature of the church every Whitsun. She was a familiar sight on her bicycle going to and from the church with her basket loaded with church fabric.

For many of us, their stunning garden and home was an inspiration. It was a rural idyll where after a day working in the large borders of vegetables, flowers and fruit, the family would eat delicious homemade bread and cakes.

Patricia died on 13 February 2015 and David on 7 January 2017. They are both buried in Wrabness Green Burial Site.

Philippa Black

Dedham People

We welcome news about the people of Dedham - happy or sad.

If you would like to suggest an in memoriam or share a special story, please get in touch by email

✉ dedhameditor@gmail.com or contact Parish Office (page 2)

DEDHAM PARISH COUNCIL

BROADBAND SPEEDS UP FOR MOST BUT NOT FOR ALL

The Superfast Essex broadband programme has delivered considerable improvements to broadband speeds in Dedham. Most of the village now has access to improved services and you can check your own property by using the interactive map or postcode checker: www.superfastessex.org.



Service providers can advise on expected speeds which may not be the full Superfast speeds.

An area around Lamb Corner has not been covered by the programme because County Broadband says it plans to run a wireless commercial offering for that area. As a commercial service, this falls out of the government funded programme. Residents excluded from the government scheme can contact County Broadband on ☎**01376 562002** or through their website: www.countybroadband.co.uk

The Parish Council would be interested in any feedback about County Broadband's service.

Kevin Taylor

ANTI SOCIAL BEHAVIOUR

There have been a number of incidents of anti-social behaviour in the Monks lane and Coles Oak Lane area in recent weeks. If you notice anything unusual, please make a note and let the Clerk know.

LUNCH CLUB SUCCESS

The Parish Council is delighted to note the successful start of a luncheon club at the Essex Rose to be held usually on the first Monday of each month.



This idea was proposed at last year's Living Well Forum and was developed by the Church's pastoral team with the manager of the Essex Rose. 24 people attended the first event in March. Booking essential. ☎**323 101**

Christine Frost

ELECTORAL ROLL DEADLINE

County Council elections will be in May. If you have recently moved house and are not on the electoral roll, you must register by **13 April** in order to vote: www.gov.uk/register-to-vote

Next Parish Council meeting

Monday 3 April, 7.30pm in the Duchy Barn.

☎**01255 871483** ✉clerk@dedhamparishcouncil.org.uk

www.dedhamparishcouncil.org.uk

MEDICAL MATTERS

ARDLEIGH & DEDHAM SURGERY

An inspector calls...

The report of November's inspection by the Care and Quality Commission was received last month. It can be read on our website. The practice received a 'good' rating, with four recommendations for improvements:

- Near misses in dispensing should be logged alongside actual errors.
- The fridge for creams and medication should be monitored continuously in the same way as the vaccine fridges.
- Medication awaiting collection should be locked up.
- The authority for healthcare assistants to give vaccinations could be handled better.

The report was discussed with the Patient Participation Group on 21 March. We outlined the steps we had taken. However, locking up patients' medications may have to wait for a redesign of the surgery, planned later this year. If you have suggestions about the redesign, please let me know.

Stephanie Durrant



Ardleigh ☎ **230 224**

Dedham ☎ **322 290**

www.ardleighsurgery.nhs.uk

CONSTABLE MEDICAL PRACTICE

Storm prompts investment

As a result of the power cuts caused by Storm Doris on 23 February, the practice has decided to install an emergency generator to service the East Bergholt and Capel premises, even though long power cuts are rare. The storm cut power to the East Bergholt surgery for more than four hours. Clinicians and patients were diverted to Capel, but patients' records could not be accessed. The phone system for both sites went down. Refrigerated vaccines were spoiled. The effects on patients lasted a week or so, as appointments were rescheduled and vaccines replaced. The practice thanks patients for their understanding.

Avoid the Easter rush

Some patients' prescriptions were delayed after the New Year because of high demand during the Christmas holidays. To avoid any delays over Easter, patients should submit requests for repeat medication well in advance. This can be done online with a *SystemOne* account.

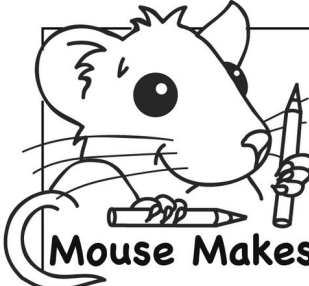
Early Closing for staff training at 1pm on **23 March, 26 April** and **18 May**.

Pete Keeble

East Bergholt ☎ **298 272**

Capel St Mary ☎ **310 203**

[www.constablecountry
medicalpractice.co.uk](http://www.constablecountrymedicalpractice.co.uk)



Mouse Makes

Colour in the cross, cut out and glue onto card to make an Easter card.

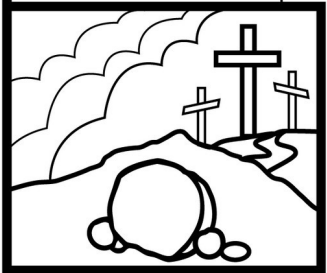


**HAPPY
EASTER
+
JESUS
IS ALIVE!**

Read the Easter story
in Luke 22-24



“God loved the world so much that he gave his one and only Son so that whoever believes in Him may not be lost, but have eternal life.”
John 3:16



+ THE CROSS +
is a symbol of
DEATH
It reminds us how
God’s Son, Jesus, was
put to death by being
nailed to a cross.

+ THE CROSS +
is a symbol of
LIFE
It reminds us
that Jesus has
risen from the dead
and is alive with
God in heaven.



+ THE CROSS +
is a symbol of
LOVE
It reminds us
God loves us so much
that through His Son
Jesus we can become
God’s children too.

+ THE CROSS +
is a symbol of
HOPE
It reminds us that
as God’s children we
will one day be with
God in heaven.

Dressed to thrill



What do you get when you cross *Harry Potter*, *Pinocchio*, *Fantastic Mr Fox* and *The Worst Witch*? A Dedham Primary School Book Day!



On 3 March, all pupils and staff were encouraged to dress up as a favourite book character for a day of book-themed activities. Whilst dressed up, the children all worked in mixed year group pairs to complete a game of 'Book Bingo' and completion of the game meant you could collect your World Book Day £1 book voucher. Can you find an animal book character in year three? Can you find a book character with a prop in year five? Can you find a Roald Dahl character in year two? It was super to see the children excitedly working together and taking time to talk about books.



A particularly memorable part of the day was the surprise re-enactment of the story *The Day the Crayons Quit*. Having thought their teachers had forgotten to dress up, the children were delighted to have their class teachers take to the stage in crayon costumes.

Laura Valentine
Deputy Headteacher

☎ 322 242

www.dedham.essex.sch.uk



HISTORICAL DEDHAM

Troubles at Mill

*In the March issue we wrongly stated that Dedham Mill closed in the 1980s because of a fire. **Charles Clover** sets the record straight.*

Dust in air can cause explosions. Any particle will do it: grain, flour, starch, even metals; and the designers of mills and factories know that precautions have to be taken. Records show that to this day many burn down with the eventual verdict of “no suspicious circumstances”.

One day in 1908, Dedham mill burned almost to the ground, in a conflagration that was both a catastrophe for the village and for the Clover family who then owned it. The mill was redesigned and rebuilt but it took until 1913 to reopen. A year after it burned, the owner and builder of the great 19th century mill, my great great uncle, Ebenezer Clover, died. History does not relate whether the fire affected him. But the loss of his life’s work cannot have been easy for the then leading businessman of the village and staunch Methodist who was involved in all sorts of good works. These included the dissolution of the village’s loss-making grammar school in 1888 and the placing of the funds in a trust which still exists.

As an epilogue, I remember in the 1960s rushing to the end of the garden to see smoke rising from a modern

aluminium structure on the east end of the mill. That was rebuilt to be demolished again for the present flats when the milling business failed. It took several fire engines, pumping water from the river, to save the present red brick structure. Otherwise the view would be very different today.



Dedham Mill in 1908, 1922 and 1938

WHAT TO DO IN DEDHAM

DUCHY BARN COMMUNITY CENTRE

The Watercolour Group

Mondays 10.30 - 1.30pm

*Anyone is welcome to join the group.
Contribution £2 per session includes
tutoring and refreshment.*

Coffee Morning

Tuesdays 10.30 - 12 noon

Thursdays 10.30 - 12 noon

Fridays 10 - 12 noon

Just turn up!

Bridge in Dedham

Wednesdays 2 - 5pm

Thursdays 7 - 10pm

Duplicate Bridge. No partner needed.

Contact *Judith Anderson Fowle*

☎**322 938**

Military Veterans

The last Friday in the month 10.45am

Youth Club

Fridays 7.30 - 9.15pm

Open to young people from the village.

Mark Dempsey ☎**07503 009 790**

The Duchy Barn is also available
for private hire: £15 per session
for local groups; £40 for parties.

Contact *Anne Rowledge* ☎**322 394**

SPORTS PAVILION

Parent and Toddler Group

Tuesdays 10.30 - 12 noon (*Term time*)

Baby Clinic with a Health Visitor

First Tuesday in the month (*Term time*)

*Friendly parent run group. £2.50 per
session incl. snack and drink.*

ASSEMBLY ROOMS

Antiques Fair

Sunday 2 April All Day

Horticultural Society

Wednesday 5 April 7.30pm

*Edward Martin, the archaeologist will
talk about the lost gardens of Suffolk.
Free for members, £2 for visitors.*

Horticultural Society Show

Saturday 8 April 2 - 4.15pm

Anyone can exhibit for free.

Free for members and
children, £1 for visitors.

Colin Biggins ☎**322 565**

✉colinbiggins869@btinternet.com

www.dedhamgardening.wordpress.com

Essex Youth Orchestra Concert

Sunday 9 April 7.30pm

*Charity Concert. £9, concessions £6, under
18s £4.50. Jenny Thomson* ☎**322 938**

✉jenni.thomson@essex.gov.uk

Dedham Films

Wednesday 19 April 7pm

See page 17 for details.

Dedham Players

Wednesday 26 - Saturday 29 April
7.45pm *See pages 13 and 16 for details.*

Little Squiggles

Thursday 6th April 10.30 - 12 noon

Easter Special for under 8's. Book
soon. *Sarah Hawes* ☎**07886 179 413**

For information and to make a booking
for **the Assembly Rooms** please
contact *Tracy Woods* ☎**323 921**

✉info@dedham-assemblyrooms.info

MUNNINGS EXHIBITION

Free entry for a weekend



Munnings:
Study for
“The White
Canoe”

A new exhibition at the Munnings Art Museum, **Munnings and the River**, will be open free of charge to Dedham residents between 2pm and 5pm on **Saturday 22** and **Sunday 23 April**.

The exhibition contains more than 40 paintings by Sir Alfred Munnings of the rivers that inspired him, including numerous works of the Stour at Dedham and Flatford.

Free entry for two adults and up to four children is offered to those who **bring proof of their address** with a postcode beginning CO7 6.

CHARITY WALK

Breast Cancer Now is organising a riverside walk on **Monday 8 May** to raise money for research into breast cancer. It starts at 9.30am from the Boathouse Restaurant in Dedham with 6 milers splitting off near Langham and 12 milers heading off towards Stoke by Nayland. Costs from £10 to £25. For further details and an application form please contact *Helen Allen* ☎**391 654** or **07850 9167**

✉helen.m.allen@icloud.com

www.breastcancer.org

MIND SEEKS VOLUNTEERS

Mind, the mental health charity, is looking for volunteers to help with:

- Attending events
- Co-ordinating collection pots
- Bucket collections
- Organising fundraising events

You only need to volunteer the time you can manage.

Call *Jenny Macpherson* ☎**764 600**

✉j.macpherson@mnessexmind.org

www.mnessexmind.org

MISSION CAKE SALE

The Mission Team have had a successful year in 2016, supporting a missionary family in South Africa and Beacon House, a Colchester homeless charity. Through the summer cake stalls, bric a brac sales, produce sales and the Christmas Fair we have raised £2,454. We thank all those who supported these events.

The cake stall will be held in the porch of Dedham Church on **Saturday 13 May** from 10am to 12 noon. We are always looking for volunteers to bake or to help on the stall. If you would like to help, contact *Ruth Higginson* ☎**322 598**.

THE GOOD NEIGHBOURS CLUB

Meets on Friday 14 April at 2pm, over afternoon tea and biscuits to deciding more outings of interest.

New members are welcome. Please contact *Betty Callaghan* ☎**322 116**.

DEDHAM NEWS

CARNAGE OUT OF COMEDY

The next production by Dedham Players will be **God of Carnage** by Yasmina Reza, translated from the French by Christopher Hampton. It runs from **26 to 29 April** in the **Assembly Rooms** at 7.45pm.

This black comedy is about two very different couples who meet to discuss their sons' playground brawl. Their manners disintegrate and chaos ensues. Claire Nicholson, a supremely talented actress, will be directing **God of Carnage**, which won awards both as a stage play and a film. Tickets, £8, from Shakespeare House Gallery or www.dedhamplayers.org.uk

MIDNIGHT LADIES' WALK

On Saturday 27 May, St Helena Hospice is organising walks of 3 or 7.5 miles, starting and finishing at Weston Homes Community Stadium in Colchester. This year's midnight walk theme is disco divas and the event is open to ladies age 11 and over. It costs £15 to walk 7.5 miles or £10 to walk 3 miles paid in advance, or to pay on the night £20 for 7.5 miles or £15 for 3 miles.

Many of the ladies walk in memory of a loved one or because the hospice has supported them personally.

www.sthelenahospice.org.uk

CLUBS & SOCIETIES

DEDHAM ARTS GROUP

Our next workshop with a professional artist is at the Stratford St Mary Institute on 25 April, from 10am to 12 noon. Michele Webber will provide tips on landscape painting and pen and wash techniques. A £5 contribution is asked for this session.

We are a very friendly group with around 30 members. We meet fortnightly, either in Littlegarth Studio, Dedham, or in the Stratford Institute. In the summer months we enjoy painting out of doors. People with all levels of ability and experience can enjoy exploring a wide variety of topics and media, often with the help of visiting professional artists.

Following a display of our paintings at Colchester Library during March, we are planning a special exhibition in Dedham Parish Church from **24 to 28 October**. This will be to celebrate our 50th anniversary and it will be in aid of East Anglia's Children's Hospices. Paintings by children from Dedham Church of England Primary School will also be on view.

In addition, we have a small exhibition throughout the year at the Essex Rose Tea House in Dedham.

Visitors to our studio sessions and new members are welcome. For more information please visit our website:

www.dedhamartsgroup.com

Jill Wilson

CLUBS & SOCIETIES

CLUB IN FOCUS

Dedham Footpath Group

The Group was set up in 1975, initially to galvanise support amongst local people against a farmer's plans to close certain footpaths. Since then the group has been more concerned with offering regular organised walks in and around Dedham and surrounding areas with an emphasis on friendly and enjoyable opportunities to experience the tranquillity of the Dedham Vale and some of the countryside beyond. The village itself boasts more than 40



definitive footpaths, many of which are rarely used, and whilst the popular routes from Dedham to Flatford and East Bergholt feature in the walk programme, leaders also try to include some of the lesser known paths.

A walk is held on the first Sunday of every month with two or three evening walks during the May, June and July period. Walk leaders will select the start time and meeting place.

Membership costs £6 annually which is used for some third party insurance and postage. The six-monthly walk programme is sent off in June and December each year.

Members are encouraged to become walk leaders which simply means sharing a favourite walk of approximately five miles anywhere within a radius of ten miles of Dedham and selecting the start and finish point. There is usually a chance after the walk to meet for refreshments in a pub or tea room. The annual general meeting is held in early summer with this year's starting at 8pm on Friday 26 May in the Marlborough Head Inn. This follows a walk which starts at 6.30pm from the War Memorial.

A regular walk of a few miles is acknowledged to be one of the finest ways of keeping fit and when it can be combined with the chance to meet like-minded people whilst enjoying the wonderful local countryside through the seasons it is slightly surprising that more people are not attracted. Many of our members are retired but all ages are welcome to come along and share the pleasure of an easy five to six mile outing on any of our walks through the year and perhaps consider becoming members themselves.

John Osborn Committee Member
✉ johnfosborn@btinternet.com

[www.essexinfo.net/
dedhamparishcouncil/walks/
dedham-footpath-group/](http://www.essexinfo.net/dedhamparishcouncil/walks/dedham-footpath-group/)

CLUBS & SOCIETIES

FOOTPATH GROUP EVENTS

Sunday 2 April

Meet at the free car park, Wivenhoe at 10.30am for a 4 to 5 mile walk. Leader *Margaret Smith* ☎**822 797**

Sunday 7 May

Meet at the rear of the car park, Mill Lane, Dedham at 10.30am for a 4 to 5 mile walk. The walk leader is *Geoff D'Arcy* ☎**323 489**

Friday 26 May. Meet at Dedham War Memorial at 6.30pm for a ramble before the AGM at the Marlborough Head at 8pm. See *page 14* Enquiries *Martin Broom* ☎**322 578**

MENS' PROBUS CLUB

Probus is a club that gives retired and professional businessmen the chance to meet and socialise. New members are welcomed. Its structure is simple and costs are kept to a minimum.

It meets on the first and third Wednesday of each month at 10.30am at the St John Ambulance headquarters, Manningtree CO11 1EB.

On **Wednesday 5 April** *Julian Wong* will talk about the charitable work of *Mary's Meals*.

On **Wednesday 19 April** *Jim Lowe* will describe the work of the *Alzheimer's Society*.

Please contact Speaker *Dave Carman* on ☎**01255 880 202** for further details.

STOUR VALLEY U3A

The University of the Third Age aims to encourage enjoyable learning and friendship for retired people. Groups include language study, country walking, computer studies, gardens, churches and historic buildings visits.

Meetings are held at the Constable Hall, Gandish Road, East Bergholt, CO7 6TP. Annual membership £12.

On **Wednesday 12 April** at 2.15pm *Amanda Richmond* will tell the story of **two Suffolk teachers' ascent of Everest**. A teacher, mountaineer skier, traveller and bell ringer will describe the six years' preparation and the hardships.

On **Wednesday 10 May** at 2.15pm *Emma Roodhouse*, Art Curator of the Colchester and Ipswich Museum Service, will talk about the prolific career of **Leonard Squirrel**, the East Anglian painter, concentrating, on his works from 1912 to 1978 in the Ipswich Council collection.



Leonard Squirrel

Secretary *Val Pretty* can be contacted online www.stourvalleyu3a.org.uk.

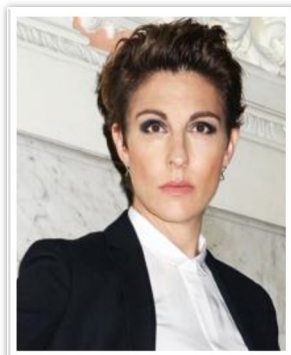
WHAT'S ON: THEATRE

Wed 29 Mar **A Streetcar Named Desire** by Tennessee Williams: Headgate Theatre Colchester 7.45pm to 1 Apr.

Fri 31 Mar **I Am Beast**, a drama about grief and imagination: The Mercury 8pm.

Sun 2 Apr **Pygmalion** by George Bernard Shaw: Headgate 7pm to 3 Apr.

Thu 6 Apr **Twelfth Night** by William Shakespeare: NT - LL 7pm at Odeon Colchester and Firstsite and Lakeside Theatre.



Tamsin Greig
as Malvolia,
**Twelfth
Night**
6 Apr

The Time Machine - adapted from H G Wells's story: The Quay Theatre Sudbury 7.30pm to 8 Apr.

Mon 17 Apr **Robin Hood** Easter Pantomime: Regent theatre 6pm.

Tue 18 Apr **How To Disappear**; Wolsey Young Company: New Wolsey Theatre Ipswich 7.45pm to 29 Apr.

Wed 19 Apr **Tamburlaine** by Christopher Marlowe, a modern version; The Mercury 8pm to 20 Apr.

Thu 20 Apr **Metamorphosis** by Franz Kafka, adapted by Steven Berkoff: Headgate 7.30pm.

Rosencrantz and Guildenstern are Dead by Tom Stoppard: NT - LL 7pm at Firstsite Colchester and at Lakeside.

Wed 26 to 29 April: **The God of Carnage**, translated by Christopher Hampton: Dedham Players 7.45pm at Dedham Assembly Rooms

The Wedding - Gecko: The Wolsey 7.45pm.

Wed 26 Apr **Julius Caesar** by Shakespeare: RSC - LL 6.45pm at Lakeside and at Odeon Colchester.

As You Like It by Shakespeare - Lamda: Theatre Royal Bury 7.30pm to 27 Apr.

Thu 27 Apr **Play Something** by Paul T Davies: Lakeside Theatre Colchester 7.30pm.

Fri 28 Apr **Hidden**, a love story about invisible disability: The Mercury 8pm to 29 Apr.

Tue 2 May **Northanger Abbey**: The Wolsey 7.45pm to 6 May.

Thu 4 May **Every Brilliant Thing** by Donny MacMillan and Jonny Donahoe: Lakeside 7.30pm.

In the Assembly Rooms Dedham



Wednesday 19 April 2017

The Eagle Huntress

Directed by Otto Bell 2016

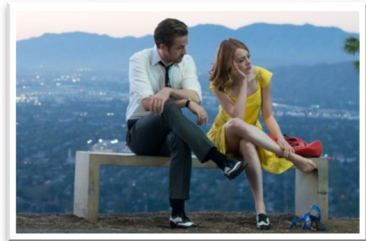


The Eagle Huntress follows Aisholpan, a 13-year-old girl, as she trains to become the first female in twelve generations of her Kazakh family to become an eagle hunter and rises to the pinnacle of a tradition that has been handed down from father to son for centuries. Set against the breath-taking expanse of the Mongolian steppe, the film features some of the most awe-inspiring cinematography ever captured in a documentary.

Wednesday 17 May 2017

La La Land

Directed by Damien Chazelle 2016



Mia, an aspiring actress, serves lattes to movie stars in between auditions and Sebastian, a jazz musician, scrapes by playing cocktail party gigs in dingy bars, but as success mounts they are faced with decisions that begin to fray the fragile fabric of their love affair, and the dreams they worked so hard to maintain in each other threaten to rip them apart.

Subject to availability and release date

Admission 7pm Films begins 7.30pm

Tickets £4 from Shakespeare House Gallery or at www.dedhamfilms.co.uk

Tickets for all films will be available from the date of the previous screening

Refreshments available before the films & screenings and in the intervals

Contacts: Jax Horswill ☎ **322 328** or ✉ dedhamfilms@gmail.com

To find out more about Dedham Films visit **www.dedhamfilms.co.uk**

WHAT'S ON: MUSIC

Sat 1 Apr **Missa Solemnis** by Beethoven: Hadleigh Chorus 7.30pm at Hadleigh Church.

A Soirée of Song: Pimlott Foundation 5pm at Old House, Great Horkesley.

Mozart: St Botolph's 7.30pm.
Rutter and Fauré: Stour Choral Society 7.30pm at East Bergholt Church.

Wed 5 Apr **Suffolk Youth Music:** Aldeburgh 7.30pm at Snape.

Sat 8 Apr **Essex Young People's Orchestra** at St Botolph's, Colchester.

Handel, Haydn, Mozart: Haverhill Chorus 7.30pm at Hundon Church.

Samson by Handel: Ipswich Bach Choir 7.30pm at St John the Baptist Church Ipswich.

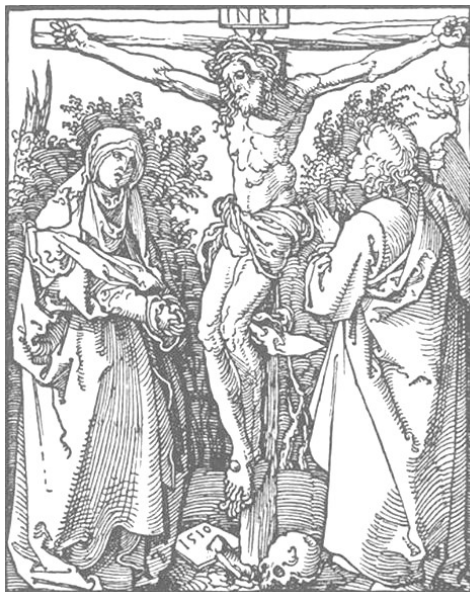
Church anthems: Phoenix Singers at Framlingham Church.

Easter Oratorio by JS Bach - Gabrieli choir & orchestra: Saffron Hall 7.30pm Saffron Walden.

Sun 9 Apr **Elijah** by Felix Mendelssohn: Sudbury Choral Society 7.30pm at St Peter's Church.

Cornysh, Byrd, Tippett, Howells & Leighton: **Crucifixus pro nobis:** Tower Chamber Choir 6pm at St Mary -le-Tower, Ipswich.

Players from the **Essex Youth Orchestra** Charity concert Dedham Assembly Rooms 7.30pm.



Woodcut: Albrecht Dürer
St John Passion 14 April

Sun 9 Apr **Handel, Mozart, Britten:** Woodbridge Choral Society 7.30pm at Snape.

Fri 14 Apr **St John Passion** by JS Bach: Aldeburgh 7.30pm at Snape

Sat 15 Apr **Membra Jesu nostri** by Buxtehude - Eo Nomine, vocal consort: Aldeburgh 12pm at Orford Church.

Britten-Pears Orchestra with Marin Alsop: Aldeburgh 7.30pm at Snape.

20th century sacred music: Aldeburgh Voices 3pm at Blythburgh Church.

WHAT'S ON: MUSIC, OPERA, BALLET

MUSIC continued

Sun 16 Apr **Young Person's Guide to the Orchestra** by Britten:
Aldeburgh 2pm at Snape.

Fri 21 Apr **Music from the coffee lands:** Studio Music Brightlingsea 8pm.

Sat 22 Apr **Jacqui Dankworth & Charlie Wood:** Aldeburgh 7.30pm at Snape.

Acoustic East: French Music & Song: Headgate 8pm.

Parry, Mendelssohn, Puccini: Trianon 7.30pm at St John's Ipswich.

Sun 23 Apr **Caroline Mitchell** (violin) - Dvorák, Berlioz, Elgar:
Lavenham Sinfonia 7pm at Lavenham Church.

Wed 26 Apr **Bernstein on Broadway** Platform Musicals & Plays:
Headgate 7.30pm to 29 Apr.

Fri 28 Apr **Ipswich school spring concert:** 7pm at Snape.

Sun 30 Apr **Graham Anthony Devine** (guitar): Headgate 5pm.

Brahms's Requiem (Come & Sing): Music in Felixstowe 3pm at St Andrew's Church.

Sat 6 May **Braintree Male Voice Choir** 7.30pm at Coggeshall Church.

Verdi, Handel. Fauré, Borodin: Lexden Choral Society
7.30pm at St Botolph's.

Elgar, Vaughan Williams:
University of Essex Choir & Essex Sinfonia 7pm at Snape.

Marta Kowalczyk (violin) and
Somi Kim (piano): Woodbridge Chamber Concerts
7.30pm at Woodbridge Church.

OPERA

Sat 22 Apr **Eugene Onegin** by Tchaikovsky: The MET - LL
5.55pm at Firstsite.

Wed 26 Apr **La Bohème** by Puccini - Opera & Ballet International: Regent theatre 7.30pm.

Sun 7 May **Lakmé** By Léo Delibes:
Swansea City opera 7pm at New Wolsey Theatre.

BALLET

Sun 9 Apr **A Hero Of Our Time:**
Bolshoi - LL 4pm at Odeon and Firstsite Colchester

Tue 11 Apr **Jewels:** Royal Ballet - LL
7.15pm at Odeon Colchester.

Wed 19 Apr **Coppelia:** The Australian Ballet - LL 6.30pm at Odeon Colchester.

You can find full details of these
and many more listings online
www.eamaa.org

PARISH MAGAZINE EDITORS

Change of editorship

Melanie Hargreaves has stepped down from the editorship of the parish magazine. Liubov Dordery and Max Wilkinson are taking over as editors.

Max, who lives on Dedham Heath, will handle the editorial contributions. Liubov, who lives on the High Street, will be responsible for design and layout.

We would welcome contributions and suggestions.

Please tell us about:

- Events in and around the parish.
- News and stories about people.
- Your views on local issues.
- Drawings, paintings or photographs that might be suitable for the front cover
- What you think of the magazine.



Your contributions and comments should be sent by email to

✉ dedhameditor@gmail.com

Contributions may be sent by post to the Parish office (see page 2).

We look forward to hearing from you.

Editors	Max Wilkinson Liubov Dordery	✉ dedhameditor@gmail.com
Advertising	Martin Hole	✉ joandmartinhole@f2s.com

LOCAL ADVERT

Mobility scooter for sale

Lightweight, folds into a car boot,
as new condition, £650 or near offer

John Horrocks ☎ **393 532**

Printed by **Spingold**

☎ **262 751**

Spingold 
Design & Print

Deadline for next (MAY) edition: **Wednesday 12 April 2017**

Cover Illustration: "Barge on the Stour at Dedham" by Alfred James Munnings
Copyright the estate of Sir Alfred Munnings

It's time you visited Wheelers Wine Cellar
Your Local Independent Wine Merchant

- Over 350 wines available by the bottle
- Fine & rare wines in our fine wine showroom
- Private in-store tasting evenings & wine classes
- Friendly, expert advice from our experienced staff

Open Wednesday to Saturday 10am – 6pm
Birchwood Farm, Dedham, CO7 6HX
Tel. 01206 713560 | www.wheelerswine.co.uk



WHEELERS
Wine Cellar

SMARTPHONES

REPAIRS

NEW DESKTOPS

VIRUS REMOVAL

REMOTE SUPPORT



SPECIAL OFFER PC
CORE I3 PROCESSOR,
8GB RAM, 1TB HD,
DVD DRIVE & MORE..
£300 WITH 3 YEAR
WARRANTY

EXPERIENCED TEAM OF
LOCAL IT AND WEB EXPERTS
PROVIDING A FAST AND
AFFORDABLE SERVICE, FOR
PERSONAL & BUSINESS
CUSTOMERS.



- IT SUPPORT ON DEMAND
- PC AND LAPTOP REPAIRS
- APPLE REPAIRS
- VIRUS & SPYWARE REMOVAL
- TABLET & SMARTPHONE SETUP
- REMOTE SUPPORT OPTIONS
- FREE DIAGNOSTIC
- FREE HELPFUL ADVICE
- NO FIX NO CHARGE

10% OFF WHEN YOU
QUOTE THIS ADVERT

078 17 980538 / INFO@THEITSOLUTIONHUB.CO.UK
01206 587047 / THEITSOLUTIONHUB.CO.UK

MARK FAGE ARCHITECT

MODERN AND TRADITIONAL DESIGN
RESIDENTIAL & COMMERCIAL PROJECTS
LOCAL KNOWLEDGE AND SUCCESS

Tel **07976 655387** www.markfage.com

e mail mark_fage@btinternet.com

dedhamcakecompany.co.uk



personal
individual
handmade

01206 323 881

Dedham Retreats at
The Tallow Factory

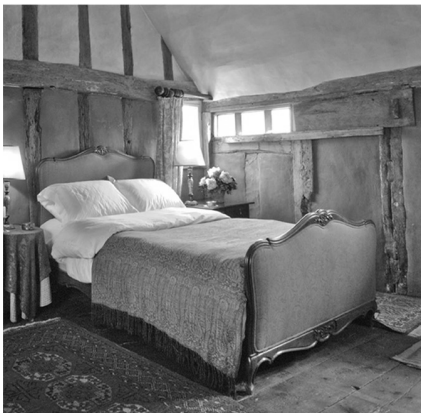


Yoga and Meditation
Self-Catering Retreats
Bed & Breakfast
Day Retreats

DedhamRetreats.com

hello@DedhamRetreats.com

+44 (0)7947 438430



Our holiday cottage agency is expanding into Essex

We are looking for properties of character to add to our agency

If you are looking into running a holiday cottage,
or have a suitable property already, please contact

Grove Cottages: Tel 01787 211 115

or email karina@grove-cottages.co.uk

www.grove-cottages.co.uk

Our occupancy rate reached **87%** in 2012

Riverside Designs

for all your interior design, hand finished blinds,
curtains and soft furnishings. Based in Dedham.

Tel: 07966 310 206

email: enquiries@riversidedesigns.co.uk



Labels To Love

Boutique & Designer Dress Agency



Lily & Me • Penella • Miss Sugar • Gaby's • Miss Shortbair

Lingerie by Triumph • Royce • Spanx

Designer New & Pre-loved Clothes

Nicole Fabri • Gucci • Boss • Dior • Karen-Miller

Open Tuesday to Saturday 9.30 am - 5.30 pm

www.labelstolove.co.uk

24 High Street, Hadleigh, Suffolk IP7 5AP

Telephone: 01473 807052



Mather & Co

SOLICITORS

For Conveyancing + other specialised property matters. Family, Wills & Probate and Powers of Attorney.

Efficient, flexible, local, and low cost friendly service.

Free parking at:

Hill House, Grove Hill, Langham, Colchester
CO4 5PJ. No parking problems just off A12.

Tel: 01206 322763 Fax: 01206 322895

gillmather@aol.com



Conveyancing
Quality



www.mathersolicitors.co.uk

SCOTT'S CAR

Private Hire Vehicle
Based in Dedham

Licensed to carry 4 persons
For ALL your travel needs

07528 751 577

HORIZON

LANDSCAPES
EAST ANGLIA LTD.

Design, Construction, Maintenance & Restoration

Tel: **01206 322 646**

Mobile: **07715 121 401**

M.A. Everett

6 Bargate Lane, Dedham, Essex



Dedham Vale Homecare Ltd
'Care with Integrity'

Dedham Vale Homecare is a local business caring for local people.

Our aim is to provide a flexible service to meet your identified personal needs with dignity and privacy.

Contact us today to discuss your personal requirements.

TAILORED CARE
RESPIRE CARE
COMPANIONSHIP
CARER RELIEF
MEAL PREPARATION
SHOPPING & VISITS

www.dvhc.co.uk - info@dvhc.co.uk - 01206 323761

Protect your nest egg..



Get the best local advice for all your legal needs

- Wills
- Powers of Attorney
- Tax Planning
- And much more

31-41 Elm Street, Ipswich, IP1 2AY
 01473 211121
 6 Church Street, Hadleigh, IP7 5DU
 01473 822102
 97 Hamilton Road, Feltham, IP11 7AH
 01394 283241

gotelee
 SOLICITORS

A.Slocombe General Builder

Hard Landscaping,
 Roofing and Property Maintenance

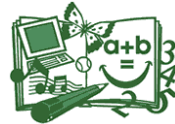
Brickwork, Blockpaving Drives,
 Carpentry

No job too small, for free friendly advice
 and estimates phone

01206 322 884 / 07786 871 364

DEDHAM Church of England PRIMARY SCHOOL

Nurture a Lifelong Love of Learning



**Parsons Field,
 Dedham, Colchester**
Telephone: 01206 322 242

We offer a broad, balanced and challenging education. We set high standards and encourage achievement. One class for each year group.

VISITS ARE WELCOME

Headmaster: Mr J. Aylott

www.dedham.essex.sch.uk

HOLIDAY COTTAGE

Long Road East

DEDHAM

Weeks, Weekends & Between Houses.

Tel. 01206 323 345 / 0797 9757 470

www.holidaycottededham.co.uk

E Mail owlbarn@live.com

CHARTERED ACCOUNTANT

Dedham based

Accounting & Tax Services and Financial Consultancy for small businesses Affordable rates

Accounts, self assessment, corporation tax, Quickbooks & Sage accounting software etc.

Call Philip Strangward on 01206 584913 or 07880 550000
for free initial consultation
www.philipstrangward.co.uk



The home of heating



Visit Bentley Fire Shop's extensive showroom to discover a stunning collection of home heating products, which will make a statement in any home. From the latest contemporary and traditional wood burning stoves, to exquisite fireplaces, eye-catching fires and beautiful central heating range cookers.

Featuring a live
AGA City 60

Be inspired this summer and plan ahead for a warm and cosy winter.

For more information call us on **01206 251118**
or visit www.bentleyfireshop.co.uk



Stoves



Fires & Fireplaces



Range Cookers

The SHEPHERD



FREEHOUSE & KITCHEN
MOOR ROAD, LANGHAM CO4 5NR
01206 272711

A family & dog friendly pub & restaurant
situated in the pretty village of Langham

Open from 11am serving lunch & dinner
(excl. Monday evenings)

Vegetarian and gluten free choices available

Private room hire for wakes, christenings
and family events

Outside catering also available

www.shepherdlangham.co.uk



WHITTLES

CHARTERED ACCOUNTANTS



Count on us to help you with your tax returns

Business advisory, tax, audit and accounting services for companies, charities, trusts and individuals

The Old Exchange, 64 West Stockwell St, Colchester, Essex CO1 1HE. Telephone: **01206 762200**
15 High Street, West Mersea CO5 8QA. Telephone: **01206 385049**

www.whittles.co.uk



SHAW ROOFING LTD.

“FOR ALL YOUR ROOFING NEEDS”

* SLATING * LEAD WORKS * TILING * FLAT ROOFS

FROM A SINGLE TILE REPAIR
TO A FULL STRIP AND RE-TILE OR NEW BUILD

Call Scott on: **07976 771 164** fax: **01787 828 812**

email: shawroofing@hotmail.co.uk

Stones Throw, Crocklands, Greenstead Green CO9 1QY

The Retreat



State Registered Senior Hair Stylist

Cutting and Colouring Specialist

Hair
& Beauty

01206 323450

Open Tuesday - Saturday

Loyalty Scheme for Treatments

High Street, Dedham, Colchester, Essex. CO7 6HA

www.theretreatedham.com



dermalogica



MOROCCANOIL



Please mention **Dedham Parish Magazine** when you contact any of these Advertisers

F

Est
1999

KNOWLEDGEABLE. RELIABLE.
FRIENDLY. LOCAL

Book keeping, Accounting
VAT returns
PAYE, CIS, Self-assessments/Tax returns

Diane Steele AAT
Accountant Technician

E: contact@dysaccounts.co.uk

T: 01255 860265

FJG

FISHER JONES GREENWOOD SOLICITORS

Legal advice for you, your family and your business



With top tier Legal500 and Chambers & Partners rankings, our friendly and experienced team offer a full range of commercial and individual legal services, no hidden costs, Saturday opening hours and fixed fee packages.

Get in touch with the local experts today to see how we can help.

www.fjg.co.uk ■ 01206 835300 ■ info@fjg.co.uk

Charter Court ■ Newcomen Way ■ Colchester Business Park ■ CO4 9YA ■ Free parking available

THE **DEBBIEMILLAR**
SCHOOL OF DANCE
CLASSICAL BALLET - TAP - MODERN THEATRE - DISCO



Dance Classes for All Ages & Abilities
for Fun, Recreation or Progressive ISTD Examinations
Toddlers, Pre-School, Children, Teens & Adults
Ballet, Tap, Modern, Jazz, Disco, Street & Fitness
Special "Boys Only" Class



For further details phone 01206 230806 or email debbie@debbiemillar.co.uk

R J Woods & Co Accountants

- Accounts
- Self Assessment Returns
- Company Tax Returns
- VAT
- Book-keeping
- Tax Planning
- Payroll

Confidential advice
Free initial consultation
Call Rob or Tracy Woods

Tel: 01206 322 604

Email: info@rjwoodsandco.com
Website: www.rjwoodsandco.com

BAILAND CONSTRUCTION LTD

EXQUISITE ATTENTION TO DETAIL

TOAD HALL
THE HEATH
DEDHAM
ESSEX
CO7 6BT
01206 323230

WWW.BAILANDCONSTRUCTIONLIMITED.CO.UK
ENQUIRES@BAILANDLTD.CO.UK



Established in 1989
The Finest Tennis Courts and Artificial
Sports Surfaces

- Maintenance
- Refurbishment
- Resurfacing
- Installation
- SAPCA Principal Contractors

For a free no-obligation site survey and quotation
please feel free to contact us.

T: 01245 380 158 | E: info@tennis2000.co.uk

DEDHAM IRONING SERVICE

TIRED OF IRONING?
Let us do it for you!



Ring Helen on
01206 322 554



Britannia Flooring

CARPET FITTING
SUPPLY & INSTALLATION
CARPET & VINYL SPECIALIST
FLOORING ACCESSORIES

Tel: 07740 829 499 - 07933 157 121
www.britanniaflooring.co.uk
(Based In Dedham)

DEDHAM VALE TREE SURGERY

NPTC qualified, fully insured
24 hr emergency tree work
Site clearance
Logs and wood chip supplied
Pests and disease identification



All tree work undertaken
Crown reduction and shaping
Crown lifting and thinning
Pruning and pollarding
Felling, sectional dismantling

info@dedhamvaltreesurgery.co.uk mobile 07756 811098
www.dedhamvaltreesurgery.co.uk phone 01206 323056

S. J. Smith PLUMBING AND HEATING ENGINEERS

**From an extra radiator
To a full heating system**



- * Boiler changes
- * Bathroom suites
- * *Aqualisa, New Team*
& other showers
- * Electric showers
- * All heating and
plumbing repairs

**FREE ESTIMATES
CORGI REGISTERED**

22 Bullock Wood Close
Colchester

**COLCHESTER
843 493**

STEVE'S RUBBISH REMOVALS

Houses • Gardens • Sheds
Garages • Commercial

Licensed waste collector . Free quotes
01206 322798 / 07980 204057

www.stevesrubbishremovals.com



Wendy's Curtains

Professionally made to measure
curtains, roman blinds and soft
furnishings, with a wide range of
fabric samples.

☎ 01206 395996
☐ 07966 718 414
✉ info@wendyscurtains.com
➤ www.wendyscurtains.com

Diana M Cleaning Home and Office Cleaning



07925624123
dianamarinova61@yahoo.co.uk



Ardleigh Pre-School

For ages
2-5 years

Outside catchment
area welcome

Funded places available for
all 3 year olds
(from the term after their third birthday)

Funded places also available for some 2
year olds
(subject to criteria)

3 Hour Session
only £12

Ardleigh Village Hall
Station Road
Ardleigh
Essex
CO7 7RS

07517 430114

admissions@ardleighpreschool.co.uk
www.ardleighpreschool.co.uk

Manningtree Body Repair Centre

Riverside Avenue West
Lawford

Manningtree
Essex

CO11 1UN

Tel / Fax: (01206) 393 191

All Vehicle Body Repairs & Refinishing
work undertaken including:

- Insurance Work, MOT welding,
Panel Beating and Spraying
- Assistance given to "Non-Fault"
Third Party Insured
- Collections and Delivery

JP WILSON PLUMBING AND HEATING



TEL: 01206 322141

MOBILE: 07445 270703

EMAIL: jon@jpwplumbing.co.uk

www.jpwilsonplumbingandheating.co.uk

Bathroom Installation
Boiler Installation
Faults & Servicing
Landlord Safety Certificates
Unvented Systems
Fully Insured

Chartleigh,
East Lane,
Dedham,
Essex
CO7 6BE



553974

BLAND LANDSCAPES LTD

Qualified Tree Surgeons and Landscape Specialists

All aspects of tree surgery including:

Pruning ▪ Felling ▪ Clearing
Reducing ▪ Reshaping

All types of hard and soft landscaping including

Fencing ▪ Turfing
Drives ▪ Patios

Woodchip Mulch Available ▪ Contract Grass Cutting

Suppliers of Seasoned Logs for Woodburners and Open Fires ▪ Full Insurance Cover

For estimates and advice call

01206 230 882 or 07710 770 280

Ivydene, Burnt Heath, Ardleigh, Colchester, Essex CO7 7SY

**JANE
BURTON**

TRADITIONAL FLOORING
Carpet, Stone, Wood, Amtico,
Slate & Marble, Vinyl, Rugs

Designed to your personal requirements
Welmans, Lamberts Lane, Great Tey, COLCHESTER
Tel: (01787) 222 770 Fax: (01787) 222 760

Your natural
choice for floor
coverings

**DEDHAM'S EAGER BEAVER
HANDY MAN SERVICE**



- Grass Cutting
- Hedging
- Gardening
- Garden Maintenance



**ANY JOB YOU HATE
I CAN DO**

Ring Philip: 07939 250 018
After 6pm 322 554

HUNNABALL FUNERAL SERVICE

York House, 41 Mersea Road,
Colchester, CO2 7QT



*We are an established family firm
dedicated to upholding the traditional
values of respect and dignity and
providing the very best care.*

Tel: (01206) 760 049 (24Hrs)
For immediate personal attention

THE SUN INN



High Street, Dedham, Essex CO7 6DF
01206 323351 - www.thesuninndedham.com

 **SUNINNDEDHAM**



Get Your Lawn Mower Ready
Richard Kimberley Services
ALL PEDESTRIAN
ROTARY AND RIDE ON MOWERS



Engineering workshop established over 20 years ago. Our regular customers come back year after year to have their lawnmowers prepared for the grass cutting season.

Why not come to us too ?

PROVEN WORKMANSHIP COMPETITIVE PRICING AND WE DON'T MAKE YOU WAIT! COLLECTION AND DELIVERY BY ARRANGEMENT.

Also specialists in welding of aluminium, stainless steel, magnesium and cast iron components.

Telephone **01206 2309 64**; 88 Hungerdown Lane, Lawford

P.J. SAMPSON BUILDERS

COMPLETE BUILDING SERVICE

30 Years' Experience

**Brick work Specialist
Painting & Decorating
Plastering and Carpentry
Plumbing & Electrics
Roofing**

All Property Maintenance

Tel: 01206 230619

66 Tile Barn Lane Lawford

Manningtree Body Repair Centre

**Riverside Avenue West
Lawford
Manningtree
Essex
CO11 1UN**

Tel / Fax: (01206) 393 191

All Vehicle Body Repairs & Refinishing work undertaken including:

- Insurance Work, MOT welding, Panel Beating and Spraying
- Assistance given to "Non-Fault" Third Party Insured
- Collections and Delivery

Yoga-Nut with Katie Courts

Highly-qualified yoga teacher & nutritionist at **Stratford-St-Mary's Parish Rooms.**

NEW CLASS! Thursday evenings PiYo. Cardio class based on yoga and Pilates moves.

Monday evenings: **Hatha** and **Flow yoga.**

Use yoga &/or nutrition to heal long-term injuries, lose weight, & find energy!

For more information and bookings email: ktcourts@gmail.com;

Tel: **01206 323757**; or visit www.yoga-nut.co.uk





DEDHAM OSTEOPATHY

Dedicated to getting you better

Luke Jackman Bsc Hons Ost
Registered Osteopath

Tel: 01206 322836/07974 144593
www.dedhamosteopathy.co.uk

Osteopathy and Western Medical Acupuncture clinic ideally located in the heart of the Dedham countryside, providing treatment for you and your family.

- Back pain and sciatica
- Neck and shoulder Pain
- Pain & Stiffness from Arthritis
- All joint, muscle/ligament strains
- Tennis/ Golfers Elbow
- Trapped nerves
- Tendonitis
- One hour initial appointment
- On-site free parking
- Open weekdays, evenings and weekends



Helen Sims
FLOWERS

**BEAUTIFUL FLOWERS
FOR ALL OCCASIONS**

T: 07899 061840

E: helensimsflowers@btinternet.com
www.helensimsflowers.co.uk



HILL FARM
LANDSCAPES

A family business with a personal and professional landscaping and fencing service for both domestic and commercial properties.

Mark Baines, The Granary, Brightlingsea
Road, Thorrington, CO7 8JJ
T: 01206 303608 M: 07966 468045
E: mark@hillfarmlandscapes.com
W: www.hillfarmlandscapes.com

Birketts



UK regional private
client firm of the year

Our highly skilled team offers advice in:

- Wills and Estate Planning
- Lasting Powers of Attorney and Court of Protection Applications
- Probate and Administration of Estates

For further details, please contact Bob Steward
01473 406205 | bob-steward@birketts.co.uk

Clear Legal Advice
Cambridge Chelmsford Ipswich Norwich

www.birketts.co.uk/privateclient

PENROSE & PARTNERS VETERINARY SURGEONS

ALL CONSULTATIONS BY APPOINTMENT
COMPREHENSIVE SERVICE INCLUDING 24HRS EMERGENCY

PEELER'S END
UPPER STREET
STRATFORD ST MARY CO7 6LW
TEL: (01206) 323 414

70 BRINKLEY LANE
HIGHWOODS
COLCHESTER CO4 9XE
TEL: (01206) 842 608

Essex & suffolk PEST SOLUTIONS



Your local pest control experts
for home & business

- Free advice, fast response
- Highly accredited (NPTA)
- Fully qualified & insured
- Discreet & confidential

Tel: 01473 328092 (Holbrook)
Email: info@eandspestsolutions.co.uk



PATTERN PERFECT Ltd

Painting, Decorating & Maintenance

www.patternperfect.co.uk

* Interior and exterior projects * Local discounts

01206 396386 / 07876030073

patternperfect@hotmail.com



City &
Guilds
Qualified

Countryside Tree and Garden Services

A local family run team of qualified, reliable tree and hedge experts.
We offer tree surgery, hedge maintenance and stump grinding. Please call for
a FREE no obligation quote.

01206 322935 / 07825 069048

www.countrysidetreeandgardenservices.co.uk

City &
Guilds
NPTC
Qualified



Dedham Vale Homecare Ltd
'Care with Integrity'

Dedham Vale Homecare is a local business caring for local people.

Our aim is to provide a flexible service to meet your identified personal needs with dignity and privacy.

Contact us today to discuss your personal requirements.

TAILORED CARE

RESPITE CARE

COMPANIONSHIP

CARER RELIEF

MEAL PREPARATION

SHOPPING & VISITS

www.dvhc.co.uk - info@dvhc.co.uk - 01206 323761

Leisure Hire



Marquee and Equipment Hire

- Marquees erected on most surfaces •
- Awnings • Walkways •
- Extensions to Buildings • Linings •
- Lighting • Furniture •
- Flooring & Staging • Heating •

Summer or Winter
 Weddings Anniversaries Corporate

Brochure upon request

(01206) 242 196

leisurehire@gmail.com

Celebration Bouquets
 Regular Fresh Flower Service
 House & Venue Dressing
 Weddings, Corporate Displays,
 Sympathy Tributes & More..

INTERIOR
floral
 DESIGN

Bloom House, The Heath, Dedham
 01206 322630 • 07917 767251
interiorfloraldesign.co.uk



1 Threadneedle (Main) Street
Dedham, Colchester CO7 6HH
Tel: 01206 322674 • Mob: 07732 039726

Email: nicola.pedicare@gmail.com
 Web: www.pedicarefootclinic.co.uk

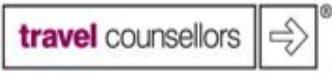
Dedicated to the care of your feet

Nigel Bruce

Industrial & Domestic
ELECTRICIAN

'The Swift', Upper Street,
 Stratford St Mary,
 Colchester CO7 6JW

Tel: (01206) 322 751



With us...it's personal

Travel, tailor made for you, with care

01206 809220

sarah.yandell@travelcounsellors.com
www.travelcounsellors.co.uk/sarah.yandell

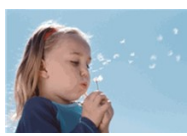


Quality pre-school experience for children aged 2 to 5 years

In the grounds of
Stratford St. Mary Primary School

All staff fully qualified

Tel: 01206 322 466
www.abcpreschoolstratford.com



Registered Charity No. 1036850

S. J. Smith PLUMBING AND HEATING ENGINEERS

**From an extra radiator
To a full heating system**



- * Boiler changes
- * Bathroom suites
- * *Aqualisa, New Team* & other showers
- * Electric showers
- * All heating and plumbing repairs

FREE ESTIMATES
CORGI REGISTERED

22 Bullock Wood Close
Colchester

COLCHESTER 843 493

For the professional decorating finish.....
contact MDS Painting and Decorating Services.
Established over 20 years.

For all your decorating requirements.

- Interior / Exterior Painting, Wallpapering, hanging Soft Furnishings and Accessories.
- Free Quotation
- References available
- Many repeat clients



01206 621805 or 07583 024776
www.masterdecoratingservices.co.uk

Richardson
.....&.....
Rothwell



184271

Plumbing and Heating Limited
Unit 1, Manningtree Road, Dedham

Make us your first call for plumbing & heating requirements.

We are your reliable local plumbers. We undertake all plumbing works from heating systems and bathroom suites to solar heating, air source & ground source heat pumps.

We offer a free quotation service so please call us to find out more details.

Tel: 01206 323732 Fax: 01206 323735 email: steve@richardsonandrothwell.co.uk



THE FOOT CLINIC @ DEDHAM

Accredited and HCPC Registered Podiatrists

We also provide a nail cutting service with our Podiatry Assistant every 3rd Wednesday (subject to assessment) for a reduced fee of £15.00



The Society of
Chiropractors and
Podiatrists

Dedham Doctors Surgery,
Roman Place, Manningtree
Road, Dedham CO7 6DU

Weds 2pm - 5.30pm

01206 854300

www.colchesterfootclinic.co.uk

Victoria Baker PILATES

Personally designed courses to improve posture, joint alignment, movement and strength
group and individual sessions in a private, comfortable studio

Unit 18
Dedham Vale Business Centre
Manningtree Road
Dedham CO7 6BL



Tel: (01206) 322244
Mobile: 07887 987280
victoria@victoriabakerpilates.com
www.victoriabakerpilates.com

Sparlings

Solicitors ... we care

An efficient
personal service
on your doorstep



Home visits
available on
request

13 High Street, Manningtree Contact: Susan Morsley

Tel: 01206 392201

email: enquiries@sparlings.co.uk

www.sparlings.co.uk

Also at Colchester & Frinton-on-sea

Lexcel
Practice Management Standard
Law Society Accredited



INVESTOR IN PEOPLE

I.C.P. PLUMBING & CENTRAL HEATING LTD.

Installation, breakdown, service, maintenance

Natural Gas, Oil & LPG specialists

GAS SAFE REGISTERED



Contact Ian Phillips on:

07885 228 646 (mobile)

BOILER SERVICE or BREAKDOWN 07885 228 646

*Our boiler specialist provides a breakdown and maintenance service
for Gas, LPG, & Oil boilers*

L.A. HYMAS

Furniture Sales, Restorations & Soft Furnishings

SERVICES

Antique & Modern furniture restoration
pathetically-restored furniture:

Specialists in traditional upholstery -

not staples or foam, only hair where appropriate

French Polishing

Cabinet making

Carving

Rushing, Gilding

Any conservation of furniture or related items

Curtain making / alterations / loose covers

SALES

Highest-quality, sym-

Chesterfield sofas

Armchairs

Mirrors

Tables

Chests of drawers

Sets and single chairs

Furniture sold on commission (free estimates)

Large range of fabrics & trimmings



67 High Street, Hadleigh, IP7 5DY Tel / Fax: 01473 829 337

Please mention **Dedham Parish Magazine** when you contact any of these Advertisers

R



Cakes by *Abi*

www.abisartonicakes.webs.com

*Creative bespoke cakes
which taste as stunning as they look.*

*Formerly a Pastry Chef at Claridge's specialising in
stylish cakes and patisserie for all occasions. Based in Dedham.*

Mobile: 07870217003 Email: abisarton@gmail.com



fiducia

wealth management & wealth preservation

Award winning, independent, fee-based financial planners and investment managers. Our client relationships are discreet and highly confidential. To meet with John Millican, Sarah Travers or Gordon Kearney contact us at:

Fiducia Wealth Management Limited

Dedham Hall Business Centre, Brook Street, Dedham CO7 6AD

T: 01206 321045 E: email@fiduciawealth.co.uk W: www.fiduciawealth.co.uk

Authorised and regulated by the Financial Conduct Authority

THE
Munnings
ART MUSEUM

Castle Hill, Dedham, Essex

01206 322127

www.munningsmuseum.org.uk

In 2017 the museum reveals another side to one of Britain's finest equestrian painters with the launch of a new exhibition: ***Munnings and the River***

Open 1st April to 29th October, Wednesday to Sunday and BH Mondays, 2-5pm
Garden Café open from 10am

FREE ENTRY FOR DEDHAM RESIDENTS on Sat 22nd and Sun 23rd April 2017

Details of events and workshops can be found on our website.